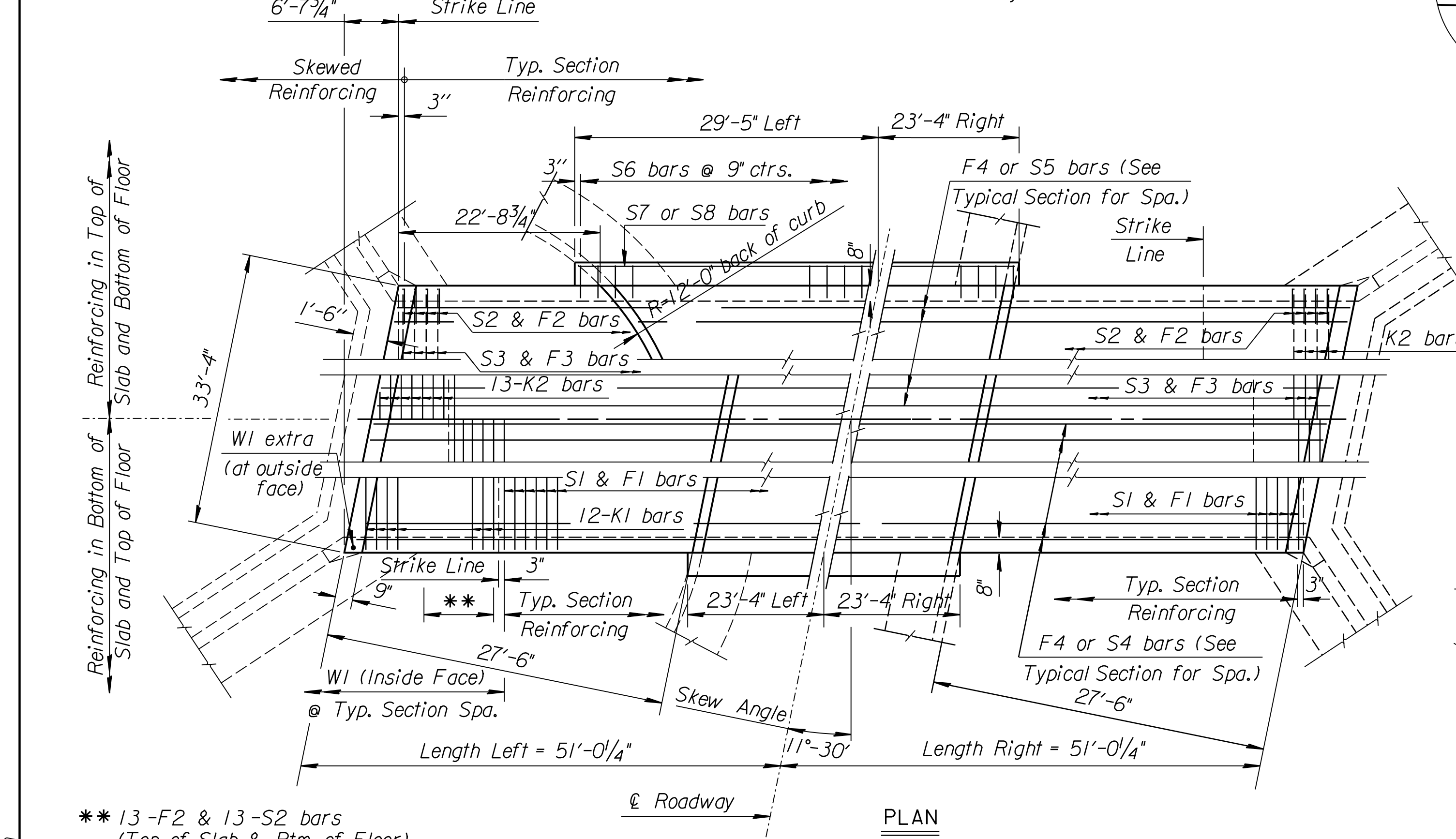
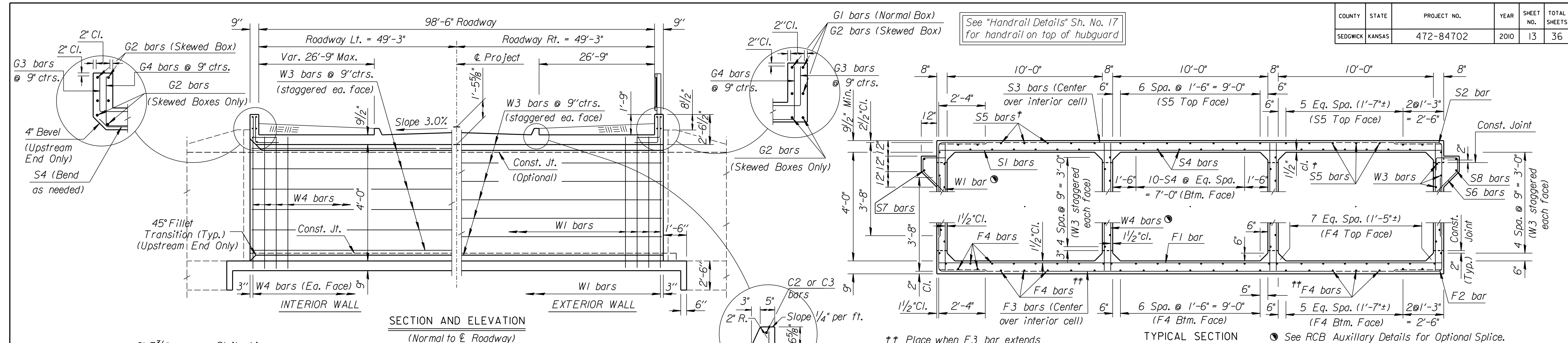


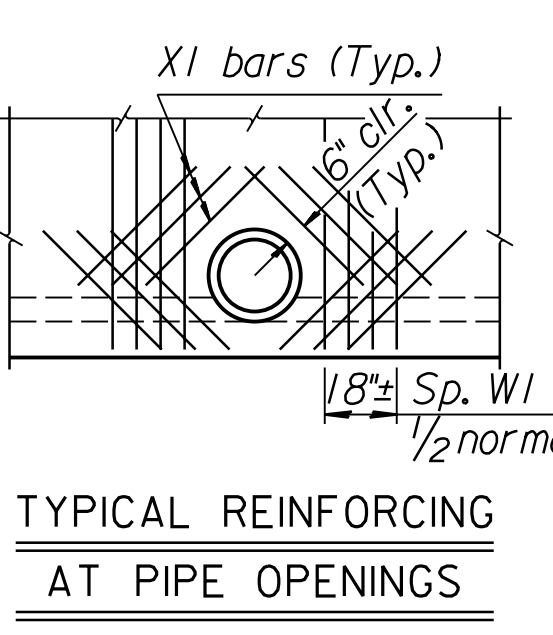
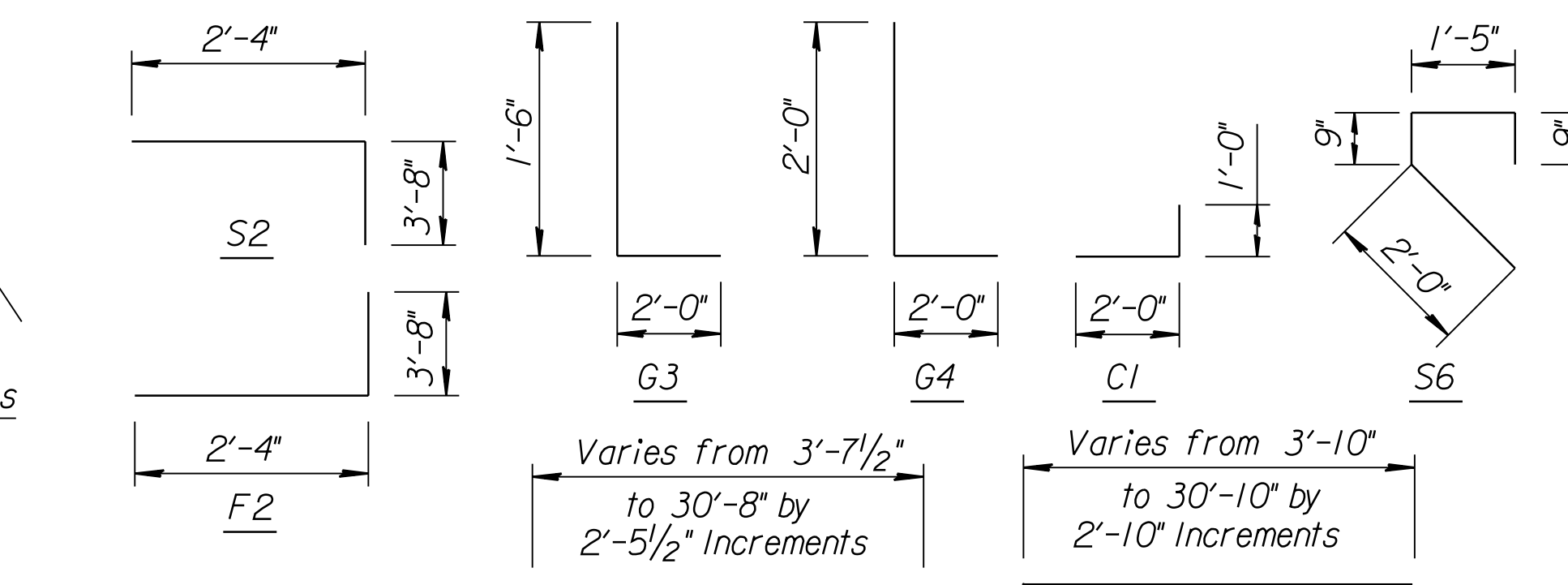
VERSION: 5.1.0 COMPILED: 02/09/99

CO.	CHECK	DATE
PROJ.	DESIGN	DATE
DESIGN	DATE	DATE
QUANTITIES	DATE	DATE
TRACING	DATE	DATE
RETRACTED	DATE	DATE

Drawn By: \$\$\$USERNAME\$\$\$  
 DGN File: \$\$\$DGNFILE\$\$\$  
 Plotted: \$\$\$SYTIME\$\$\$  
 View: \$\$\$VIEW\$\$\$



\*\* 13-F2 & 13-S2 bars (Top of Slab & Btm. of Floor)



See Sh. No. 12 for Locations and Elevations

Place when F3 bar extends to exterior walls.  
 Place when S3 bar extends to exterior walls.

See RCB Auxiliary Details for Optional Splice.

**GENERAL NOTES**

**LOADING:** HS20-44 AASHTO Specifications, 1983 Edition.  
**UNIT STRESSES:** Class AAA Concrete;  $f'c = 4,000$  p.s.i.  
 Reinforcing Steel;  $f_y = 60,000$  p.s.i.  
**FILL HEIGHT:** Unless otherwise noted, the Design Fill Height is measured from the riding surface at the culvert and shall include the surfacing.  
**CONCRETE:** Class AAA Concrete shall be used throughout. Bevel all exposed edges with a 3/4 inch triangular moulding. Where Class AAA Concrete (AE) is specified, it shall be placed in the top slab above the Construction Joint.  
**REINFORCING:** All reinforcing shall conform to ASTM A615, Grade 60. All dimensions relative to reinforcing steel shall be to centerline of bar unless otherwise noted.  
**EXCAVATION:** Excavation for culverts less than bridge length shall not be paid for directly but shall be subsidiary to Class AAA Concrete. Excavation for RCB Bridges shall be paid for as Class III Excavation.  
**FOUNDATION STABILIZATION:** Foundation Stabilization may be required as directed by the Engineer. The depth of Foundation Stabilization shall be determined by the Engineer. Foundation Stabilization shall be paid for at the determined Unit Price set for Foundation Stabilization. See Auxiliary Details.  
**QUANTITIES:** The quantities shown in the Culvert Summary include apron and/or soil saver quantities when their construction is required by the plans. Payment for additional quantities that result from including seal course and/or floating apron, as a change in original plans, shall be made at the Unit Price bid for the various items involved.  
**STRIKE LINE:** Wingwalls and that portion of the RCB outside the Strike Line shall be constructed level. Footing for wingwalls shall be constructed with the culvert floor. See wingwall detail sheet.

SUMMARY OF QUANTITIES	
Class AAA Concrete	160.5 C.Y.
Class AAA Concrete (AE)	130.1 C.Y.
Reinforcing Steel (Gr. 60)	27,360 Lbs.
Reinforcing Steel (Epoxy Coated)	28,510 Lbs.
Bridge Handrail (Metal) (3'-6")	104.3 L.F.
Deck Drains	6 Each
Class III Excavation	158.1 C.Y.
Foundation Stabilization (Set)	1 C.Y.

CULVERT SUMMARY															
Flow Line Elev. Lt.	Flow Line Elev. Rt.	Crown Gr. Elev.	Design Fill Ht.	Skew Lt.	Left Wings	Right Wings	Scour Apron	Soil Saver	Granular Backfill	Concrete			Reinf. Steel (Gr. 60)		
										Barrel (Cu.Yds.)	Wings, Apron & S.S. (Cu.Yds.)	Total (Cu.Yds.)	Barrel (Lbs.)	Wings, Apron & S.S. (Lbs.)	Total (Lbs.)
1276.00	1276.00	1281.45	0	11.5°	FLARED	FLARED	NO	Yes	NO	264.58	25.82	290.40	54,435	1,435	55,870

Δ Epoxy Coated Bars  
 \* See Bending Diagram

BAR SCHEDULE																																									
F1			F2*			F3			F4			Δ S1			Δ S2*			Δ S3			Δ S4			Δ S5			Δ S6*			Δ S7			Δ S8								
Size	Spa.	No.	Size	Spa.	No.	Size	Spa.	No.	Size	Spa.	No.	Size	Spa.	No.	Size	Spa.	No.	Size	Spa.	No.	Size	Spa.	No.	Size	Spa.	No.	Size	Spa.	No.	Size	Spa.	No.	Size	Spa.	No.						
4	6"	191	6	5/2"	442	6	5/2"	208	4	135	34'-10"	5	6"	191	5	5/2"	442	6	5/2"	208	4	90	34'-10"	4	63	34'-10"	5	9"	133	5	2	46'-3"	5	2	52'-3"						
Δ C1*			Δ C2			Δ C3			Δ K1			Δ K2			W1			W3			W4			Δ G2			Δ G3*			Δ G4*			X1								
Size	Spa.	No.	Size	Spa.	No.	Size	Spa.	No.	Size	Spa.	No.	Size	Spa.	No.	Size	Spa.	No.	Size	Spa.	No.	Size	Spa.	No.	Size	Spa.	No.	Size	Spa.	No.	Size	Spa.	No.	Size	Spa.	No.	Size	Spa.	No.	Size	Spa.	No.
5	9"	91	5	1	34'-0"	5	1	33'-0"	5	6"	48	6	5/2"	52	4	1'-0"	206	4	60	34'-10"	5	1'-0"	408	5	1'-0"	408	7	12	33'-0"	7	9"	90	7	9"	90	5	60	3'-6"	5	60	3'-6"

NO.	DATE	REVISIONS	BY	APP'D
<b>KANSAS DEPARTMENT OF TRANSPORTATION</b> Sta. 199+90 <b>TRIPLE 10' x 4' RFB</b> (11°-30' SKEW LT.) BR Sp.3.10.04F SEDGWICK CO.				
DESIGNED	DETAIL	QUANTITIES	TRACED	KENNETH F. HURST
DESIGN CK.	DETAIL CK.	QUAN. CK.	TRACE CK.	

T:\35768\AC\ADD\SH\STRUCTURES\J\STBOX.dgn