

STATE	PROJECT NO.	YEAR	SHEET NO.	TOTAL SHEETS
KANSAS	472-84702	2010	15	36

**GENERAL NOTES**

**UNIT STRESSES:** Class AAA Concrete;  $f'c = 4,000$  p.s.i.  
Reinforcing Steel;  $f_y = 60,000$  p.s.i.

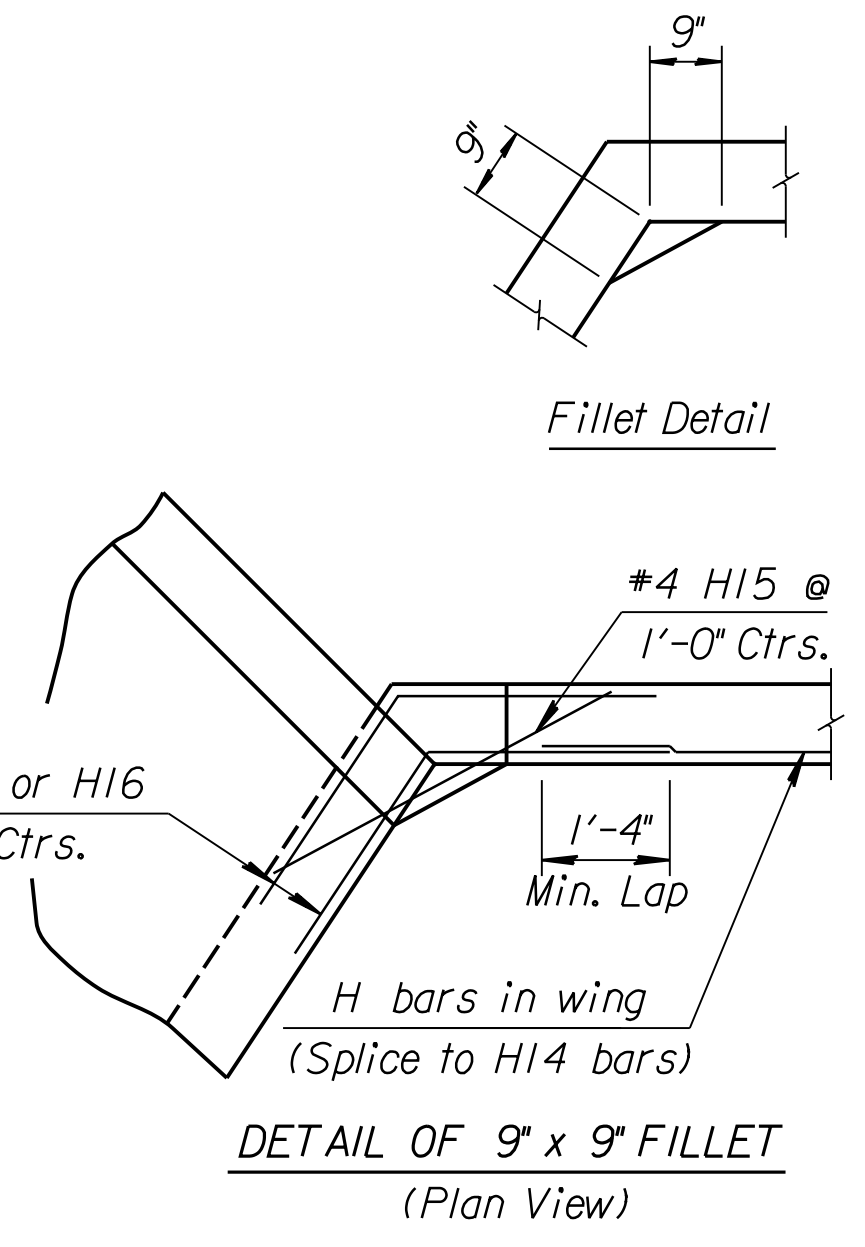
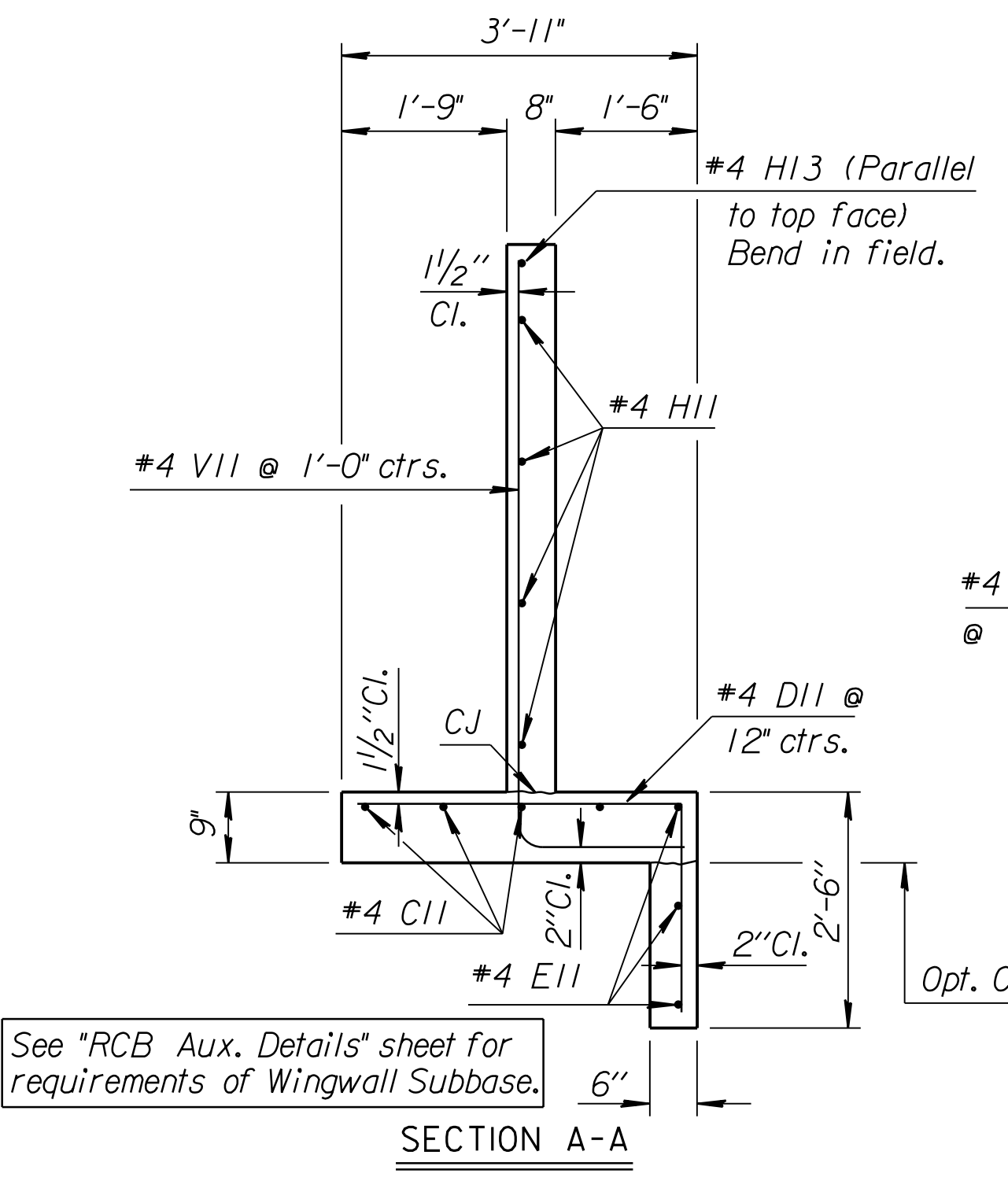
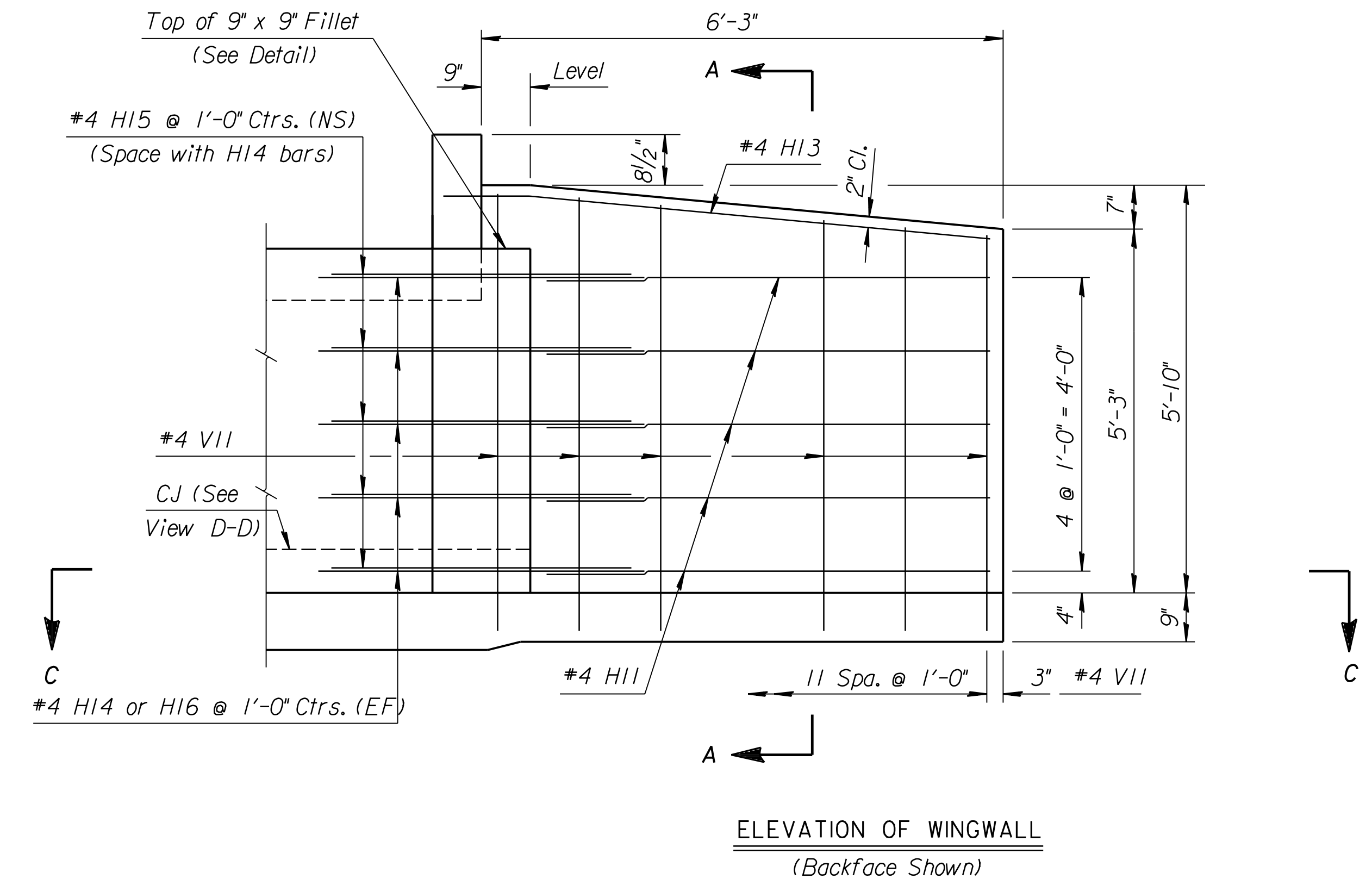
**CONCRETE:** Class AAA Concrete shall be used throughout. Bevel all exposed edges with a  $\frac{3}{4}$  inch triangular moulding.

**REINFORCING:** All reinforcing shall conform to ASTM A615, Grade 60. Welded Wire Fabric shall conform to ASTM A185. All dimensions relative to reinforcing steel shall be to center-line of bar unless otherwise noted.

**QUANTITIES:** Wingwall Quantities include all quantities outside the neat lines of the box, excluding the hubguard.

**APRON:** A 5' concrete slab shall be constructed between the downstream wings in locations subject to scour only when specified on the plans or by the Engineer. Wire Reinforcing mesh shall be electrically welded and shall be composed of 6 x 6-W1.4 x W1.4 welded wire fabric and shall be classified as pounds of reinforcing.

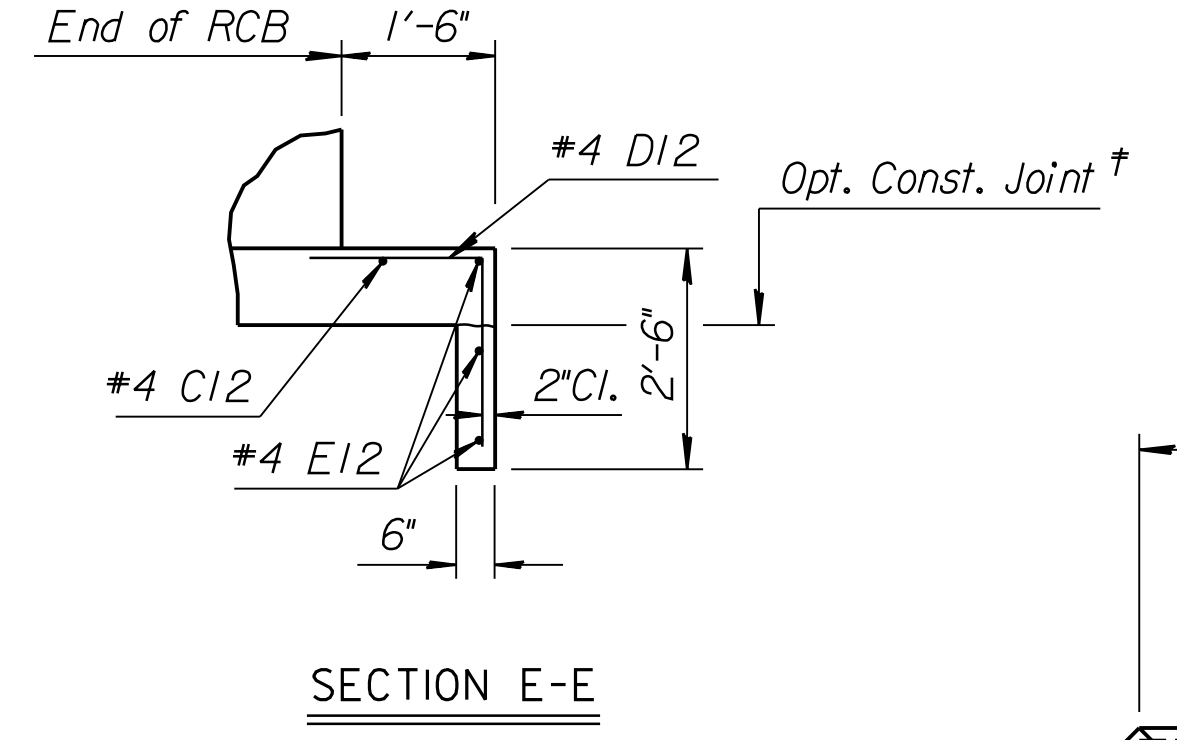
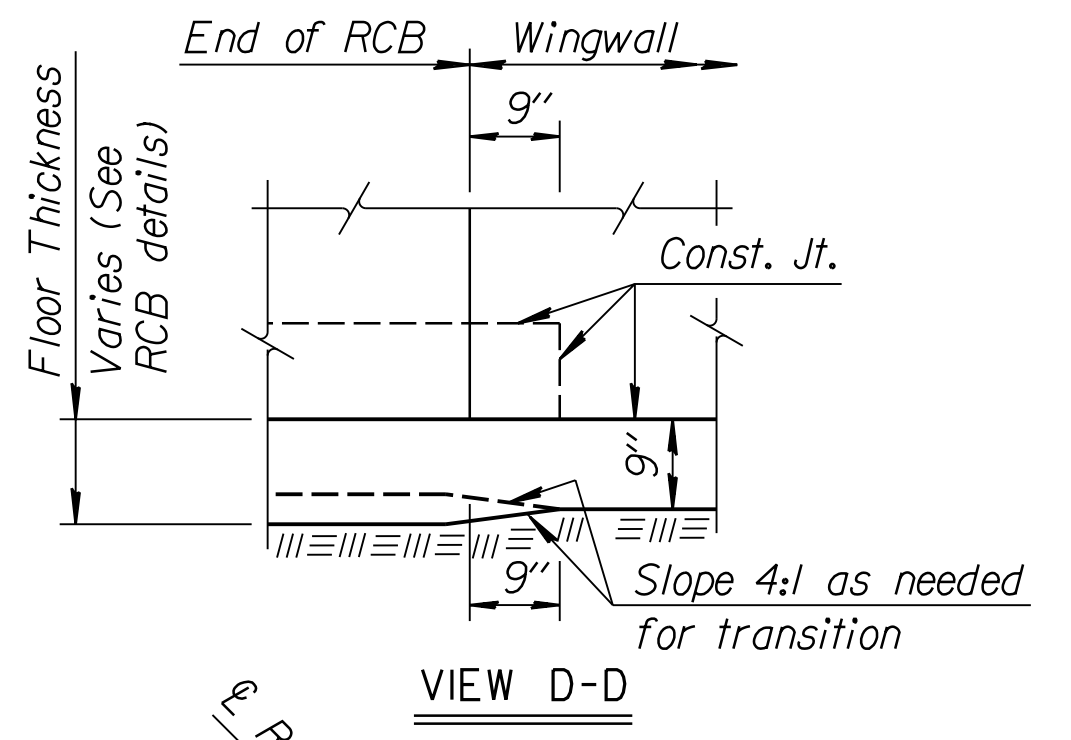
**FOUNDATION AND BACKFILL MATERIAL:** Soils judged as high plasticity clays, fat clays, expansive clays, or organic clays are unsuitable for foundation and/or backfill material for wingwalls and will not be used. Where these conditions exist, Foundation Stabilization and/or Granular Backfill (Wingwalls) shall be used as determined by the Engineer. See "RCB Auxiliary Details" sheet for additional details.



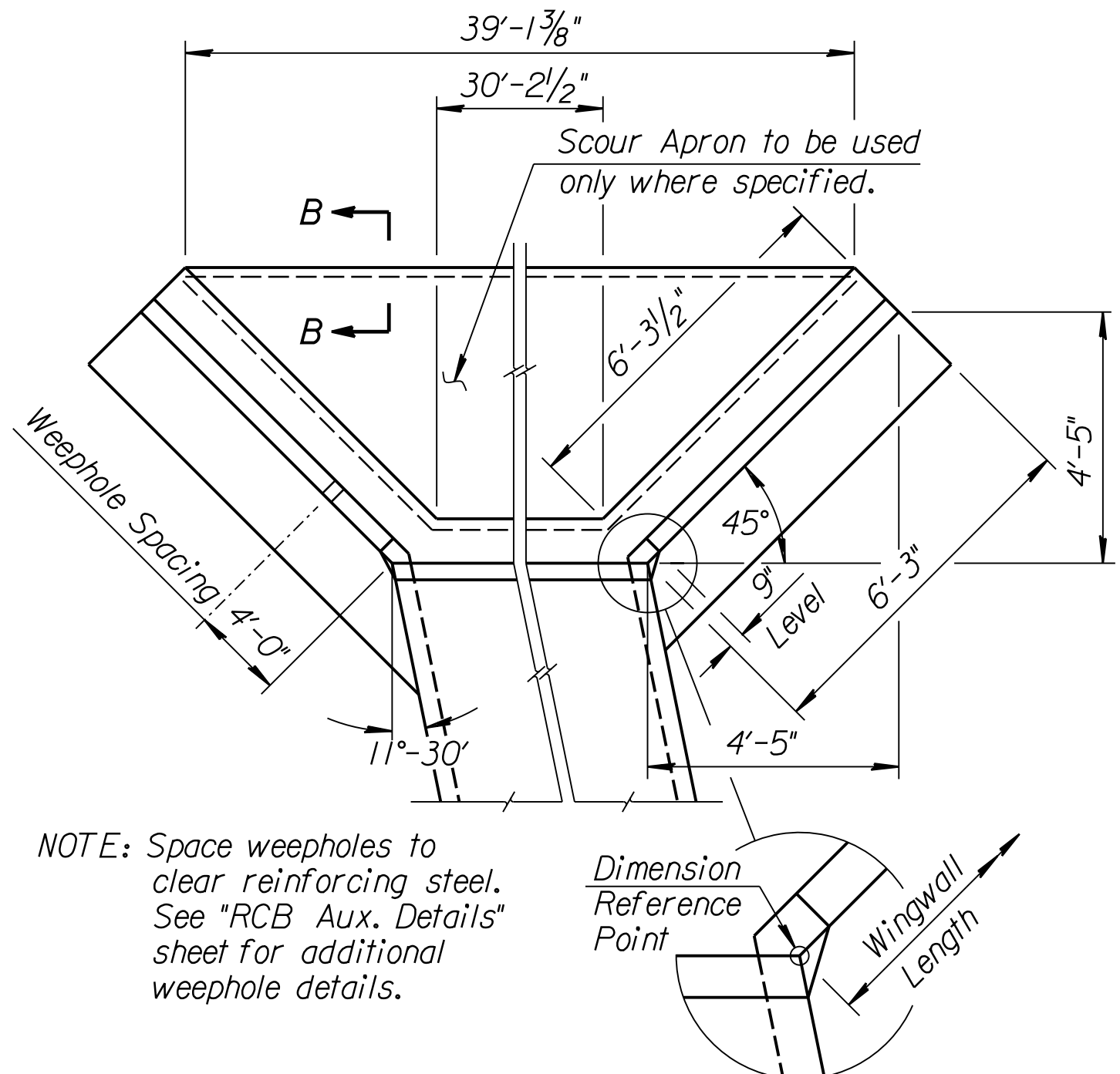
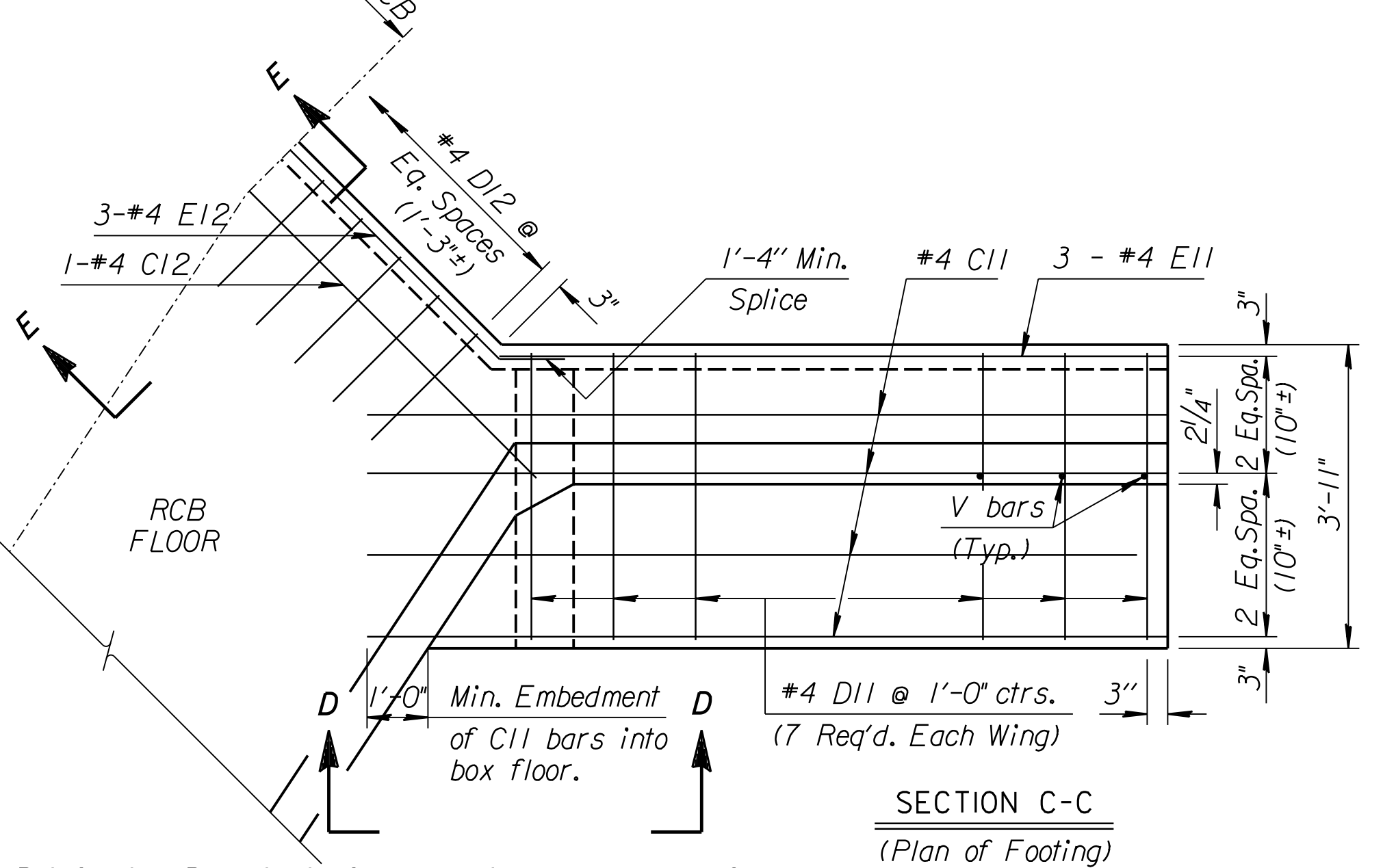
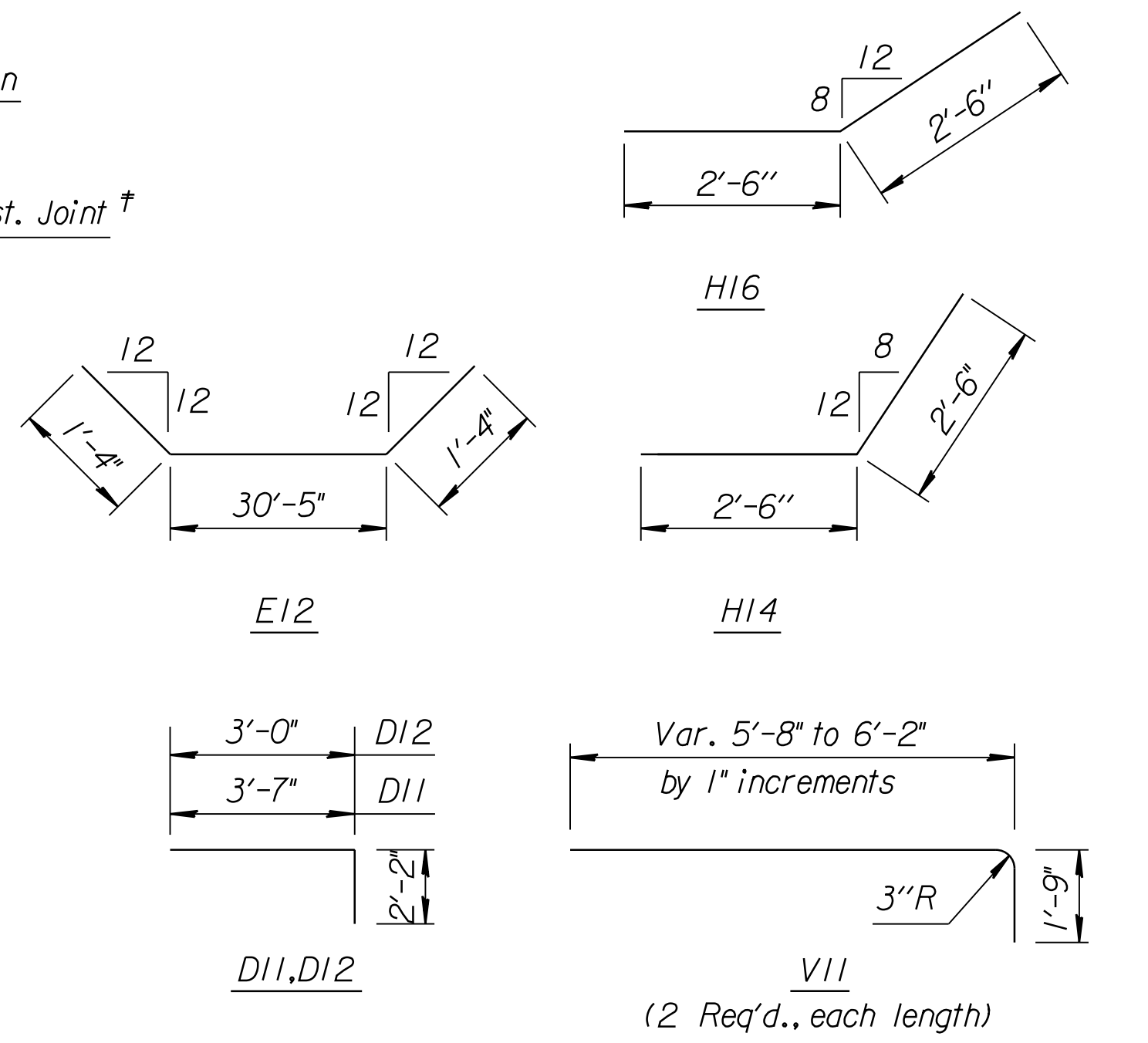
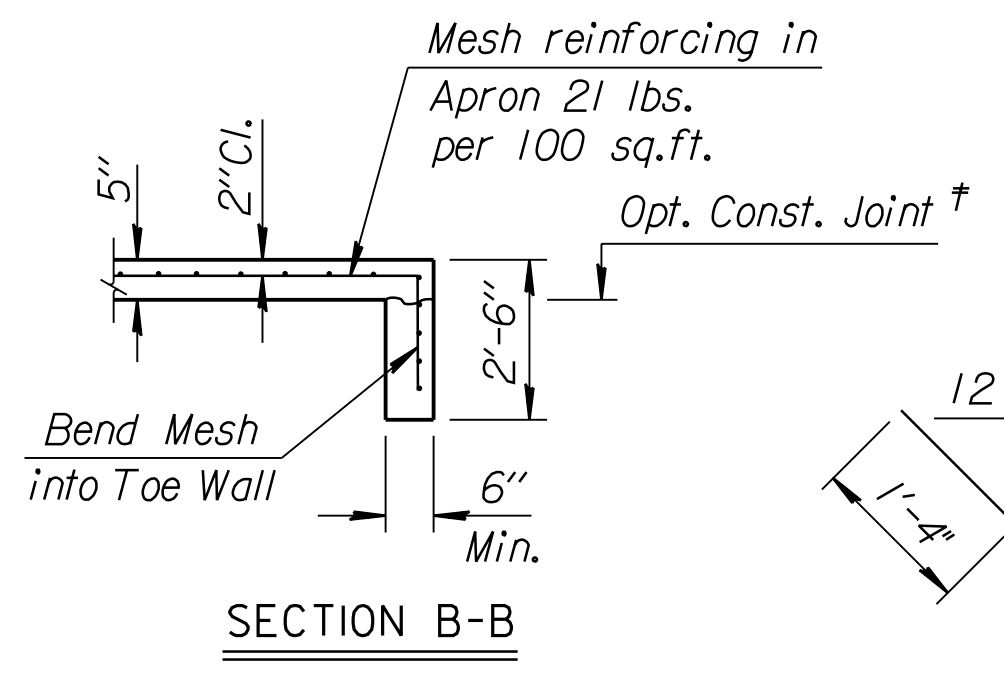
† NOTE: Const. Jt. may be used at Contractor's option when approved by the Engineer. D1 bars or mesh may be spliced thus: Minimum overlap shall be 1'-3". No increase in quantities or cost shall be allowed when Contractor elects this option.

CO. CHECK	DATE
DESIGN	DATE
DETAIL	DATE
QUANTITIES	DATE
TRACING	DATE
RETRACTED	DATE

Drawn By: \$\$\$USERNAME\$\$\$  
 DGN File: \$\$\$DGNFILE\$\$\$  
 Plotted: \$\$\$SYTIME\$\$\$  
 View: PLOT5



NOTE:  
 EF = Each Face  
 NS = Near Side  
 FS = Far Side  
 CJ = Const. Joint



NOTE: Space weepholes to clear reinforcing steel. See "RCB Aux. Details" sheet for additional weephole details.

NOTE: Reinforcing Bar List is for both wings at one end of box only.

0° Skew	#4 C11	#4 D11	#4 E11	#4 C12	#4 D12	#4 E12	#4 VII	#4 H11	#4 H13	#4 H14	#4 H15	#4 H16
No.	8	14 *	6	1	25 *	3 *	14	10	2	12 *	12	12 *
Length	9'-9"	5'-9"	6'-2"	33'-0"	5'-2"	33'-1"	*	5'-0"	6'-8"	5'-0"	3'-6"	5'-0"

WINGWALL QUANTITIES (One End Only)	
Class AAA Concrete:	
Wingwalls	5.84 CY.
Apron	0 CY.
Soil Saver	4.85 CY.
Reinforcing Steel	
	527 Lbs.
Welded Wire Fabric	
	0 Lbs.

NO.	DATE	REVISIONS	BY	APP'D
KANSAS DEPARTMENT OF TRANSPORTATION				
RFB UPSTREAM WINGWALLS				
STD. NO. 10.00.05				
DESIGNED	RAMI	DETAILED	RDR	QUANTITIES
DESIGN CK.	RRRI	DETAIL CK.	RRRI	QUAN. CK.
			APP'D	KENNETH F. HURST
			TRACED	
			TRACE CK.	