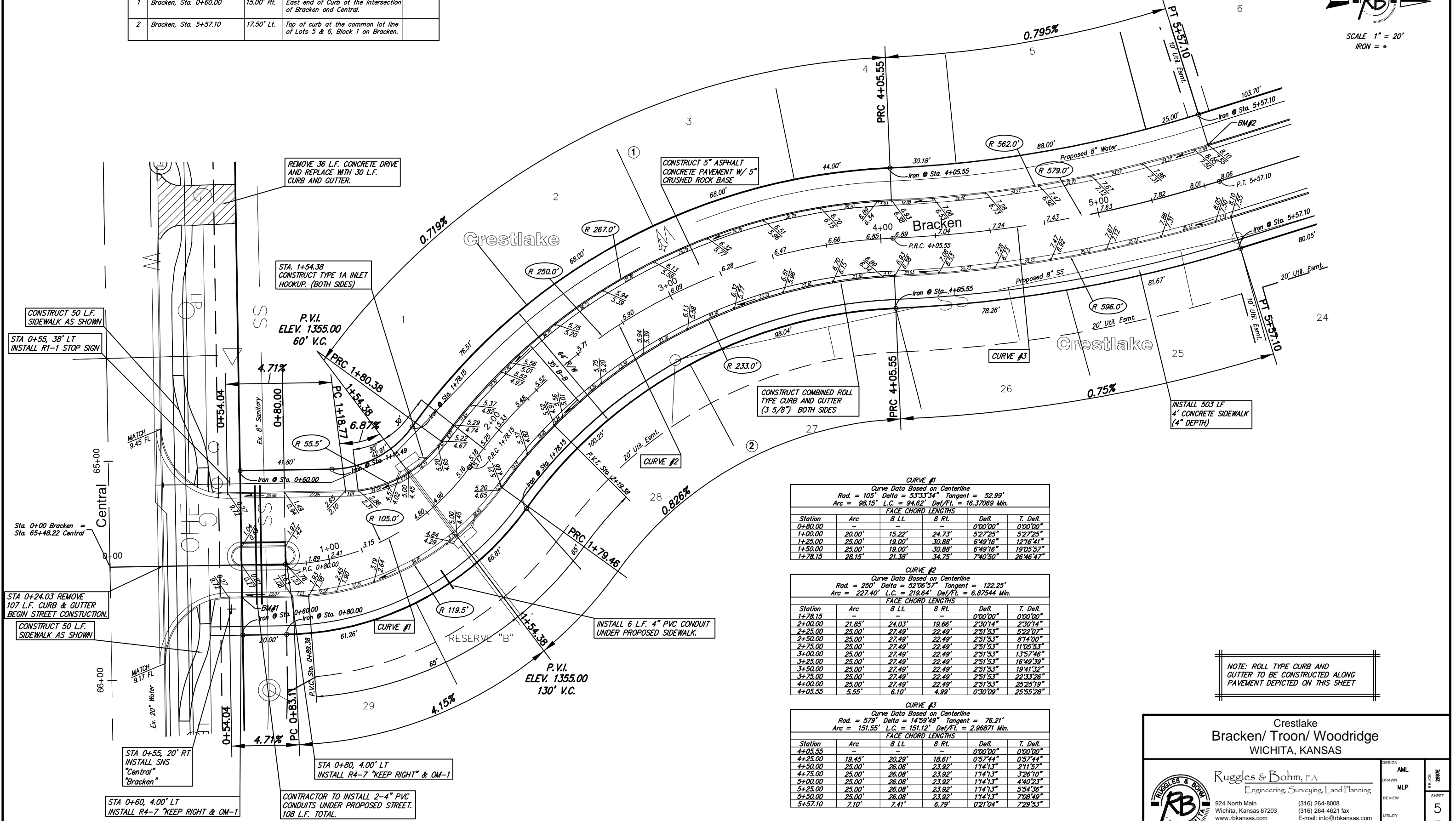
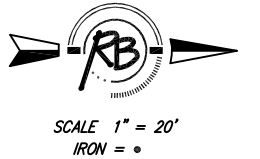


Subdivision Bench Marks

No.	Street and Station	From CL	Description	Elevation
1	Bracken, Sta. 0+60.00	15.00' Rt.	East end of Curb at the Intersection of Bracken and Central.	
2	Bracken, Sta. 5+57.10	17.50' Lt.	Top of curb at the common lot line of Lots 5 & 6, Block 1 on Bracken.	



**CURVE #1**  
Curve Data Based on Centerline  
Rad. = 105' Delta = 53°33'34" Tangent = 52.99'  
Arc = 98.15' L.C. = 94.62' Def/Ft. = 16.37069 Min.

Station	Arc	FACE CHORD LENGTHS			T. Defl.
		8 Lt.	8 Rt.	Defl.	
0+80.00	-	-	-	0'00'00"	0'00'00"
1+00.00	20.00'	15.22'	24.73'	5'27'25"	5'27'25"
1+25.00	25.00'	19.00'	30.88'	6'49'16"	12'16'41"
1+50.00	25.00'	19.00'	30.88'	6'49'16"	19'05'57"
1+78.15	28.15'	21.38'	34.75'	7'40'50"	26'46'47"

**CURVE #2**  
Curve Data Based on Centerline  
Rad. = 250' Delta = 52°06'57" Tangent = 122.25'  
Arc = 227.40' L.C. = 219.64' Def/Ft. = 6.87544 Min.

Station	Arc	FACE CHORD LENGTHS			T. Defl.
		8 Lt.	8 Rt.	Defl.	
1+78.15	-	-	-	0'00'00"	0'00'00"
2+00.00	21.85'	24.03'	19.66'	2'30'14"	2'30'14"
2+25.00	25.00'	27.49'	22.49'	2'51'53"	5'22'07"
2+50.00	25.00'	27.49'	22.49'	2'51'53"	8'14'00"
2+75.00	25.00'	27.49'	22.49'	2'51'53"	11'05'53"
3+00.00	25.00'	27.49'	22.49'	2'51'53"	13'57'46"
3+25.00	25.00'	27.49'	22.49'	2'51'53"	16'49'39"
3+50.00	25.00'	27.49'	22.49'	2'51'53"	19'41'32"
3+75.00	25.00'	27.49'	22.49'	2'51'53"	22'33'26"
4+00.00	25.00'	27.49'	22.49'	2'51'53"	25'25'19"
4+05.55	5.55'	6.10'	4.99'	0'30'09"	25'55'28"

**CURVE #3**  
Curve Data Based on Centerline  
Rad. = 579' Delta = 14°59'49" Tangent = 76.21'  
Arc = 151.55' L.C. = 151.12' Def/Ft. = 2.96871 Min.

Station	Arc	FACE CHORD LENGTHS			T. Defl.
		8 Lt.	8 Rt.	Defl.	
4+05.55	-	-	-	0'00'00"	0'00'00"
4+25.00	19.45'	20.29'	18.61'	0'57'44"	0'57'44"
4+50.00	25.00'	26.08'	23.92'	1'14'13"	2'11'52"
4+75.00	25.00'	26.08'	23.92'	1'14'13"	3'26'10"
5+00.00	25.00'	26.08'	23.92'	1'14'13"	4'40'23"
5+25.00	25.00'	26.08'	23.92'	1'14'13"	5'54'36"
5+50.00	25.00'	26.08'	23.92'	1'14'13"	7'08'49"
5+57.10	7.10'	7.41'	6.79'	0'21'04"	7'29'53"

NOTE: ROLL TYPE CURB AND GUTTER TO BE CONSTRUCTED ALONG PAVEMENT DEPICTED ON THIS SHEET

Crestlake  
Bracken/ Troon/ Woodridge  
WICHITA, KANSAS

Ruggles & Bohm, P.A.  
Engineering, Surveying, Land Planning

924 North Main (316) 264-8008  
Wichita, Kansas 67203 (316) 264-4621 fax  
www.rbkansas.com E-mail: info@rbkansas.com

DESIGN AML  
DRAWN MLP  
REVIEW  
UTILITY  
DATE May 25, 2006  
PROJECT NUMBER 472-84406  
SHEET 5 OF 40