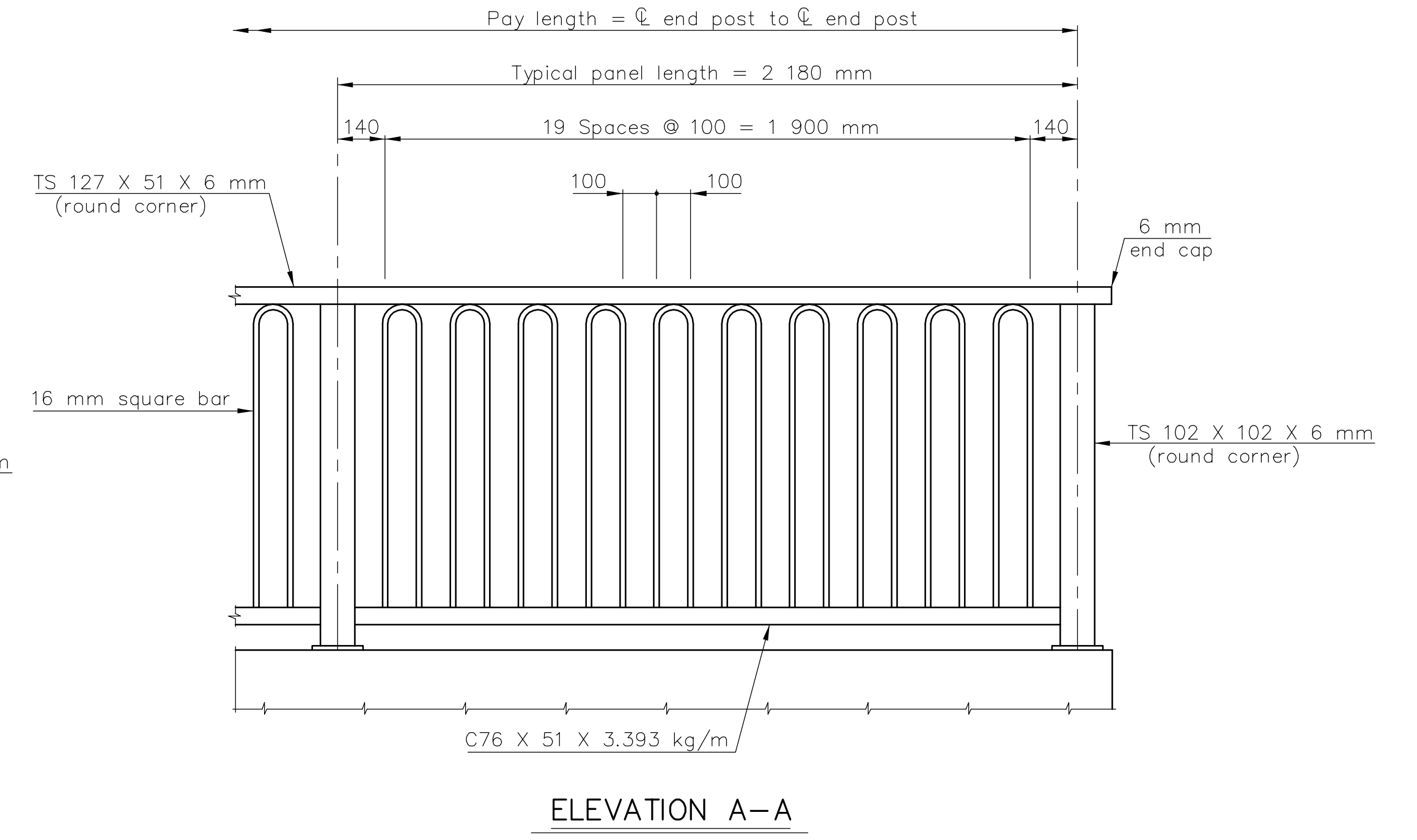
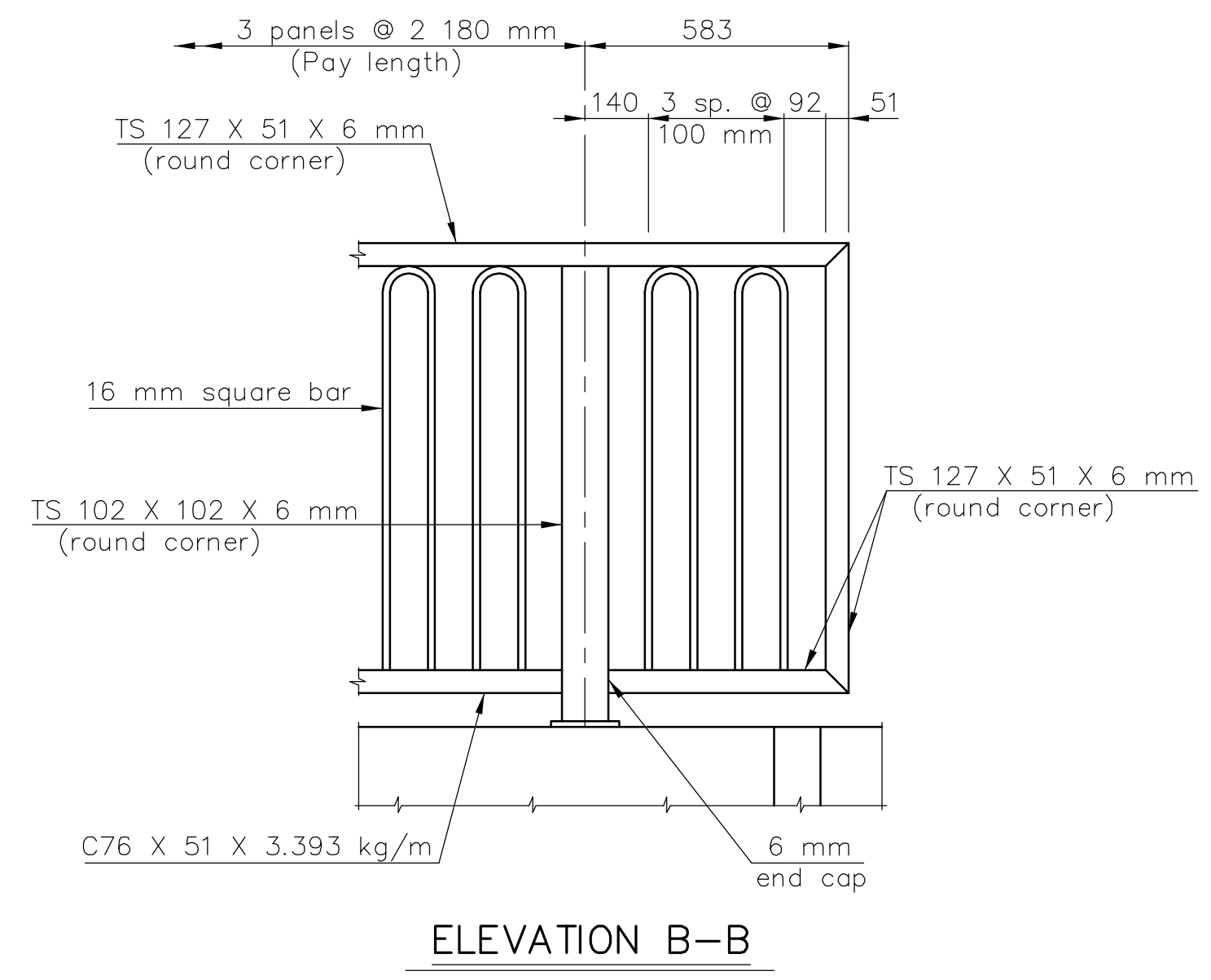
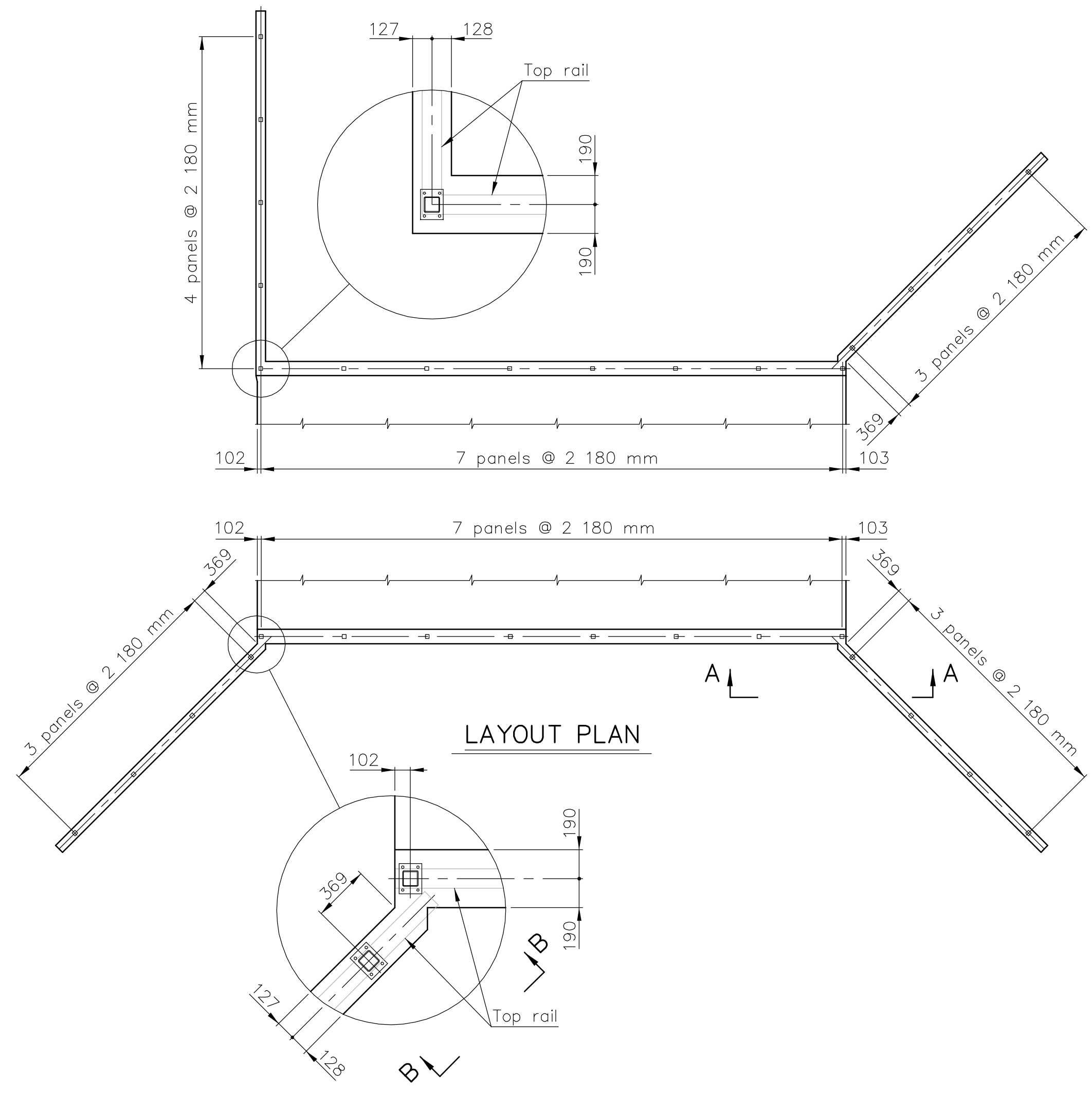
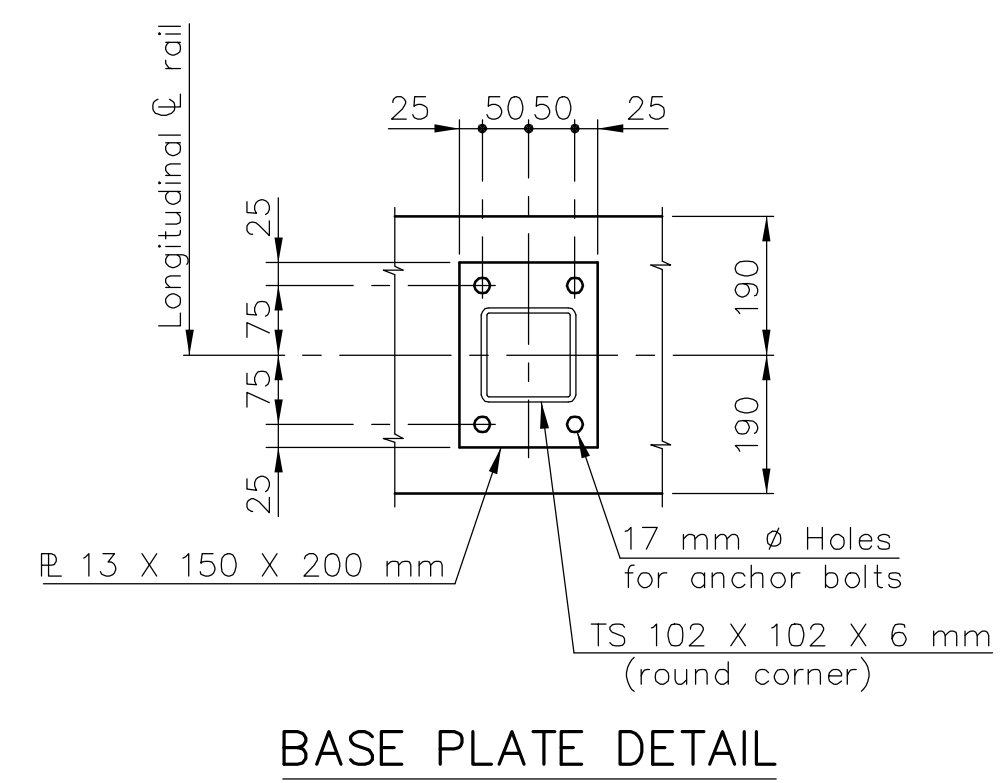


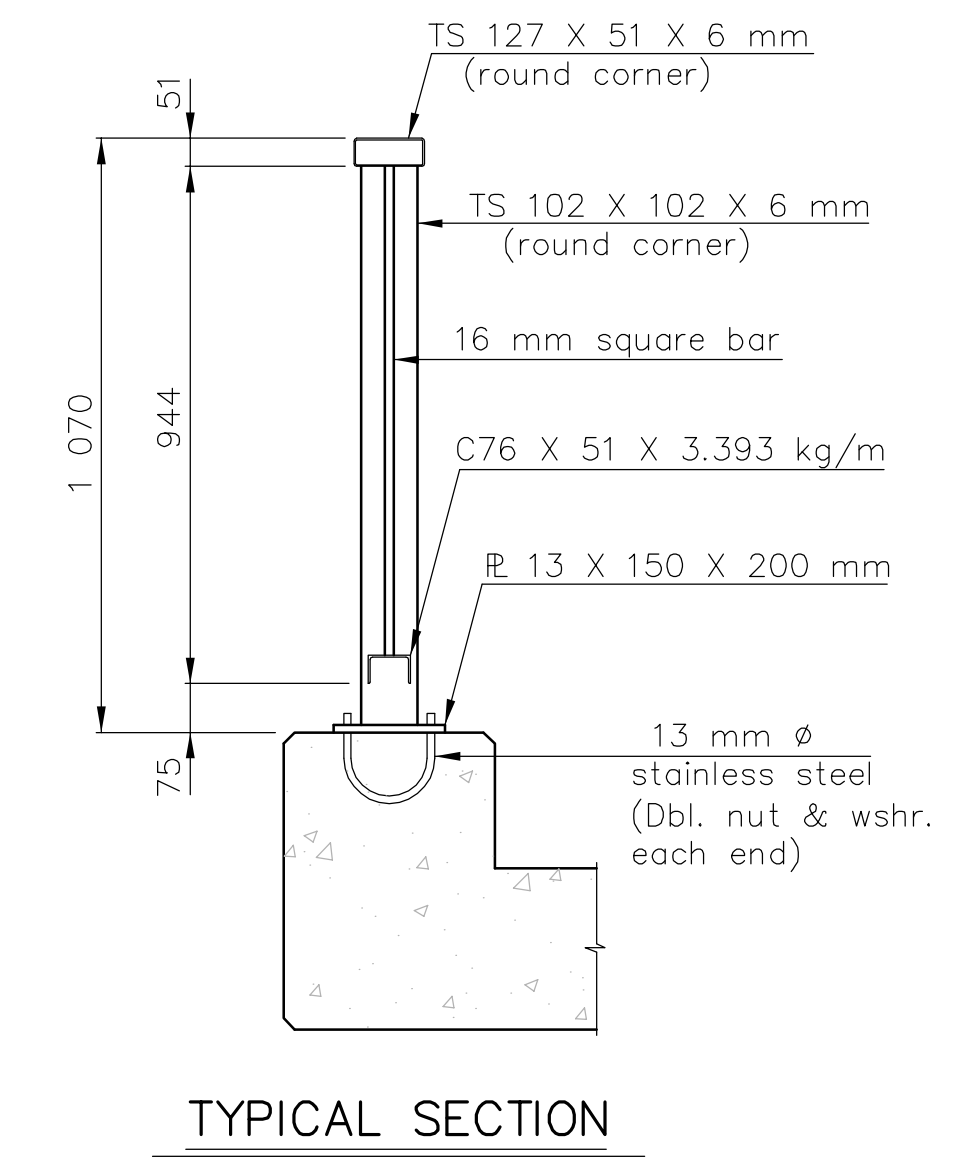
| STATE | PROJECT NO. | YEAR | SHEET NO. | TOTAL SHEETS |
|--------|--------------|------|-----------|--------------|
| KANSAS | 87 N-0240-01 | 2004 | 10 | 42 |




Note: All members of the pedestrian rail shall be bronze anodized aluminum.



Post on R.F.B. hubguard shown, posts on wings similar.



J:\02518\DWG\RCB1 1:50 (1:05)

| | | | |
|------------------------------|--|--|----------|
| PROJECT NO. 87 N-0240-01 | |  Cook, Flatt & Strobel ENGINEERS, P.A. | |
| PEDESTRIAN RAIL DETAILS | | | |
| 21ST ST. OVER CHISHOLM CREEK | | DESIGNED KMB | SCALE |
| STA. 1+978 | | DETAILED DEG | DATE |
| CITY OF WICHITA | | QUANTITIES | SHEET OF |