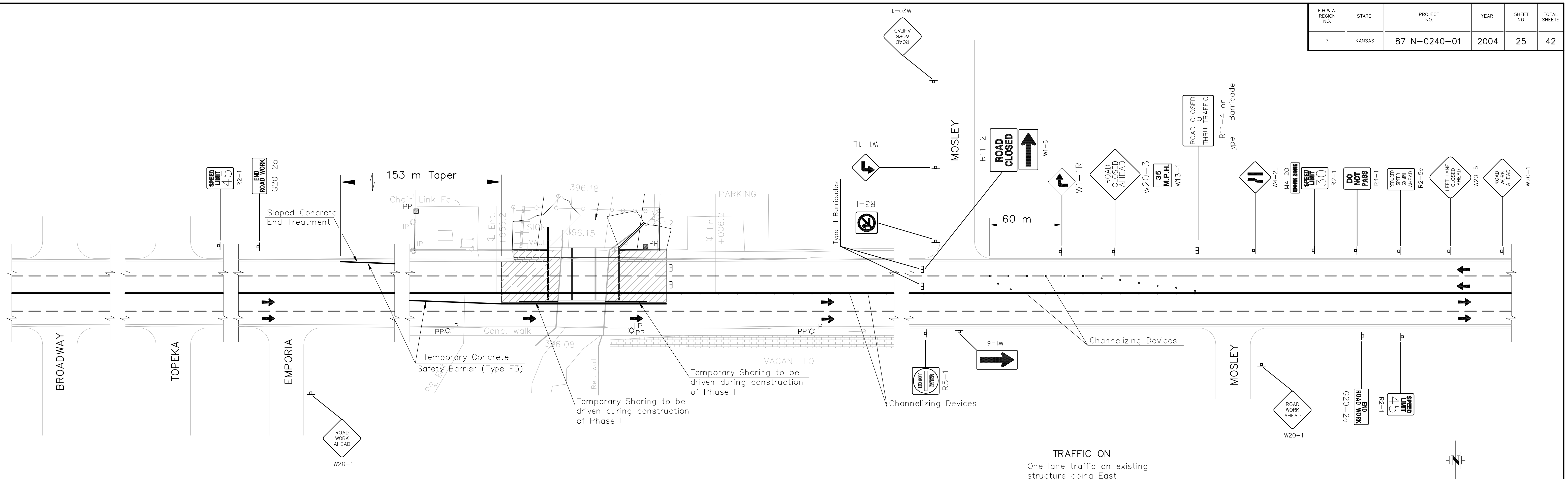


F.H.W.A. REGION NO.	STATE	PROJECT NO.	YEAR	SHEET NO.	TOTAL SHEETS
7	KANSAS	87 N-0240-01	2004	25	42



### PHASE I

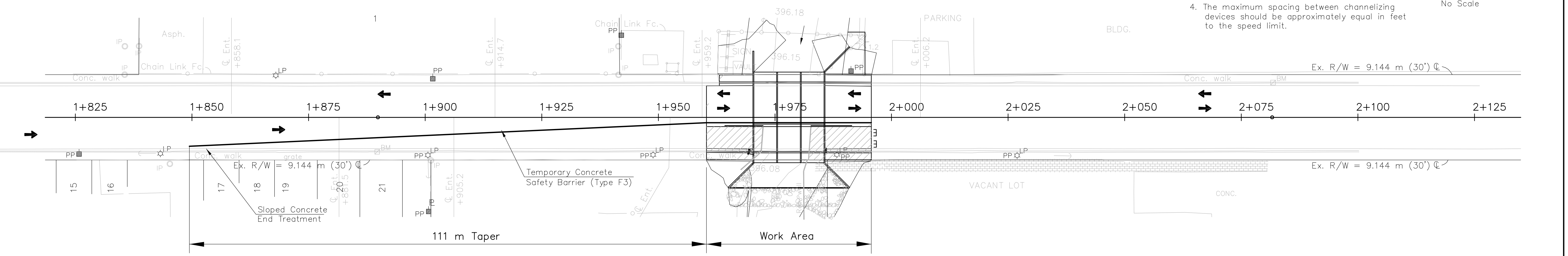
**TRAFFIC ON**  
One lane traffic on existing structure going East

**LEGEND**  
← Traffic flow arrows.

### PHASE II NOTES

1. The speed limit during construction shall be reduced to 30 mph.
2. See additional traffic control on Standards Drawings included in these plans.
3. All sign spacing and taper lengths shall conform to the latest Standards set forth in the Manual of Uniform Traffic Control Devices.
4. The maximum spacing between channelizing devices should be approximately equal in feet to the speed limit.

No Scale




### PHASE II

**TRAFFIC ON**  
Two way traffic on new structure.

### PHASE II NOTES

1. The speed limit during construction shall be reduced to 30 mph.
2. See additional traffic control on Standards Drawings included in these plans.

J:\02518\DWG\TRAFFIC 1:100 (1:0.1)

21st STREET NORTH		 <b>Cook, Flatt &amp; Strobel</b> ENGINEERS, P.A.	
PROJECT NO. 87 N-0240-01			
<b>CONSTRUCTION SEQUENCE</b>		DESIGNED KMB	SCALE
BRIDGE OVER WEST BRANCH CHISHOLM CREEK		DETAILED DEG	DATE
STA. 1+978	CITY OF WICHITA	QUANTITIES DEG	SHEET OF