

F.H.W.A. REGION NO.	STATE	PROJECT NO.	YEAR	SHEET NO.	TOTAL SHEETS
7	KANSAS	54-87 K-8258-03	2003	1	27

Proj. No. 54-87 K-8258-03

STATE OF KANSAS  
DEPARTMENT OF TRANSPORTATION



STATE HIGHWAY

CITY OF WICHITA  
SEDGWICK COUNTY  
US-54

INDEX OF SHEETS

- 1 Title Sheet
- 2 Site Plan Rock Road Pump Station
- 3 Geometrics East Kellogg
- 4 Wet Well Sections Rock Road Pump Station A1.0
- 5 Wet Well Sections Rock Road Pump Station A2.0
- 6 Wet Well Sections Rock Road Pump Station A2.1
- 7 Wet Well Sections Rock Road Pump Station A2.2
- 8-13 Rock Road Pump Station Mechanical Details
- 14-18 Rock Road Wet Well Details
- 19 Rock Road Pump Station Miscellaneous Details
- 20 Screen Wall Details Rock Road Pump Station
- 21 General Plan & Elevation 2.4 m X 2.4 m RCB Rock Road
- 22-27 Temporary Erosion And Pollution Control

Kellogg Avenue (US 54)  
Rock Road Interchange  
City of Wichita Project No.  
468-83638  
O.C.A. No. 702325

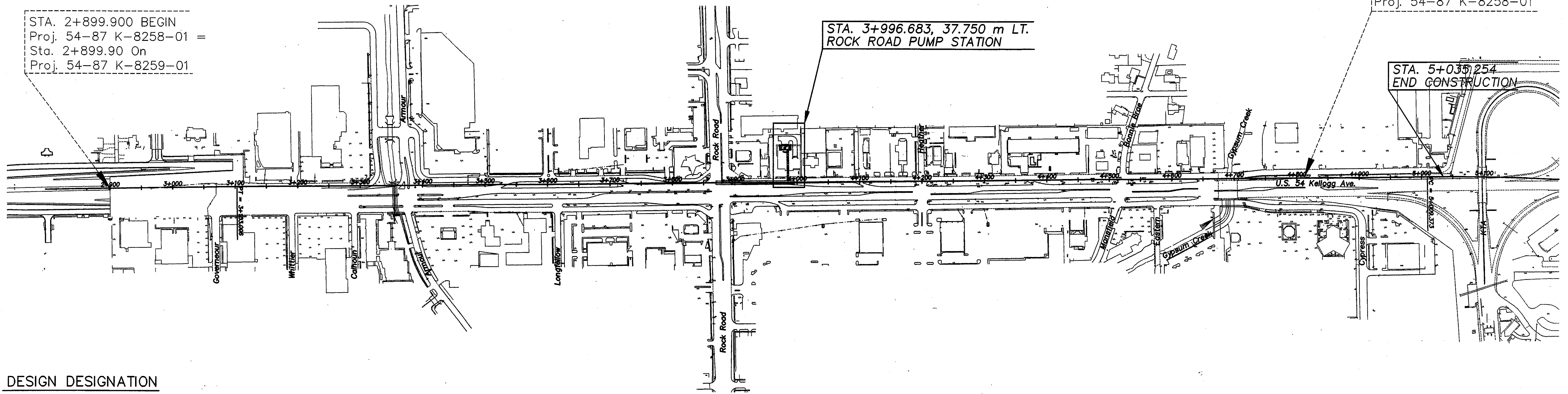
DATE	BY	REFERENCE NOTED	REFERENCE CHECKED

STA. 2+899.900 BEGIN  
Proj. 54-87 K-8258-01 =  
Sta. 2+899.90 On  
Proj. 54-87 K-8259-01

STA. 3+996.683, 37.750 m LT.  
ROCK ROAD PUMP STATION

STA. 4+806.000 END  
Proj. 54-87 K-8258-01

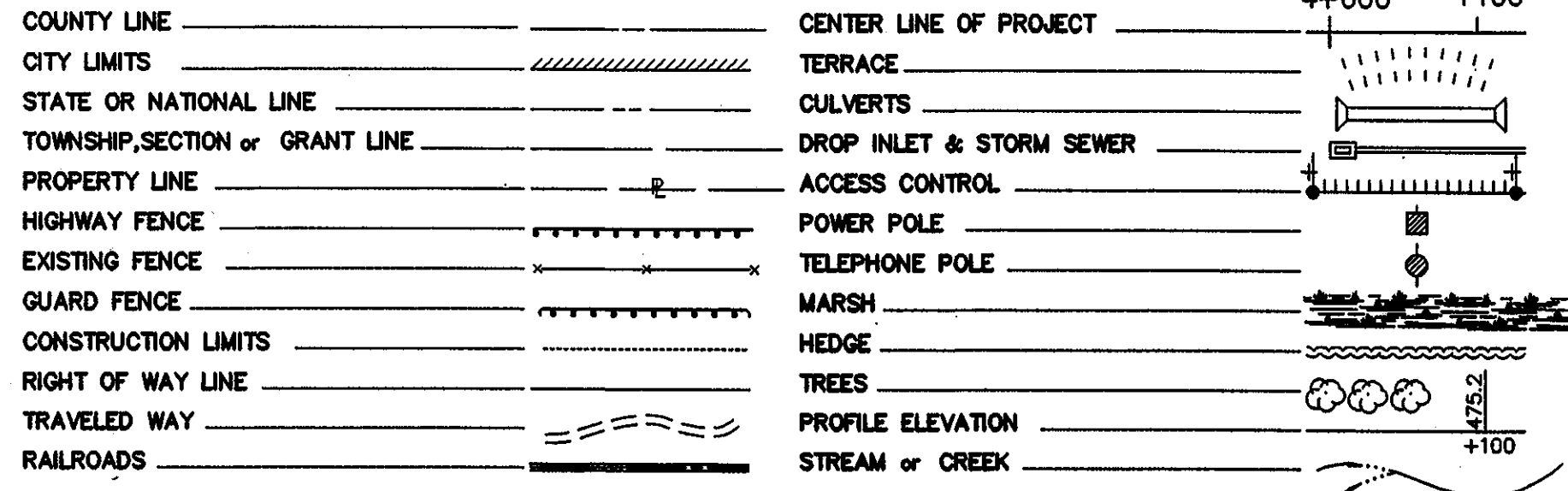
STA. 5+035.254  
END CONSTRUCTION



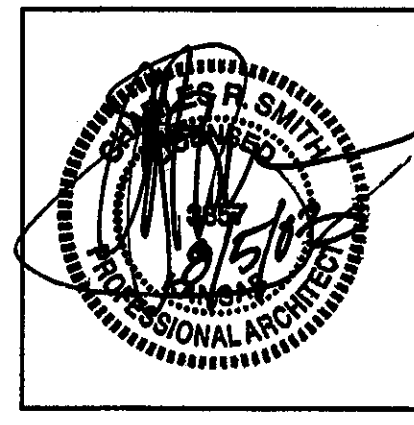
DESIGN DESIGNATION

AADT (2000)	=	45,200
AADT (2030)	=	92,000
DHV	=	10%
D	=	60%
T	=	18%
V	=	100 KPH
C of A	=	FULL
CLEAR ZONE	=	10 m

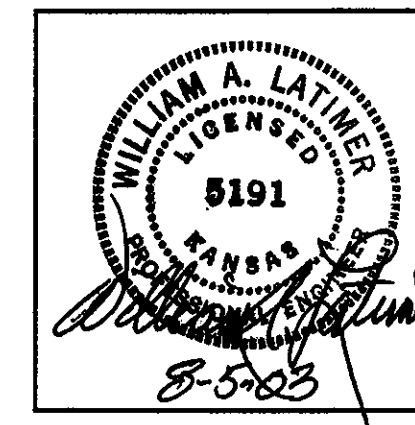
CONVENTIONAL SIGNS



All dimensions shown without a SI suffix are in millimeters. All elevations shown are in meters.



Pump Stations  
Architecture  
Horst, Terill & Karst  
Architects, P.A.



Pump Stations  
Mechanical  
Latimer, Sommers & Associates,  
P.A., Engineers

PLANS PREPARED BY:

Cook, Flatt & Strobel  
ENGINEERS, P.A.

RECOM. FOR APPROVAL-DATE

*Coil L. Rip* Aug 5<sup>th</sup> 6, 2003

NEIL CABLE, CITY ENGINEER  
CITY OF WICHITA, KANSAS

STATE	PROJECT NO.	YEAR	SHEET NO.	TOTAL SHEETS
KANSAS	54-87 K-8258-03	2003	2	27

POINT COORDINATE TABLE				
POINT	NORTH	EAST	STATION & OFFSET TO KELLOGG $\odot$	
①	513265.13693	510914.29694	3+987.443	60.120
②	513257.31736	510914.37850	3+987.443	52.300
③	513257.19163	510902.32516	3+975.389	52.300
④	513265.01121	510902.24360	3+975.389	60.120
⑤	513246.15532	510920.47325	3+993.421	41.075
⑥	513246.23250	510927.87285	4+000.821	41.075

UTILITY OWNERS

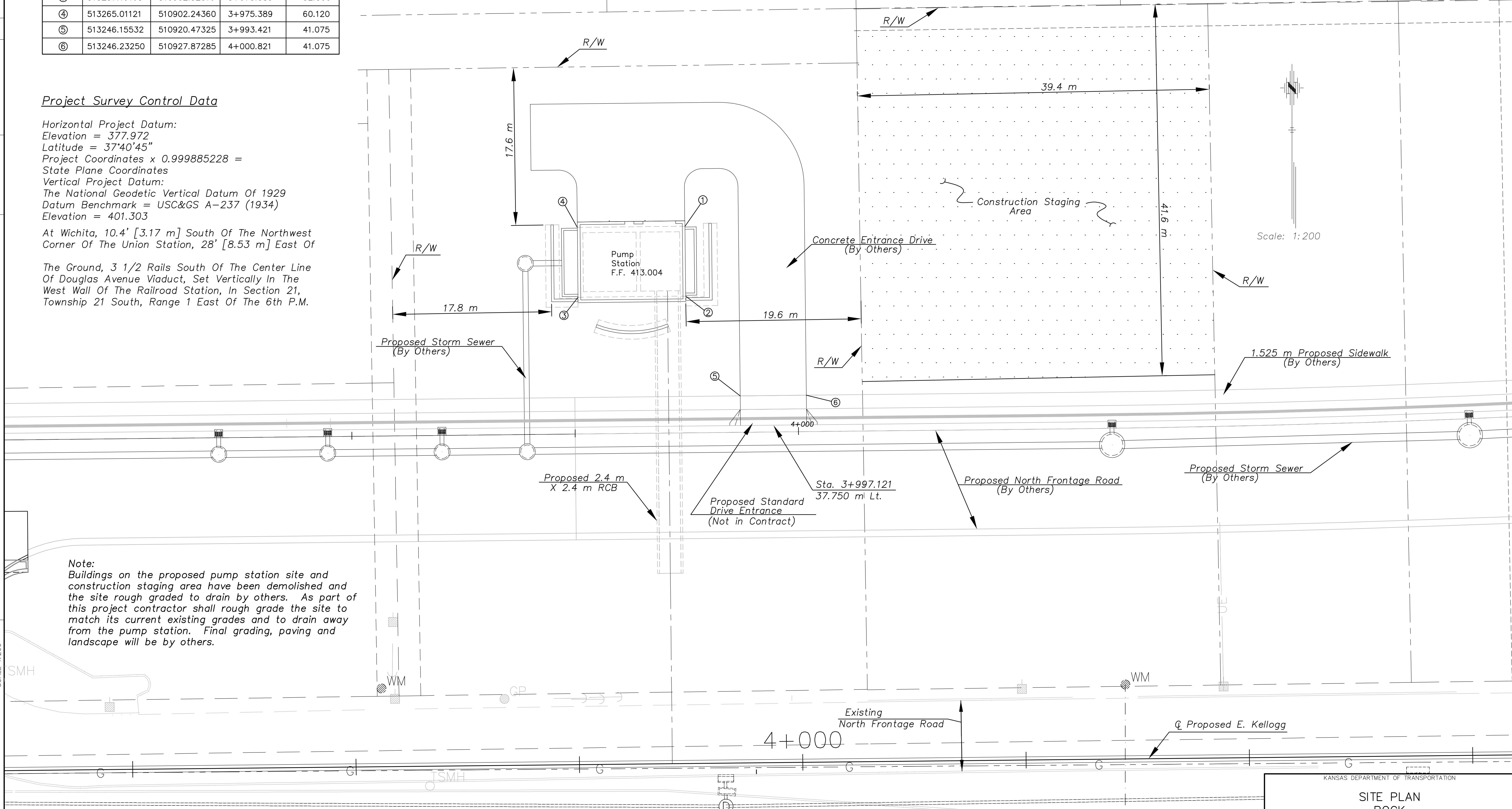
Telephone - Southwestern Bell  
 Gas - Kansas Gas Service  
 Cable TV - Cox Communication  
 Power - Westar

SW 1/4 of the SW 1/4  
 Sec. 20-27-2  
 N 510805.2890  
 E 513186.6787

DATE	
BY	
REFERENCE NOTED	
REFERENCE CHECKED	

Project Survey Control Data

Horizontal Project Datum:  
 Elevation = 377.972  
 Latitude = 37°40'45"  
 Project Coordinates x 0.999885228 =  
 State Plane Coordinates  
 Vertical Project Datum:  
 The National Geodetic Vertical Datum Of 1929  
 Datum Benchmark = USC&GS A-237 (1934)  
 Elevation = 401.303  
 At Wichita, 10.4' [3.17 m] South Of The Northwest  
 Corner Of The Union Station, 28' [8.53 m] East Of  
 The Ground, 3 1/2 Rails South Of The Center Line  
 Of Douglas Avenue Viaduct, Set Vertically In The  
 West Wall Of The Railroad Station, In Section 21,  
 Township 21 South, Range 1 East Of The 6th P.M.



Scale: 1:200

Note:  
 Buildings on the proposed pump station site and construction staging area have been demolished and the site rough graded to drain by others. As part of this project contractor shall rough grade the site to match its current existing grades and to drain away from the pump station. Final grading, paving and landscape will be by others.

Drawn by: SMH  
 Plotted: SCALE 1:200  
 File:



BM #15 "□" Cut S.W. Cor. Bridge 26.3 m W. & 12.6 m S. of  $\odot$  of Intersection Armour & Kellogg  
 27.6 m Rt. Armour  $\odot$  Sta. 49+925.087 Elev. = 409.006

BM #16 - "□" Cut Top of Curb on the E. Curb Line of the Men's Warehouse, 35.0 m N. of  $\odot$  of N. Frontage Rd.  
 42.9 m Lt  $\odot$  Sta. 3+504.4 Elev. = 410.195

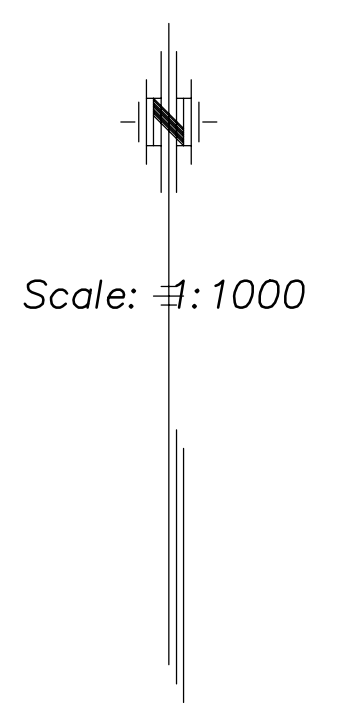
KANSAS DEPARTMENT OF TRANSPORTATION

**SITE PLAN  
 ROCK  
 PUMP STATION**

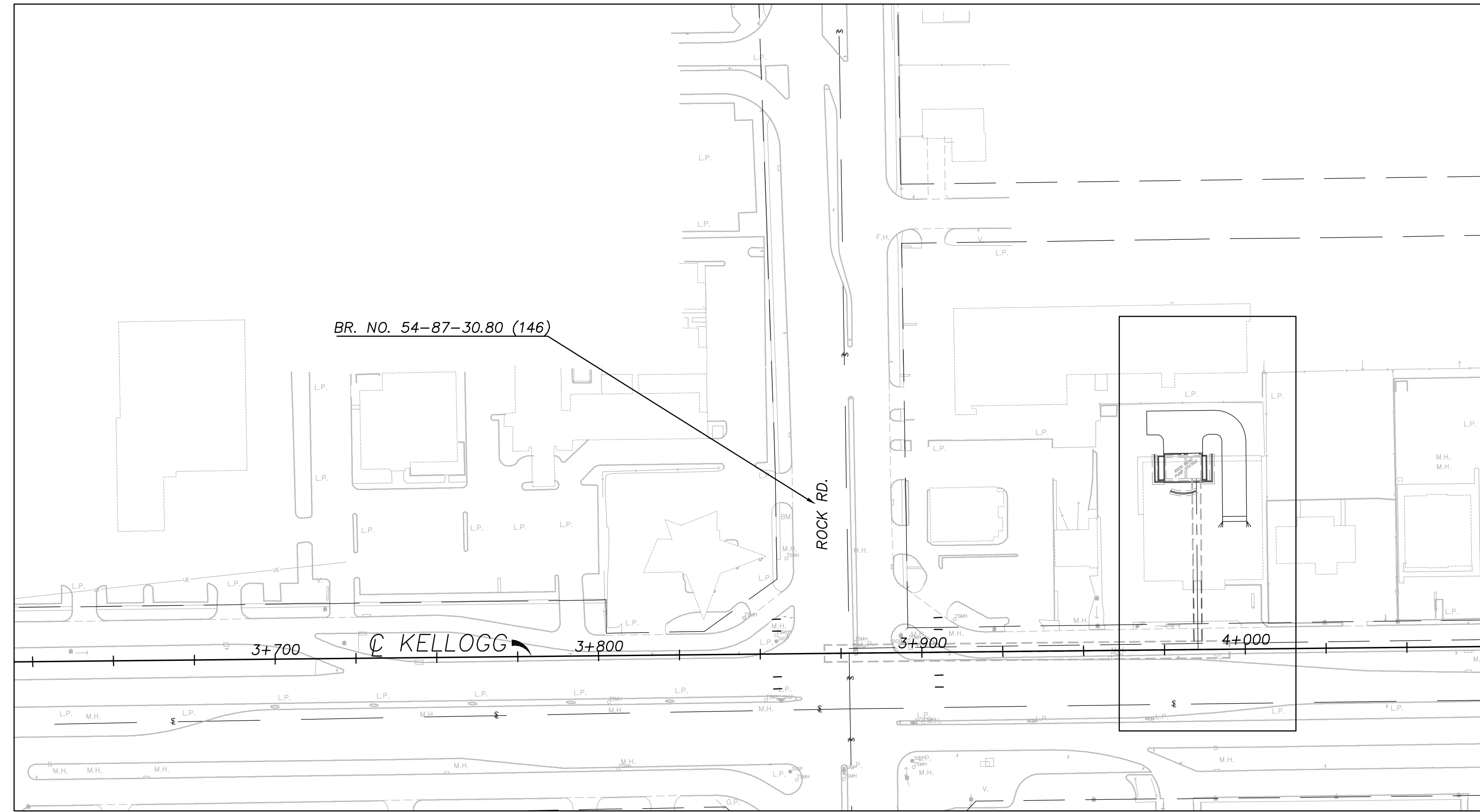
F.H.W.A. REGION NO.	STATE	PROJECT NO.	YEAR	SHEET NO.	TOTAL SHEETS
7	KANSAS	54-87 K-8258-03	2003	3	27

CENTERLINE KELLOGG COORDINATES

Station	Northing	Easting	Tangential Direction
3+200	513196.80725	510127.52382	N 89-24-09 E
3+300	513197.85024	510227.51838	N 89-24-09 E
3+400	513198.89323	510327.51294	N 89-24-09 E
3+500	513199.93622	510427.50750	N 89-24-09 E
3+600	513200.97921	510527.50206	N 89-24-09 E
3+700	513202.02220	510627.49662	N 89-24-09 E
3+800	513203.06519	510727.49118	N 89-24-09 E
3+900	513204.10818	510827.48574	N 89-24-09 E
4+000	513205.15117	510927.48030	N 89-24-09 E
4+100	513206.19416	511027.47487	N 89-24-09 E
4+200	513207.23715	511127.46943	N 89-24-09 E
4+300	513208.28014	511227.46399	N 89-24-09 E
4+400	513209.32313	511327.45855	N 89-24-09 E
4+500	513210.36612	511427.45311	N 89-24-09 E
4+600	513211.40911	511527.44767	N 89-24-09 E
4+700	513212.45210	511627.44223	N 89-24-09 E
4+800	513213.49509	511727.43679	N 89-24-09 E
4+900	513214.53808	511827.43135	N 89-24-09 E
5+000	513215.58106	511927.42591	N 89-24-09 E



DATE	
BY	
REFERENCE NOTED	
REFERENCE CHECKED	



NOTE: C PROPOSED KELLOGG IS TANGENT FROM STA. 3+103.006 THROUGH STA. 5+009.373 BEARING N 89°-24'-09" E.

Drawn by: [blank] Plotted: [blank] File: [blank] SCALE 1:1000



BM #15 "C" Cut S.W. Cor. Bridge 26.3 m W. & 12.6 m S. of C of Intersection Armour & Kellogg 27.6 m Rt. Armour @ Sta. 49+925.087 Elev. = 409.006

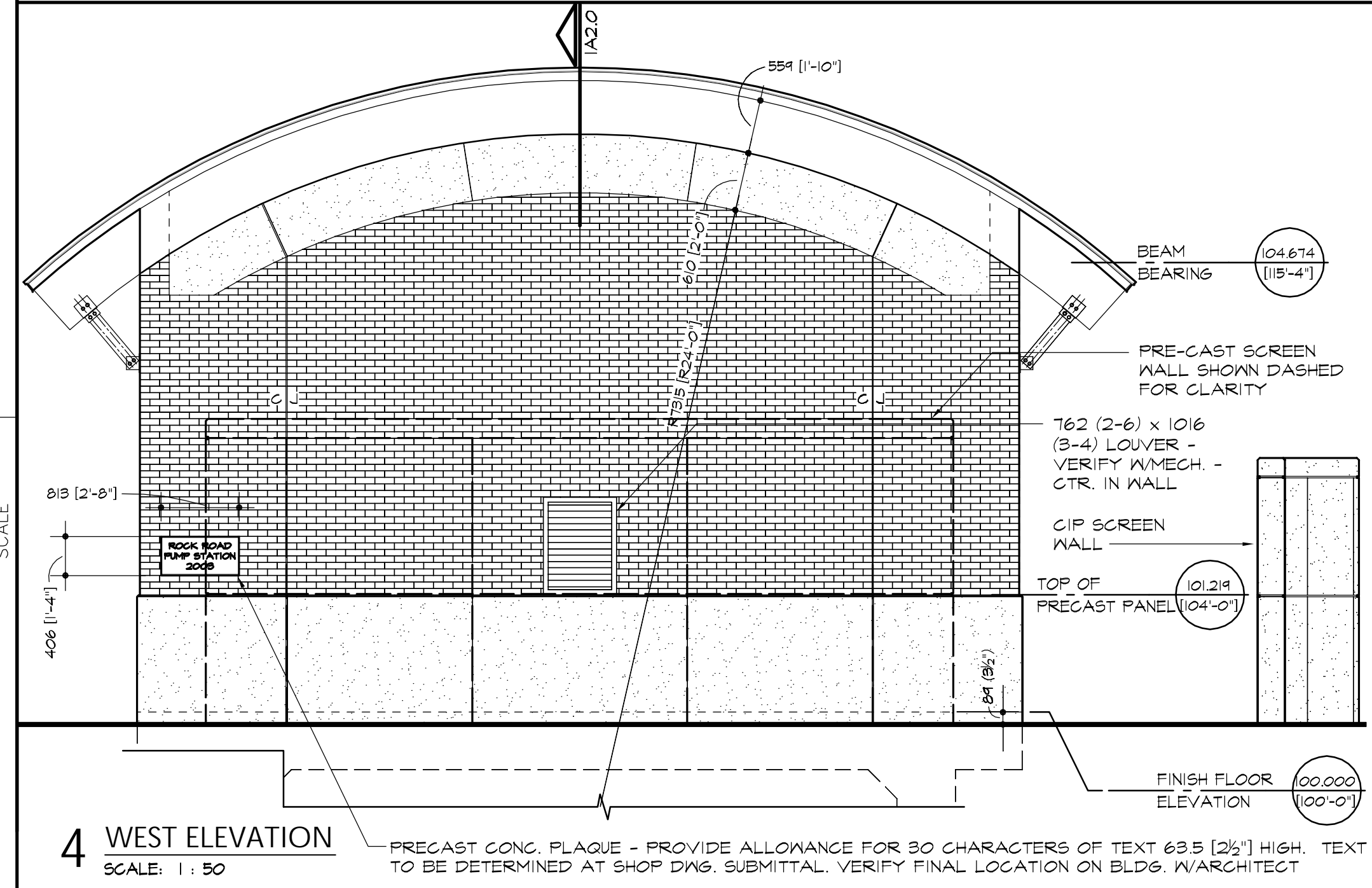
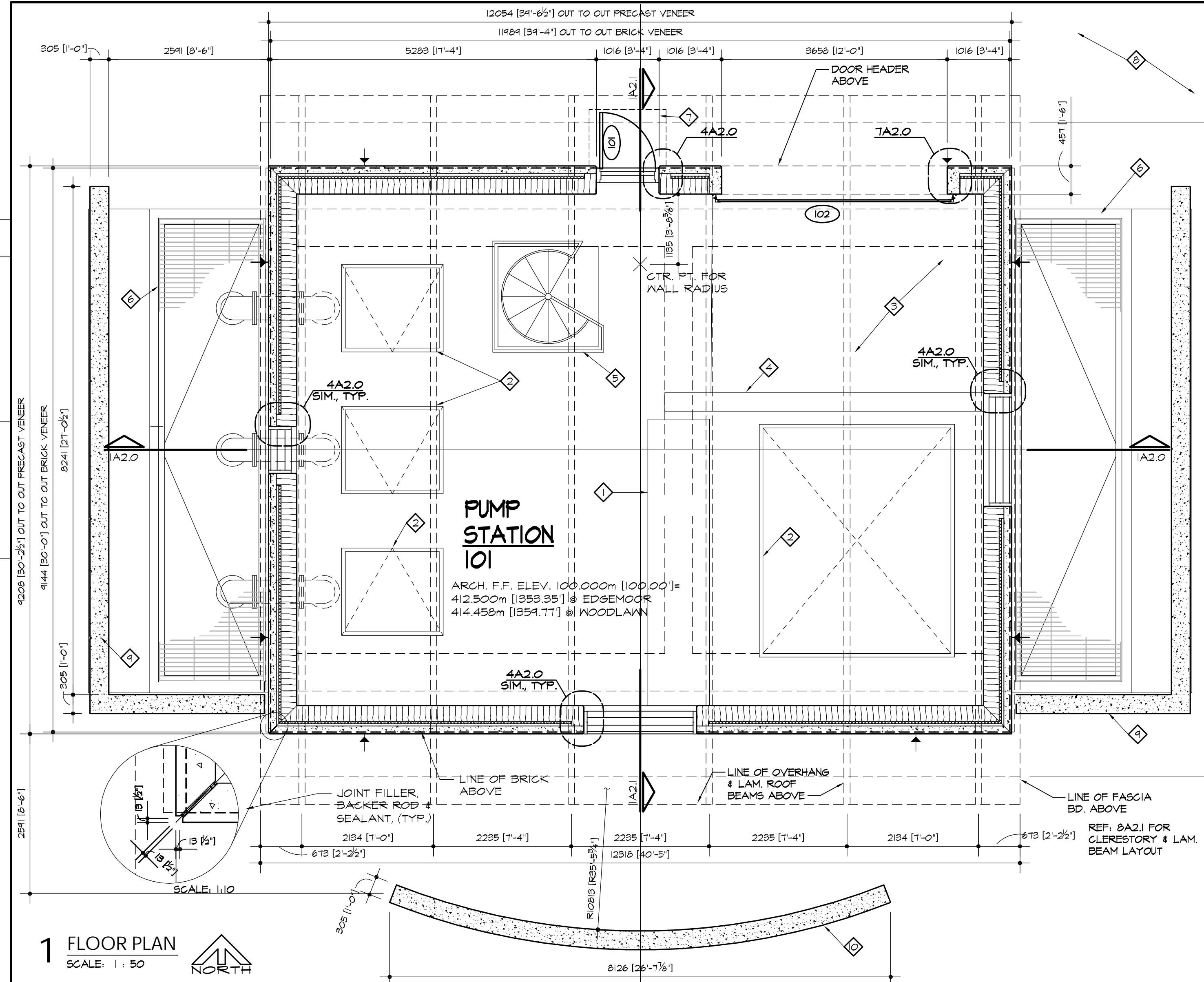
BM #16 - "C" Cut Top of Curb on the E. Curb Line of the Men's Warehouse, 35.0 m N. of C of N. Frontage Rd. 42.9 m Lt @ Sta. 3+504.4 Elev. = 410.195

KANSAS DEPARTMENT OF TRANSPORTATION  
**GEOMETRICS**  
**EAST KELLOGG US-54**  
 Wichita, Kansas Sedgwick, Co.

STATE	PROJECT NO.	YEAR	SHEET NO.	TOTAL SHEETS
KANSAS	54-87 K-8258-03	2003	4	27

**GEN. NOTES**

- SEE CIVIL & STRUCT. DWGS. FOR ITEMS AT OR BELOW ELEV. 100.000 INCLUDING ALL FTG. INSTALLATIONS
  - SEE SHEET A2.2 FOR SCREEN WALL DETAILS
- PLAN NOTES**
- CONC. GENERATOR PAD - REF. STRUCT. DWGS.
  - FLOOR HATCH - REF. STRUCT. DWGS.
  - SLOPE FLOOR TOWARDS O.H. DOOR - REF. STRUCT. DWGS.
  - WHEEL STOP - REF. STRUCT. DWGS.
  - SPIRAL STAIR & HANDRAIL - REF. STRUCT. DWGS.
  - VENTILATION & DRAINAGE PITS - REF. STRUCT. DWGS.
  - CONC. STEP - REF. STRUCT. DWGS.
  - REF. CIVIL DWGS. FOR ALL SITE WORK.
  - 12" CAST IN PLACE CONC. SCREEN WALL - REF. SHEET A2.2
  - 12" CAST IN PLACE CONC. SCREEN WALL - REF. STRUCTURAL

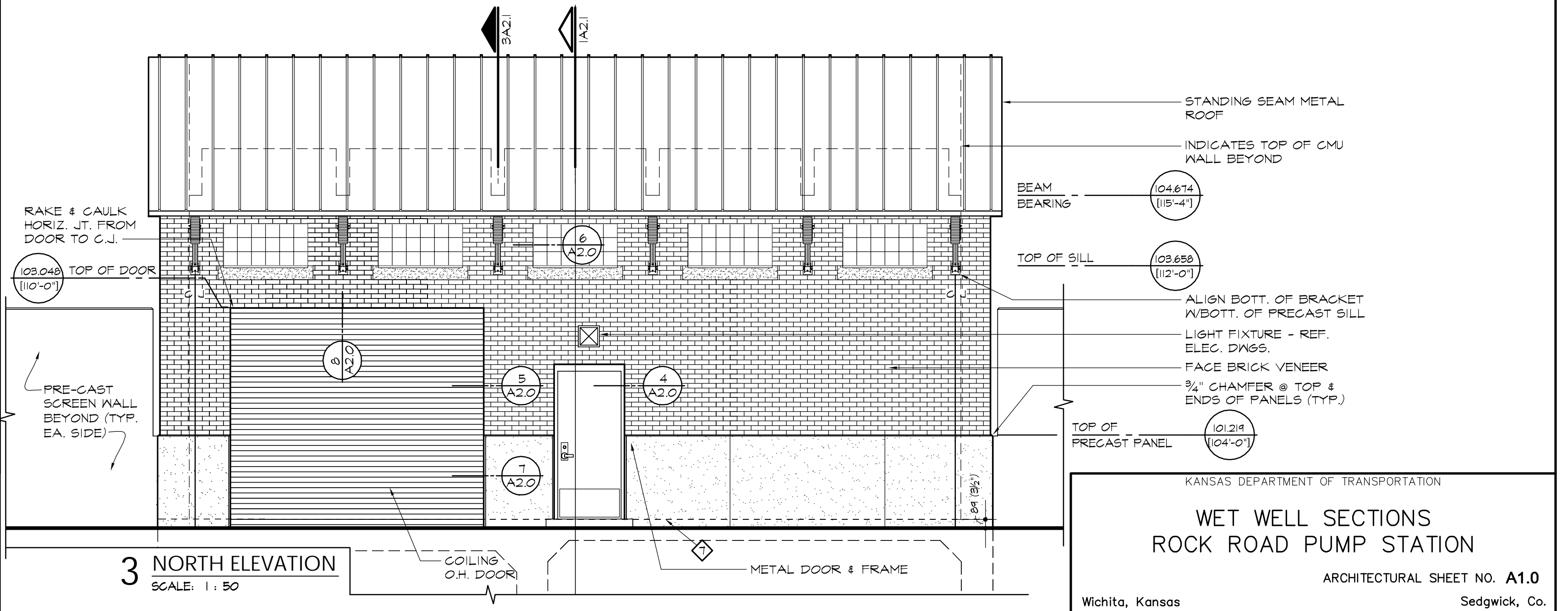
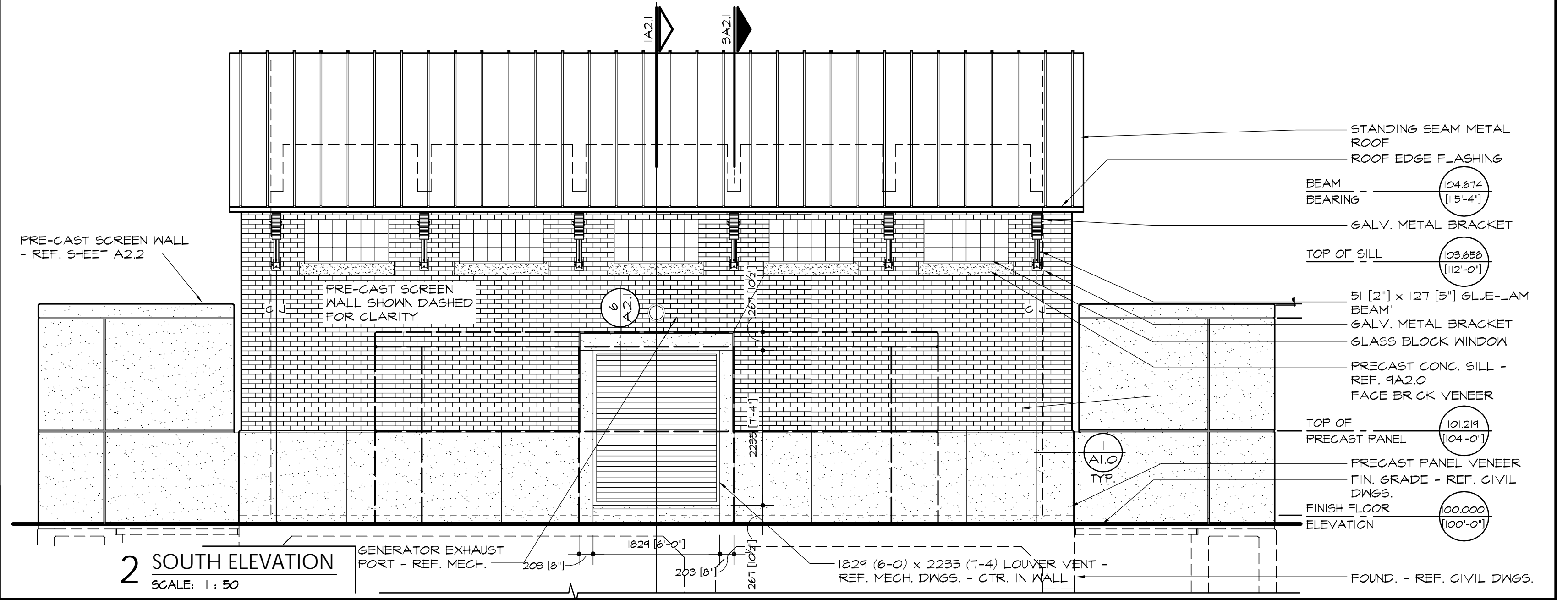
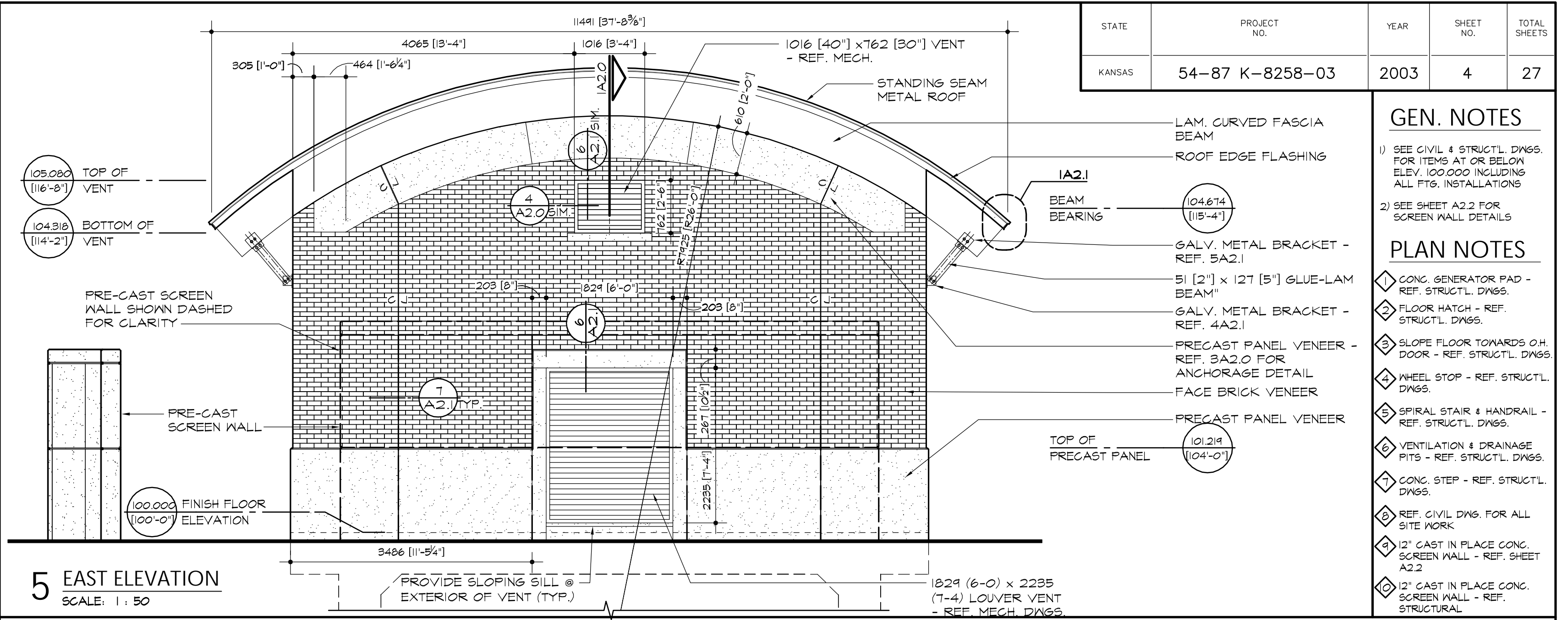


**MATERIALS LEGEND**

- Concrete (Elevation/Section)
- Precast Concrete
- Grout
- Light Weight Concrete
- Masonry Units as noted (Plan/sect.)
- Rigid Insulation
- Steel
- Wood Framing or Blocking
- Finish Wood
- Roof Insulation
- Batt Insulation
- Glass (Elevation/Section)

**ARCHITECTURAL GRAPHIC SYMBOLS**

- CONTROL JOINT
- DOOR MARK
- SECTION MARK: 3 = DETAIL NUMBER, A3.1 = SHEET NUMBER
- BUILDING SECTION WALL SECTION
- MASONRY WALL OR PARTITION
- CONTROL JOINT FROM BEARING TO TOP OF WALL. REF. 1A2.1
- MASONRY CONTROL JOINT FROM LINTEL BEARING TO TOP OF WALL OR BOND BEAM.



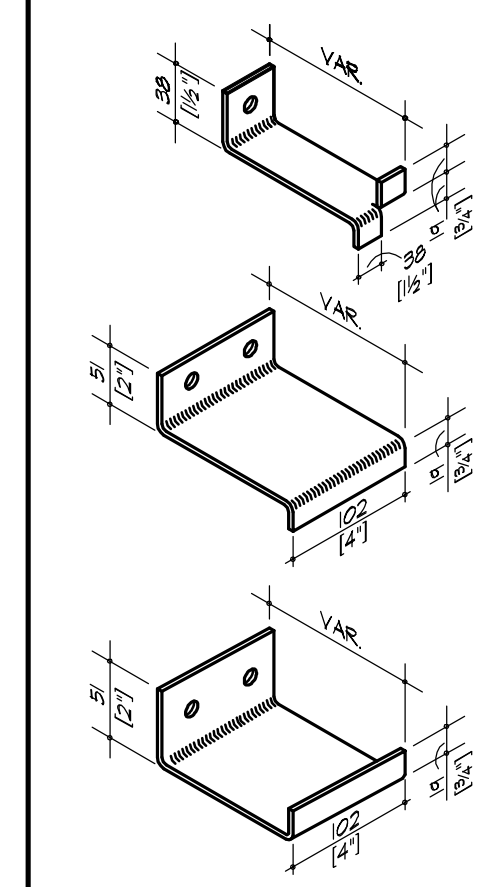
BY	DATE
REFERENCE NOTED	
REFERENCE CHECKED	

Drawn by: File: CD's  
 Plotted: SCALE

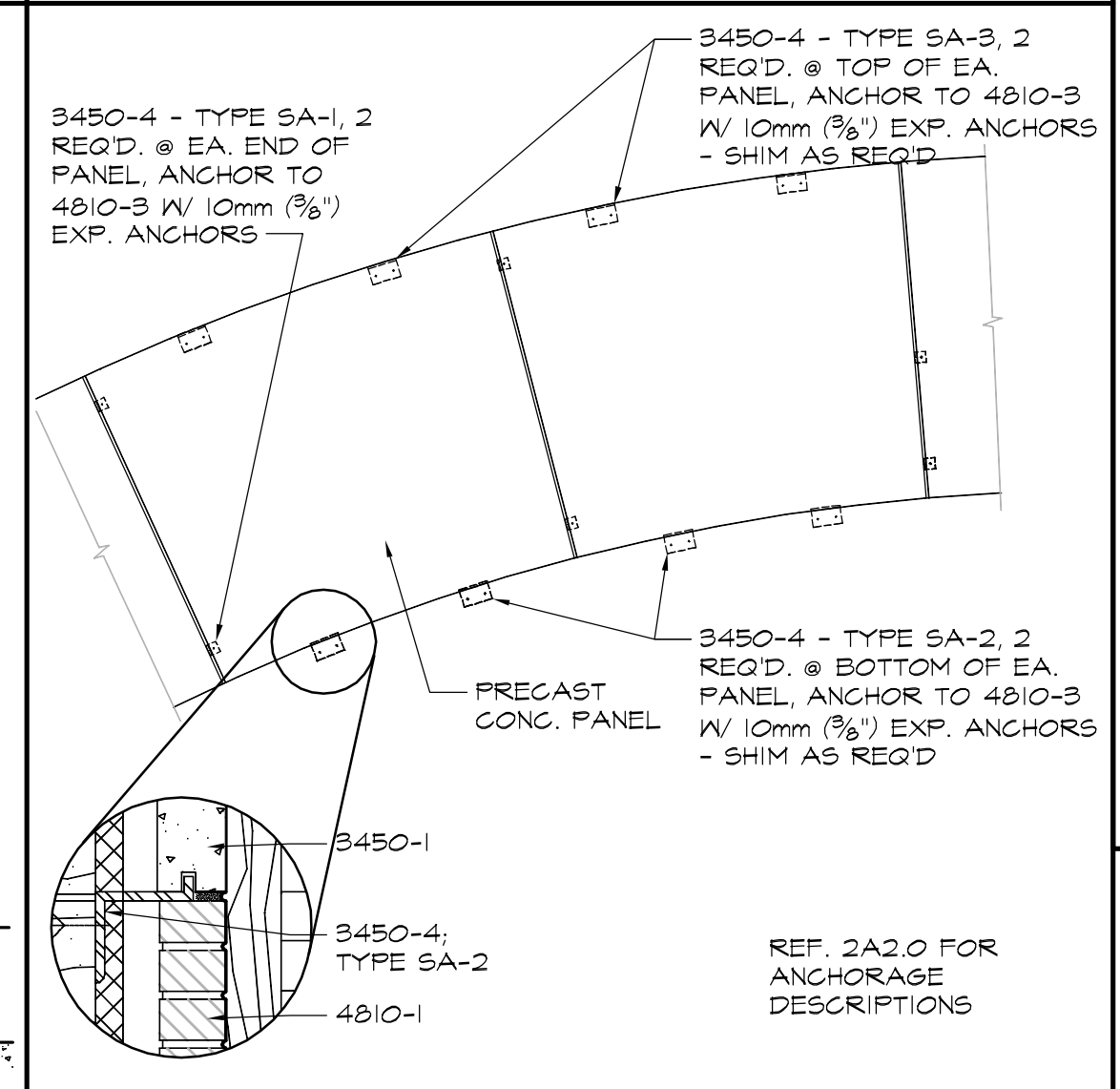
**KEYNOTES:**

Note: Keynotes are drawn from a master list & may not be sequentially numbered. Sizes (Ex. 2x4) or other info. following keynote on drawings indicates criteria for those materials / locations which may differ from std. material specified.

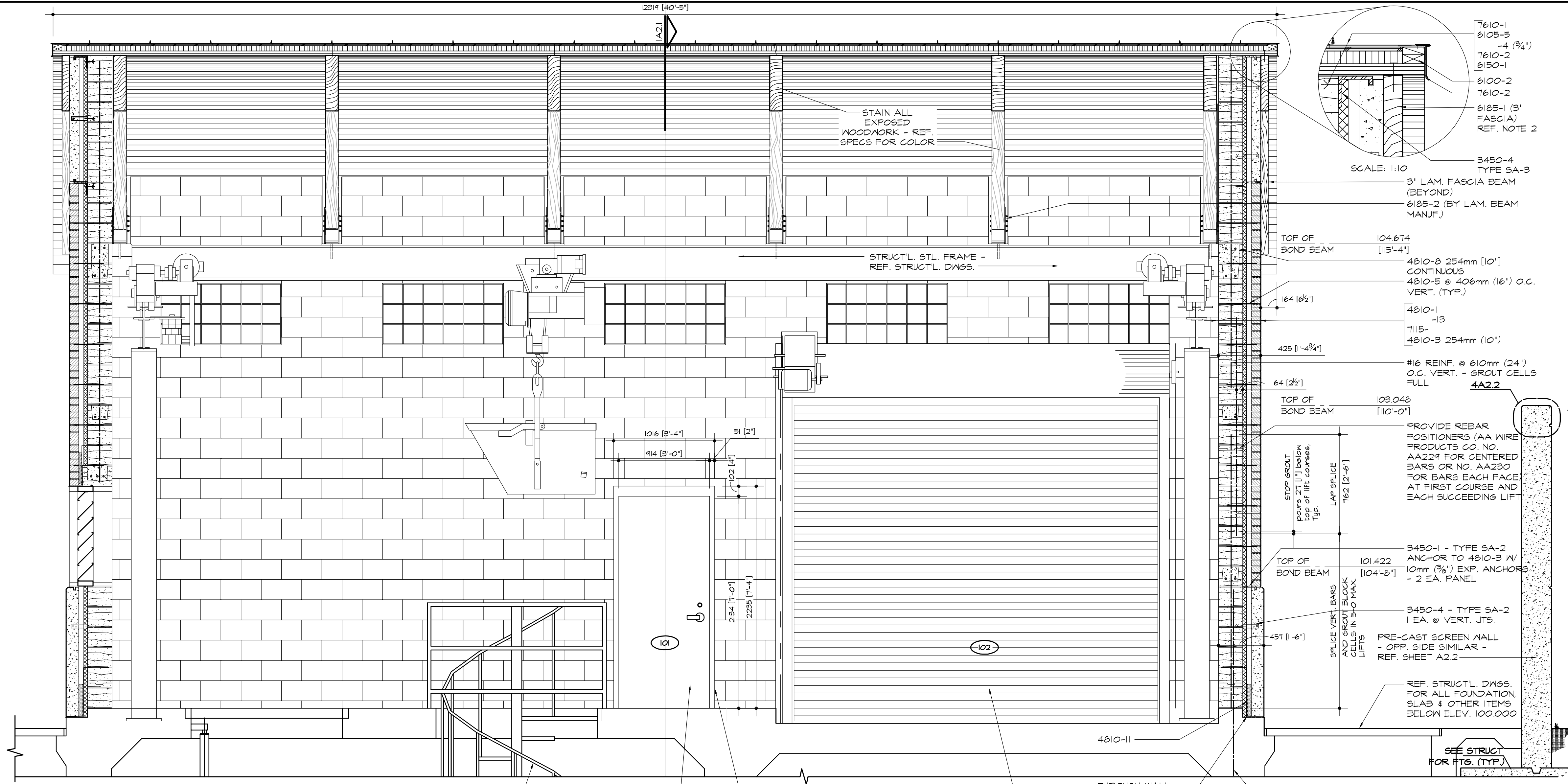
- 3450-1 Plant Pre Cast Architectural Concrete Panel
- 2 Plant Pre Cast Concrete Sill
- 3 Pre Cast Plaque
- 4 Anchor
- 4810-1 Face Brick
- 3 Concrete Masonry Unit - Lightweight (254mm [10"])
- 4 Wire Reinforcing
- 5 Metal Tie/Anchor
- 6 Through Wall Flashing
- 7 Control Joint Strip
- 8 Bond Beam (305mm [12"])
- 9 Compressible Filler
- 10 Weep Hole
- 11 Cavity Drainage Material
- 12 Cell Vent
- 13 Cavity Wall Insulation
- 4815-1 Glass Block
- 2 Mortar / Grout
- 6105-1 2x Wood Nailer
- 2 Wood Blocking Plywood
- 5 #30 Felt
- 6150-1 Wood Decking
- 6185-1 Structural Glue Laminated Timber
- 2 Galv. Metal Connector
- 7115-1 Bituminous Dampproofing
- 7210-2 Roof Insulation
- 3 Building Insulation - Unfaced
- 7610-1 Sheet Metal Roofing
- 2 Pre-Finished Roof Edge
- 7620-1 Galv. Sheet Metal Flashing and Counter flashing
- 7920-1 Sealant - Rake where required
- 2 Joint Filler
- 4 Backer Rod
- 8110-1 Steel Door
- 2 Steel Frame
- 3 Frame Anchor
- 8331-1 Overhead Coiling Door



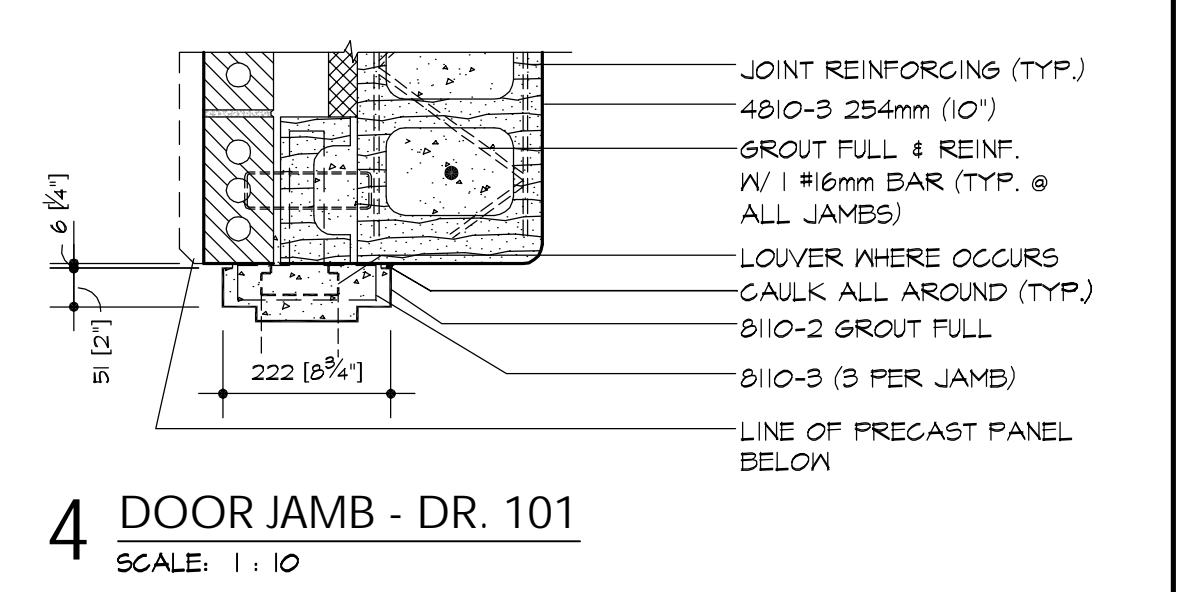
**2 TYPICAL PRECAST ANCHORS**  
SCALE: NTS



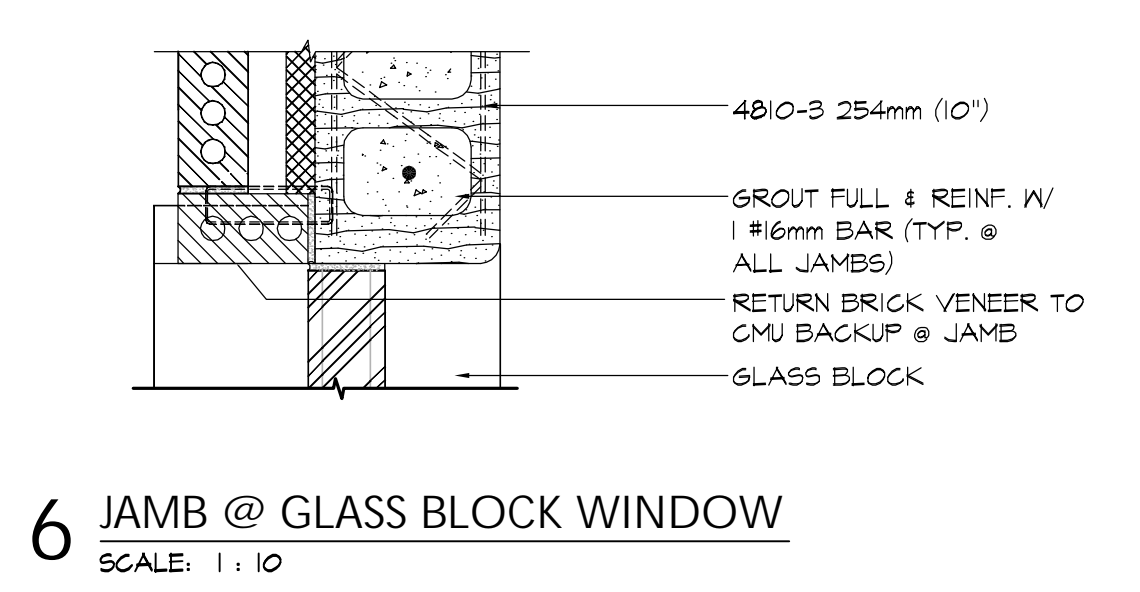
**3 TYP. PRECAST ANCHORAGE DETAIL @ ENDWALLS**  
SCALE: 1:25



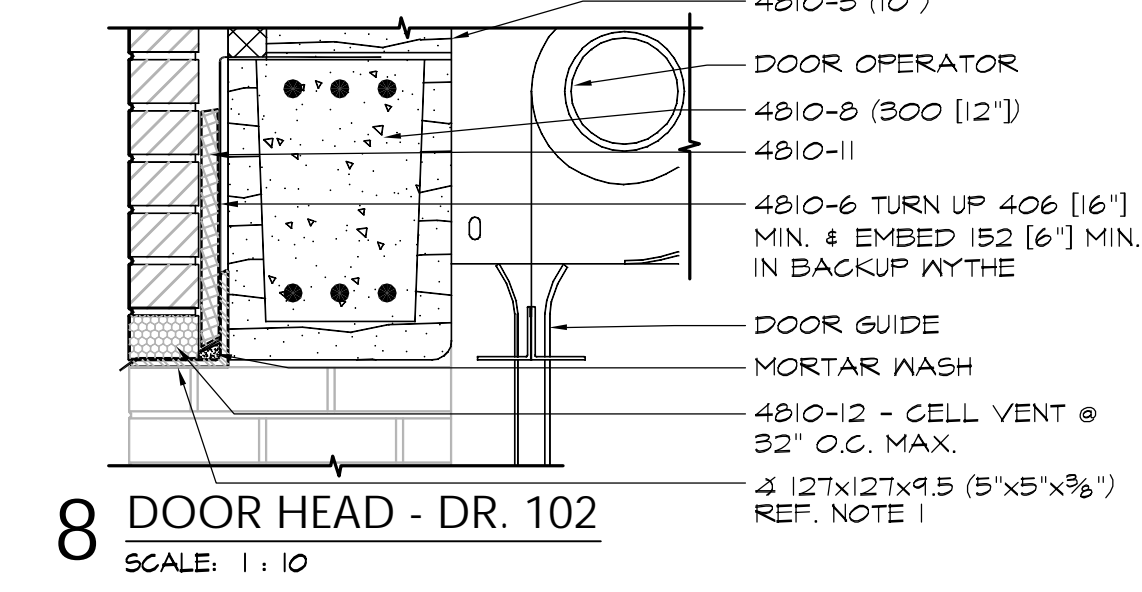
**1 LONGITUDINAL SECTION**  
SCALE: 1:25



**4 DOOR JAMB - DR. 101**  
SCALE: 1:10



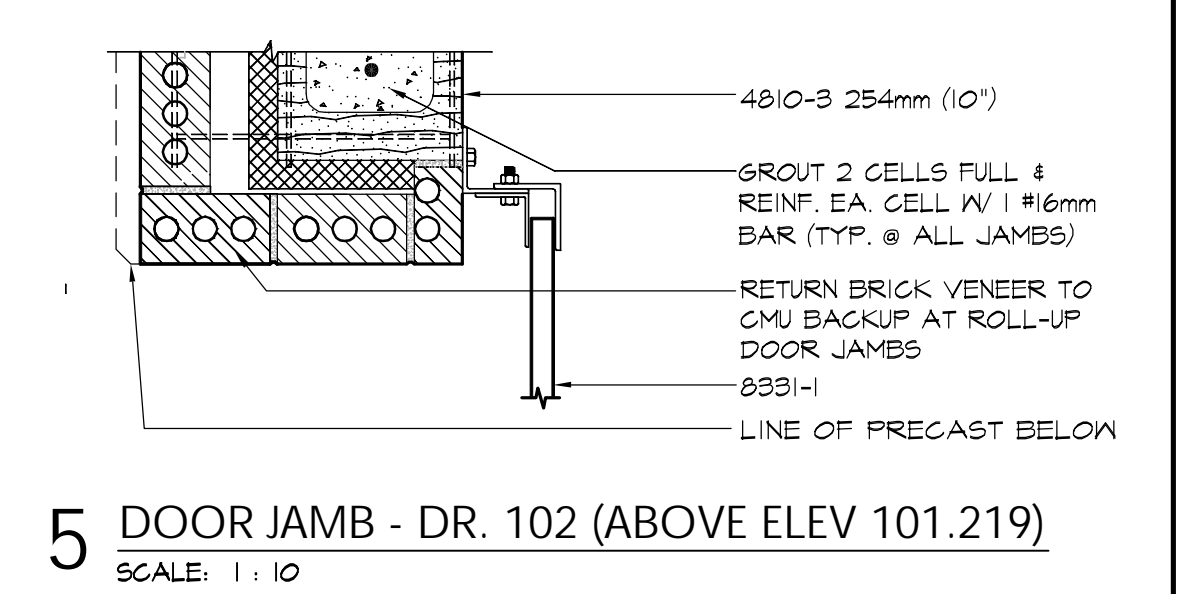
**6 JAMB @ GLASS BLOCK WINDOW**  
SCALE: 1:10



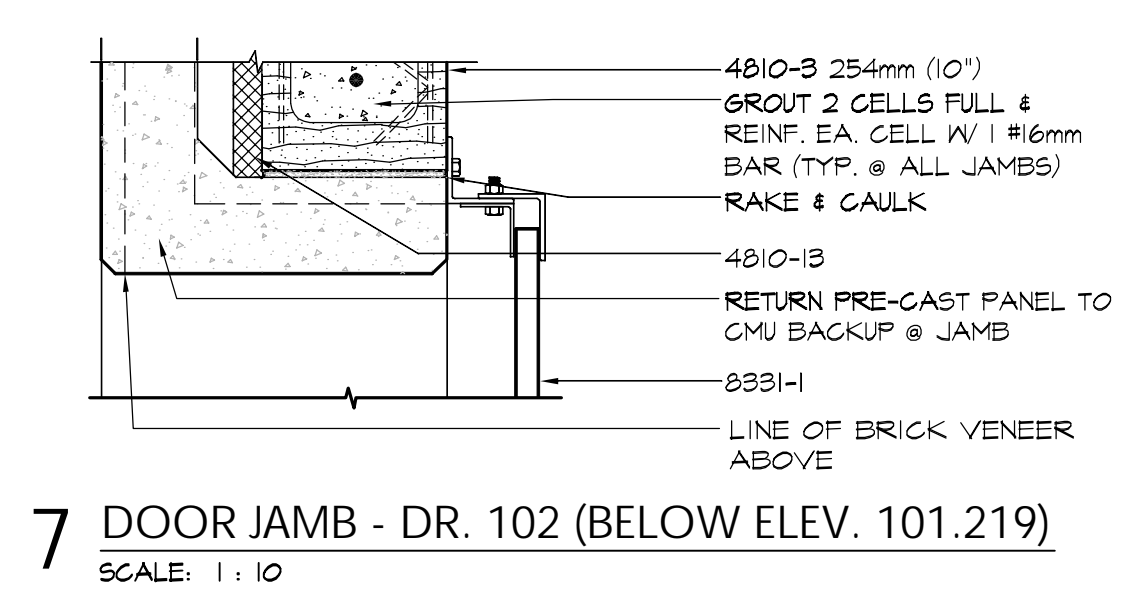
**8 DOOR HEAD - DR. 102**  
SCALE: 1:10

**DOOR SCHEDULE**

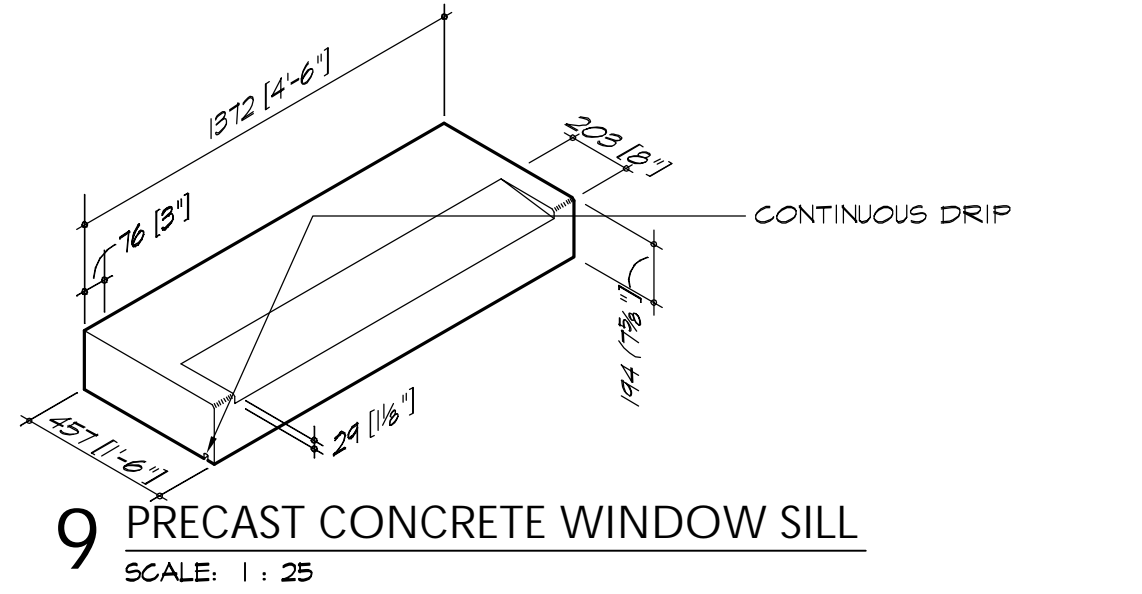
PLAN MARK	FROM ROOM	TO ROOM	DOOR		FRAME				HIDE SET (E)	LABEL (MIN)	NOTES (F)
			SIZE OPENING (W x H)	TYPE	MATL. (A)	MATL. (B)	DETAILS (D)	DETAILS (D)			
101	EXT.	101	415 (3'-0") x 2134 (7'-0")	-	ST	-	ST	IA2.1	4A2.1	-	-
102	EXT.	101	3658 (12'-0") x 3048 (10'-0")	-	ST	-	ST	8A2.0	5#1A2.0	-	-



**5 DOOR JAMB - DR. 102 (ABOVE ELEV. 101.219)**  
SCALE: 1:10



**7 DOOR JAMB - DR. 102 (BELOW ELEV. 101.219)**  
SCALE: 1:10



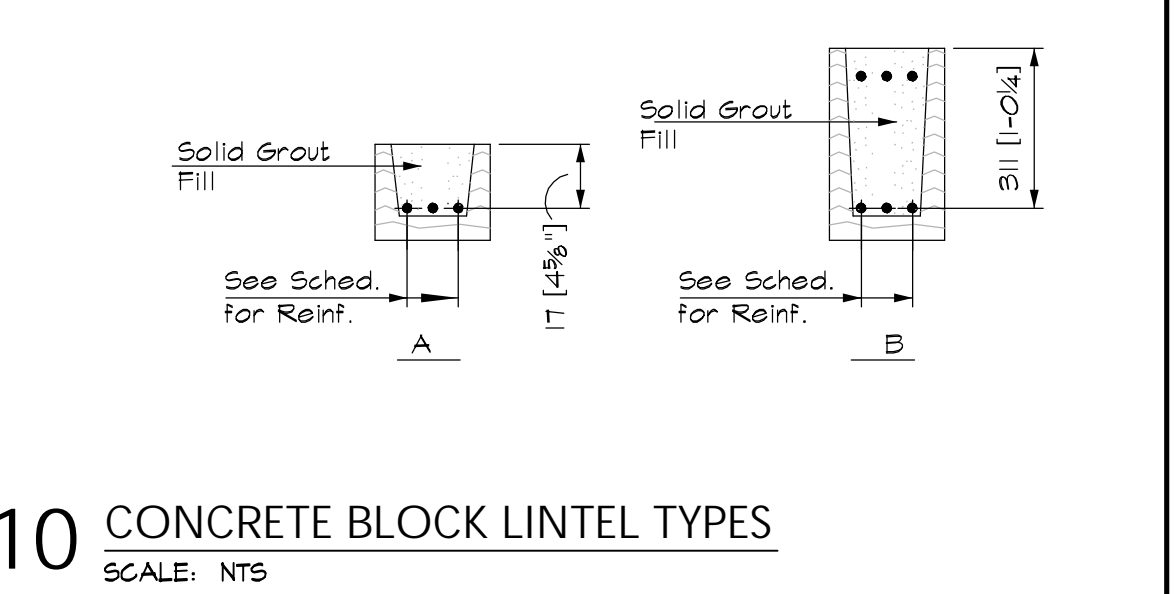
**9 PRECAST CONCRETE WINDOW SILL**  
SCALE: 1:25

**BLOCK LINTEL SCHEDULE**

TYPICAL TABLE OF UNMARKED CONCRETE BLOCK LINTELS

NOMINAL MASONRY WALL THICKNESS	MAX. MASONRY OPENING SPAN	NOMINAL LINTEL SECTION	TYPE	MIN. BEARING EACH END	NOTES
254 (10")	1219 (4'-0")	300 (12") x 203 (8") w/3-#16	A	203 (8")	
254 (10")	1626 (5'-4")	300 (12") x 203 (8") w/3-#16	A	203 (8")	
254 (10")	3658 (12'-0")	300 (12") x 406 (16") w/6-#19*	B	406 (16")	

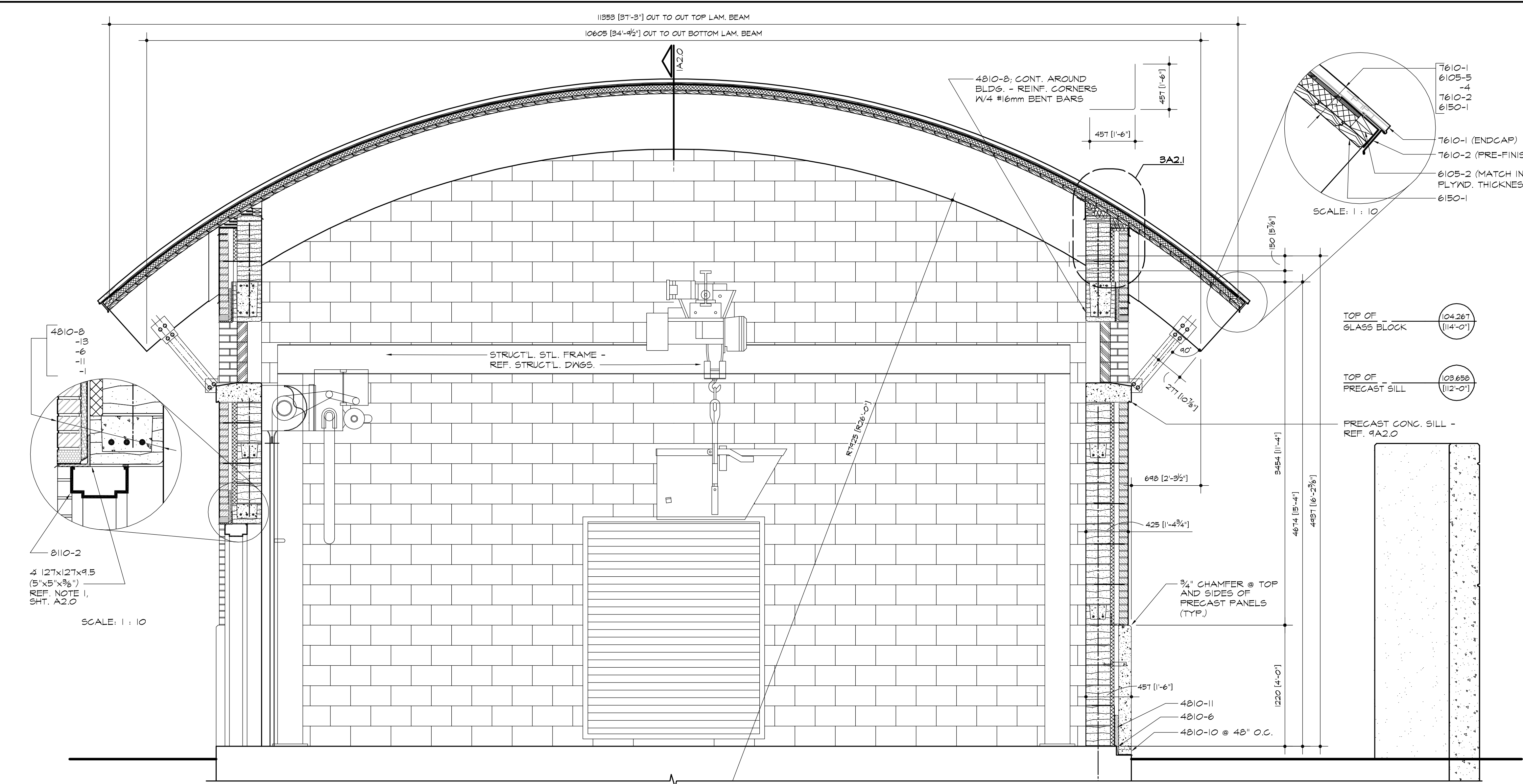
\* 6 - #16 @ LINTEL ABOVE GLASS BLOCK WINDOWS



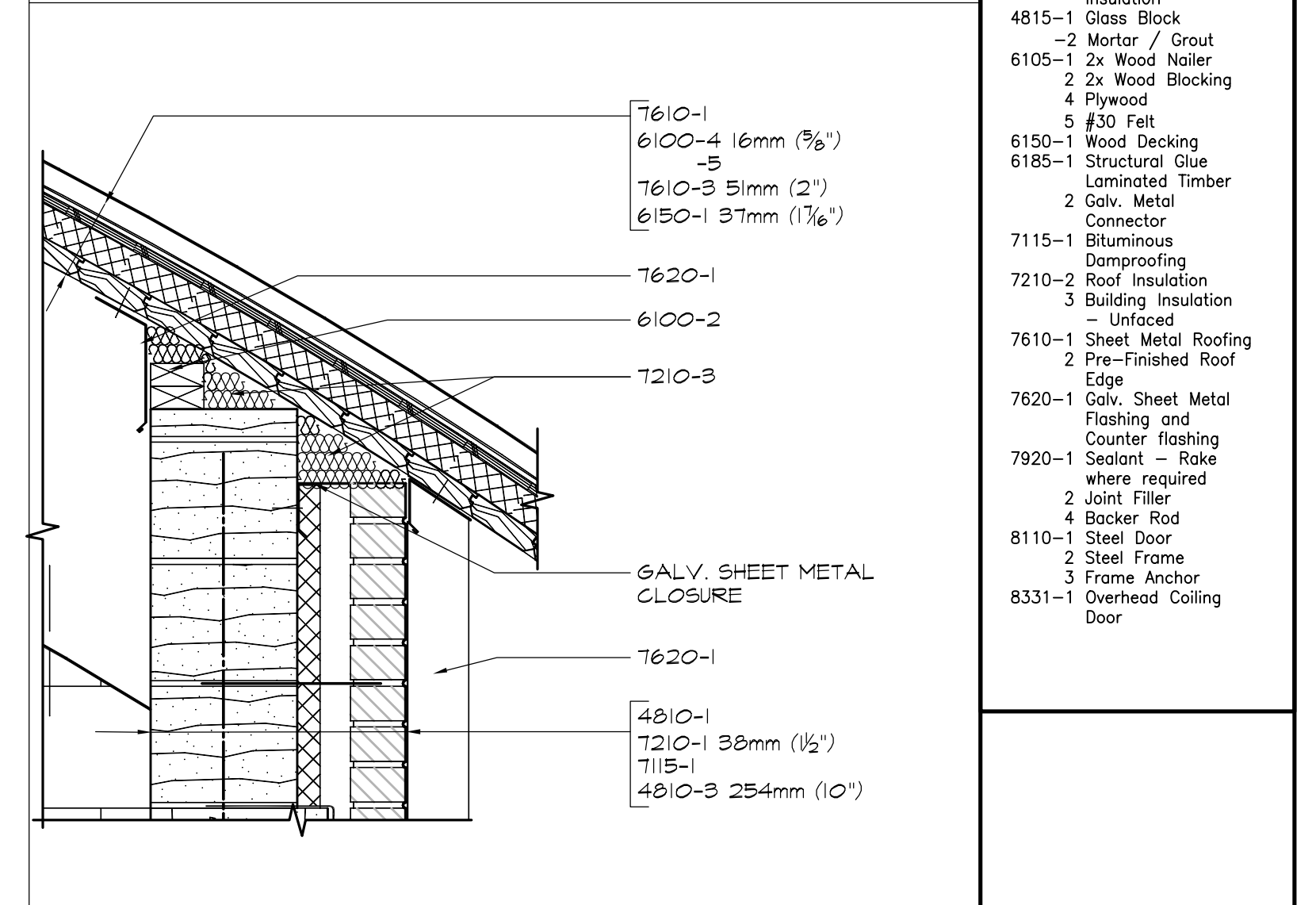
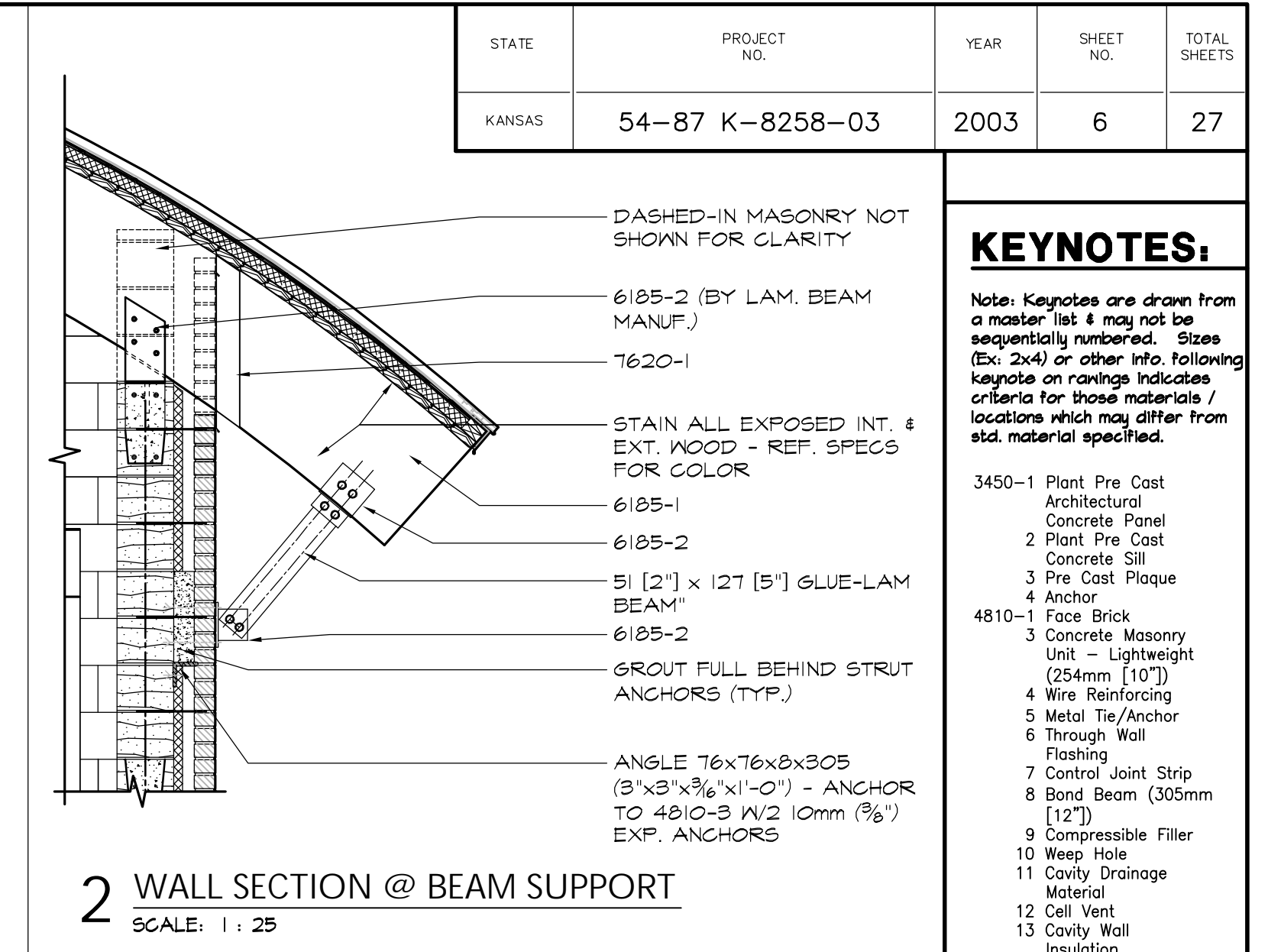
**10 CONCRETE BLOCK LINTEL TYPES**  
SCALE: NTS

STATE	PROJECT NO.	YEAR	SHEET NO.	TOTAL SHEETS
KANSAS	54-87 K-8258-03	2003	6	27

BY	DATE
REFERENCE NOTED	REFERENCE CHECKED

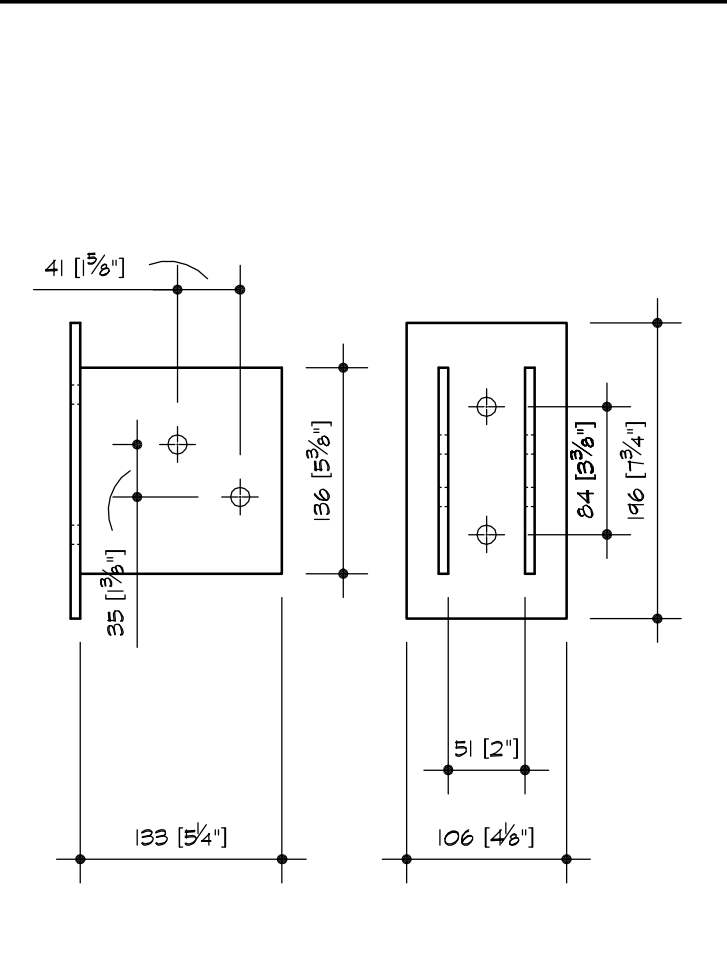


**1 CROSS SECTION**  
SCALE: 1:25

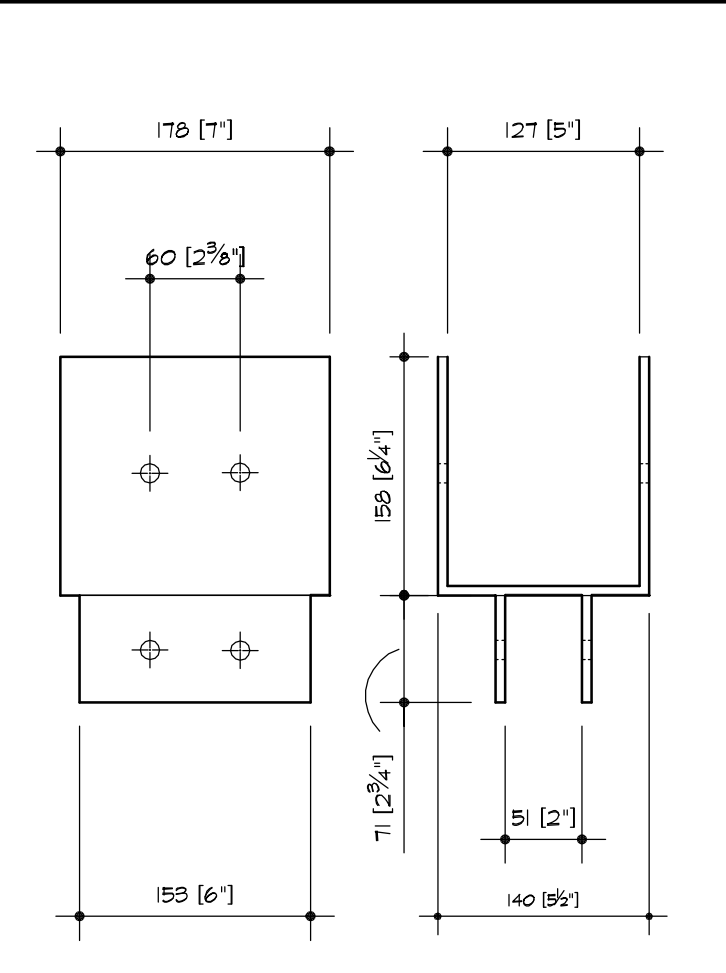


**3 EXTERIOR WALL CLOSURE @ ROOF**  
SCALE: 1:10

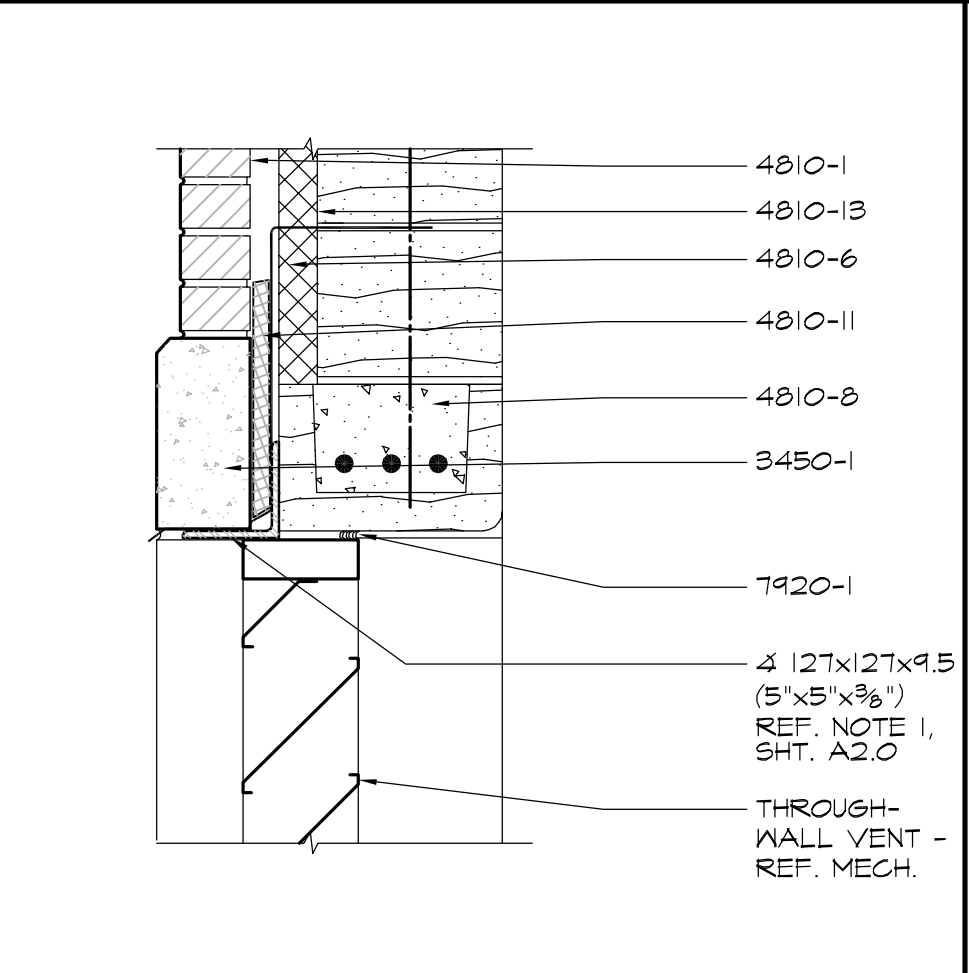
- KEYNOTES:**  
Note: Keynotes are drawn from a master list & may not be sequentially numbered. Sizes (Ex: 2x4) or other info following keynotes on drawings indicates criteria for those materials / locations which may differ from std. material specified.
- 3450-1 Plant Pre Cast Architectural Concrete Panel
  - 2 Plant Pre Cast Concrete Sill
  - 3 Pre Cast Plaque
  - 4 Anchor
  - 4810-1 Face Brick
  - 3 Concrete Masonry Unit - Lightweight (254mm [10"])
  - 4 Wire Reinforcing
  - 5 Metal Tie/Anchor
  - 6 Through Wall Flashing
  - 7 Control Joint Strip
  - 8 Bond Beam (305mm [12"])
  - 9 Compressible Filler
  - 10 Weep Hole
  - 11 Cavity Drainage Material
  - 12 Cell Vent
  - 13 Cavity Wall Insulation
  - 4815-1 Glass Block
  - 2 Mortar / Grout
  - 6105-1 2x Wood Nailer
  - 2x Wood Blocking
  - 4 Plywood
  - 5 #30 Felt
  - 6150-1 Wood Decking
  - 6185-1 Structural Glue Laminated Timber
  - 2 Galv. Metal Connector
  - 7115-1 Bituminous Dampproofing
  - 7210-2 Roof Insulation - Unfaced
  - 3 Building Insulation
  - 7610-1 Sheet Metal Roofing
  - 2 Pre-Finished Roof Edge
  - 7620-1 Galv. Sheet Metal Flashing and Counter flashing
  - 7920-1 Sealant - Rake where required
  - 2 Joint Filler
  - 4 Backer Rod
  - 8110-1 Steel Door
  - 2 Steel Frame
  - 3 Frame Anchor
  - 8331-1 Overhead Coiling Door



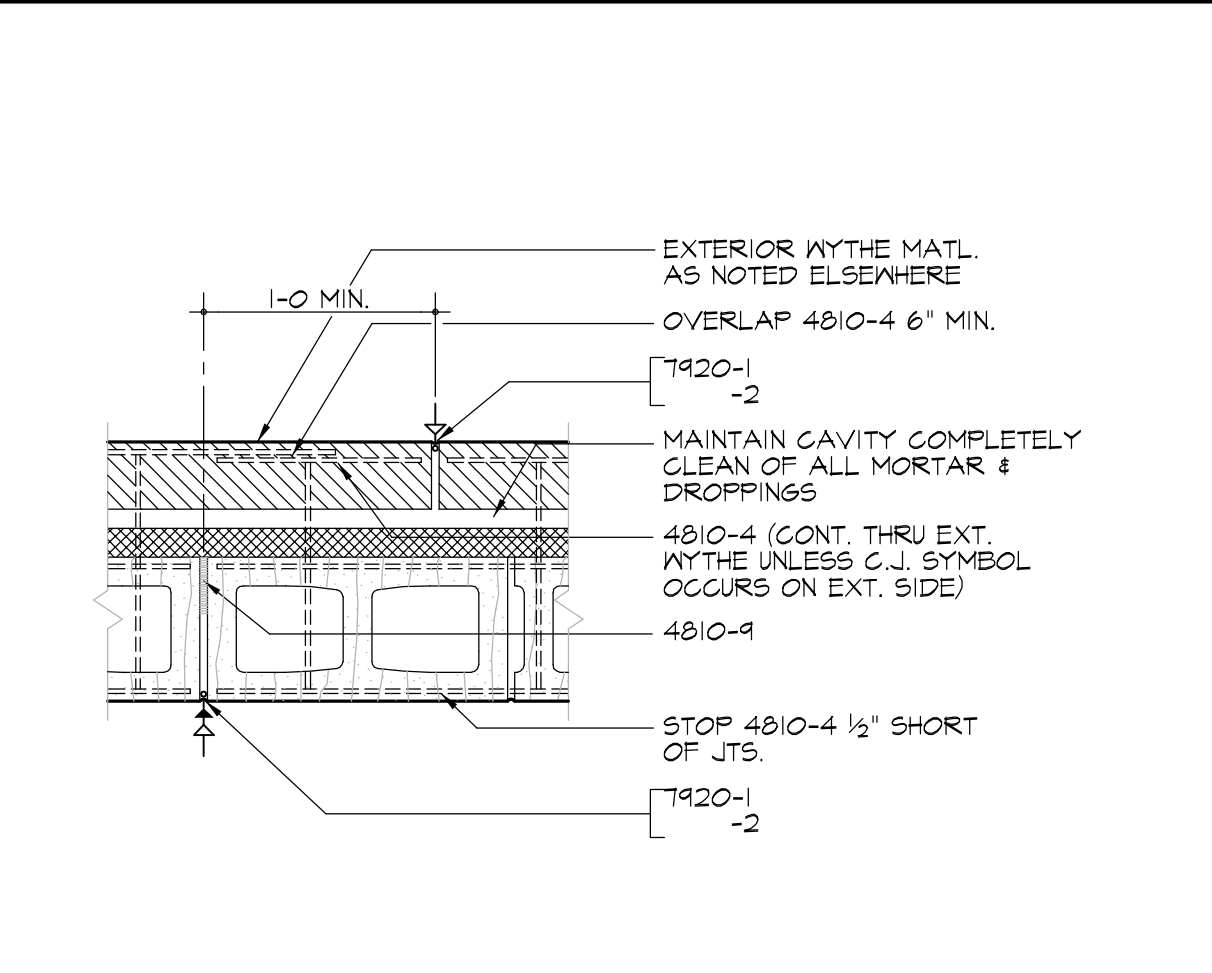
**4 LAM. BEAM BRACKET 'A'**  
SCALE: 1:5



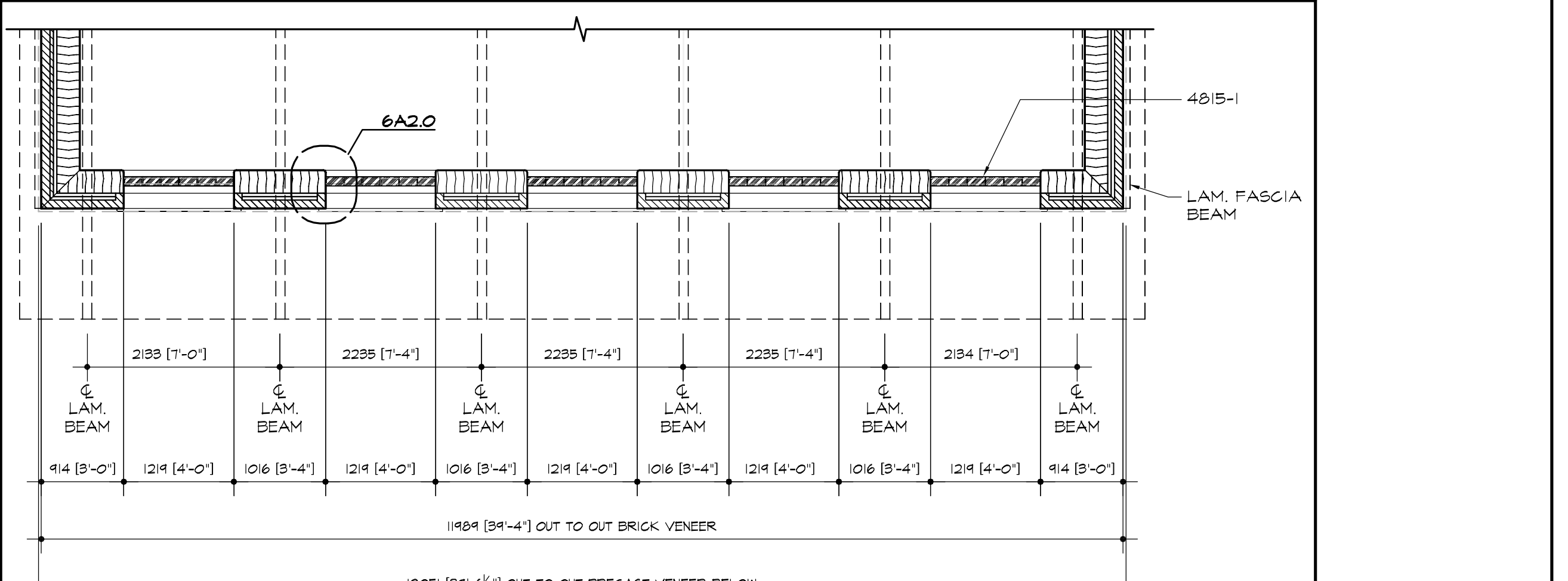
**5 LAM. BEAM BRACKET 'B'**  
SCALE: 1:5



**6 HEAD DETAIL @ THROUGH WALL VENT**  
SCALE: 1:10



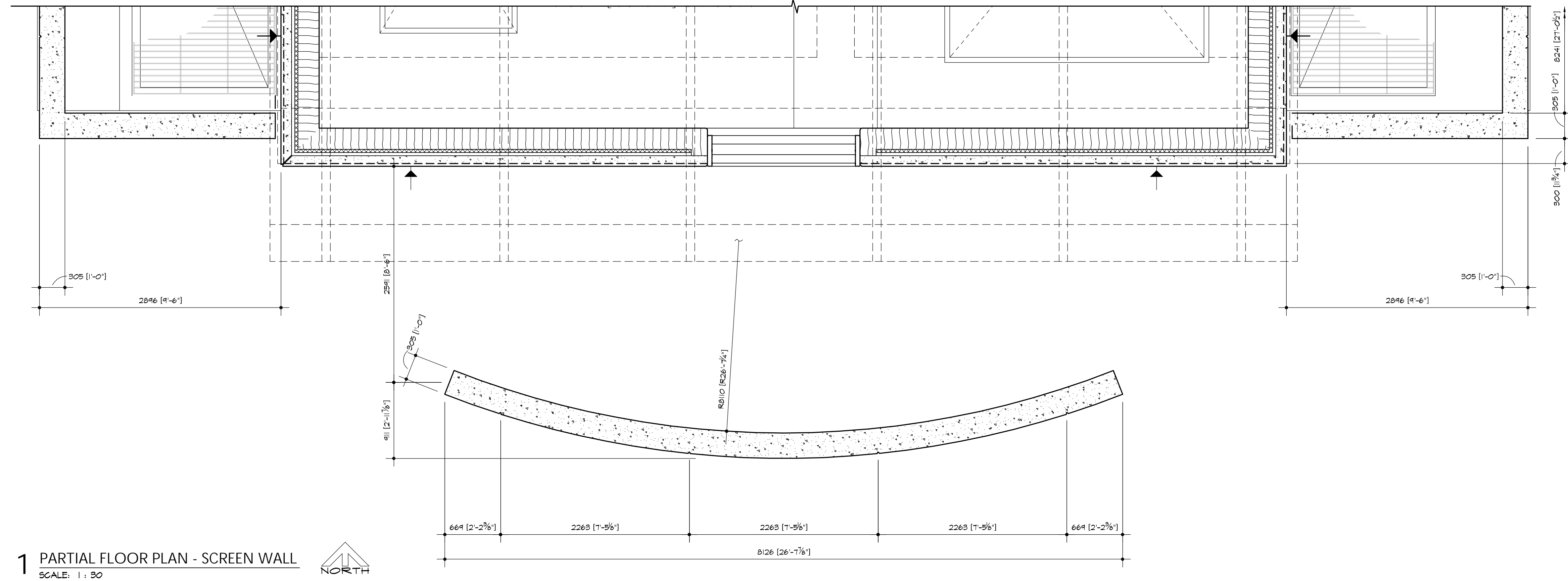
**7 TYP. MASONRY SHRINKAGE CONTROL JOINT**  
SCALE: 1:10



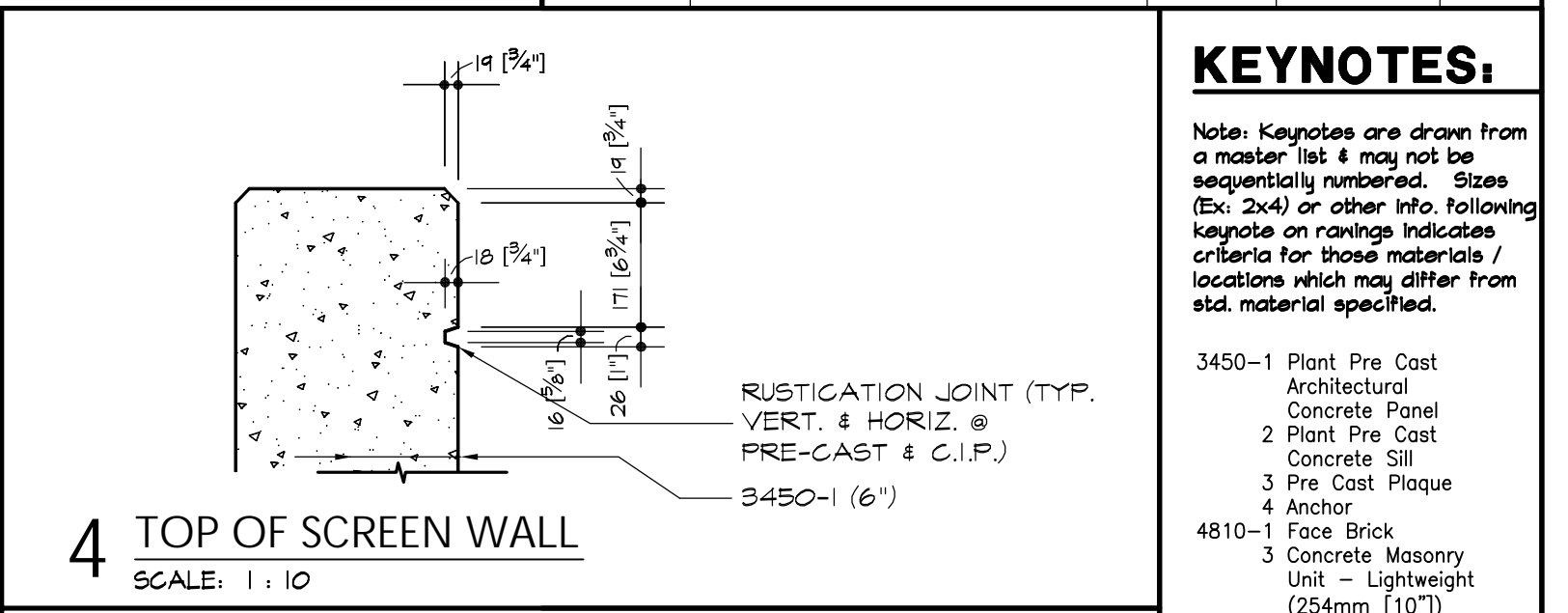
**8 PARTIAL CLERESTORY PLAN**  
SCALE: 1:50

STATE	PROJECT NO.	YEAR	SHEET NO.	TOTAL SHEETS
KANSAS	54-87 K-8258-03	2003	7	27

BY	DATE
REFERENCE NOTED	REFERENCE CHECKED



**1 PARTIAL FLOOR PLAN - SCREEN WALL**  
SCALE: 1 : 30

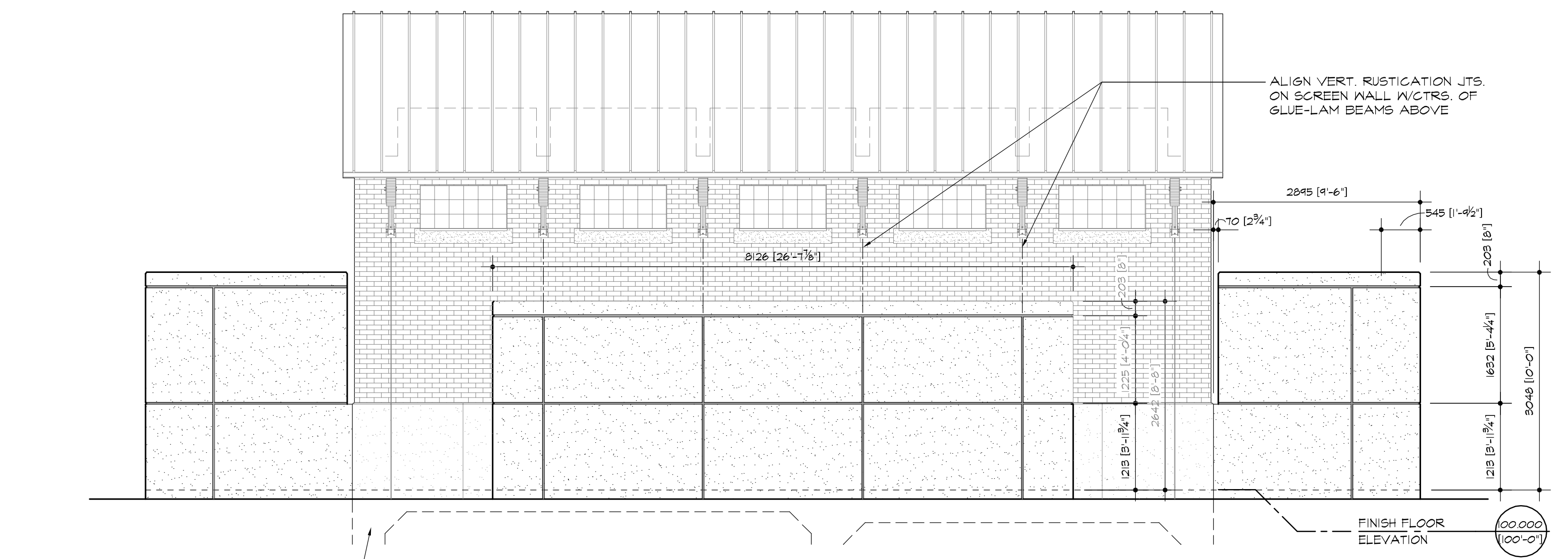


**4 TOP OF SCREEN WALL**  
SCALE: 1 : 10

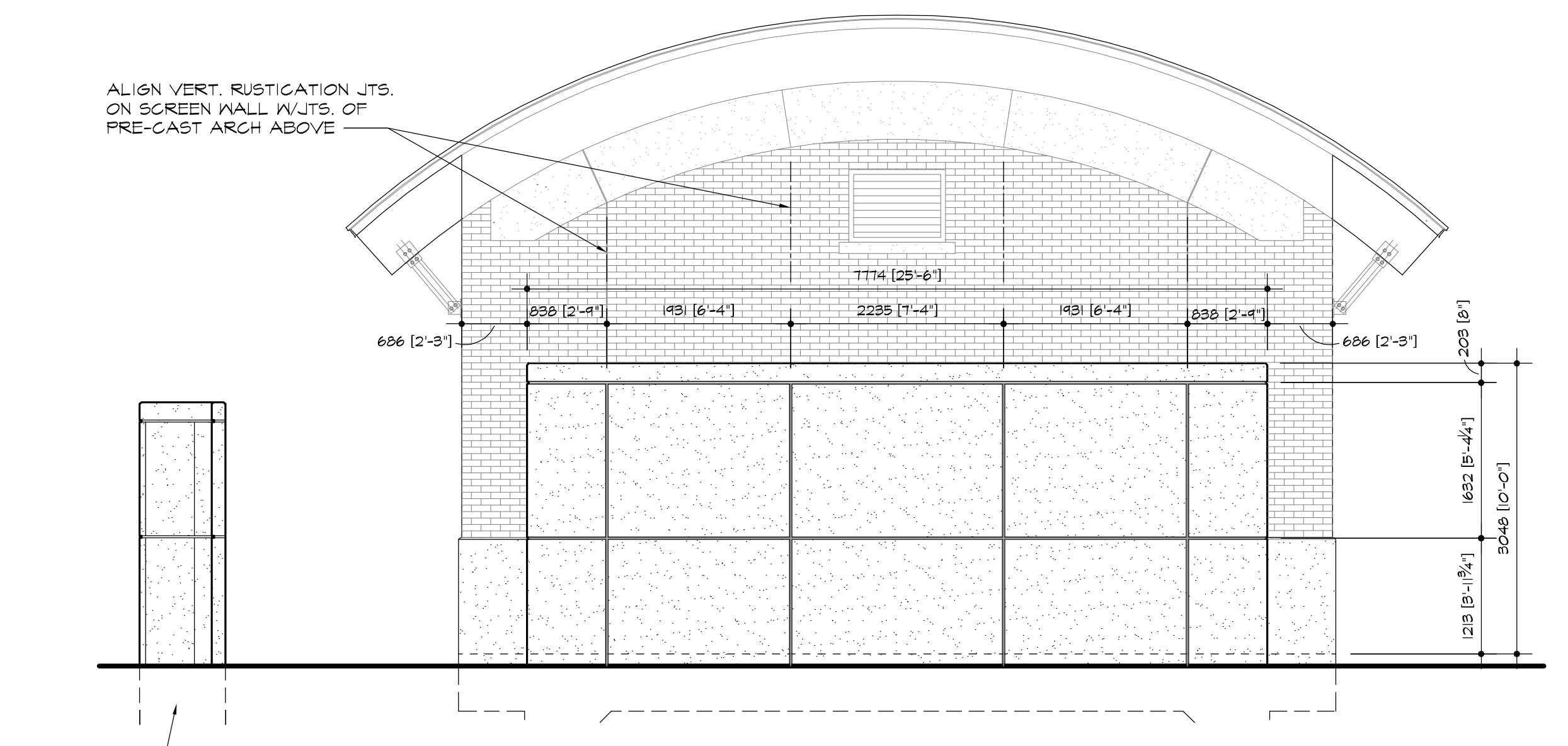
**KEYNOTES:**

Note: Keynotes are drawn from a master list & may not be sequentially numbered. Sizes (Ex: 2x4) or other info. following keynote on drawings indicates criteria for those materials / locations which may differ from std. material specified.

- 3450-1 Plant Pre Cast Architectural Concrete Panel
- 2 Plant Pre Cast Concrete Sill
- 3 Pre Cast Plaque
- 4 Anchor
- 4810-1 Face Brick
- 3 Concrete Masonry Unit - Lightweight (254mm [10"])
- 4 Wire Reinforcing
- 5 Metal Tie/Anchor
- 6 Through Wall Flashing
- 7 Control Joint Strip
- 8 Bond Beam (305mm [12"])
- 9 Compressible Filler
- 10 Weep Hole
- 11 Cavity Drainage Material
- 12 Cell Vent
- 13 Cavity Wall Insulation
- 4815-1 Glass Block
- 2 Mortar / Grout
- 6105-1 2x Wood Nailer
- 4 Plywood
- 5 #30 Felt
- 6150-1 Wood Decking
- 6185-1 Structural Glue Laminated Timber
- 2 Galv. Metal Connector
- 7115-1 Bituminous Damproofing
- 7210-2 Roof Insulation - Unifaced
- 7610-1 Sheet Metal Roofing
- 2 Pre-Finished Roof Edge
- 7620-1 Galv. Sheet Metal Flashing and Counter flashing Sealant - Rake where required
- 7920-1 Joint Filler
- 4 Backer Rod
- 8110-1 Steel Door
- 2 Steel Frame
- 3 Frame Anchor
- 8331-1 Overhead Coiling Door



**2 SOUTH ELEVATION (Showing Screen Wall)**  
SCALE: 1 : 50



**3 EAST ELEVATION (Showing Screen Wall) West Similar**  
SCALE: 1 : 50

Drawn by: \_\_\_\_\_  
File: \_\_\_\_\_  
Plotted: \_\_\_\_\_  
SCALE: \_\_\_\_\_