

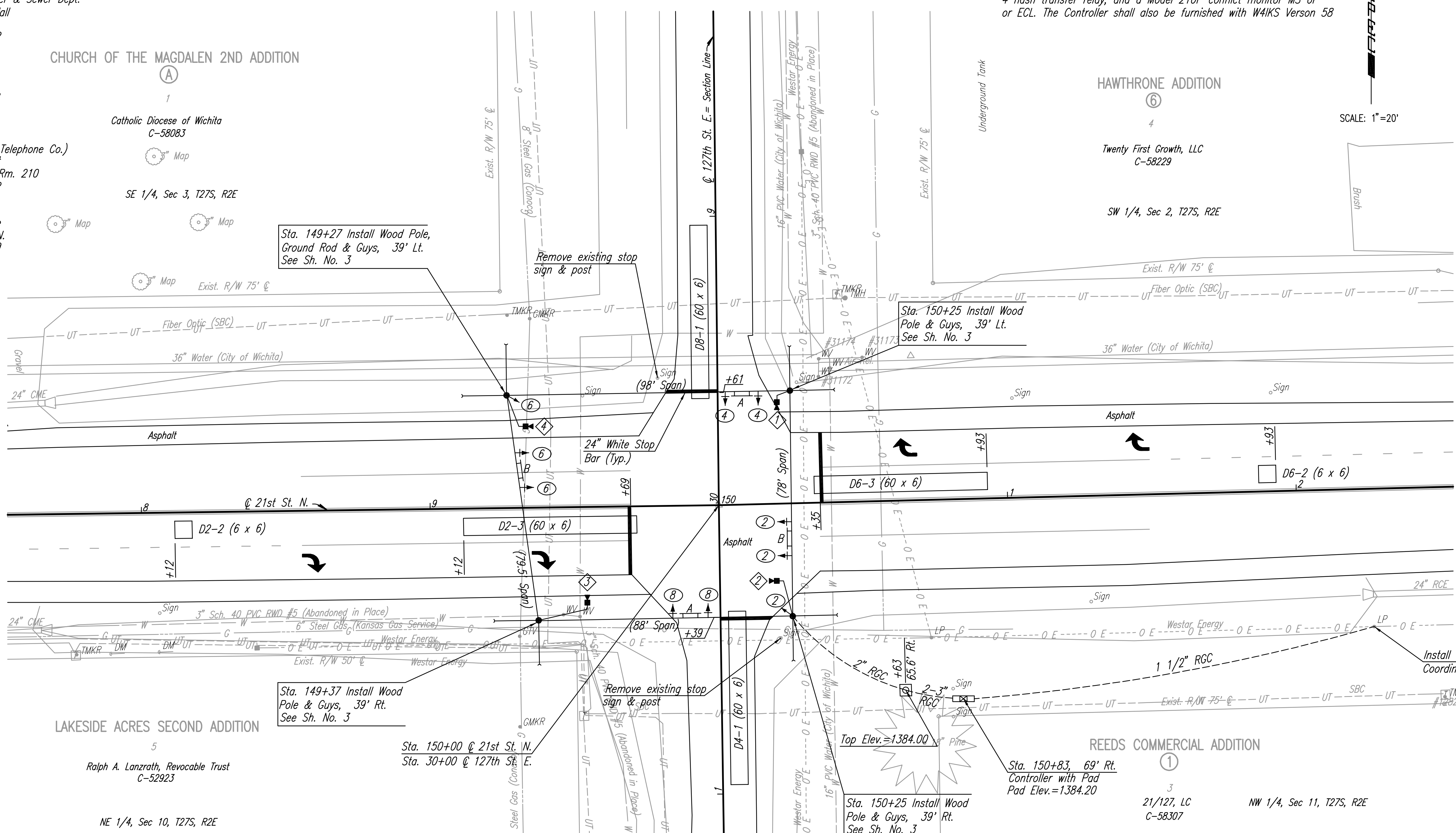
CONTROLLER DESCRIPTION

The Traffic Signal Controller shall comply with the requirements defined in the Specifications for a Type 170E Controller with 412b2 prom module and a 400 modem. It shall be furnished and installed with a Model 332 cabinet, 3-type 242 isolator units, 1 video detection unit, 6 switch packs, 2-type 204 flashers, 4 flash transfer relay, and a Model 210P conflict monitor MS or or ECL. The Controller shall also be furnished with W4IKS Verson 58

LEGEND

- ▼ Traffic Signal Camera
- ◇ Traffic Signal Camera Reference Number
- ← Traffic Signal Head
- ← Traffic Signal Head with Backplate
- ☒ Controller with pad
- D(PHASE)-# Detector Zone
- ▭ Detector Zone
- Conduit
- ② Signal Phase
- △ Signal Pole Reference Number
- T.S. Pole (Wood)
- ┌ Street Name Sign

- Water** Rural Water District #5
P.O. Box 56
Benton, KS 67017
(316) 778-1631
- City of Wichita Water & Sewer Dept.
8th Floor - City Hall
455 N. Main
Wichita, KS 67202
(316) 262-6000
- Power** Westar Energy
P.O. Box 208
Wichita, KS 67201
(316) 383-8600
- Telephone** SBC
(Southwestern Bell Telephone Co.)
Wichita Central Unit
154 N. Broadway, Rm. 210
Wichita, KS 67202
1-800-870-8390
- Pipeline** Kansas Gas Service
1021 E. 26th St. N.
Wichita, KS 67219
(316) 832-3169
- Conoco Phillips
Mike D. Martins
8001 Oak Knoll
Wichita, KS 67207
1-800-231-2551



SCALE: 1"=20'

D2-1 (6 x 6)

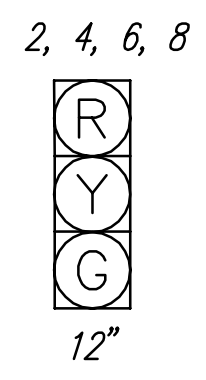
D2-2 (6 x 6)

D2-3 (60 x 6)

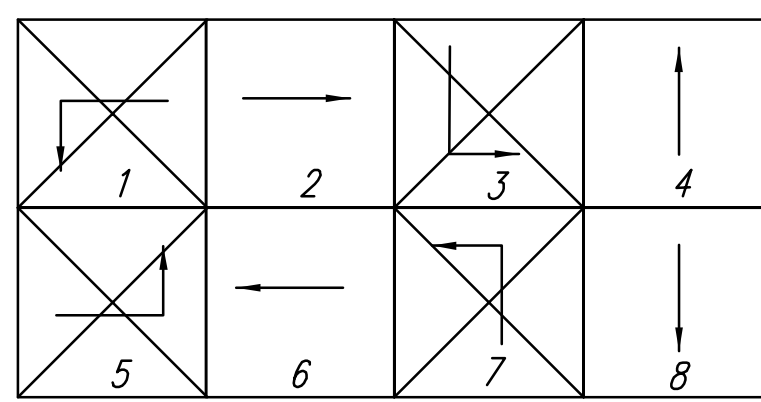
D6-3 (60 x 6)

D6-2 (6 x 6)

D6-1 (6 x 6)



SIGNAL HEAD ARRANGEMENT



PHASE DIAGRAM

	21ST STREET AND 127TH STREET							
	PHASE							
	1	2	3	4	5	6	7	8
MAX. I	-	80	-	40	-	80	-	40
MAX. II/HFDW	-	80	-	40	-	80	-	40
WALK	-	-	-	-	-	-	-	-
FLASH DW	-	-	-	-	-	-	-	-
MAX. INITIAL	-	8.0	-	8.0	-	8.0	-	8.0
MIN. GREEN	-	25.0	-	10.0	-	25.0	-	10.0
T B R	-	-	-	25	-	-	-	25
T T R	-	-	-	15	-	-	-	15
OBSERVE GAP	-	-	-	-	-	-	-	-
PASSAGE	-	1.0	-	1.0	-	1.0	-	1.0
MIN. GAP	-	1.0	-	1.0	-	1.0	-	1.0
ADDED ACTUATION	-	2.0	-	2.0	-	2.0	-	2.0
YELLOW	-	4.0	-	4.0	-	4.0	-	4.0
RED CLEAR	-	2.0	-	2.0	-	2.0	-	2.0
RED REVERT	-	-	-	-	-	-	-	-
WALK II	-	-	-	-	-	-	-	-

The signal shall dwell green in #2 & #6.

DETECTOR SUMMARY							
CAMERA NO.	DETECTION ZONE	MODE	SIZE (LxW)	PHASE CALLED	PHASE EXTENDED	DELAY/STRETCH TIMER	INITIAL SETTING (SEC.)
1	D4-1	PRESENCE	60x6	4	4	-	-
2	D2-1	PULSE	6x6	2	2	S	1
2	D2-2	PULSE	6x6	2	2	S	1
2	D2-3	PRESENCE	60x6	2	2	-	-
3	D8-1	PRESENCE	60x6	8	8	-	-
4	D6-1	PULSE	6x6	6	6	S	1
4	D6-2	PULSE	6x6	6	6	S	1
4	D6-3	PRESENCE	60x6	6	6	-	-

FUNCTION	FUNCTION TABLE							
	PHASE							
	1	2	3	4	5	6	7	8
VEHICLE RECALL	-	X	-	-	-	X	-	-
PED RECALL	-	-	-	-	-	-	X	-
RED LOCK	-	-	-	-	-	-	-	-
YELLOW LOCK	-	-	-	X	-	-	-	X
PERMIT	-	X	-	X	-	X	-	X
PED PHASES	-	X	-	-	-	-	X	-
LEAD PHASES	X	-	X	-	X	-	X	-
DOUBLE ENTRY	-	X	-	-	-	X	-	-
SEQUENTIAL TIMING	-	-	-	-	-	-	-	-
START-UP YELLOW	-	-	-	X	-	-	-	X
OVERLAP A	-	-	-	-	-	-	-	-
OVERLAP B	-	-	-	-	-	-	-	-
OVERLAP C	-	-	-	-	-	-	-	-
OVERLAP D	-	-	-	-	-	-	-	-
EXCLUSIVE	-	-	-	-	-	-	-	-
SIMULTANEOUS GAP	-	-	-	-	-	-	-	-

- Utilities**
- Gas Kansas Gas Service
 - Conoco
 - Water Butler Co. Rural Water District #5
 - City of Wichita
 - Power Westar Energy
 - Telephone SBC

21ST STREET NORTH AND 127TH STREET EAST

TRAFFIC SIGNAL PLAN

Professional Engineering Consultants, P.A.
303 S. TOPEKA • WICHITA, KANSAS 67202
316-262-2691 • FAX 316-262-3003

DSNR: BER OPER: SDM SCALE: 1"=20.00
 Q: V2004 04286 \TraSignalPlan21st 08-31-2004 10:55:39 am