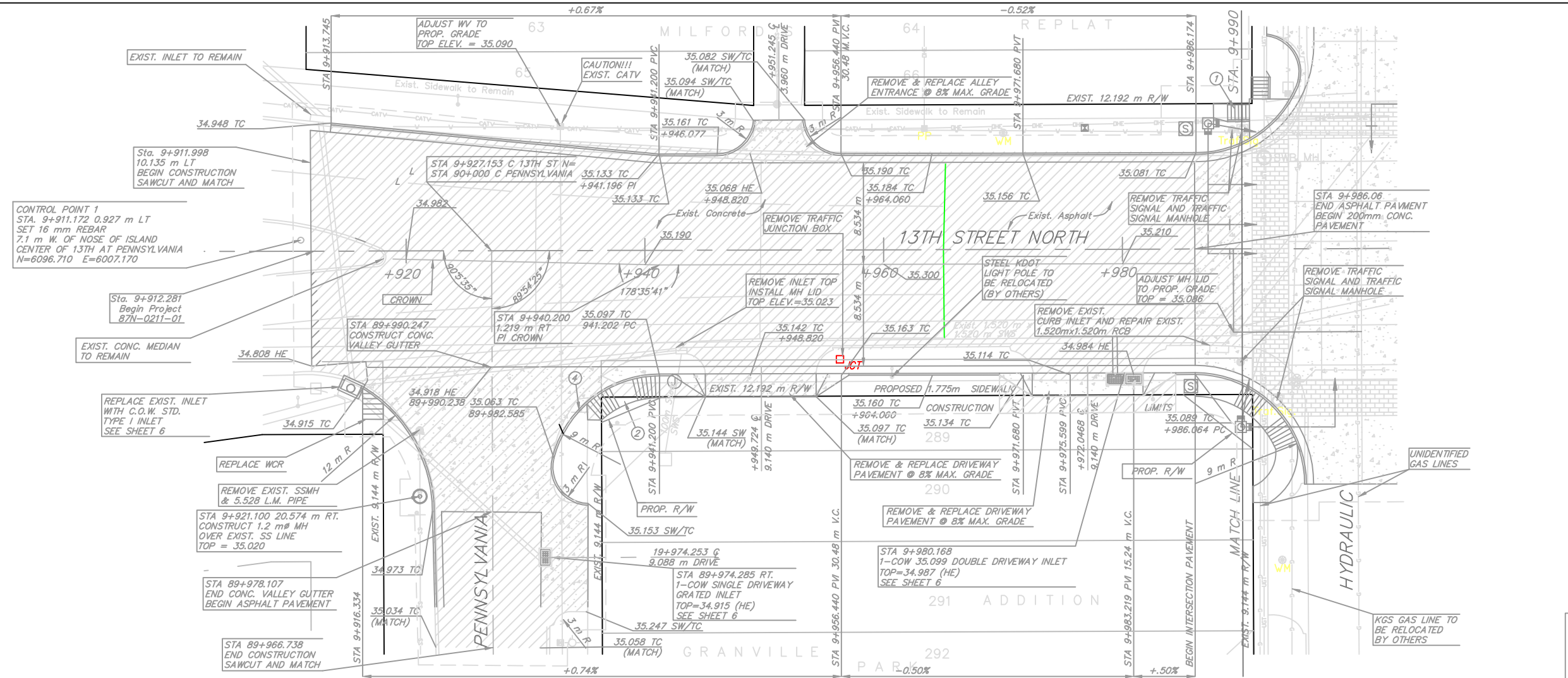


FHWA REG. NO.	STATE	PROJECT NO.	YEAR	SHEET NUMBER	TOTAL SHEETS
7	KANSAS	87N-0211-01	2001	3	44



STA 10+000 CL 13TH=  
STA 30+000 CL HYDRAULIC  
1/4 SEC CORNER

PK NAIL BY NE COR. SIDEWALK  
AT NE COR. GAS STATION  
45.295 m SW

"+" CUT TC BY NW CORNER DENTIST  
OFFICE SW COR. 13TH AND HYDRAULIC  
26.825 m SE

SW COR. BLDG AT NE COR.  
13TH AND HYDRAULIC  
33.385 m NE

N=6096.00 E=6096.00

BENCHMARK  
COW BENCHMARK WICHITA DRAINAGE CANAL  
AND 13TH ST. N. NW CORNER SOUTH BRIDGE.  
ELEV.=36.887



- |  |              |  |                     |  |                         |
|--|--------------|--|---------------------|--|-------------------------|
|  | Sprinkler    |  | Telephone Pedestal  |  | Pavement Removal        |
|  | Mailbox      |  | Water Meter         |  | Gas Line                |
|  | Lightpole    |  | Water Valve         |  | Existing Water Line     |
|  | Gas valve    |  | Manhole             |  | Proposed Water Line     |
|  | Gas meter    |  | Street Sign         |  | Overhead Electric       |
|  | Fire Hydrant |  | Pylon Sign          |  | Proposed SWS            |
|  | Power Pole   |  | Tree                |  | Existing SWS            |
|  | Dead Man     |  | WCR-Wheelchair Ramp |  | Underground Electric    |
|  |              |  |                     |  | Underground Cable TV    |
|  |              |  |                     |  | Underground Telephone   |
|  |              |  |                     |  | Existing Sanitary Sewer |
|  |              |  |                     |  | Prop. Conc. Pavement    |
|  |              |  |                     |  | Prop. Brick Crosswalk   |
|  |              |  |                     |  | Construction Limits     |

- \*Pipes may be abandoned in place. Both ends of pipes shall be plugged with brick masonry per C.O.W. specifications. Pipes abandoned in place having diameters greater than 300mm shall be filled per C.O.W. specifications and plugged. Shall be subsidiary to removal of existing structures.
- 1) Install Standard C.O.W. wheelchair ramp
  - 2) Install wheelchair ramp. See detail sheet 13
  - 3) Relocate Power Pole (by others)
  - 4) Remove & Replace sign