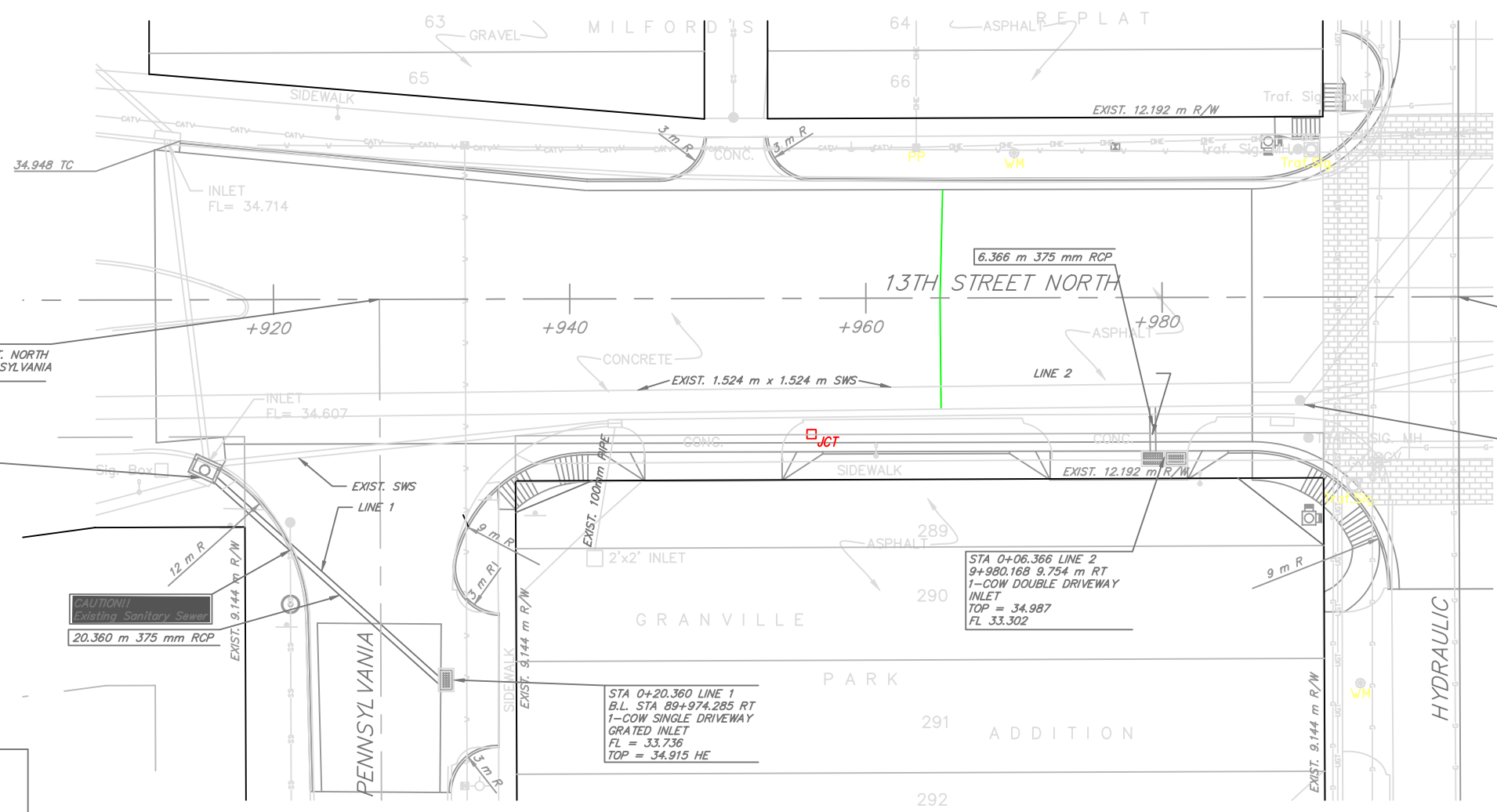


FHWA REG. NO.	STATE	PROJECT NO.	YEAR	SHEET NUMBER	TOTAL SHEETS
7	KANSAS	87N-0211-01	2000	6	44

CONTROL POINT 1  
 STA. 9+911.172 0.927 m LT  
 SET 16 mm REBAR  
 7.1 m W. OF NOSE OF ISLAND  
 CENTER OF 13TH AT PENNSYLVANIA  
 N=6096.710 E=6007.170



B.L. STA. +927.153 13TH ST. NORTH  
 B.L. STA. 90+000.000 PENNSYLVANIA

B.L. STA. 10+000.000 13TH ST. NORTH  
 B.L. STA. 30+000.000 HYDRAULIC

STA 0+00 LINE 1  
 STA 9+915.500 11.131 m RT.  
 REPLACE EXIST. INLET WITH  
 C.O.W. STD. TYPE I INLET  
 TOP = 34.915  
 FL = 33.659 m

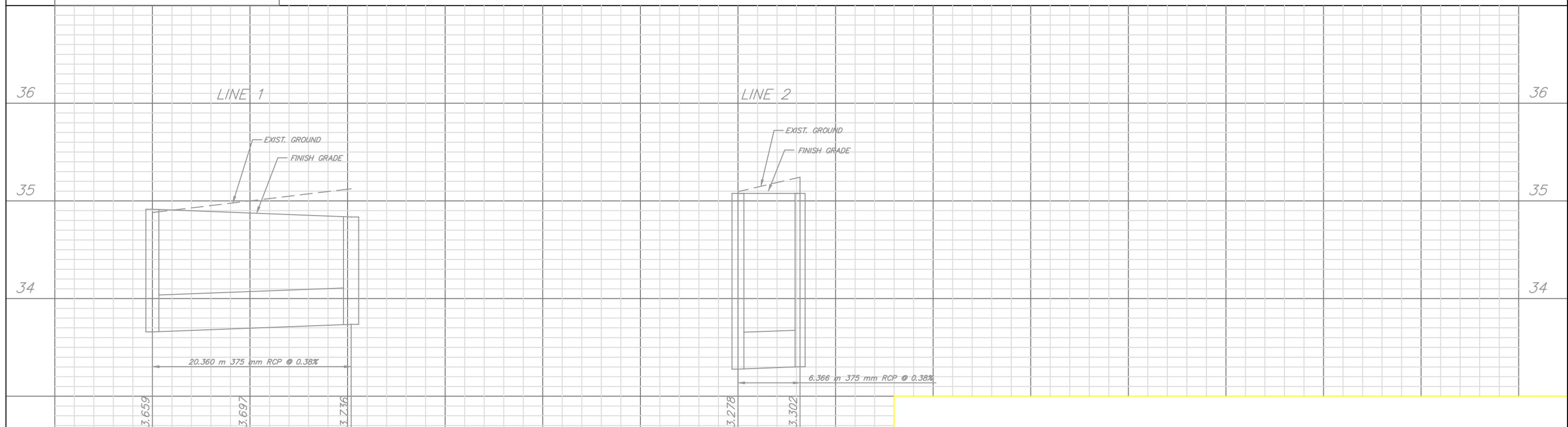
STA 0+00 LINE 2  
 STA 9+989.300 6.973 m RT.  
 CONNECT TO EXIST. MH  
 TOP = 35.086 (PROP.)  
 FL = 33.278 m

CAUTION!  
 Existing Sanitary Sewer  
 20.360 m 375 mm RCP

STA 0+06.366 LINE 2  
 9+980.168 9.754 m RT  
 1-COW DOUBLE DRIVEWAY  
 INLET  
 TOP = 34.987  
 FL 33.302

STA 0+20.360 LINE 1  
 B.L. STA 89+974.285 RT  
 1-COW SINGLE DRIVEWAY  
 GRATED INLET  
 FL = 33.736  
 TOP = 34.915 HE

BENCHMARK  
 COW BENCHMARK WICHITA DRAINAGE CANAL  
 AND 13TH ST. N. NW CORNER SOUTH BRIDGE.  
 ELEV.=36.887



	PROJECT NUMBER <b>472-83167</b>	AM. NO. 59294	<b>13TH AND HYDRAULIC          STORM SEWER</b> CITY OF WICHITA	SHEET OF
	DESIGN RR	DRAWN MP		FILE SWSPP1
SCALE 1:200		REVISION 12/19/00		