

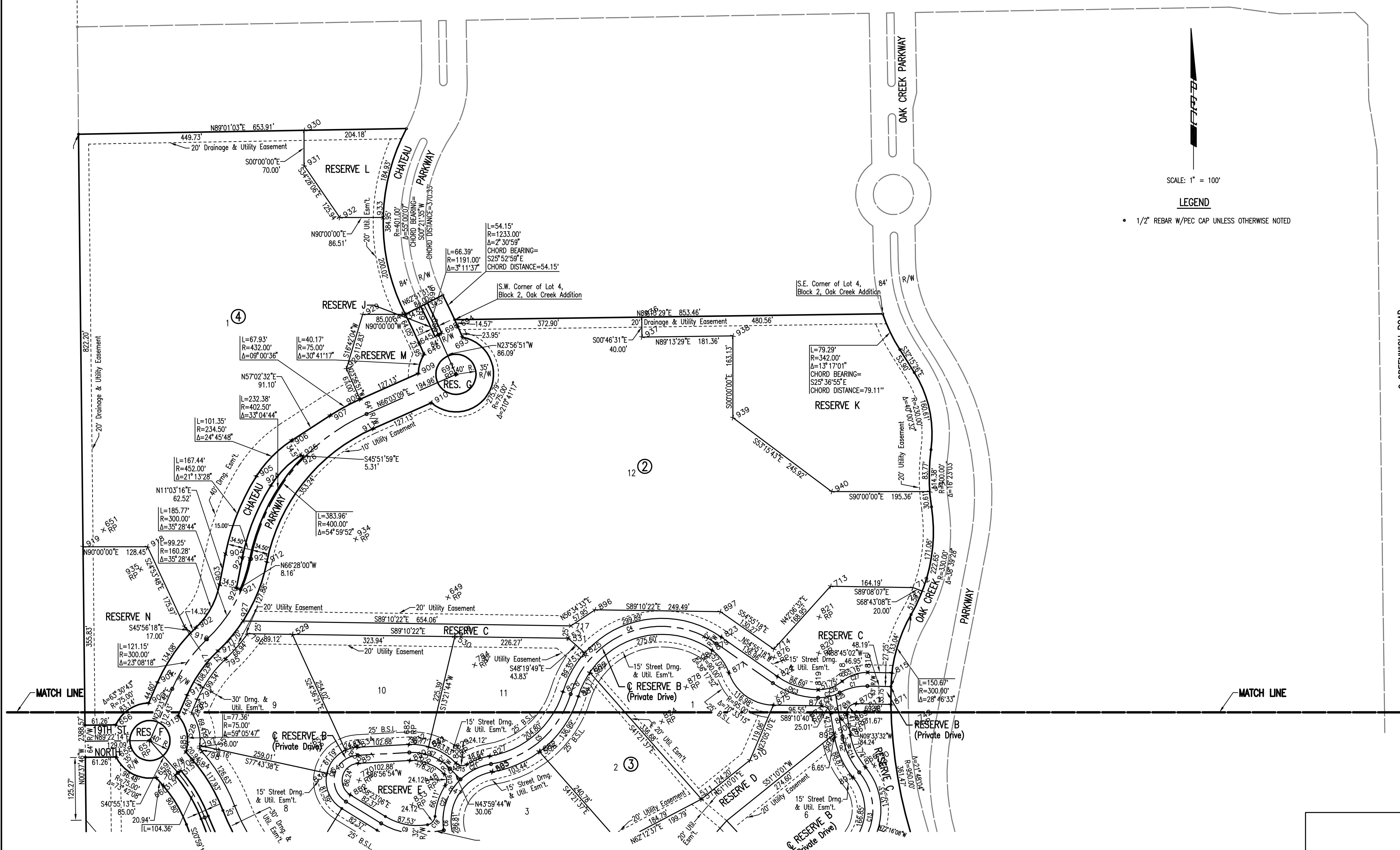
OAK CREEK 2ND

AN ADDITION TO WICHITA, SEDGWICK COUNTY, KANSAS

21ST STREET NORTH

N.W. Cor. NE1/4
Sec. 9, T27S, R2E
Found #5 Bar w/ MKEC Cap

N.E. Cor. Sec. 9
T27S, R2E
Found Chiseled "4"
In Concrete



COORDINATE LIST		COORDINATE LIST			
POINT	NORTH	EAST	POINT	NORTH	EAST
107	384637.858800	2374056.388855	677	385311.735106	2373041.305880
108	384588.657000	2371463.142000	678	385361.125676	2372858.873205
113	386547.779420	2373074.354833	679	385259.887267	2373018.472028
114	386348.421542	2373137.393217	680	385166.945590	2372300.344478
116	386502.200164	2373103.121146	681	385303.397073	2372114.146897
119	386234.430334	2373137.393217	682	385772.507303	2372098.237936
121	386019.773012	2373096.847274	683	385629.238160	2371724.775819
123	385876.199490	2373056.660103	684	385729.865158	2371664.422613
125	385521.987165	2373116.896110	685	385745.686022	2371650.708370
126	385455.247940	2373147.211183	691	386443.981395	2372137.886616
127	385423.915499	2373140.575936	692	386498.559747	2372189.327878
128	385354.616204	2373188.097969	693	386572.395609	2372202.490916
129	385349.641854	2373221.568572	694	386594.284605	2372192.769274
148	385170.305777	23733631.645838	695	386603.808227	2371065.909746
149	385173.349815	2373389.377053	696	386640.548715	2372132.435455
150	385165.749614	2373889.317726	697	386633.705906	2372119.087199
151	385167.888300	2374049.303432	698	386580.281008	2372161.239141
170	385799.127471	2371449.841656	699	386574.192488	2372147.530388
171	385735.131334	2371450.544829	700	385709.232417	2371640.620513
184	386656.287177	2372163.136446	701	385699.407302	2371629.286179
195	386988.294512	2372090.710556	702	385612.583122	2371681.360848
196	386977.082987	2371436.898577	703	385617.955715	2371695.365677
207	386800.898554	2372445.229604	704	385527.159864	2371714.131286
218	386619.116678	2373040.152258	705	385436.352321	2371809.401789
230	386607.569274	2372186.774853	706	385445.226658	2371817.026931
248	386730.311638	2373363.570997	707	385307.625555	2373068.752571
256	386379.444579	2372908.619048	708	385301.395476	2373082.397575
258	386294.468436	2373532.861833	709	385364.294601	2373138.529982
259	386184.898989	2372811.131609	710	385377.145641	2373130.793653
260	385869.658669	2373356.588788	711	386066.271337	2373119.072352
261	385855.486575	2374006.434273	712	386073.530227	2373100.435979
292	385712.257355	2373624.401041	713	386076.007974	2372936.261592
319	385167.353628	2374009.307006	714	385950.666563	2372822.971379
320	385147.355415	2374009.574341	717	385997.209479	2372418.536104
321	385127.624537	2374029.839890	723	384625.361974	2373397.726869
322	385127.891873	2374049.838103	724	385225.335776	2373386.343536
323	384972.905721	2374051.909955	730	385719.393632	2373023.113563
324	384969.844727	2373822.930414	742	385802.066425	2373107.922513
325	385172.826591	2373820.216956	746	385630.902853	2372905.615737
510	385729.493476	2372775.401960	751	384869.389928	2373412.885946
511	385651.610748	2372678.649760	754	385467.909995	2372610.114442
512	385558.463247	2372501.903495	759	385369.781623	2372262.237062
513	385565.456682	2372515.173455	762	385608.765666	2372277.949391
514	385473.277134	2372609.116212	770	385689.269256	2371996.338075
515	385608.869336	2372729.212367	784	385919.036661	2372226.547447
517	385577.758570	2373071.826251	792	385758.355848	2371678.756964
518	385453.483247	2373119.896372	793	385824.353380	2371662.258003
519	385438.232780	2373116.535439	794	385950.290258	2371673.479139
529	385980.225999	2371863.091242	795	385931.152424	2371730.023896
530	385975.549640	2372186.998321	796	385981.512525	2371773.980052
531	385972.283255	2372133.245445	797	385752.408123	2371677.966653
543	385466.045715	2373113.647844	798	385746.240350	2371883.313169
560	385424.734166	2371900.617478	799	385638.192488	2371748.117201
643	385374.307061	2371871.962512	800	385477.411103	2371866.843829
644	386617.967444	2372088.386208	801	385446.469987	2371912.968757
645	386560.188891	2372116.000255	802	385373.263775	2372041.797292
646	386538.299894	2372125.721898	803	385325.132894	2372126.498175
649	386053.856680	2372173.507174	804	385281.325235	2372196.814341
651	386188.076356	2371486.495472	805	385185.270124	2372317.350696
652	385991.391651	2371672.925423	806	385173.247341	2372330.843746
653	385752.612064	2371899.255512	807	385068.496375	2372575.343293
656	385799.800557	2371511.099531	808	385124.860751	2372841.874950
657	385768.547750	2371579.277695	809	385273.278591	2372997.361073
658	385735.804420	2371511.802704	811	385318.268250	2373017.174313
659	385694.595424	2371591.769836	812	385428.121431	2373100.106214
660	385678.774561	2371605.484079	813	385513.210865	2373093.487211
661	385507.817561	2371408.266675	815	385903.415972	2373058.494109
662	385601.300677	2371651.950706	816	385904.466559	2373010.320322
663	385515.877419	2371684.721144	817	385827.484863	2373008.641486
664	385582.139398	2371857.447373	818	385886.645633	2372959.356567
665	385406.435103	2371799.542272	819	385869.740633	2372911.584405
666	385026.533924	2371674.342055	820	385942.733117	2372912.631903
667	385252.969968	2372085.491931	821	386014.725704	2372913.665051
668	384433.964231	2371620.095753	822	385996.062673	2372830.333874
669	385124.432671	2372260.890052	823	385974.772277	2372185.251933
670	385512.179810	2372630.741627	824	385906.188937	2372599.864191
671	385001.098644	2373048.608580	825	385943.145088	2372445.984326
672	385305.719477	2373124.672307	826	385865.795684	2372402.676372
673	385242.209727	2373212.025107	827	385737.510864	2372256.620445
674	385334.737211	2373156.323538	828	385720.906491	2372211.205962
675	385406.703032	2373113.000096	829	385736.374191	2372201.999972
676	385270.053646	2373195.263061			

SCALE: 1" = 100'

LEGEND

• 1/2" REBAR W/PEC CAP UNLESS OTHERWISE NOTED

Scaled 11-06-2006 11:25:54 AM by REJ
 Plot Scale 1:100 11-07-2006 11:56:15 AM by REJ
 J:\SENT\01\2005\09\03\031\003\2006-11-07 to City DM\03-OakCreek2nd-North

No.	Revision	By	Date
OAK CREEK 2ND - PHASE 2			
OAK CREEK 2ND (NORTH)			
JAMES L. ARMOUR, P.E. - CITY ENGINEER CITY OF WICHITA PROJECT NO. 472-84449			
Professional Engineering Consultants, P.A.			
303 S. TOPKA • WICHITA, KANSAS 67202 316-262-2691 • FAX 316-262-3003			
Designed by	BDB, BMM	Job No.	35-05731-003
Drawn by	BJS, TAT	Date	February 2006
			Sheet 3 of 84

