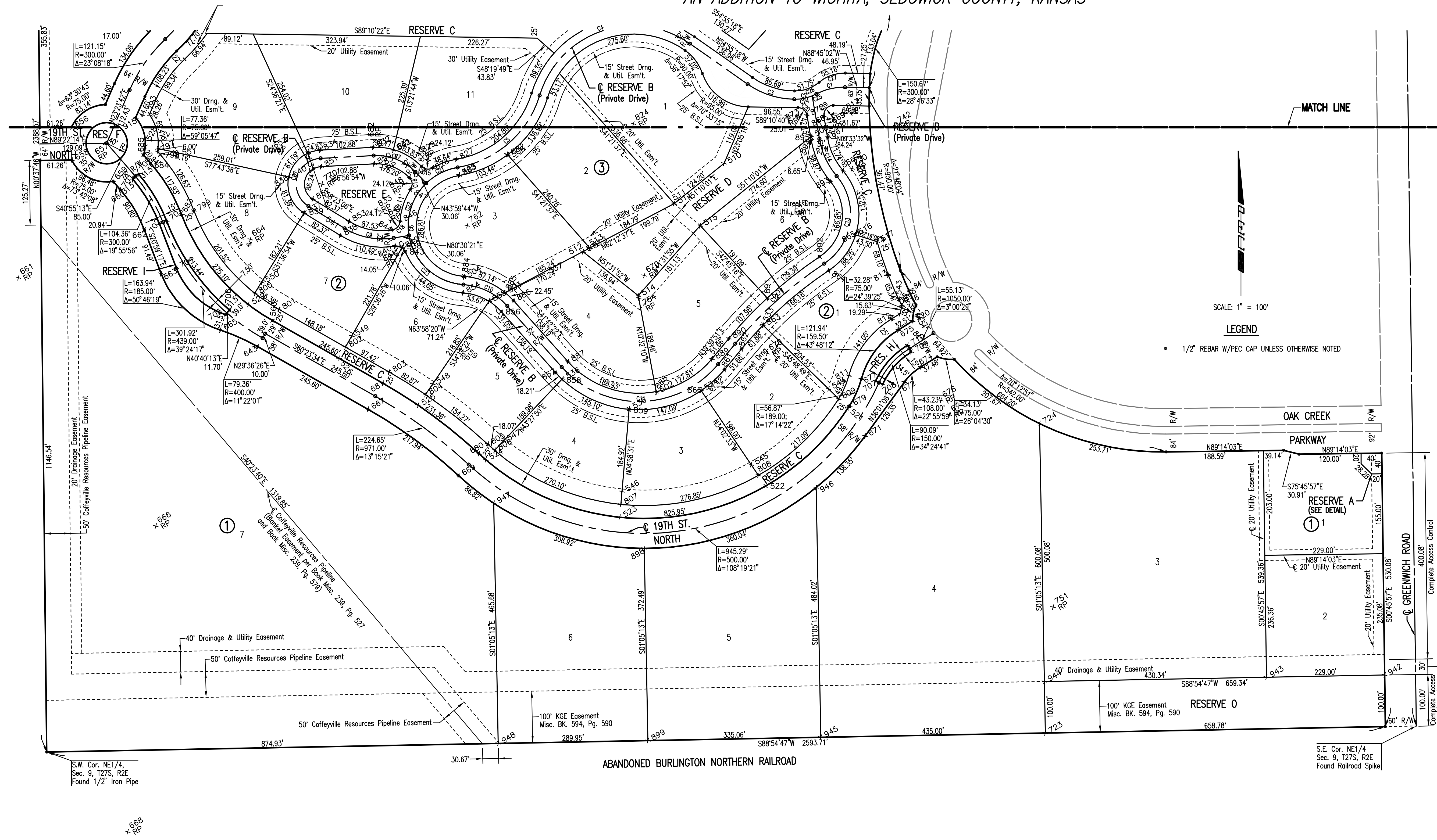


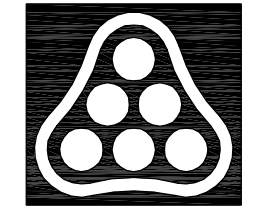
OAK CREEK 2ND

AN ADDITION TO WICHITA, SEDGWICK COUNTY, KANSAS



COORDINATE LIST			COORDINATE LIST		
POINT	NORTH	EAST	POINT	NORTH	EAST
830	385723.871316	2372189.050914	917	385995.317854	2371648.466956
831	385756.263813	2372134.910683	918	386154.935582	2371574.385694
832	385760.652639	2372095.563129	919	386154.935582	2371445.932126
833	385639.824211	2372102.004466	920	386072.549300	2371751.766057
834	385755.175672	2371992.824618	921	386069.289312	2371759.251568
835	385749.275995	2371968.857330	922	386133.909130	2371763.753766
836	385703.298789	2371931.846426	923	386131.032994	2371778.474455
837	385633.064326	2371961.740302	924	386276.819780	2371820.528837
838	385589.866730	2372031.883366	925	386337.825701	2371880.816476
839	385721.031566	2372112.611502	926	386334.130520	2371884.625149
840	385569.140971	2372138.013215	927	386006.651413	2371764.540414
841	385551.387525	2372140.982246	928	386509.901209	2371970.962395
842	385566.088399	2372151.368982	929	386617.967444	2372003.386208
843	385558.342451	2372157.584324	930	386984.793816	2371886.563740
844	385600.702653	2372132.734937	931	386914.793816	2371886.563740
845	385618.456099	2372129.765906	932	386810.961397	2371957.841286
846	385617.281501	2372147.727540	933	386810.961397	2372044.355884
847	385679.398630	2372168.216833	934	386170.011109	2371989.620256
848	385689.141107	2372153.081307	935	386109.897201	2371560.598519
849	385701.645982	2372166.030366	936	386612.614677	2372559.640718
850	385728.698914	2372087.266823	937	386572.618338	2372560.181926
851	385723.221048	2371994.528112	938	386575.072168	2372741.525132
852	385660.315201	2371978.514980	939	386411.940565	2372741.525132
853	385617.137605	2372048.658044	940	386264.841210	2372938.599915
854	385478.546804	2372269.387976	941	386264.841210	2373133.960558
855	385462.248103	2372319.951446	942	384737.851437	2374055.052155
856	385442.300225	2372343.613056	943	384733.507322	2373826.089767
857	385324.203409	2372448.855591	944	384725.343980	2373395.829905
858	385311.135193	2372461.528907	945	384617.110183	2372962.805143
859	385252.723867	2372591.381308	946	385101.046345	2372953.623398
860	385288.927633	2372731.033068	947	385070.846609	2372329.080856
861	385330.044040	2372776.391277	948	384605.254103	2372337.914565
862	385369.805350	2372809.362619			
863	385415.834107	2372850.689489			
864	385521.877505	2372978.241308			
865	385591.008572	2373030.392685			
866	385715.515789	2373005.623992			
867	385779.814140	2372975.783057			
868	385820.975451	2372968.851492			
869	385823.964564	2372986.601568			
870	385841.960285	2372986.994023			
871	385840.443317	2373056.553386			
872	385822.627180	2372936.122776			
873	385819.638067	2372918.372700			
874	385837.636214	2372918.630987			
875	385839.021675	2372822.088274			
876	385834.011894	2372833.451455			
877	385803.673395	2372733.426040			
878	385874.931658	2372648.138804			
879	385948.584574	2372899.861604			
880	385904.314381	2372456.172169			
881	385856.536383	2372433.307490			
882	385746.177609	2372356.086674			
883	385705.941160	2372261.850531			
884	385510.477866	2372271.487327			
885	385479.092860	2372351.299139			
886	385463.590089	2372367.503257			
887	385345.493274	2372472.745791			
888	385287.012201	2372643.759473			
889	385350.465559	2372751.757672			
890	385390.230469	2372784.729014			
891	385468.554345	2372858.938294			
892	385548.509651	2372960.500710			
893	385694.846980	2372981.194495			
894	385774.500162	2372944.227366			
895	385781.060856	2372943.122545			
896	386029.131555	2372466.904021			
897	386025.529991	2372716.366366			
898	384983.179810	2372620.741627			
899	384610.754259	2372627.807675			
900	385843.508177	2371576.841652			
901	385884.437919	2371584.549189			
902	385983.568872	2371670.861623			
903	386079.164413	2371717.806194			
904	386140.524242	2371729.893904			
905	386295.244275	2371791.360567			
906	386366.773718	2371862.047823			
907	386416.336199	2371938.491008			
908	386448.668777	2371998.157786			
909	386500.272526	2372114.347438			
910	386441.781845	2372140.325125			
911	386390.178096	2372024.135473			
912	386124.417881	2371812.335308			
913	385947.119448	2371714.889361			
914	385859.025706	2371653.287756			
915	385818.095864	2371635.580221			
916	385983.495509	2371660.683018			

* 830 = COORDINATE POINT NO.



No.	Revision	By	Date
OAK CREEK 2ND - PHASE 2			
OAK CREEK 2ND (SOUTH)			
JAMES L. ARMOUR, P.E. - CITY ENGINEER CITY OF WICHITA PROJECT NO. 472-84449			
Professional Engineering Consultants, P.A.			
303 S. TOPKA • WICHITA, KANSAS 67202 316-262-2691 • FAX 316-262-3003			
Designed by	BDB, BMM	Job No.	35-05731-003
Drawn by	BJS, TAT	Date	February 2006
			Sheet 4 of 84

Saved: 11-06-2006 11:26:44 AM by REJ
 Plot Scale: 1:100 11-07-2006 11:54:41 AM by REJ
 J:\SENTOUT\2005\05731\003\2006-11-07 to City DWG\04-OakCreek2nd-South