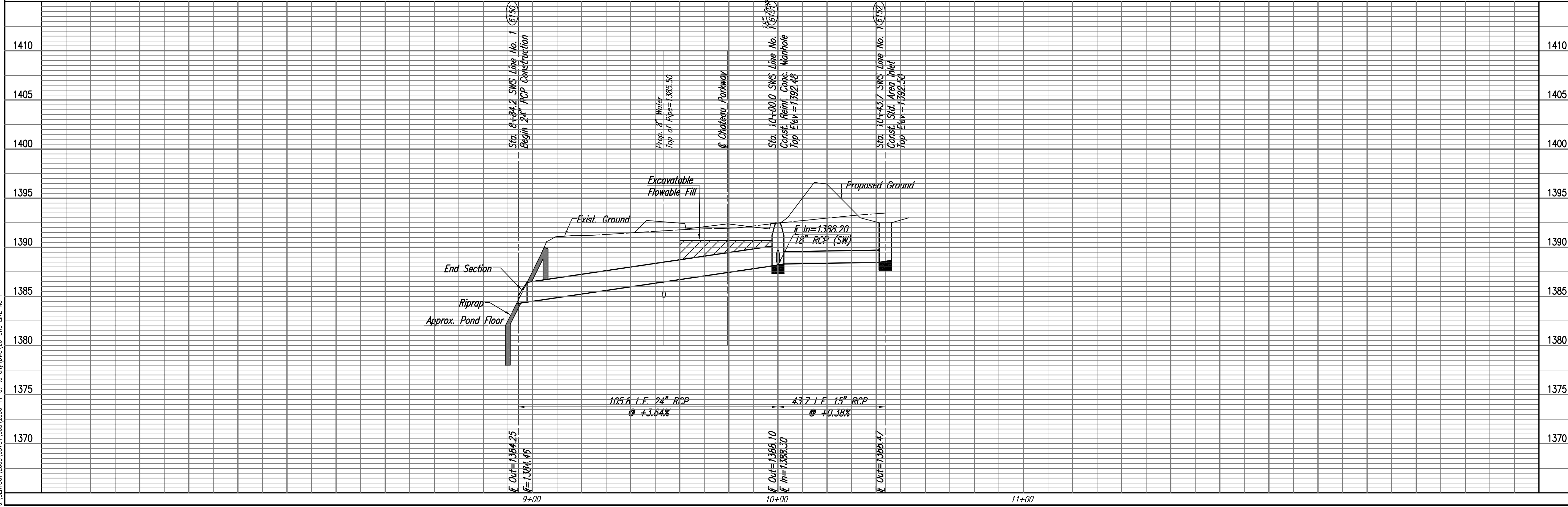


PLAN	CHECKED	CHECKED
BY		
DATE		

PROFILE	CHECKED	CHECKED
BY		
DATE		

Sowed 11-06-2006 4:54:46 PM by BJS
 Plot Scale 1:20 11-07-2006 12:21:04 PM by BEJ
 J:\SENTOU\2005\02731\003\2006-11-07 to CIV\DWG\26-SWS LINE NO 1



Install 18 S.Y. Light Stone Riprap See Sheet No. 36.

Sta. 8+94.2 SWS Line No. 1
Begin 24" RCP Construction
Install 105.8 L.F. 24" RCP (SE)
(Including End Section)

CAUTION !!!
Proposed 8" Water
City of Wichita

Install 38 L.F.
Excavatable Flowable
Fill to Elev. 1390.7

Sta. 10+00.0 SWS Line No. 1=
Sta. 15+00.0 SWS Line No. 1A=
@ Chateau Parkway Sta. 10+88.85, 20.43' Lt.
Const. Reinforced Conc. Manhole
Dia.=4'-0"
Install 43.7 L.F. 15" RCP (ESE)
Install 97.0 L.F. 18" RCP (SW)
Top Elev.=1392.48
See Sheet No. 33.

Sta. 10+43.7 SWS Line No. 1
Const. Std. Area Inlet
L=5'-4", W=3'-10"
Top Elev.=1392.50
See Sheet No. 32.

COORDINATE LIST		
POINT	NORTH	EAST
6150	385,885.8938	2,371,537.0627
6151	385,841.4899	2,371,633.0936
6152	385,833.5109	2,371,676.0260

(6150) = COORDINATE POINT NO.
 SEE SHEET NOS. 3 & 4 FOR PLAT COORDINATES

