

GENERAL NOTES

Unless shown or stated otherwise on these drawings, materials and construction shall be in accordance with city of wichita standard specifications.

The Contractor shall be responsible for preserving existing property irons shown on plans. The Contractor will be required to reestablish any shown property irons which are damaged or destroyed by his construction operations. Such irons shall be reestablished at the Contractor's expense by a licensed land surveyor in accordance with state laws.

The City of Wichita Public Works Dept. shall take field ties to all quarter section corners. The contractor shall set a city survey monument in the required location where such quarter section corners fall within the limits of pavement construction. Survey monuments will be furnished at no cost by the city. The City of Wichita Public Works Dept. will accurately locate and install the iron at the quarter section corner. This work shall be paid for under the contract unit price for Survey Monument.

All construction staking shall be performed by the City of Wichita Public Works Department at no cost to the contractor. The contractor shall coordinate the survey staking with the City of Wichita Public Works Department and give the surveyor 24 hours notice when stakes are required.

Utility service lines, poles, valve boxes, meters, etc... are to be adjusted as necessary by others prior to construction unless the plans specifically call for their adjustment by the contractor. Existing utilities and their location, as shown on the plans, represent the best information obtainable for design. Location information has been obtained from the various utility companies and is either from company record drawings or company provided field locations. The plan locations shown are not guaranteed. Additional existing utilities may also be encountered. The contractor will be required to work around existing utilities within the right-of-way which do not conflict with proposed construction.

The contractor shall adjust or remove and replace water valve boxes as directed by the engineer at the price bid for said adjustments. Water valve boxes on water lines to be abandoned, shall be removed, and the valve abandoned in place. The water department shall field locate water valves one time during construction when requested by the contractor. It shall be the contractors responsibility to preserve such field locations during the the construction process. Water valves or water valve boxes damaged during construction shall be repaired by the contractor at his own expense.

All stationing, radii, pavement widths, offset distances, etc... are measured to the back of the curb and gutter and along the project baseline unless otherwise noted on the plans. Spot elevations on Intersection Details sheets are to high edge and top of curb unless otherwise noted.

A full depth saw cut of the existing surface shall be provided at locations where proposed new construction abuts an existing concrete or bituminous surface for which at least partial removal of that surface is required. Saw cuts shall not be paid for directly, but shall be considered Subsidiary to various surfacing items involved.

Rubble from the removal of miscellaneous structures and excess excavation which is to be wasted shall be disposed of on sites to be provided by the contractor. These sites shall be approved by the Engineer as to suitability, appearance and site location. Locations that, in the opinion of the Engineer, will leave an unsightly appearance will not be approved. All disposal sites must be approved by the Kansas Department of Health and Environment. Material either stockpiled or disposed of in a flood plain would require a Kansas State Board of Agriculture permit. Any material dumped in waters of the United States or wetlands is subject to U.S. Corps of Engineers permitting regulations. Any material buried or stockpiled beyond approved construction limits would require additional archeological investigations unless buried in a previously approved borrow location.

All trees to be removed are marked with a tree symbol. Costs shall be paid as site clearing and restoration. Trees may be relocated by City prior to construction.

All trees, hedge rows, shelter belts, and woody shrubs not shown to be removed and located between the right-of-way line or easement line shall be spared unless directed by the engineer to be removed. All trees within the appropriate clear zone shall be removed.

All private signs, posts and landscaping features in conflict with the new construction will be relocated by others prior to construction. Upon the start of construction, all items that remain within the construction limits shall be removed and disposed of by the contractor.

Select Soil (Topsoil shall be placed at a minimum depth of 6 inches or as specified at all locations within the right-of-way outside of pavement. The finished grade indicates the surface elevation after the prescribed select soil (topsoil) thickness has been placed. Additional select soil for medians shall be brought in from an acceptable source.

All gravel or other similar debris larger than 1/2 inch in diameter shall be raked up and removed during final grade preparation.

Where offsite select soil is needed, it shall be fertile natural topsoil, typical of the locality, obtained from well drained areas. Stockpiled topsoil may be used. It shall be without admixture of subsoil or slag and shall be free of stones, lumps, sticks, plants, or their roots, toxic substances or other extraneous matter that may be harmful to plant growth or would interfere with future maintenance. Topsoil ph range shall be 5.5 to 7.0. Topsoil shall be approved by the Landscape Architect prior to placement.

New storm sewer installed under proposed pavements shall be protected from construction traffic during construction operations.

Proposed curbs matching existing curbs shall be altered to match the shape and dimensions of the existing curb. Positive drainage shall be maintained through such transitions.

Pavement cross-slope transitions will be required where proposed pavement matches existing pavement and Mill & Overlay sections. Transitions shall be made over an adequate length to prevent sumps from being created in gutters.

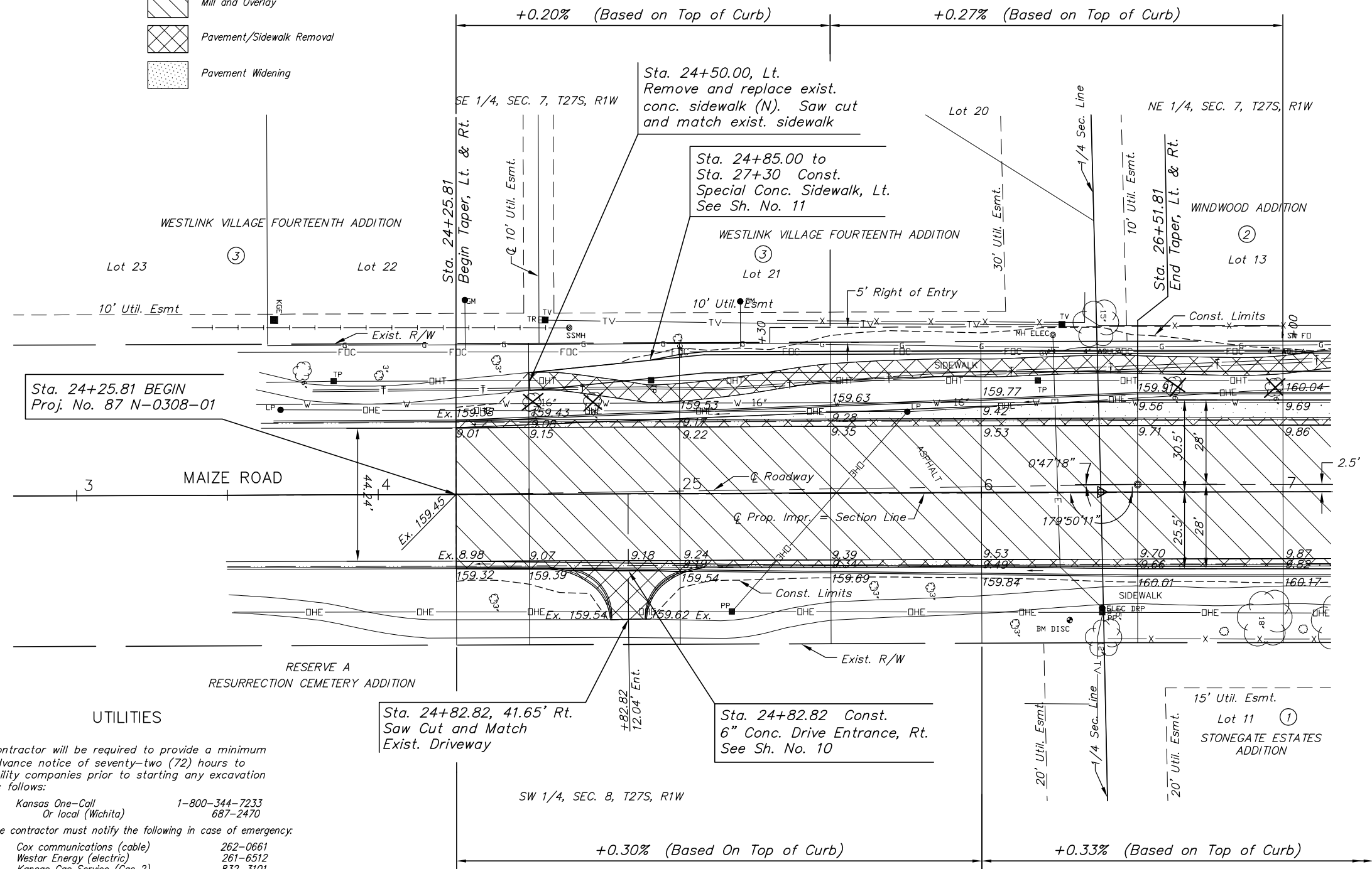
P.I. Sta. 0+00.00 = SW 1/4 Cor., Sec. 8, T27S, R1W
 1. Found 3/4" bar in thimble (survey monument box)
 2. N 1693474.30, E 1612604.97

P.I. Sta. 26+39.58 = W 1/4 Cor., Sec. 8, T27S, R1W
 1. Found 1/2" pipe in thimble (survey monument box)
 2. N 1696113.68, E 1612572.32

STATE	PROJECT NO.	YEAR	SHEET NO.	TOTAL SHEETS
KANSAS	87 N-0308-01	2005	3	37

LEGEND

-  Mill and Overlay
-  Pavement/Sidewalk Removal
-  Pavement Widening



Contractor will be required to provide a minimum advance notice of seventy-two (72) hours to utility companies prior to starting any excavation as follows:

- | | |
|--|----------------|
| Kansas One-Call | 1-800-344-7233 |
| Or local (Wichita) | 687-2470 |
| The contractor must notify the following in case of emergency: | |
| Cox communications (cable) | 262-0661 |
| Westar Energy (electric) | 261-6512 |
| Kansas Gas Service (Gas 2) | 832-3101 |
| SBC (telephone) | 800-870-8390 |
| City of Wichita water & sewer | 262-6000 |
| Aquila (Gas 1) | 946-0096 |

PROJECT SURVEY CONTROL

Datum Bench Mark: City of Wichita benchmark disc 10' South and 42' East of the West Quarter Corner of Sec. 8, T27S, R1W. Elev. 161.05

USGS Elevation = 161.05 + 1187.4 = 1348.45 NGVD29

ELEVATIONS: Elevations are in City of Wichita Datum (feet).

BM#1 C.O.W. Benchmark Disc.
 Sta. 26+29.13, 42.44' Rt. Elev. 161.05

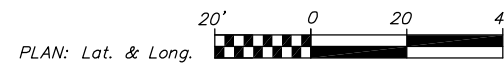
Southwest Corner Section 08, Township 27 South, Range 1 West
 Sta. 0+00.00, 0.00' Rt.

- 3/4" bar in thimble (survey monument box)
- Chiseled "X" on top of curb 53.28' NE
- Chiseled "X" on top of curb 50.68' SE
- Chiseled "X" on top of curb 52.73' NW
- PK nail in southeast face of power pole 95.48' SW
- N = 1693474.30 E = 1612604.97 6.

West Quarter Corner Section 08, Township 27 South, Range 1 West
 Sta. 26+39.58, 0.00' Lt.

- 1/2" pipe in thimble (survey monument box) 43.70' ESE
- Center of City of Wichita benchmark disc 47.92' East
- Southwest corner of concrete pillar of Concrete wall 41.39' NE
- Chiseled "X" on top of curb 55.09' WNW
- Southeast corner of concrete pillar of concrete wall 55.09' WNW
- N = 1696113.68 E = 1612572.32

SCALE



J:\Civil\03431\dwg\pav\03431PL1.DWG 6/22/2004 11:07:53 AM CST

KANSAS DEPARTMENT OF TRANSPORTATION

MAIZE ROAD IMPROVEMENT
 STA.24+25.81 TO 27+00.00

PROJECT NO. 87 N-0308-01 SEDGWICK CO.

M K E C ENGINEERING CONSULTANT, INC.
 WICHITA, KANSAS

DESIGNED BY: JRA	CHECKED BY: JRA
DRAWN BY: DPG	DATE: 4-15-04 SHEET 3 OF 37