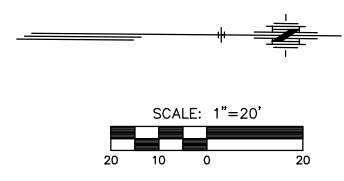
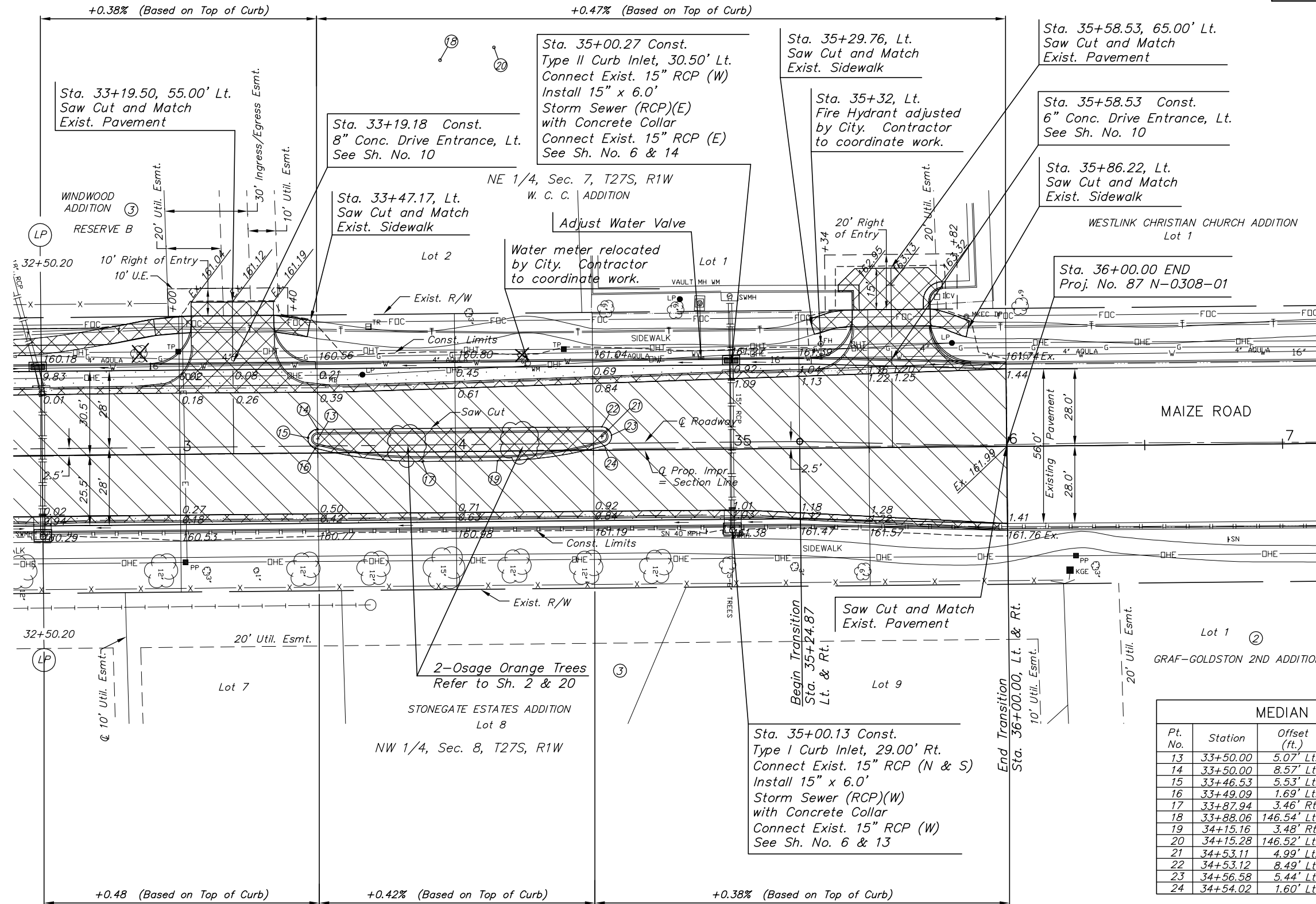


P.I. Sta. 52+71.49 = NW Corner Section 8, T27S, R 1 W  
 1. Found 1/2" pipe in thimble (survey monument box)  
 2. N = 1698745.47 E = 1612547.28

STATE	PROJECT NO.	YEAR	SHEET NO.	TOTAL SHEETS
KANSAS	87 N-0308-01	2005	5	37



MEDIAN LOCATION				
Pt. No.	Station	Offset (ft.)	Elevation	
			High Edge	Top Curb
13	33+50.00	5.07' Lt.	Radius Point	
14	33+50.00	8.57' Lt.	160.72	161.41
15	33+46.53	5.53' Lt.	160.78	161.47
16	33+49.09	1.69' Lt.	160.89	161.58
17	33+87.94	3.46' Rt.	161.04	161.73
18	33+88.06	146.54' Lt.	Radius Point	
19	34+15.16	3.48' Rt.	161.13	161.82
20	34+15.28	146.52' Lt.	Radius Point	
21	34+53.11	4.99' Lt.	Radius Point	
22	34+53.12	8.49' Lt.	161.18	161.87
23	34+56.58	5.44' Lt.	161.25	161.94
24	34+54.02	1.60' Lt.	161.32	162.01

**LEGEND**

	Mill and Overlay
	Pavement/Sidewalk Removal
	Pavement Widening

Northwest Corner Section 08, Township 27 South, Range 1 West  
 Sta. 52+71.49, 0.00' Lt.  
 1. 1/2" pipe in thimble (survey monument box)  
 2. Chiseled "X" on top of curb 98.78' SW  
 3. Chiseled "X" on top of curb 75.94' NW  
 4. Chiseled "X" on top of curb 76.12' NE  
 5. Chiseled "X" on top of curb 90.66' SE  
 6. N = 1698745.47 E = 1612547.28

J:\Civil\03431\dwg\pav\03431PL3.DWG 5/6/2004 4:54:20 PM CST

KANSAS DEPARTMENT OF TRANSPORTATION

**MAIZE ROAD IMPROVEMENTS**  
 STA. 32+50.00 TO STA. 36+00.00

PROJECT NO. 87 N-0308-01 SEDGWICK CO.

**M K E C ENGINEERING CONSULTANT, INC.**  
 WICHITA, KANSAS

DESIGNED BY:	JRA	CHECKED BY:	JRA
DRAWN BY:	DPG	DATE:	4/12/04 SHEET 5 OF 37