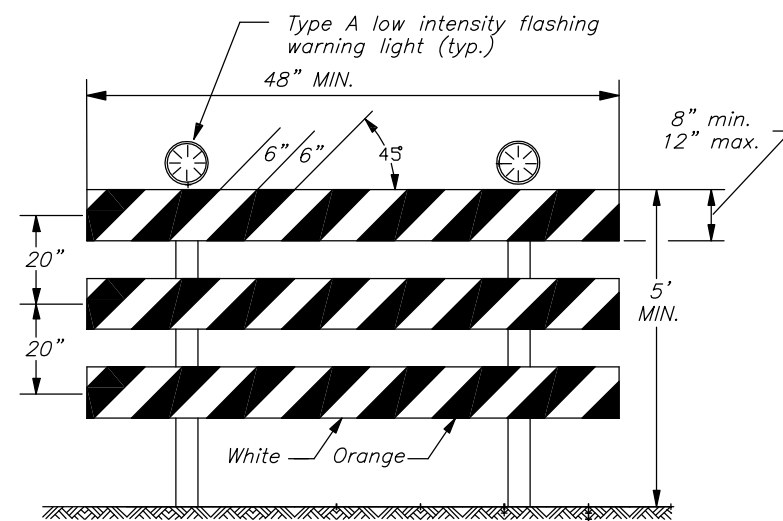


STATE	PROJECT NO.	YEAR	SHEET NO.	SHEETS
KANSAS	87 N-0308-01	2005	26	37

Phase	Handling of Traffic	Major Construction Items	Remarks
I	Close outside south-bound lane. Maintain two lane traffic in north-bound lanes. Refer to Standard TE 744. Close access to Westport from Maize.	Construct widening on the west side of Maize Road and other improvements including, drives, valley gutters, sidewalks and storm sewers.	Access to businesses and homes to be maintained. See detail, this sheet.
II	Close outside north-bound lane. Maintain two-lane traffic in south-bound lanes. Refer to Standard TE 744. Close access to Westport from Maize.	Construct widening on the east side of Maize Road and other improvements including, drives, valley gutters, sidewalks and storm sewers.	Access to businesses and homes to be maintained. See detail, this sheet.
III	Close north-bound and south-bound inside lanes. Refer to Standard TE 744.	Construct median islands and all landscape improvements within island.	
IV	Traffic control shall be in accordance with Standard TE 744.	Construct mill and overlay on existing pavement.	Construction to occur one lane at a time.



TYPE III BARRICADE WITH LIGHTS

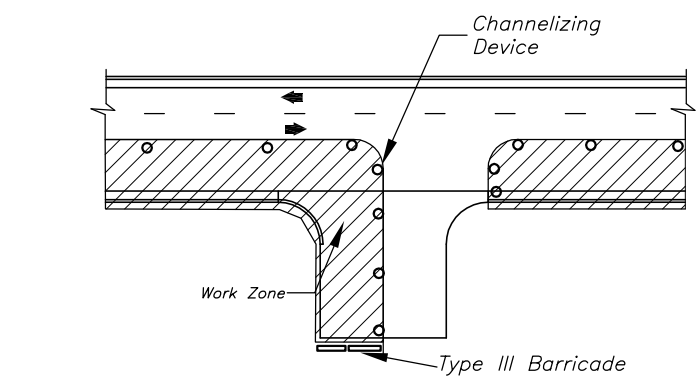
The entire area of barricade rails, both front and back, shall be fully reflectorized with type III high performance retroreflective sheeting.

The striped shall slope downward to the side traffic is to proceed or toward the center of the roadway at road closures.

Approved signs mounted on type III barricades should not cover more than 50% of the top two rails or 33% of the total area of the three rails.

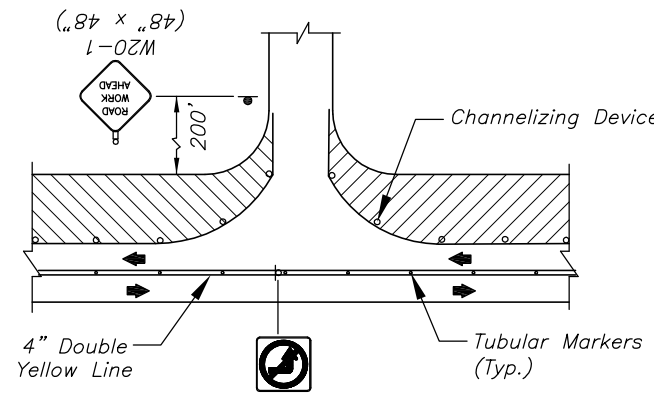
When barricades are placed end-to-end, a type A flashing warning light shall be mounted near each outside corner of the end barricades.

Type A flashing warning lights shall be maintained so as to be visible on a clear night from a distance of 3300'.



TYPICAL DRIVEWAY ENTRANCE CONSTRUCTION

Maintain access to businesses at all times. If a single property has multiple entrances, one entrance at a time may be closed for construction.



TYPICAL ENTRANCE AND SIDE STREET

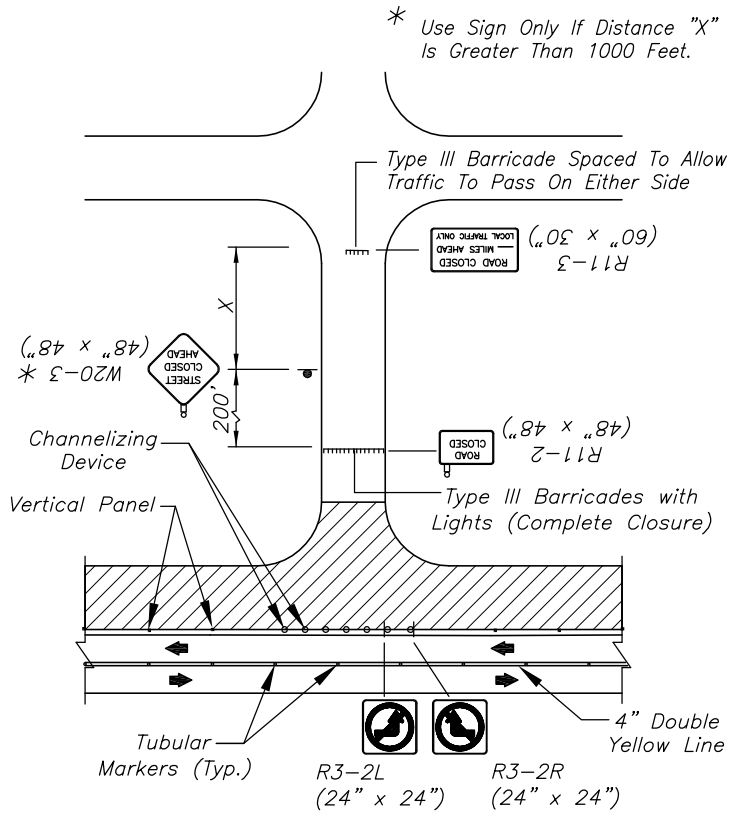
Notes:

- Signs:
  - The R11-4 (Road Closed To Thru Traffic Or Road Closed Local Traffic Only) sign shall be used when the distance to the point of complete closure of the roadway is less than 1 mile.
  - The R11-3 (road Closed # Miles Ahead Local Traffic Only) sign shall be used when the distance to the point of complete closure of the roadway is 1 mile or greater.
- Barricade Placement:
  - A) Complete Road Closure
 

When a roadway is closed, type III barricades shall be placed end-to-end to completely cover the roadway and shoulders. When access must be allowed for construction Or other official/government vehicles, type III barricades shall be longitudinally staggered far enough apart from one another to allow safe passage of vehicles and maintain the appearance of a closed roadway. Type III barricades shall be realigned and placed end-to-end to deny any access when the construction activity has ceased for the day.
  - B) Road Closed - Local Traffic
 

As shown in figure 4, when local traffic must be allowed access into the work zone, type III barricades shall be longitudinally staggered to maintain the appearance of a closed roadway. A second line of end-to-end type III barricades shall be placed just beyond the last access point in the work zone, to completely close the roadway as described in note 2A.

As shown in figure 1 and figure 3, at the point where thru traffic must detour and local traffic can proceed to the location where the roadway is completely closed, the R11-3 (Road Closed # Miles Ahead Local Traffic Only) Or R11-4 (Road Closed Local Traffic Only Or Road Closed To Thru Traffic) sign shall be used with type III barricades (winged position), placed on the shoulders of roadway.



TYPICAL CLOSED SIDE STREET

LEGEND

- ← Traffic Flow Arrow
- ▤ Type III Barricades with lights
- ⬢ Mount On Type III Barricade
- ⬢ Type B Warning Light
- One Post Sign
- Two Post Sign
- Traffic Lane
- ▨ Work Area
- Channelizing Device
- Tubular Marker
- Vertical Panel

**General Notes**  
All signs and pavement markings conflicting with construction traffic control shall be covered or removed as directed by the Engineer.

As the various construction activities progress, certain situations may arise that will preclude adhering to the original construction sequence or which, in the opinion of the Contractor, would readily adapt themselves to a more efficient phasing operation. Should this occur, the Contractor may submit to the Engineer an alternative plan for approval.

Contractor shall maintain existing drainage system during construction and address local drainage issues as necessary during construction. Temporary drainage measures will be subsidiary to other items in the contract. Contractor shall provide for drainage in milled areas opened to traffic. Pondered stormwater in milled areas will not be allowed.

Maintain access to all driveways and entrances within the project limits at all times. Driveways 16' wide and wider shall be constructed half at a time with the other half remaining open. Driveways less than 16' may be closed completely during construction. Where a grade differential is created due to milling, construct an asphalt wedge in order to maintain access.

J:\Civil\03431\dwg\Details\03431seq.dwg 2/9/2005 4:18:20 PM CST

KANSAS DEPARTMENT OF TRANSPORTATION

TRAFFIC STAGING SUMMARY AND TRAFFIC CONTROL

PROJECT NO. 87 N-0308-01 Sedgwick Co.

MKEC ENGINEERING CONSULTANTS, INC.  
WICHITA, KANSAS

DESIGNED BY: JRA	CHECKED BY: JRA
DRAWN BY: DPG	DATE: 6/30/04 SHEET 26 OF 37