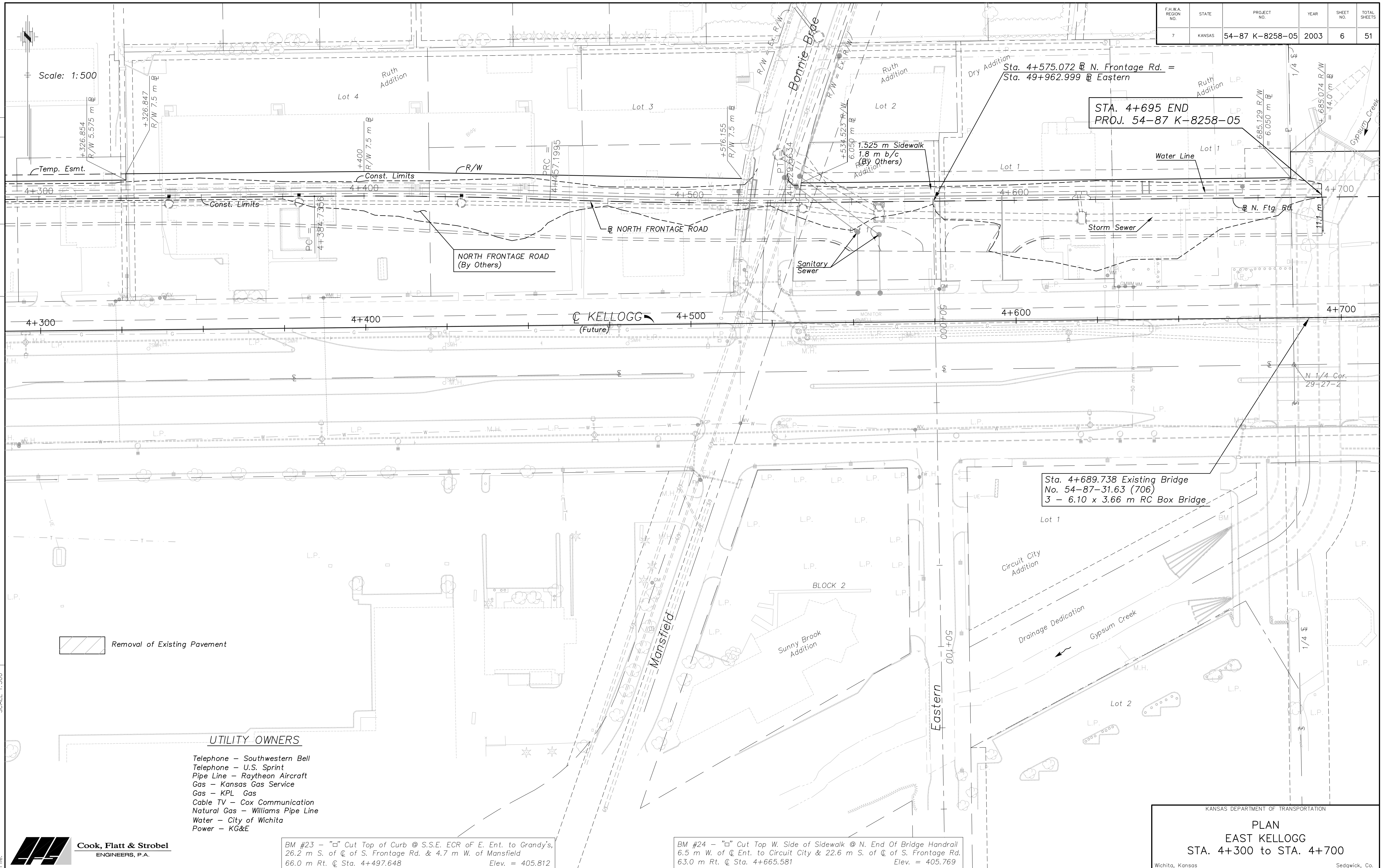


F.H.W.A. REGION NO.	STATE	PROJECT NO.	YEAR	SHEET NO.	TOTAL SHEETS
7	KANSAS	54-87 K-8258-05	2003	6	51

DATE	
BY	
REFERENCE NOTED	
REFERENCE CHECKED	



STA. 4+695 END
PROJ. 54-87 K-8258-05

Sta. 4+689.738 Existing Bridge
No. 54-87-31.63 (706)
3 - 6.10 x 3.66 m RC Box Bridge

Removal of Existing Pavement

UTILITY OWNERS

- Telephone - Southwestern Bell
- Telephone - U.S. Sprint
- Pipe Line - Raytheon Aircraft
- Gas - Kansas Gas Service
- Gas - KPL Gas
- Cable TV - Cox Communication
- Natural Gas - Williams Pipe Line
- Water - City of Wichita
- Power - KG&E

BM #23 - "□" Cut Top of Curb @ S.S.E. ECR of E. Ent. to Grandy's,
26.2 m S. of C. of S. Frontage Rd. & 4.7 m W. of Mansfield
66.0 m Rt. @ Sta. 4+497.648 Elev. = 405.812

BM #24 - "□" Cut Top W. Side of Sidewalk @ N. End Of Bridge Handrail
6.5 m W. of C. Ent. to Circuit City & 22.6 m S. of C. of S. Frontage Rd.
63.0 m Rt. @ Sta. 4+665.581 Elev. = 405.769

KANSAS DEPARTMENT OF TRANSPORTATION

PLAN
EAST KELLOGG
STA. 4+300 to STA. 4+700

Wichita, Kansas Sedgwick, Co.

Cook, Flatt & Strobel
ENGINEERS, P.A.