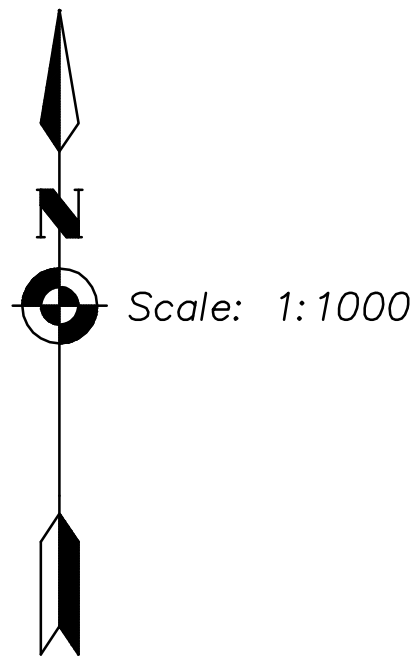
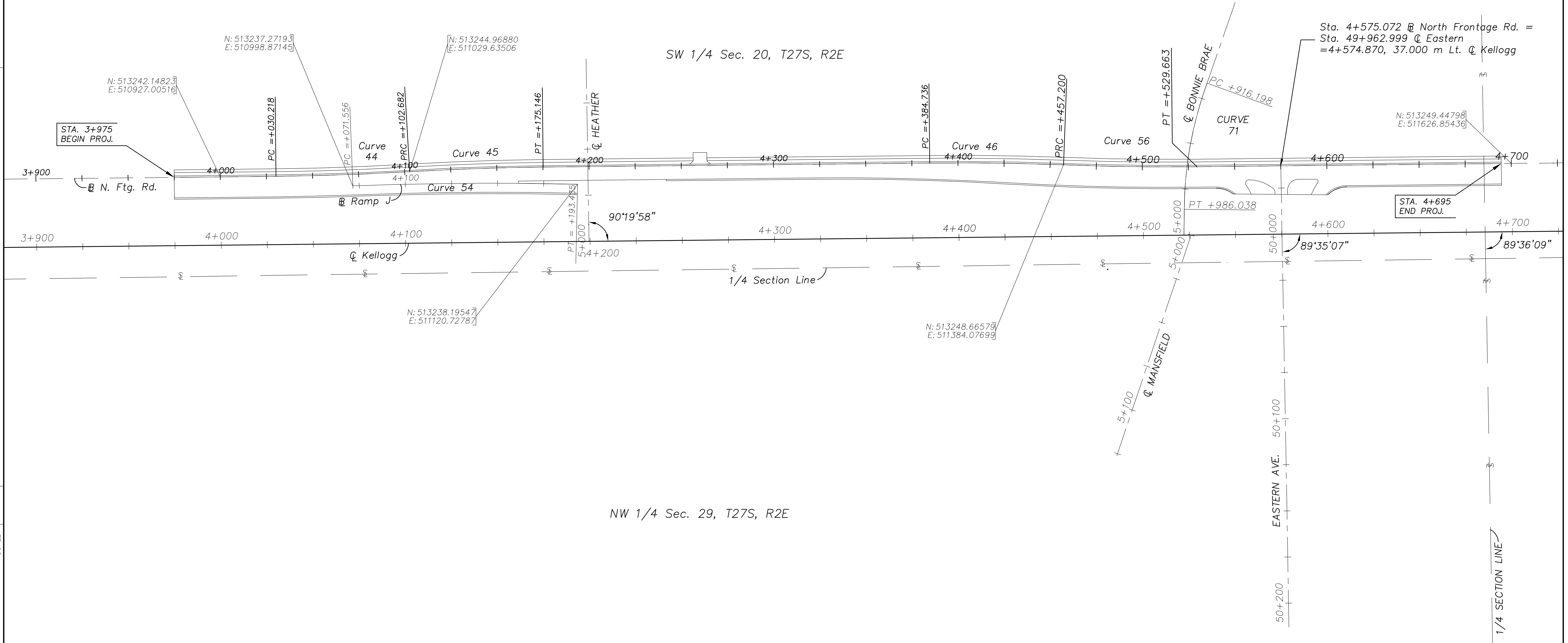


STATE	PROJECT NO.	YEAR	SHEET NO.	TOTAL SHEETS
KANSAS	54-87 K-8258-05	2003	9	51

CURVE DATA								
Curve No.	Curve Location	P.I. Sta. (Bk.)	Delta (DMS)	Radius (m)	Tangent (m)	Length (m)	External (m)	Super
44	North F.R.	4+066.457	02°46'05" Lt.	1,500.000	36.239	72.464	0.438	N.C.
45	North F.R.	4+138.921	02°46'05" Rt.	1,500.000	36.239	72.464	0.438	"
46	North F.R.	4+420.975	02°46'05" Rt.	1,500.000	36.239	72.464	0.438	"
54	Ramp J	4+132.514	03°29'30" Rt.	2,000.000	60.958	121.879	0.929	"
56	North F.R.	4+493.439	02°46'05" Lt.	1,500.000	36.239	72.464	0.438	"
71	Bonnie Brae	49+951.462	19°34'42" Lt.	204.388	35.264	69.841	3.020	"



DATE	
BY	
REFERENCE NOTED	
REFERENCE CHECKED	



Sta. 4+575.072 North Frontage Rd. =
Sta. 49+962.999 Eastern =
=4+574.870, 37.000 m Lt. Kellogg

N: 513249.44798
E: 511626.85436

STA. 4+695
END PROJ.

N: 513238.19547
E: 511120.72787

N: 513248.66579
E: 511384.07699

KANSAS DEPARTMENT OF TRANSPORTATION

GEOMETRIC LAYOUT
EAST KELLOGG (US-54)
STA. 3+900 TO STA. 4+700

Wichita, Kansas Sedgwick, Co.

Drawn by: **Cook, Flatt & Strobel**
 ENGINEERS, P.A.