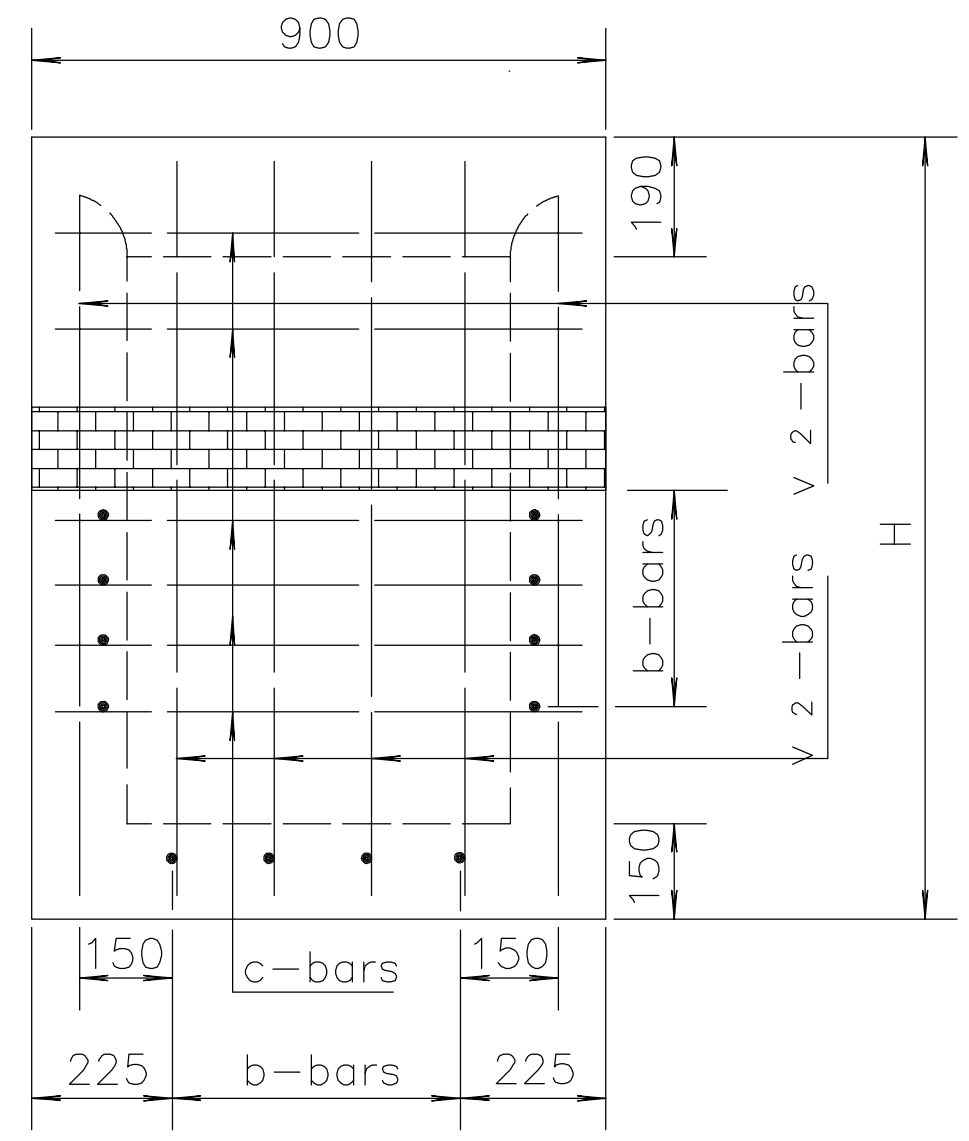
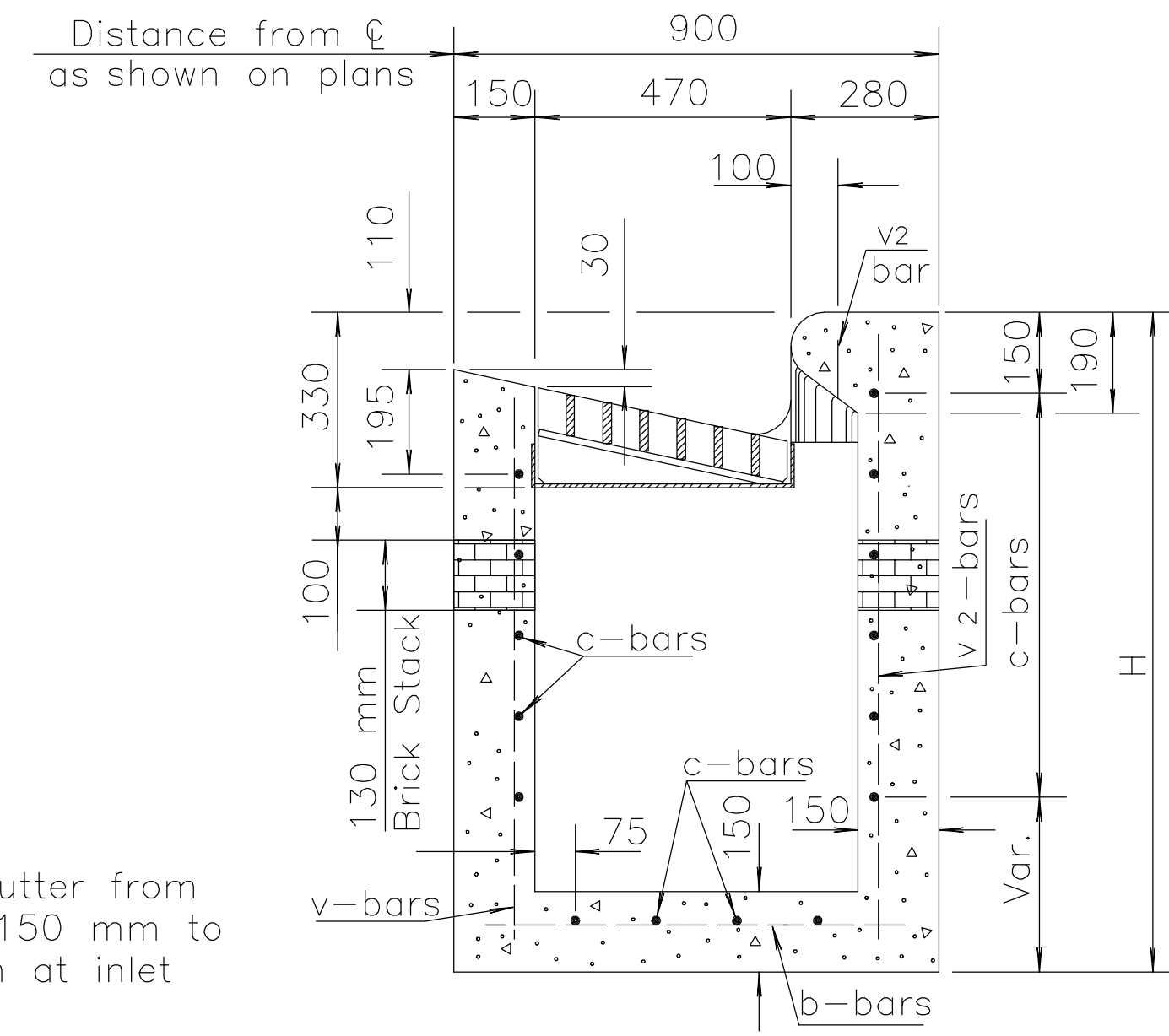
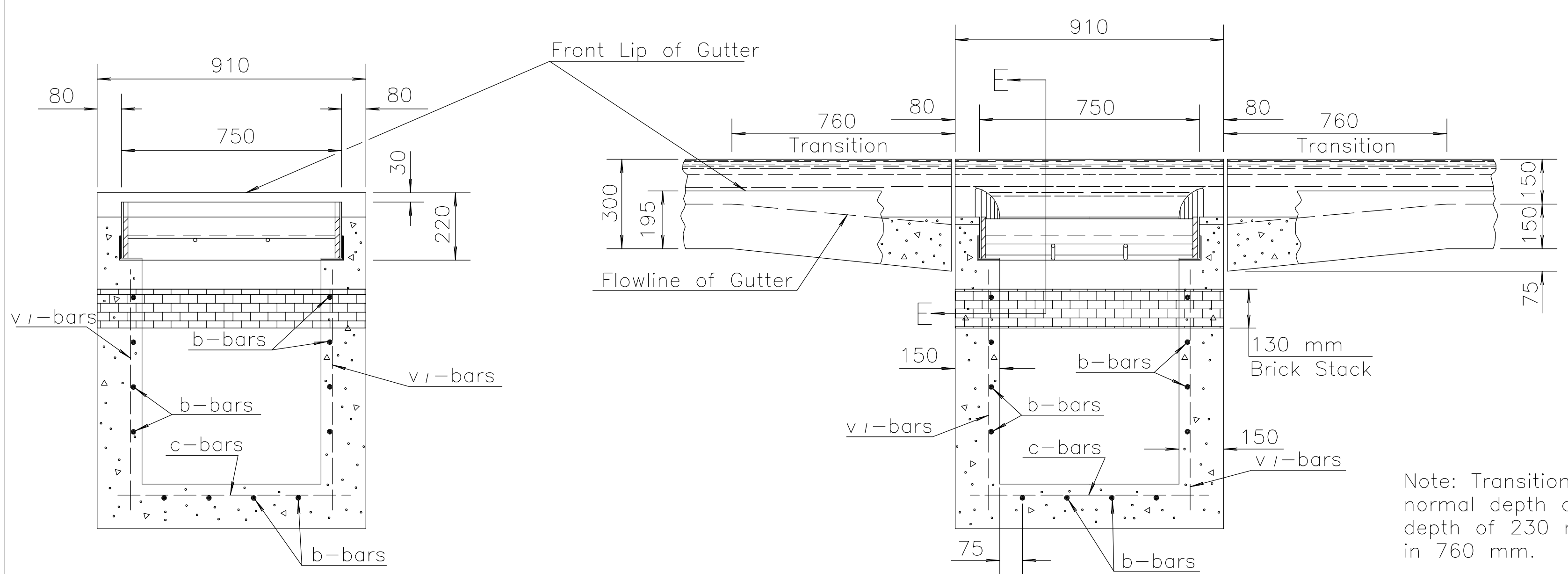


FHWA REGION NO.	STATE	PROJECT NO.	YEAR	SHEET NO.	TOTAL SHEETS
7	KANSAS	54-87 K-8258-05	2003	14	51

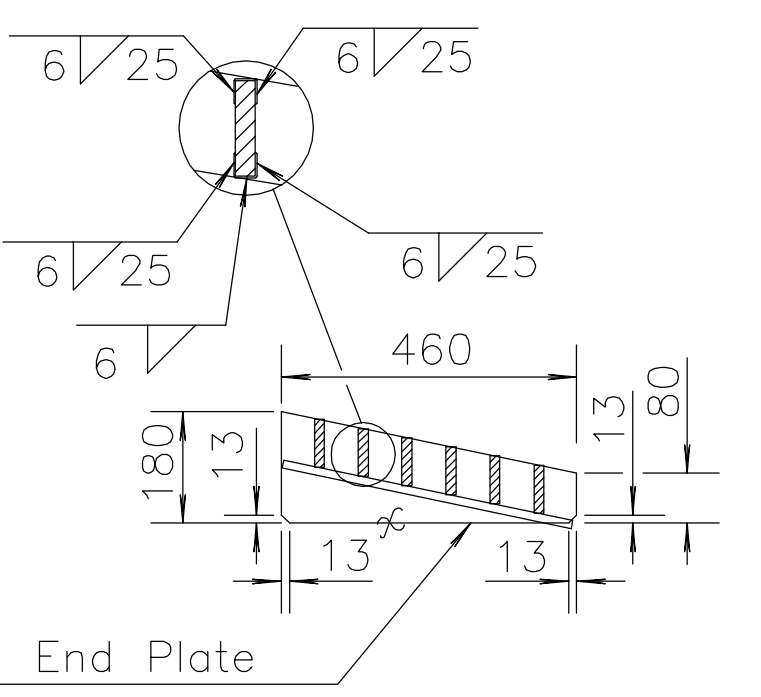
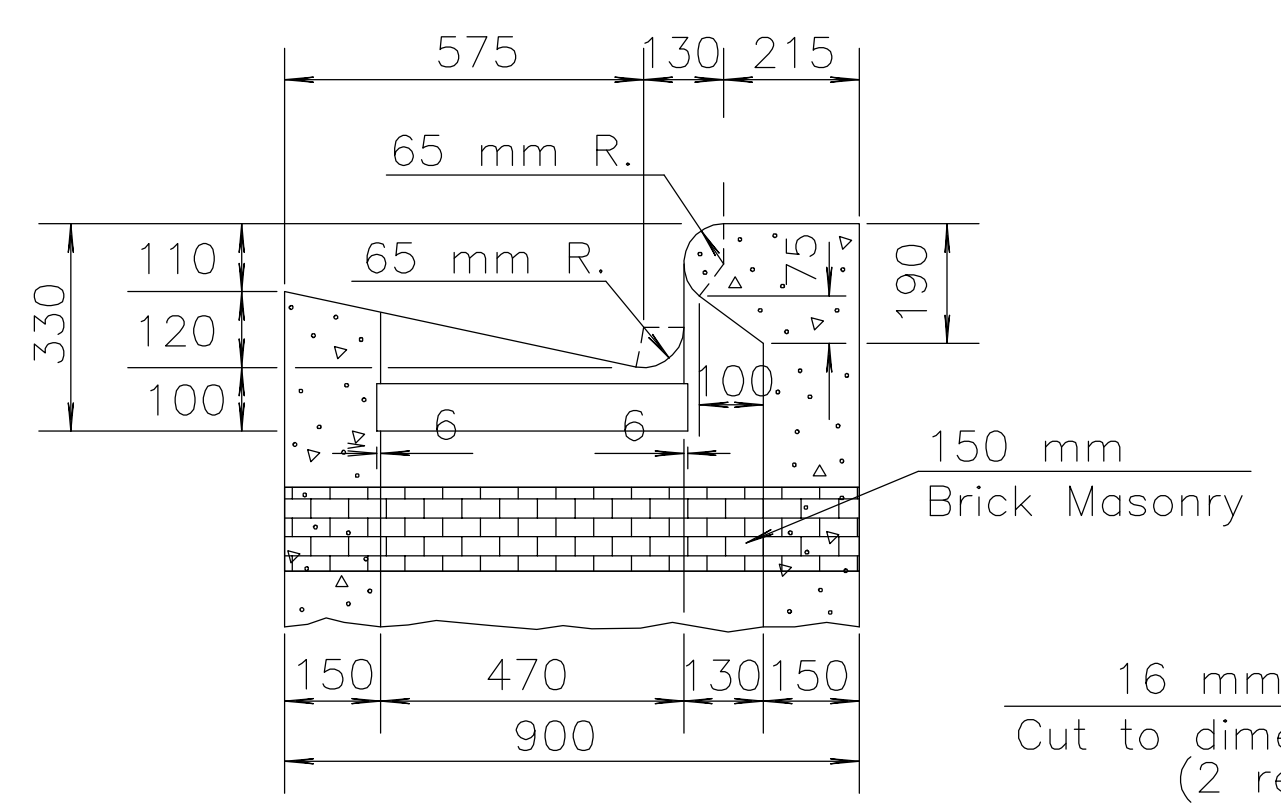


SECTION D-D

SECTION C-C

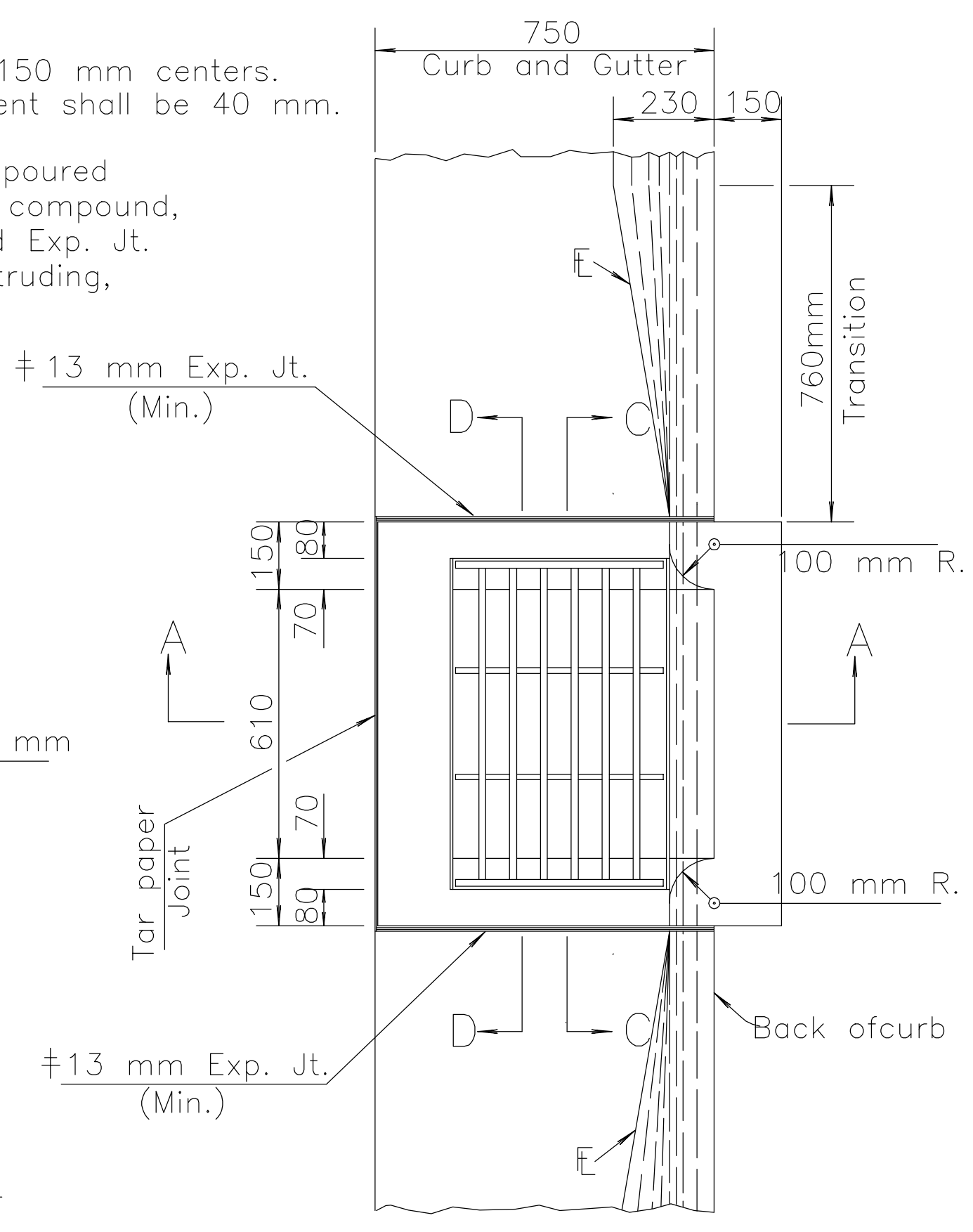
SECTION A-A

REAR WALL



Note: All reinforcing shall be #13 at 150 mm centers. Minimum clear distance to reinforcement shall be 40 mm.

Hot or cold poured joint sealing compound, or premolded Exp. Jt. Filler (Nonextruding, Type B).



PLAN

SECTION E-E

GRATE AND FRAME

Welded Structural Steel Grate & Frame Mass = 68 kg Each (With Cross-bars)

Note: To prevent grate from rocking on bearing angles, machine finish surfaces indicated thus "x".

On all interstate projects and rural area projects, the two 13 mm  $\phi$  x 460 mm bars are to be omitted. The mass of the grate and frame without these bars is 67 kg of structural steel.

Note: Precast Concrete adjustment rings may be substituted for the brick stack.

**GENERAL NOTES**

Class A Concrete, Class A Concrete (AE), or the mix used in Concrete Pavement, at the Contractor's option, shall be used throughout.

All exposed edges shall be finished with an edging tool.

Reinforcing bars shall be bent around pipe.

No reduction in concrete quantities shall be made for pipe openings.

When directed by the Engineer, a small opening in the back of the inlet shall be provided in order to drain a low area. Reinforcing bars shall extend through the opening. No reduction in concrete quantities will be made for this opening.

The floor of the inlet shall be shaped as shown in various "EXAMPLES" on Reinforced Concrete Manhole Standard Drawing RD730 SI.

No addition in concrete quantities shall be made for shaping floor of inlet.

No reduction in pay length of curb, gutter, or curb & gutter will be made through the inlet area.

All exposed structural steel shall be painted with a coat of inorganic zinc primer and then with a topcoat or a field coat of organic zinc, each coat to be 0.076 mm to 0.1 mm. As an alternate, the grate and frame may be hot dip galvanized after fabrication in accordance with the Standard Specifications.

All structural steel shall comply with ASTM A-36M, A-242M, or A-441M.

Curb and Gutter sections shall be shaped as shown where required by the installation of curb inlets. This work shall be subsidiary to other bid items.

Inlet may be precast or cast in place. Contractor shall submit reinforcement drawings for review.

NO.	DATE	REVISIONS	BY	APP'D
2	3-3-99	Added hot dip galvanized option.	R.J.S.	J.O.B.
1	1-27-97	Revised Rebar Designation	R.J.S.	J.O.B.

KANSAS DEPARTMENT OF TRANSPORTATION				
TYPE 10 CURB INLET				
RD745-SI				
FHWA APPROVAL	3-17-99	APP'D.	James O. Brewer	
DESIGNED	DETAILED	QUANTITIES	TRACED	M.S.T.
DESIGN CK.	DETAIL CK.	QUAN. CK.	TRACE CK.	R.J.S.

Drawn By: USERNAME Plotted: DATE TIME  
File: DONSPEC.DWG