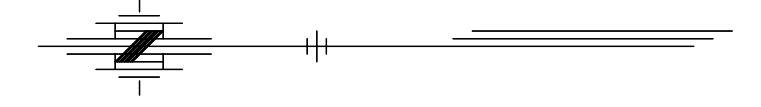


STATE	PROJECT NO.	YEAR	SHEET NO.	TOTAL SHEETS
KANSAS	54-87 K-8258-05	2003	22	51

Scale: 1:500

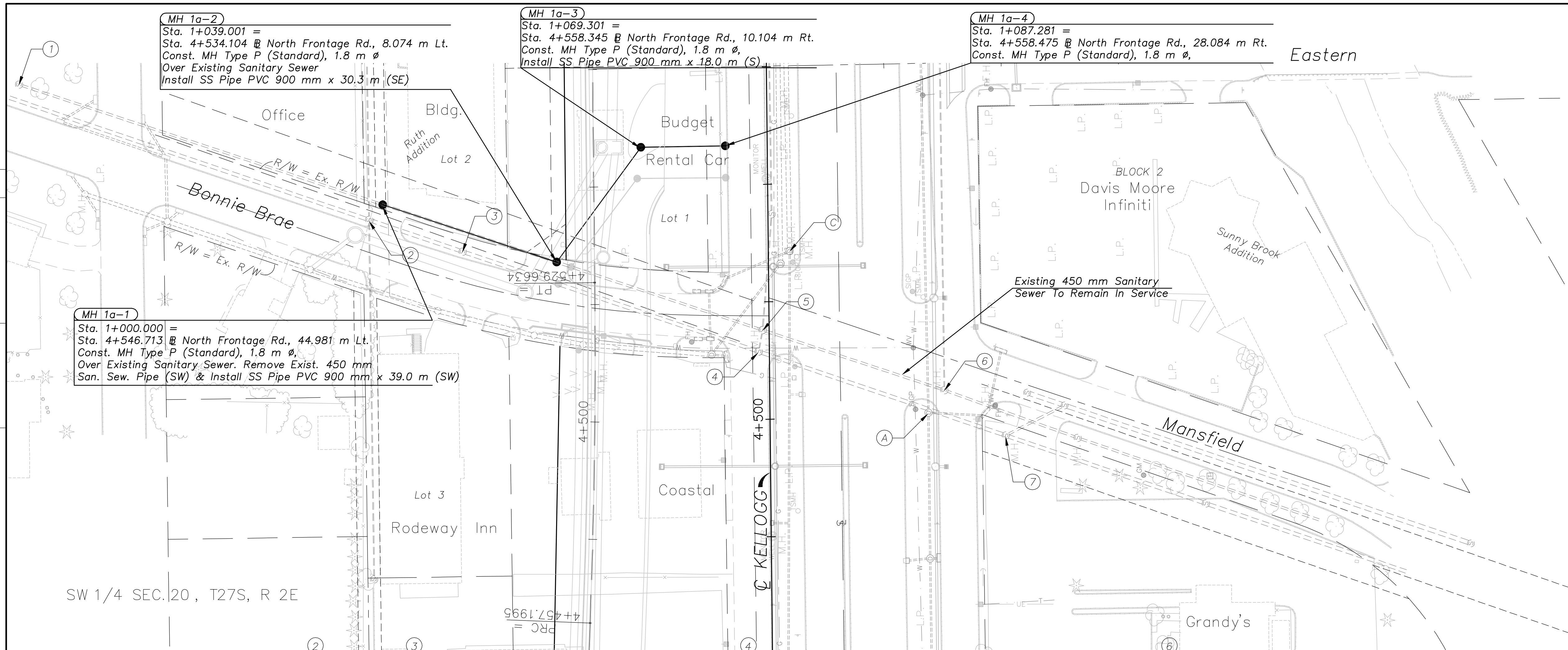


**MH 1a-2**  
 Sta. 1+039.001 =  
 Sta. 4+534.104 @ North Frontage Rd., 8.074 m Lt.  
 Const. MH Type P (Standard), 1.8 m Ø  
 Over Existing Sanitary Sewer  
 Install SS Pipe PVC 900 mm x 30.3 m (SE)

**MH 1a-3**  
 Sta. 1+069.301 =  
 Sta. 4+558.345 @ North Frontage Rd., 10.104 m Rt.  
 Const. MH Type P (Standard), 1.8 m Ø  
 Install SS Pipe PVC 900 mm x 18.0 m (S)

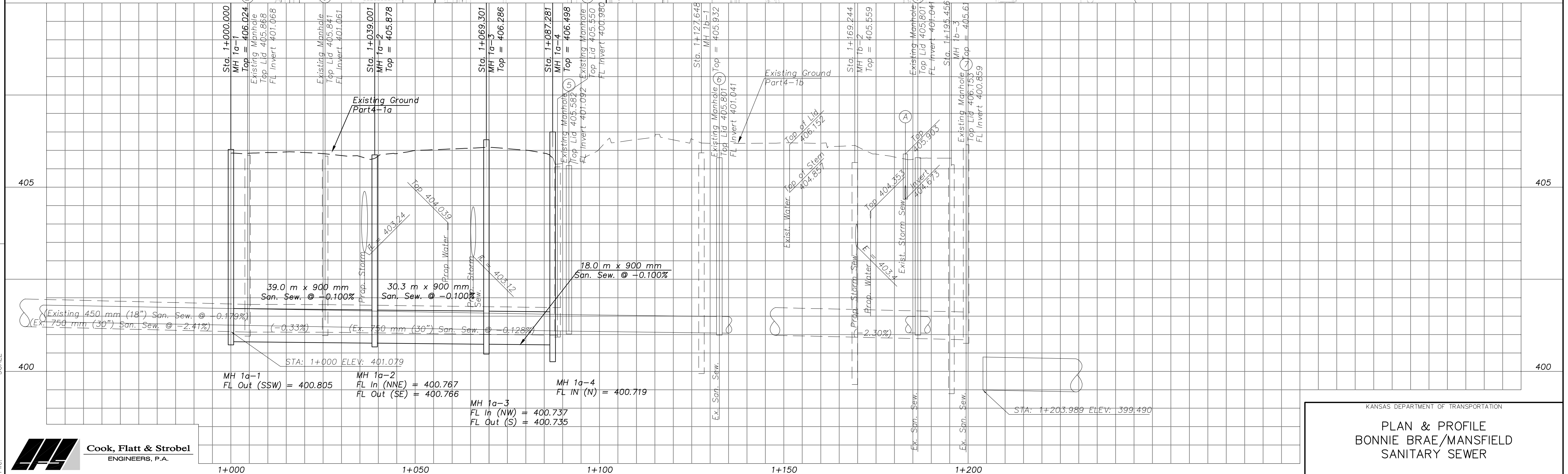
**MH 1a-4**  
 Sta. 1+087.281 =  
 Sta. 4+558.475 @ North Frontage Rd., 28.084 m Rt.  
 Const. MH Type P (Standard), 1.8 m Ø

**MH 1a-1**  
 Sta. 1+000.000 =  
 Sta. 4+546.713 @ North Frontage Rd., 44.981 m Lt.  
 Const. MH Type P (Standard), 1.8 m Ø  
 Over Existing Sanitary Sewer. Remove Exist. 450 mm  
 San. Sew. Pipe (SW) & Install SS Pipe PVC 900 mm x 39.0 m (SW)



DATE	BY

Existing manhole  
 Top Lid = 406.280  
 FL Invert = 401.390



STA: 1+000 ELEV: 401.079  
 MH 1a-1 FL Out (SSW) = 400.805  
 MH 1a-2 FL In (NNE) = 400.767  
 MH 1a-2 FL Out (SE) = 400.766  
 MH 1a-3 FL In (NW) = 400.737  
 MH 1a-3 FL Out (S) = 400.735  
 MH 1a-4 FL In (N) = 400.719

Drawn by: [Signature]  
 Plotted: [Signature]  
 SCALE



KANSAS DEPARTMENT OF TRANSPORTATION  
**PLAN & PROFILE**  
**BONNIE BRAE/MANSFIELD**  
**SANITARY SEWER**