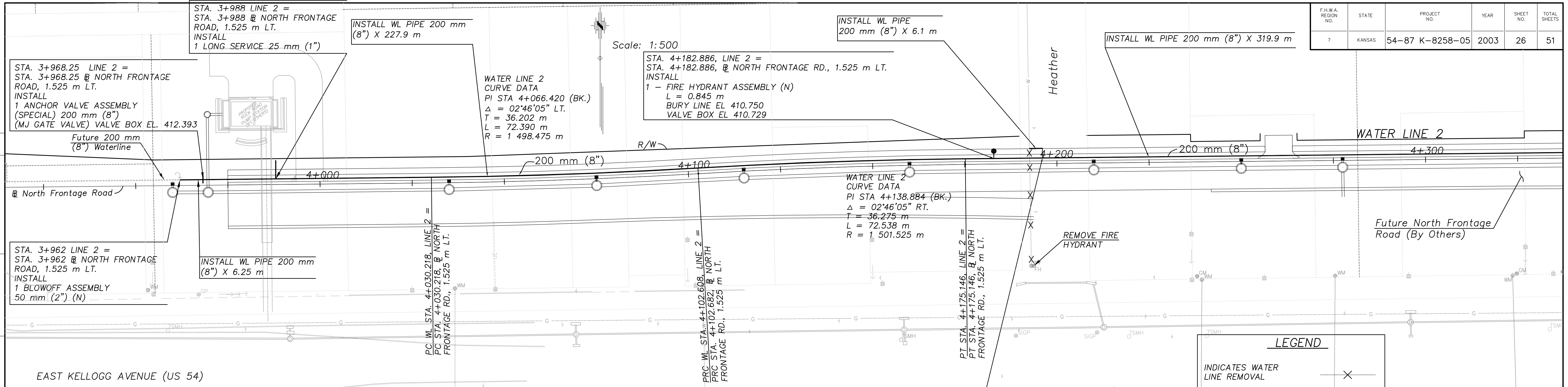


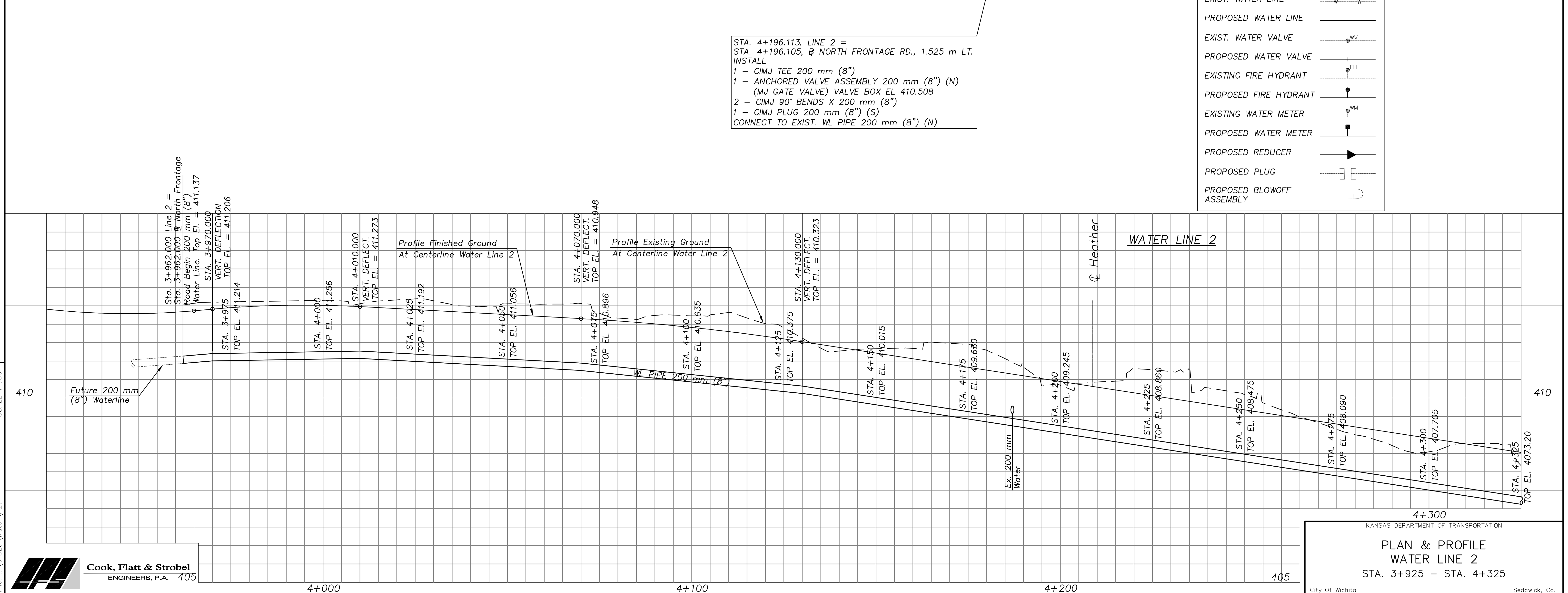
F.H.W.A. REGION NO.	STATE	PROJECT NO.	YEAR	SHEET NO.	TOTAL SHEETS
7	KANSAS	54-87 K-8258-05	2003	26	51

DATE	BY	REFERENCE NOTED	REFERENCE CHECKED



**LEGEND**

- INDICATES WATER LINE REMOVAL
- EXIST. WATER LINE
- PROPOSED WATER LINE
- EXIST. WATER VALVE
- PROPOSED WATER VALVE
- EXISTING FIRE HYDRANT
- PROPOSED FIRE HYDRANT
- EXISTING WATER METER
- PROPOSED WATER METER
- PROPOSED REDUCER
- PROPOSED PLUG
- PROPOSED BLOWOFF ASSEMBLY



Drawn by: J. 101026\Water\P27

Plotfile: J. 101026\Water\P27

SCALE 1:500



KANSAS DEPARTMENT OF TRANSPORTATION

**PLAN & PROFILE**

**WATER LINE 2**

STA. 3+925 - STA. 4+325

City Of Wichita Sedgwick, Co.