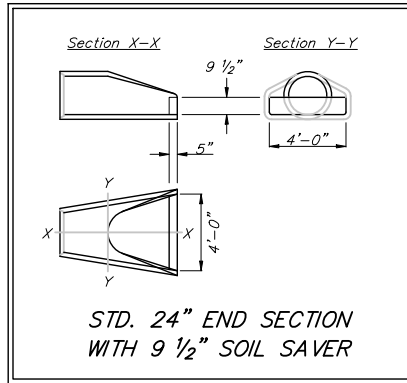


BENCHMARKS:
 BM #1: "Cut on Top of Curb at West Line of Lot 7, Block A, Auburn Hills 5th Addition. Elev. = 207.73 (City Datum)

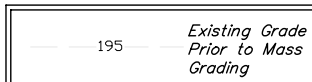
BM #2: Disc in Back of Curb, North of Front Corner Common to Lots 23 and 24, Block D, Auburn Hills 12th Addition. Elev. = 191.84 (City Datum)

BM #3: "Cut in Middle of Curb Inlet Top Adjacent to the South Corner of Lot 15, Block B. Elev. = 196.44 (City Datum)



P.V.I.
 Elev. = 199.50
 70' V.C.

Trees and shrubs in public right-of-way which are in direct conflict with proposed new construction shall be removed by the Contractor ONLY with the Developer or Baughman Company approval. Trees and shrubs which are not in direct conflict with proposed new construction shall be saved and protected from damage.



Curve #9A
 Curve Data Based on Centerline
 Rad. = 315' Delta = 20° 23' 28" Tangent = 56.65'
 Arc = 112.11' L.C. = 111.52' Def/Ft. = 5.45655 Min.

Station	Arc	FACE CHORD LENGTHS	Defl.	T. Defl.
		8 Lt.		
A	6.79'	6.96'	0°00'00"	0°00'00"
B	28.21'	28.92'	0°37'03"	0°37'03"
C	16.30'	16.71'	1°28'56"	3°10'59"
D	8.00'	8.20'	0°43'39"	5°23'34"
E	26.25'	26.91'	2°23'14"	7°46'48"
F	15.75'	16.15'	1°25'57"	9°12'45"
G	10.81'	11.08'	0°58'59"	10°11'44"

Curve #9B
 Curve Data Based on Centerline
 Rad. = 285' Delta = 20° 26' 28" Tangent = 51.39'
 Arc = 101.68' L.C. = 101.14' Def/Ft. = 6.03101 Min.

Station	Arc	FACE CHORD LENGTHS	Defl.	T. Defl.
		8 Rt.		
I	—	—	0°00'00"	0°00'00"
J	6.15'	5.98'	0°37'05"	0°37'05"
K	23.75'	23.08'	2°23'14"	3°00'19"
L	5.10'	4.96'	0°30'46"	3°31'05"
M	6.65'	6.46'	0°40'06"	4°11'11"
N	12.00'	11.66'	1°12'23"	5°23'34"
O	23.75'	23.08'	2°23'14"	7°46'48"
P	14.25'	13.85'	1°25'56"	9°12'44"
Q	10.03'	9.75'	1°00'30"	10°13'14"

Curve #10
 Curve Data Based on Centerline
 Rad. = 165' Delta = 18° 36' 29" Tangent = 27.03'
 Arc = 53.59' L.C. = 53.35' Def/Ft. = 10.41690 Min.

Station	Arc	FACE CHORD LENGTHS	Defl.	T. Defl.
		8 Rt.		
R	18.44'	17.54'	3°12'05"	3°12'05"
S	21.53'	20.47'	3°44'17"	6°56'22"
T	13.62'	12.96'	2°21'52"	9°18'14"

Curve #11A
 Curve Data Based on Centerline
 Rad. = 200' Delta = 15°08' 18" Tangent = 26.58'
 Arc = 52.84' L.C. = 52.69' Def/Ft. = 8.59481 Min.

Station	Arc	FACE CHORD LENGTHS	Defl.	T. Defl.
		8 Lt.		
U+00.00	—	—	0°00'00"	0°00'00"
U+26.42	26.42'	27.46'	3°47'04"	3°47'04"
U+32.84	26.42'	27.46'	3°47'05"	7°34'09"

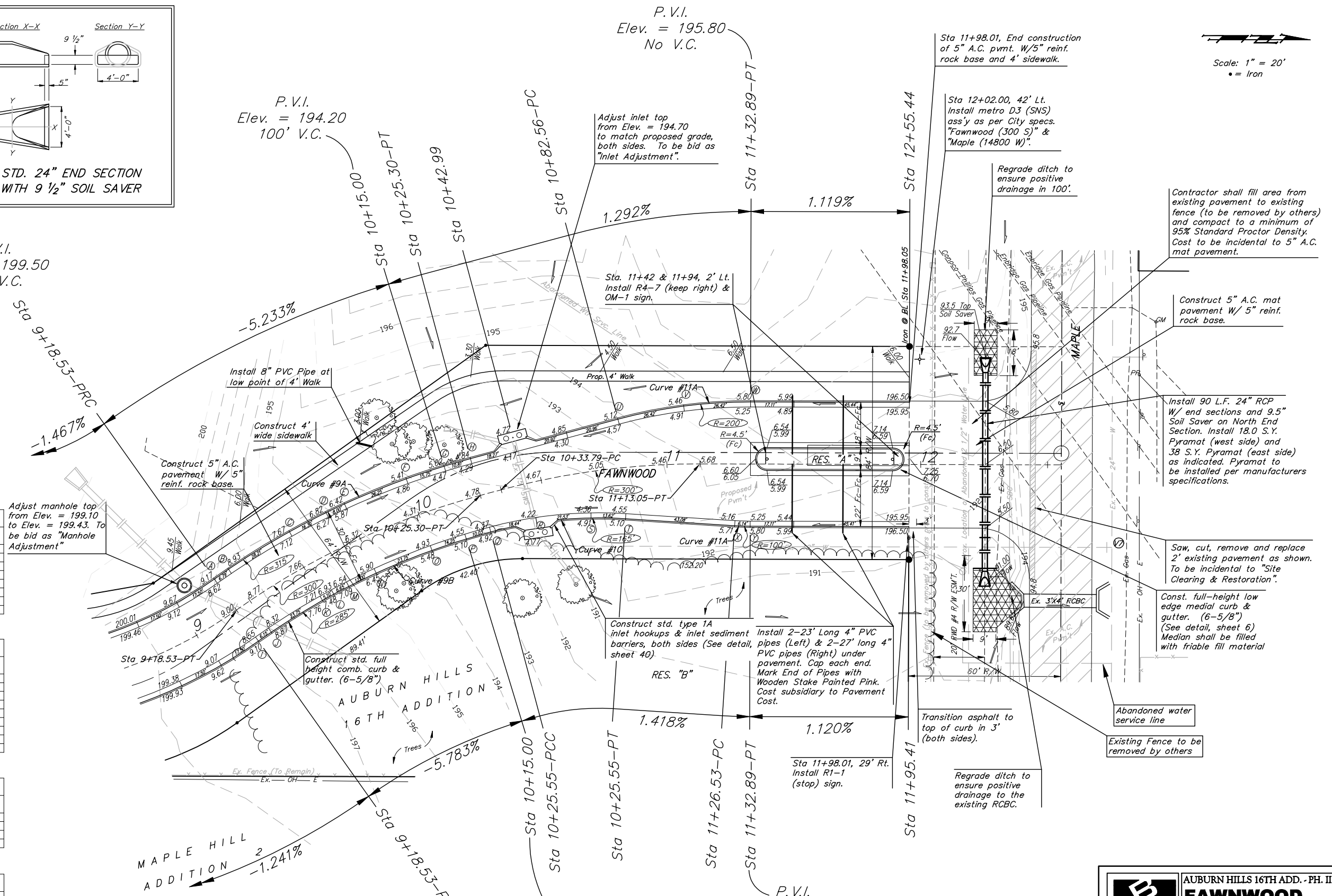
Curve #11B
 Curve Data Based on Centerline
 Rad. = 100' Delta = 3° 31' 11" Tangent = 3.07'
 Arc = 6.14' L.C. = 6.14' Def/Ft. = 17.19734 Min.

Station	Arc	FACE CHORD LENGTHS	Defl.	T. Defl.
		8 Lt.	8 Rt.	
U+00.00	—	—	0°00'00"	0°00'00"
U+06.14	6.14'	5.65'	6.63'	1°45'35"

WATER VALVE LOCATION TABLE

VALVE NUMBER	BASELINE STATION	OFFSET DISTANCE	OFFSET DIRECTION
V7	12+77.98	32.5'	Rt.

Paving contractor will be responsible to operate all water valves on the project, in the presence of the inspector, to ensure accessibility to the valves, and that all valves are left in the "ON" position when the project is completed.



P.V.I.
 Elev. = 194.20
 100' V.C.

P.V.I.
 Elev. = 199.50
 70' V.C.

P.V.I.
 Elev. = 195.80
 No V.C.

P.V.I.
 Elev. = 194.20
 100' V.C.

P.V.I.
 Elev. = 195.80
 No V.C.

Baughman AUBURN HILLS 16TH ADD. - PH. II
FAWNWOOD
 Sta 8+86.78 to Sta 12+58.01

Engineering | Surveying | Planning | Landscape Architecture

PROJECT NUMBER: 472-84291
 REVISIONS:

DESIGN: AEO
 DRAWN: TMS
 APPROVED: [Signature]
 DATE: 06/06

SCALE: Noted
 SHEET: **12 OF 61**

AuburnHills16thPhaseII.dwg 06-02-E302