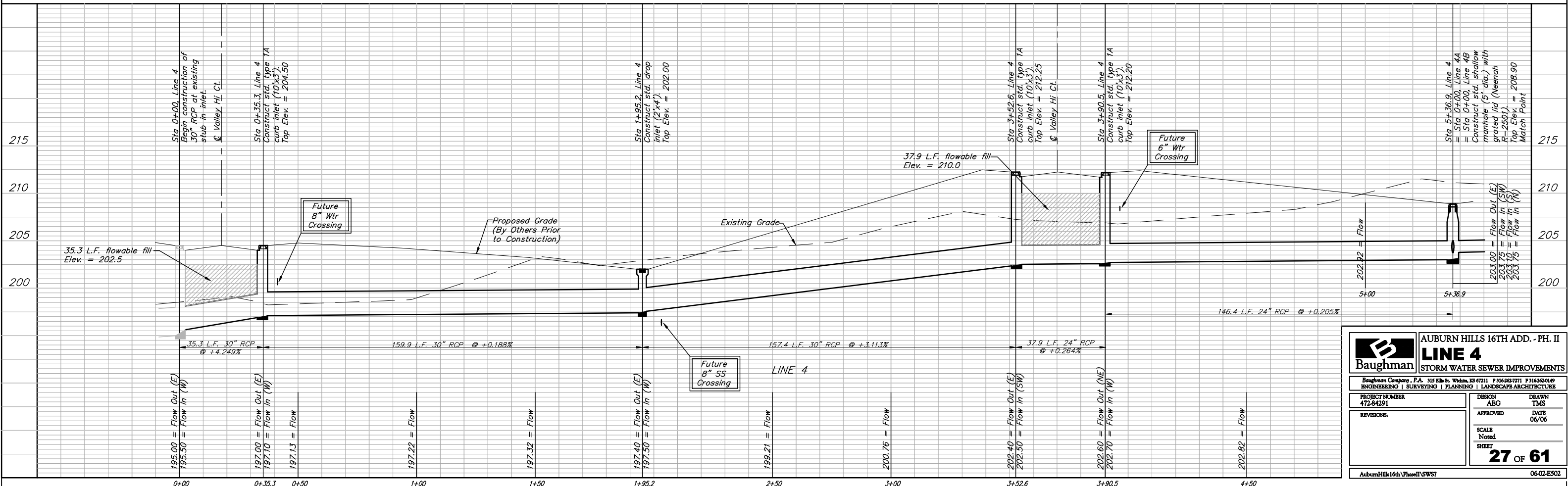
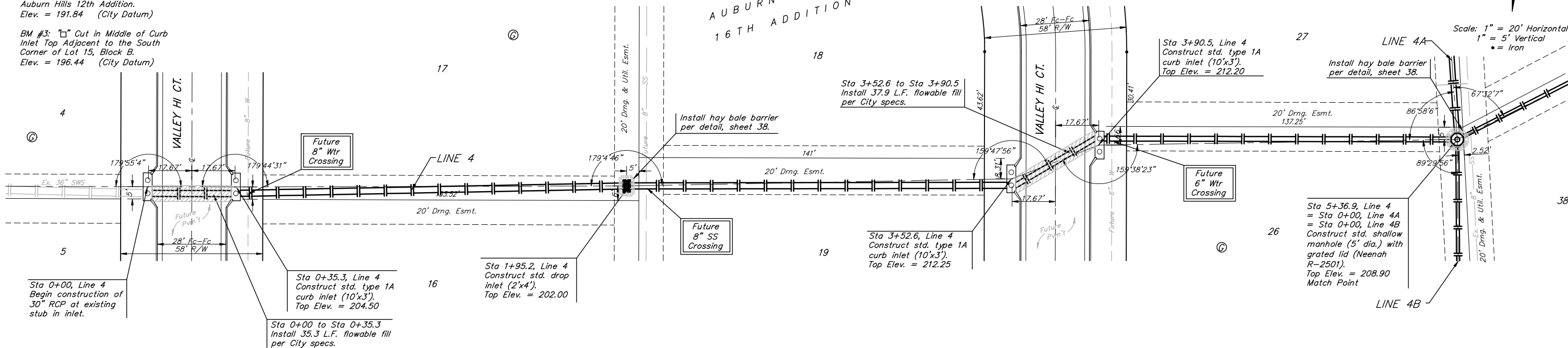


BENCHMARKS:
 BM #1: "Cut on Top of Curb at West Line of Lot 7, Block A, Auburn Hills 5th Addition. Elev. = 207.73 (City Datum)

BM #2: Disc in Back of Curb, North of Front Corner Common to Lots 23 and 24, Block D, Auburn Hills 12th Addition. Elev. = 191.84 (City Datum)

BM #3: "Cut in Middle of Curb Inlet Top Adjacent to the South Corner of Lot 15, Block B. Elev. = 196.44 (City Datum)

Remove trees only as necessary for sanitary sewer construction and only with permission of Developer or Baughman Co. Cost of removal to be incidental to lump sum bid item "Site Clearing & Restoration".



Baughman AUBURN HILLS 16TH ADD. - PH. II
LINE 4
 STORM WATER SEWER IMPROVEMENTS

ENGINEERING | SURVEYING | PLANNING | LANDSCAPE ARCHITECTURE

PROJECT NUMBER: 472-84291
 DESIGN: ABG
 DRAWN: TMS
 APPROVED: [Signature]
 DATE: 06/06

SCALE: Noted
 SHEET: 27 OF 61

AuburnHills16thPhaseII-SWS7 06-02-E502