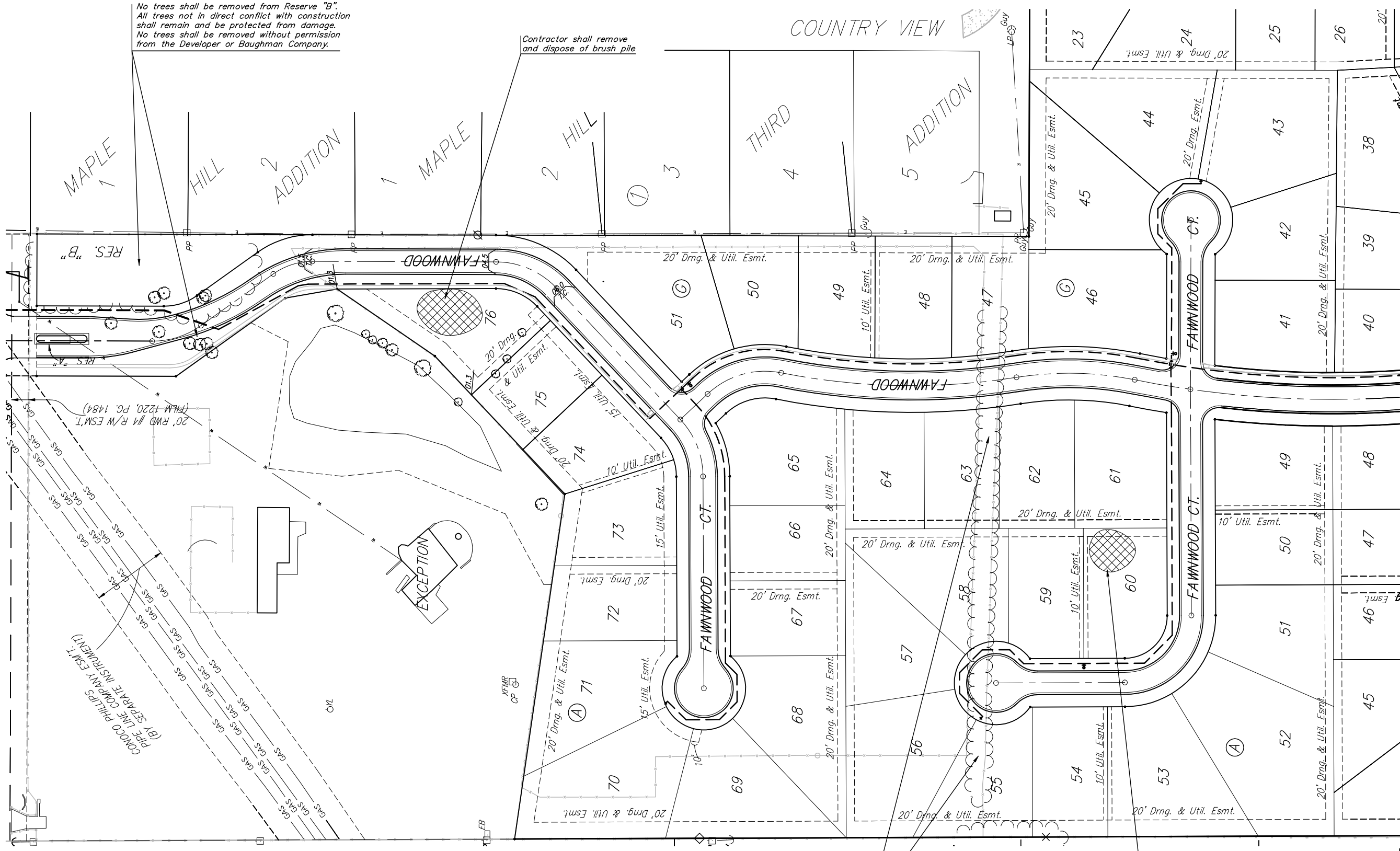


No trees shall be removed from Reserve "B".
 All trees not in direct conflict with construction shall remain and be protected from damage.
 No trees shall be removed without permission from the Developer or Baughman Company.

Contractor shall remove and dispose of brush pile

COUNTRY VIEW



Only trees in direct conflict with construction may be removed with permission from the Developer or Baughman Company.

Contractor shall remove and dispose of rubble pile

		Auburn Hills 16th Add.-PH.II Clearing Plan Street Improvements	
<small>Baughman Company, P.A. 315 Hill St. Waltham, MA 02124 P 3162627271 F 3162620149 ENGINEERING SURVEYING PLANNING LANDSCAPE ARCHITECTURE</small>			
PROJECT NUMBER 472-64291	DESIGN AEO	DRAWN RDM	DATE 06/06
REVISIONS:	APPROVED	SCALE Noted	SHEET 32 OF 61
<small>Auburn Hills 16th\PHASE 2\Cleaing Plan.dwg</small>		<small>06-02-E502</small>	