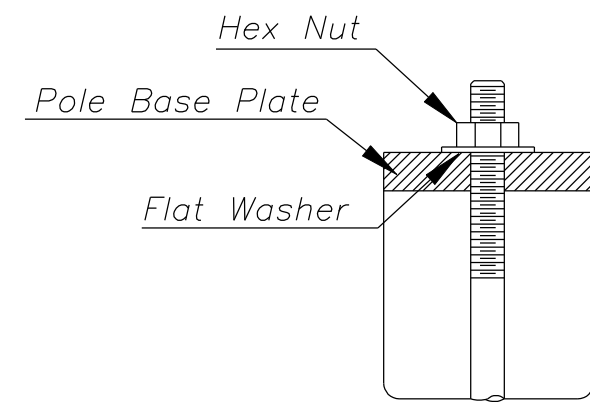
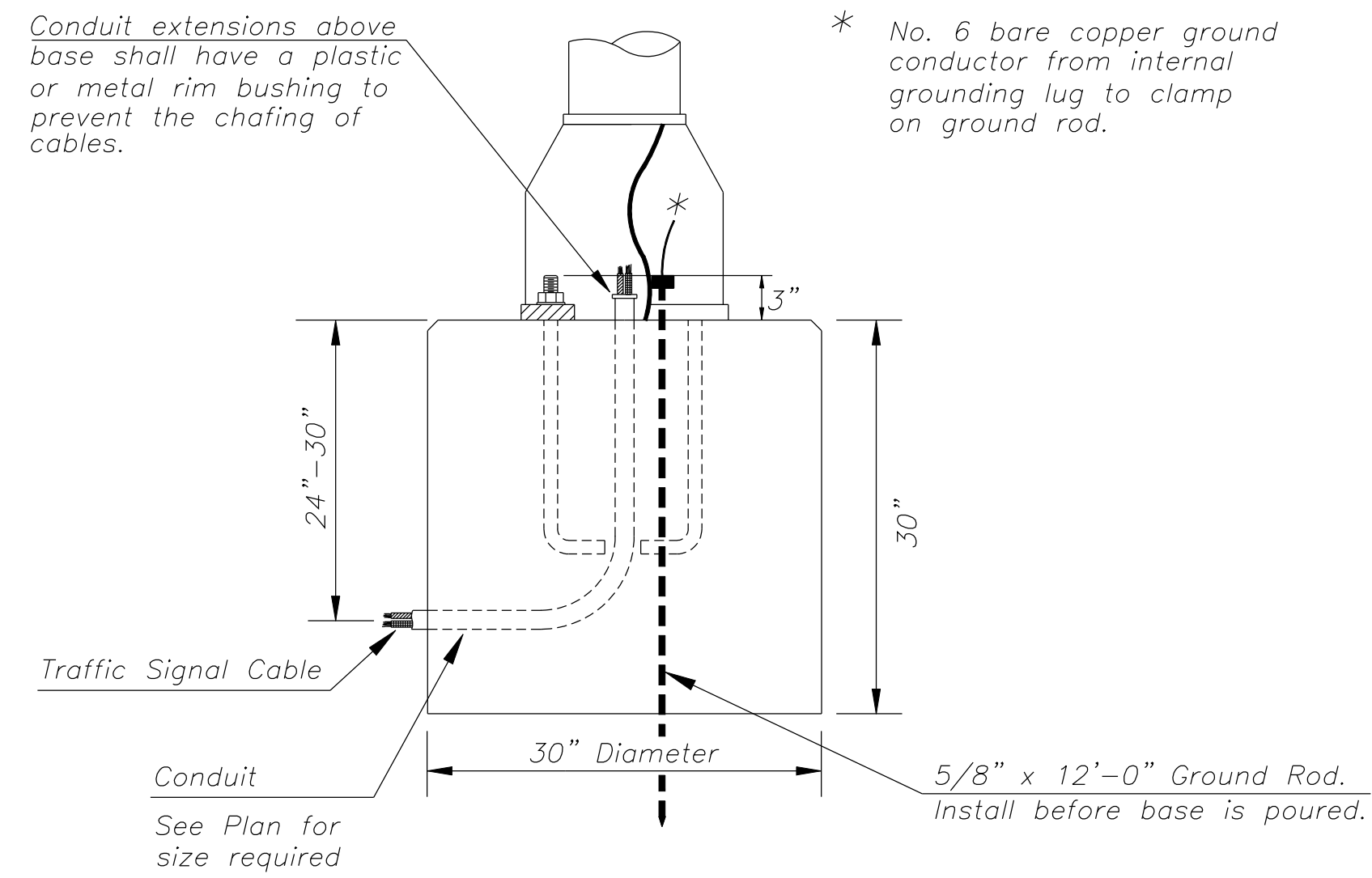
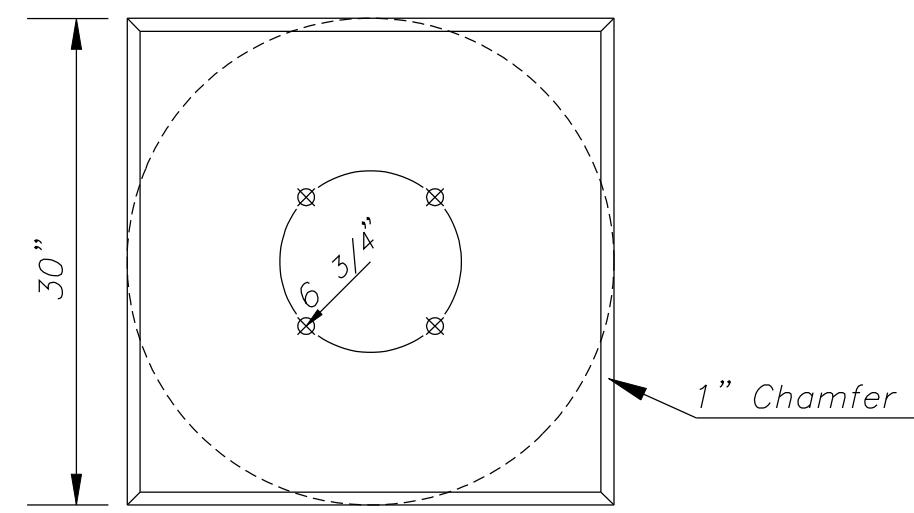


Use Keystone "No-Weld Number 1 Anti-Seize Compound" on all bolts & nuts.

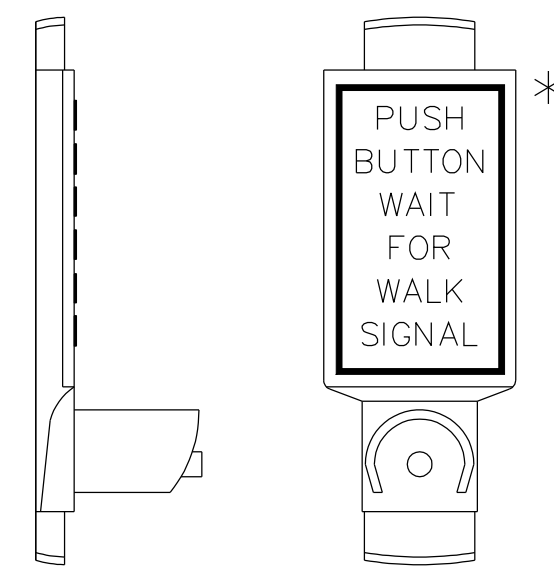


ANCHOR BOLT
DETAIL



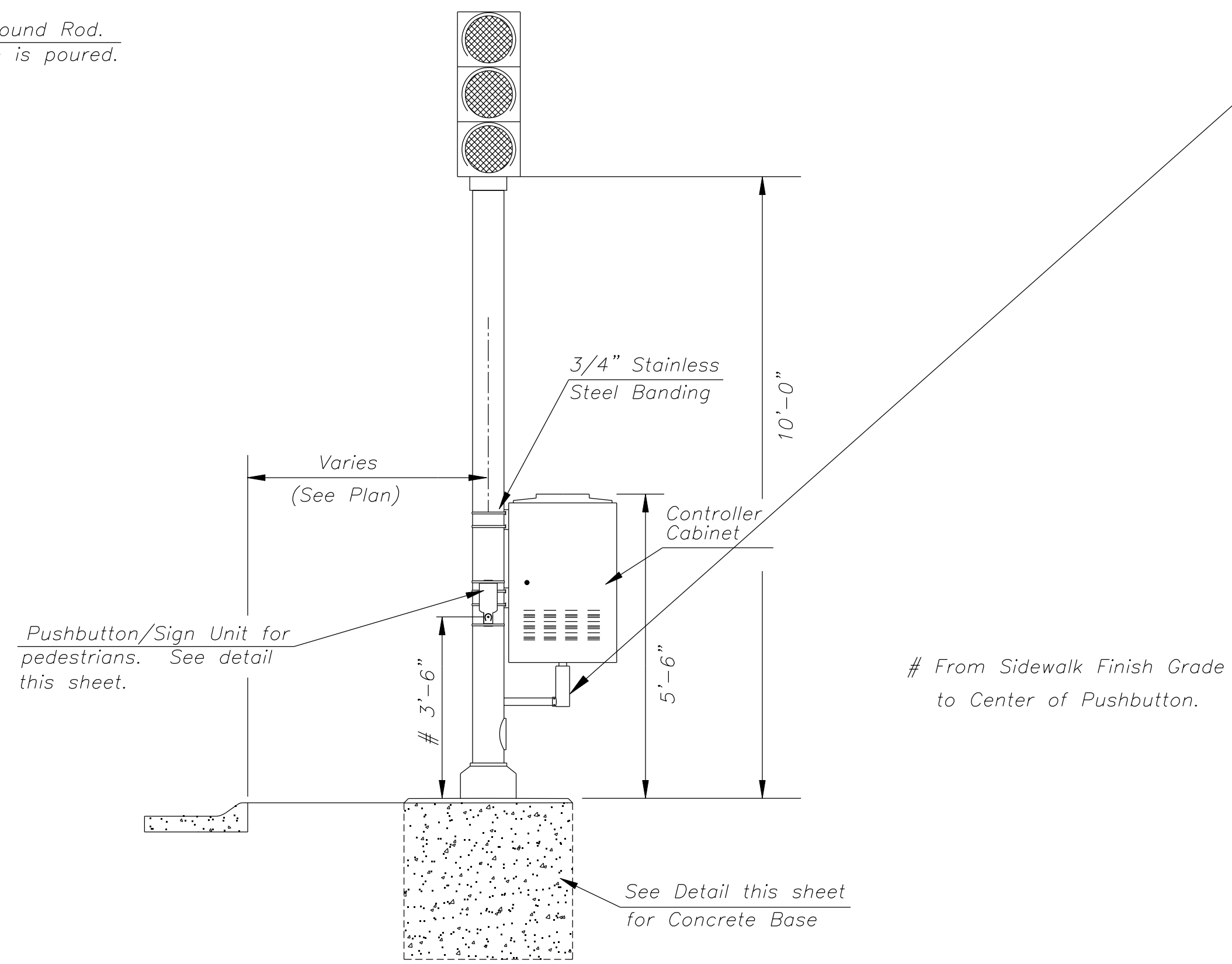
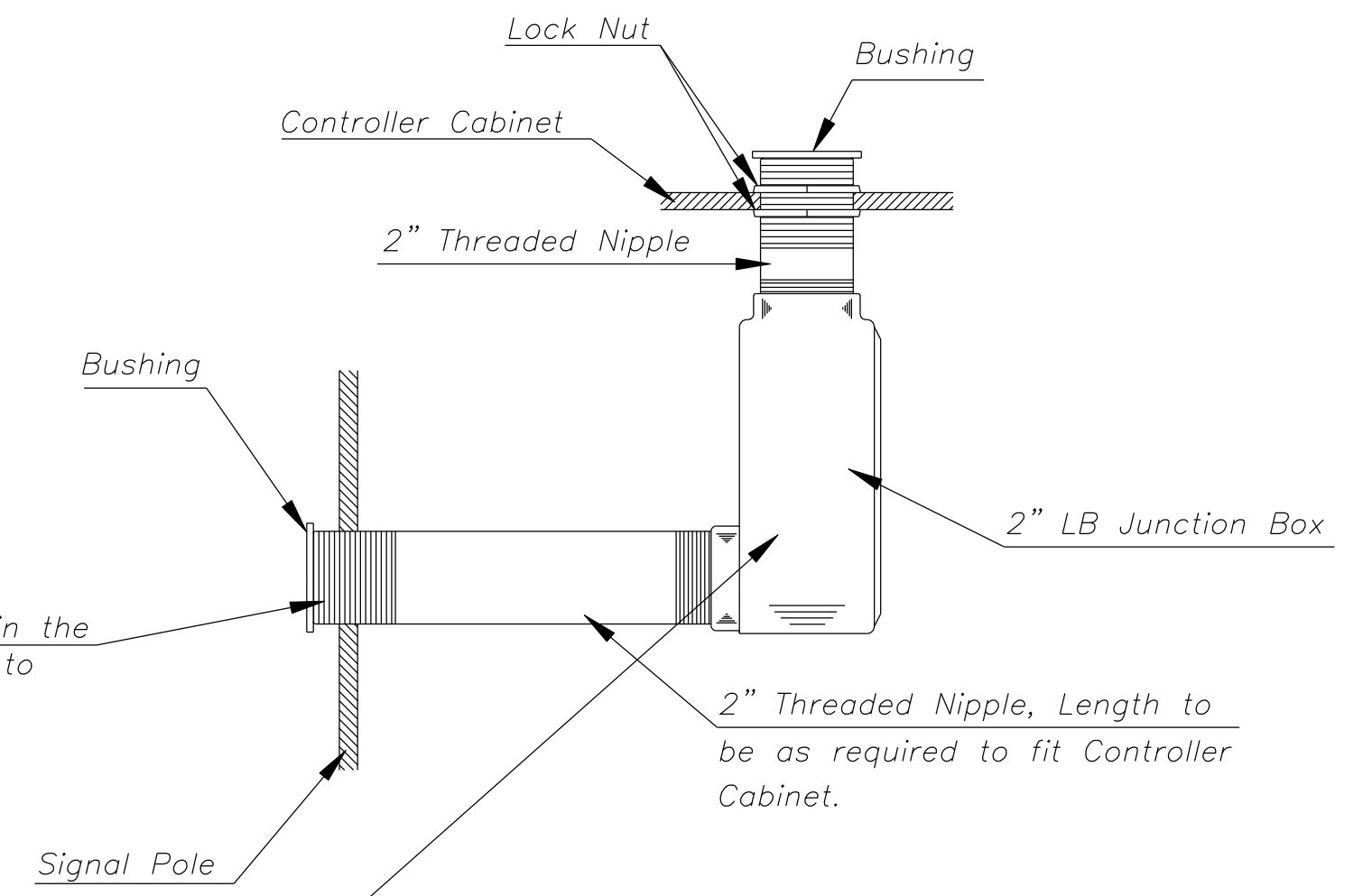
CONCRETE BASE DETAIL

* NOTE: MESSAGE TO BE CAST WITH HOUSING (ONE PIECE)



INSTALL PEDESTRIAN PUSHBUTTON UNDERNEATH CORRESPONDING PEDESTRIAN SIGNAL HEAD ON SIDE OF POLE NEAREST CROSSWALK. UNIT SHALL BE FIRMLY ATTACHED TO THE SIDE OF POLE WITH 3/4" STEEL BANDS. SHARP ENDS SHALL BE FOLDED UNDER TO PREVENT INJURY TO PEDESTRIANS.

PEDESTRIAN PUSHBUTTON/SIGN
UNIT DETAIL



TRAFFIC SIGNAL PEDESTAL

Traf Sig Ped & Base Am Std.dwg

PROJECT DESCRIPTION		
TRAFFIC SIGNAL PEDESTAL & CONCRETE BASE		
DETAIL SHEET		
PROJECT NUMBER		
472-84175		
DRAWN BY: T.M.	SCALE	REVISED BY:
DATE: MAY 97	NO SCALE	DATE:
CITY OF WICHITA		
DEPARTMENT OF PUBLIC WORKS		
ENGINEERING DIVISION		SHEET 72 OF 117
SCOTT LOGAN, TRAFFIC ENGINEER		