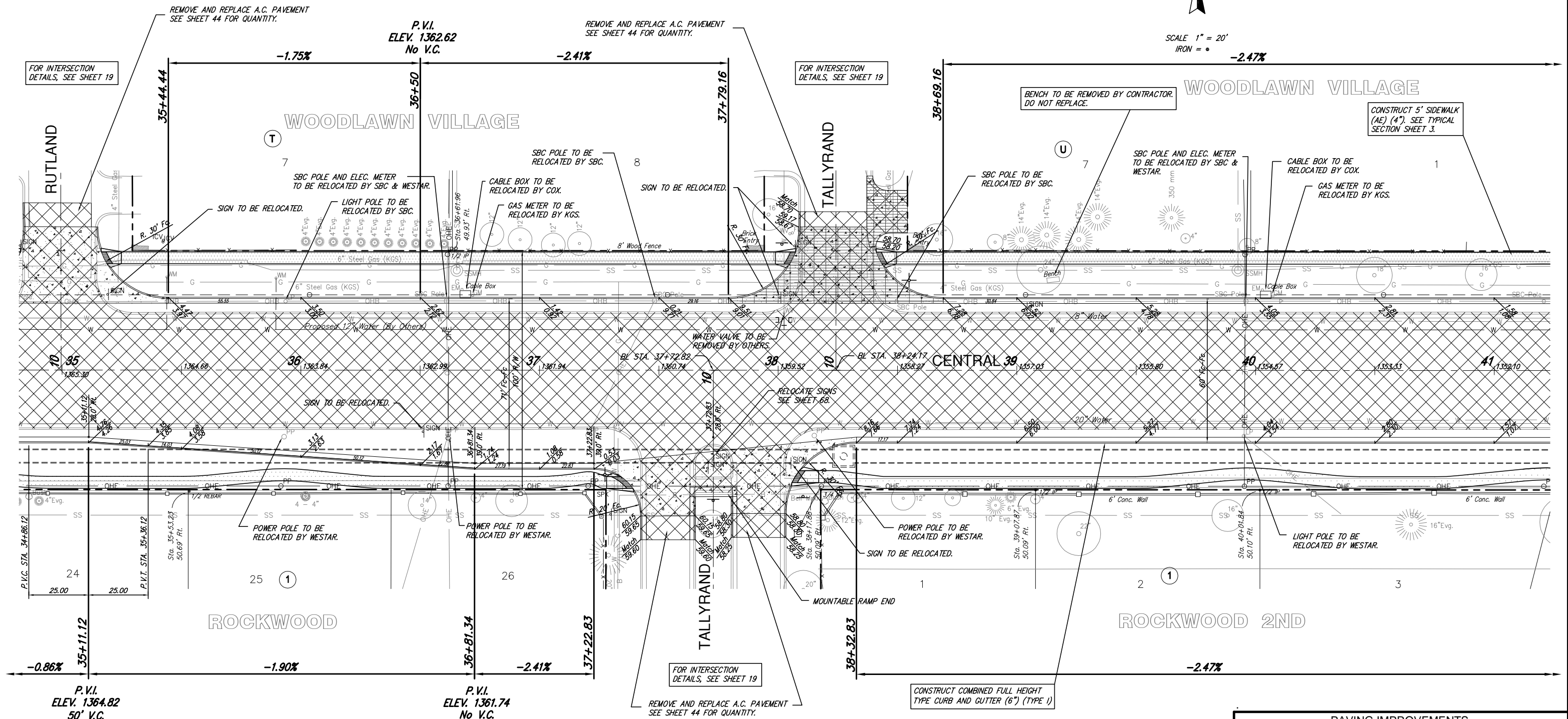


NOTE: SBC POLES ON NORTH SIDE OF CENTRAL TO BE RELOCATED IN PHASES 5 & 6.

STATE	PROJECT NUMBER	FISCAL YEAR	SHEET NUMBER	TOTAL SHEETS
KANSAS	87N-0251-01	2006	11	106



SCALE 1" = 20'  
IRON = •



PAVING IMPROVEMENTS  
CENTRAL STA. 35+00 TO 41+00  
WICHITA, KANSAS

	DESIGN	KWL	SHEET 11 OF 106
	DRAWN	RA	
	REVIEW		
	UTILITY		
Ruggles & Bohm, P.A. Engineering, Surveying, Land Planning 924 North Main (316) 264-8008 Wichita, Kansas 67203 (316) 264-4621 fax www.rbkansas.com E-mail: info@rbkansas.com			
DRAWING FILE	PROJECT NUMBER	DATE	
paving ISHT 63	472-87506	July 10, 2006	