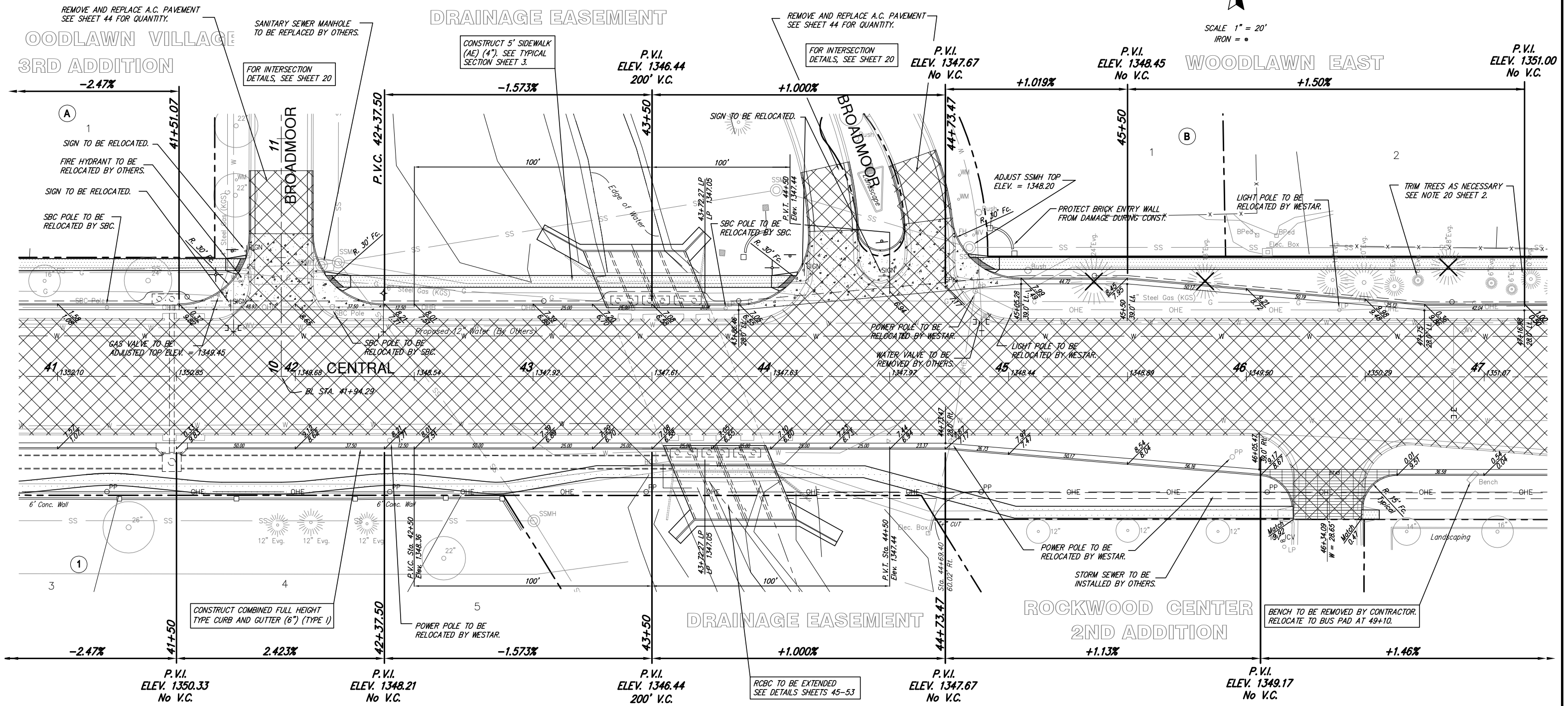


NOTE: SBC POLES ON NORTH SIDE OF CENTRAL TO BE RELOCATED IN PHASES 5 & 6.

| STATE | PROJECT NUMBER | FISCAL YEAR | SHEET NUMBER | TOTAL SHEETS |
|--------|----------------|-------------|--------------|--------------|
| KANSAS | 87N-0251-01 | 2006 | 12 | 106 |



SCALE 1" = 20'
IRON = •



✕ TREE TO BE REMOVED.

PAVING IMPROVEMENTS
CENTRAL STA. 41+00 TO 47+00
WICHITA, KANSAS

| | | | |
|--|---|-------------------------------------|-------------------------------|
| | <p>Ruggles & Bohm, P.A. Engineering, Surveying, Land Planning</p> | | <p>DESIGN KWL</p> |
| | <p>924 North Main Wichita, Kansas 67203 www.rbkansas.com</p> | | <p>DRAWN RA</p> |
| <p>(316) 264-8008 (316) 264-4621 fax E-mail: info@rbkansas.com</p> | | <p>REVIEW</p> | <p>REVISION 12</p> |
| <p>DRAWING FILE paving ISHT 71</p> | | <p>PROJECT NUMBER 472-87506</p> | <p>DATE July 10, 2006</p> |