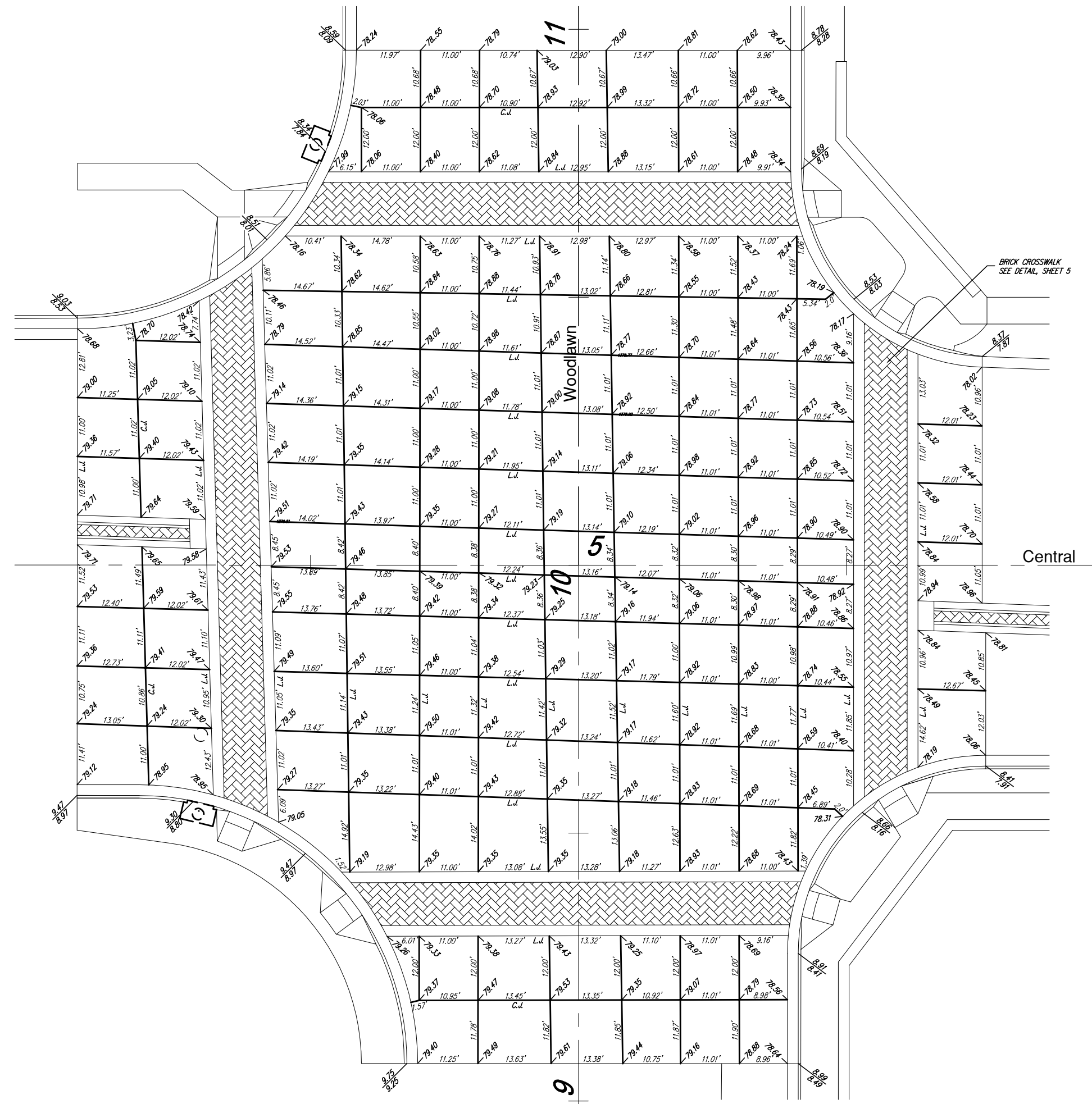
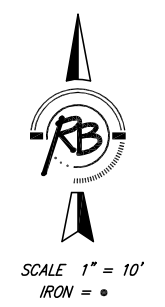


STATE	PROJECT NUMBER	FISCAL YEAR	SHEET NUMBER	TOTAL SHEETS
KANSAS	87N-0251-01	2006	15	106



NOTES:  
SEE SHEET 23 FOR JOINT DETAILS  
INTERSECTION PAVEMENT SHALL BE  
10" (AE)(NRD) CONCRETE

<b>PAVING IMPROVEMENTS INTERSECTION DETAILS WICHITA, KANSAS</b>			
	<b>Ruggles &amp; Bohm, P.A.</b> Engineering, Surveying, Land Planning		
	924 North Main Wichita, Kansas 67203 www.rbkansas.com		
	(316) 264-8008 (316) 264-4621 fax E-mail: info@rbkansas.com		
DESIGN KWL DRAWN RA REVIEW UTILITY	PROJECT NUMBER 472-83506	DATE July 10, 2006	SHEET 15 of 106