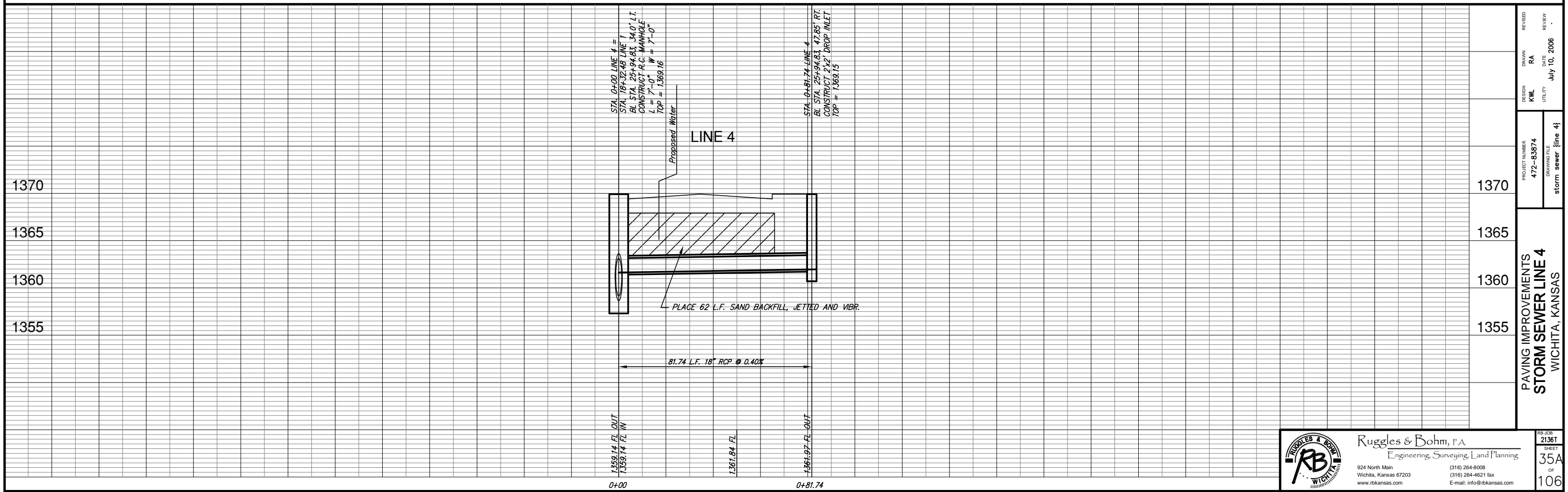


STA. 0+81.74 LINE 4  
BL STA. 25+94.83, 47.85' RT.  
CONSTRUCT 2'x2' DROP INLET  
TOP = 1369.15

STA. 0+00 LINE 4 =  
STA. 18+32.48 LINE 1  
BL STA. 25+94.83, 34.0' LT.  
CONSTRUCT R.C. MANHOLE  
L = 7'-0" W = 7'-0"  
TOP = 1369.16



STA. 0+00 LINE 4 =  
STA. 18+32.48 LINE 1  
BL STA. 25+94.83, 34.0' LT.  
CONSTRUCT R.C. MANHOLE  
L = 7'-0" W = 7'-0"  
TOP = 1369.16

STA. 0+81.74 LINE 4  
BL STA. 25+94.83, 47.85' RT.  
CONSTRUCT 2'x2' DROP INLET  
TOP = 1369.15

LINE 4  
Proposed Water

PLACE 62 L.F. SAND BACKFILL, JETTED AND VIBR.

81.74 L.F. 18" RCP @ 0.40%

1359.14 FL OUT  
1359.14 FL IN

1361.84 FL

1369.14 FL OUT

0+00

0+81.74

PROJECT NUMBER 472-83874	DESIGN KWL	DRAWN RA	REVIEW RA
DRAWING FILE storm sewer {line 4}	UTILITY	DATE July 10, 2006	REVIEW
PAVING IMPROVEMENTS STORM SEWER LINE 4 WICHITA, KANSAS			
RB JOB 2136T	SHEET 35A	OF 106	

**Ruggles & Bohm, P.A.**  
Engineering, Surveying, Land Planning

924 North Main  
Wichita, Kansas 67203  
www.rbkansas.com

(316) 264-8008  
(316) 264-4621 fax  
E-mail: info@rbkansas.com