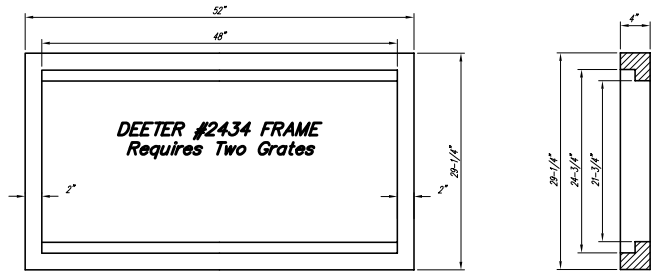
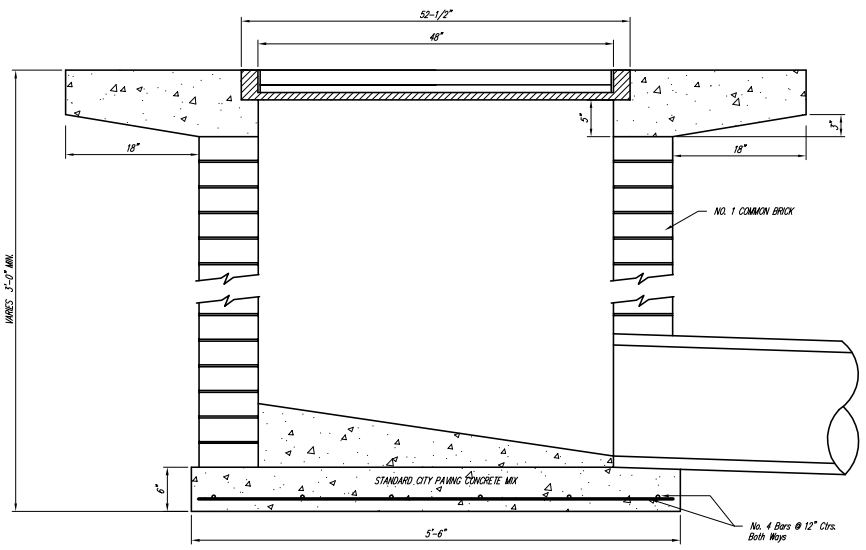
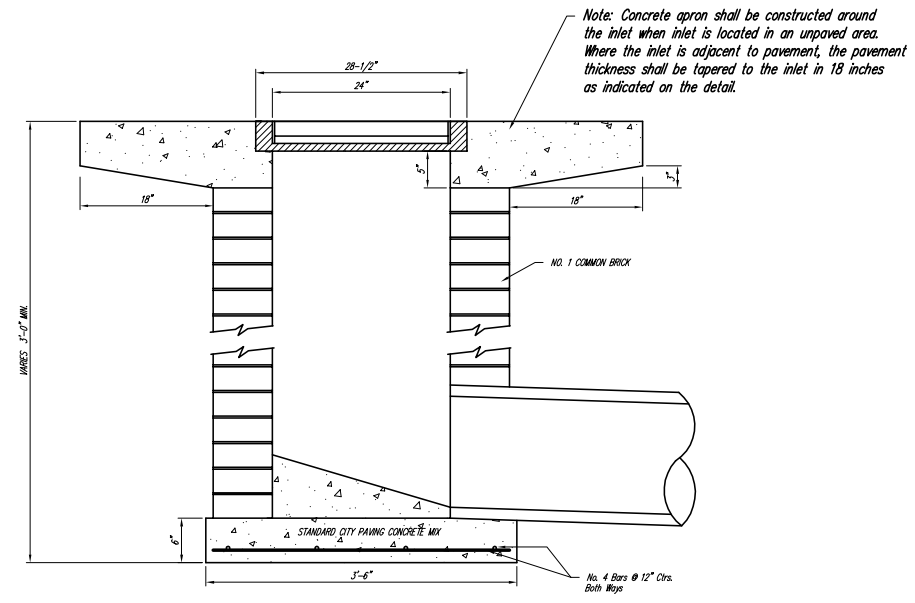
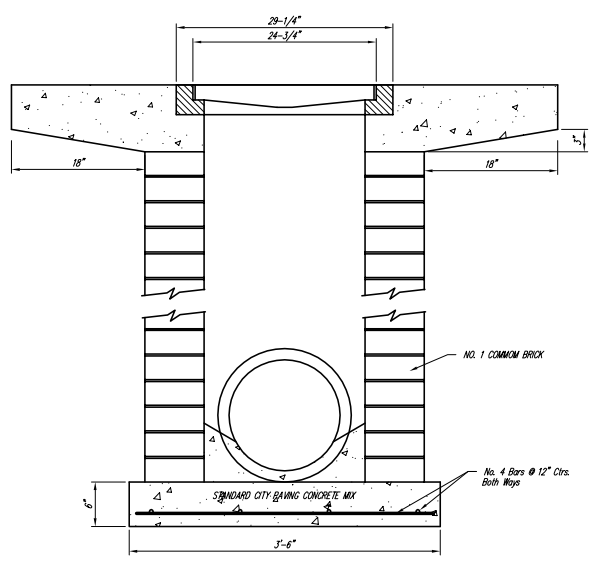


NOTE: Grates shall be imprinted on the top surface with "CITY OF WICHITA" using letters at least 1" in height. Other marking methods may be approved by the engineer.

DEETER #2433 GRATE
24" x 24" Frame and Grate Detail



DEETER #2434 FRAME
Requires Two Grates
Double 24" x 24" Frame Detail



THE CITY OF WICHITA

CITY ENGINEER'S OFFICE
CITY HALL - SEVENTH FLOOR
455 NORTH MAIN STREET
WICHITA, KANSAS 67202
(316) 268-4501
(316) 268-4114 FAX

DROP INLET 2'x2' / 2'x4'	
PROJECT NUMBER 472-83874	OCA # 706872
DATE MAR 96	SHEET 36A OF 106