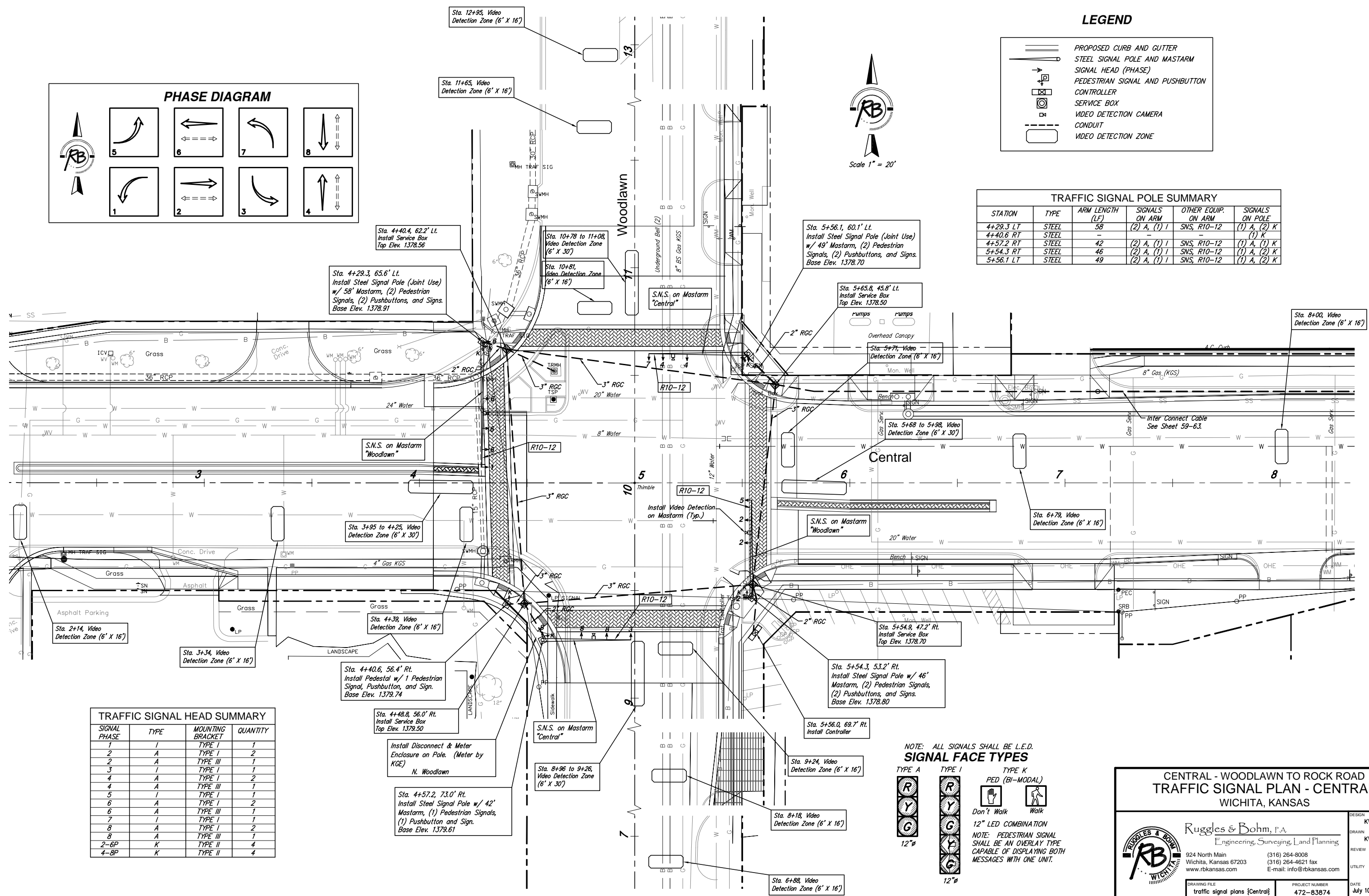


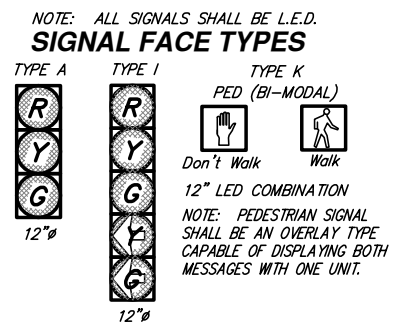
TRAFFIC SIGNAL POLE SUMMARY

STATION	TYPE	ARM LENGTH (LF)	SIGNALS ON ARM	OTHER EQUIP. ON ARM	SIGNALS ON POLE
4+29.3 LT	STEEL	58	(2) A, (1) I	SNS, R10-12	(1) A, (2) K
4+40.6 RT	STEEL	-	-	-	(1) K
4+57.2 RT	STEEL	42	(2) A, (1) I	SNS, R10-12	(1) A, (1) K
5+54.3 RT	STEEL	46	(2) A, (1) I	SNS, R10-12	(1) A, (2) K
5+56.1 LT	STEEL	49	(2) A, (1) I	SNS, R10-12	(1) A, (2) K



TRAFFIC SIGNAL HEAD SUMMARY

SIGNAL PHASE	TYPE	MOUNTING BRACKET	QUANTITY
1	I	TYPE I	1
2	A	TYPE I	2
2	A	TYPE III	1
3	I	TYPE I	1
4	A	TYPE I	2
4	A	TYPE III	1
5	I	TYPE I	1
6	A	TYPE I	2
6	A	TYPE III	1
7	I	TYPE I	1
8	A	TYPE I	2
8	A	TYPE III	1
2-6P	K	TYPE II	4
4-8P	K	TYPE II	4



CENTRAL - WOODLAWN TO ROCK ROAD TRAFFIC SIGNAL PLAN - CENTRAL WICHITA, KANSAS

Ruggles & Bohm, P.A.
Engineering, Surveying, Land Planning

924 North Main
Wichita, Kansas 67203
www.rbkansas.com

(316) 264-8008
(316) 264-4621 fax
E-mail: info@rbkansas.com

DESIGN: KWL
DRAWN: KWL
REVIEW: KWL
UTILITY: KWL
DATE: July 10, 2006

PROJECT NUMBER: 472-83874

SHEET: 56 OF 106