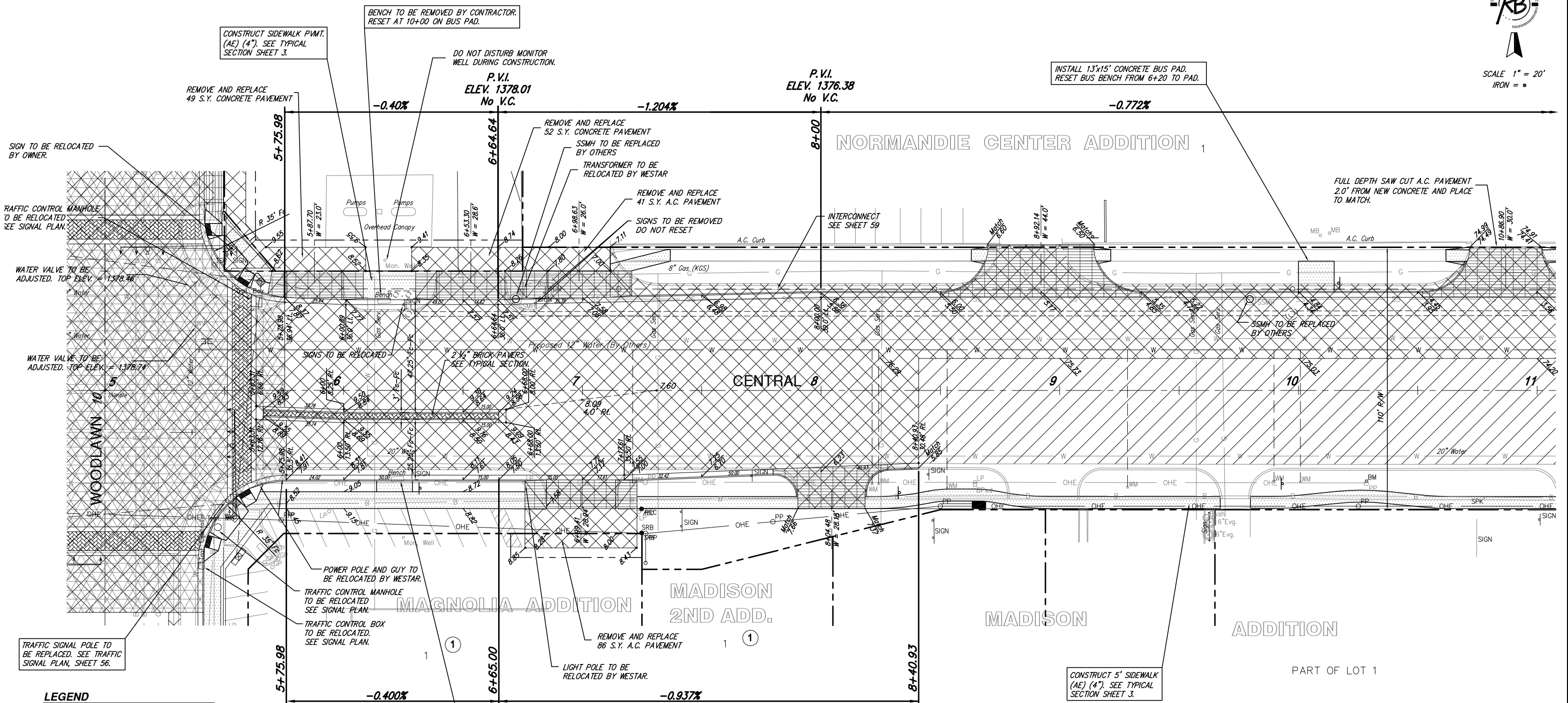


NOTE: SBC POLES ON NORTH SIDE OF CENTRAL TO BE RELOCATED IN PHASES 5 & 6.

STATE	PROJECT NUMBER	FISCAL YEAR	SHEET NUMBER	TOTAL SHEETS
KANSAS	87N-0251-01	2006	6	106



SCALE 1" = 20'
IRON = ●



LEGEND

	Pavement to be removed
	Concrete Construction 8" Reinforced
	Concrete Sidewalk Construction 4"
	Concrete Pavement (10")(AE)(NDRJ)
	Crushed Stone Subgrade (6") - Geogrid Reinforcement (for base)
	Concrete Pavement (8")(AE)(Plain)
	Brick Paver Surfacing
	5" Unreinf. Concrete
	6" Reinf. Rock Base
	2" Mill and Overlay with A.C. Pavement

ALL WATER METERS TO BE RELOCATED WITH WATER PROJECT.

**PAVING IMPROVEMENTS
CENTRAL STA. 5+00 TO 11+00
WICHITA, KANSAS**

Ruggles & Bohm, P.A.
Engineering, Surveying, Land Planning

924 North Main
Wichita, Kansas 67203
www.rbkansas.com

(316) 264-8008
(316) 264-4621 fax
E-mail: info@rbkansas.com

DESIGN: KWL
DRAWN: RA
REVIEW: [blank]
UTILITY: [blank]

SHEET: 6 OF 106

DATE: July 10, 2006

DRAWING FILE: paving {SHT 1} PROJECT NUMBER: 472-87506