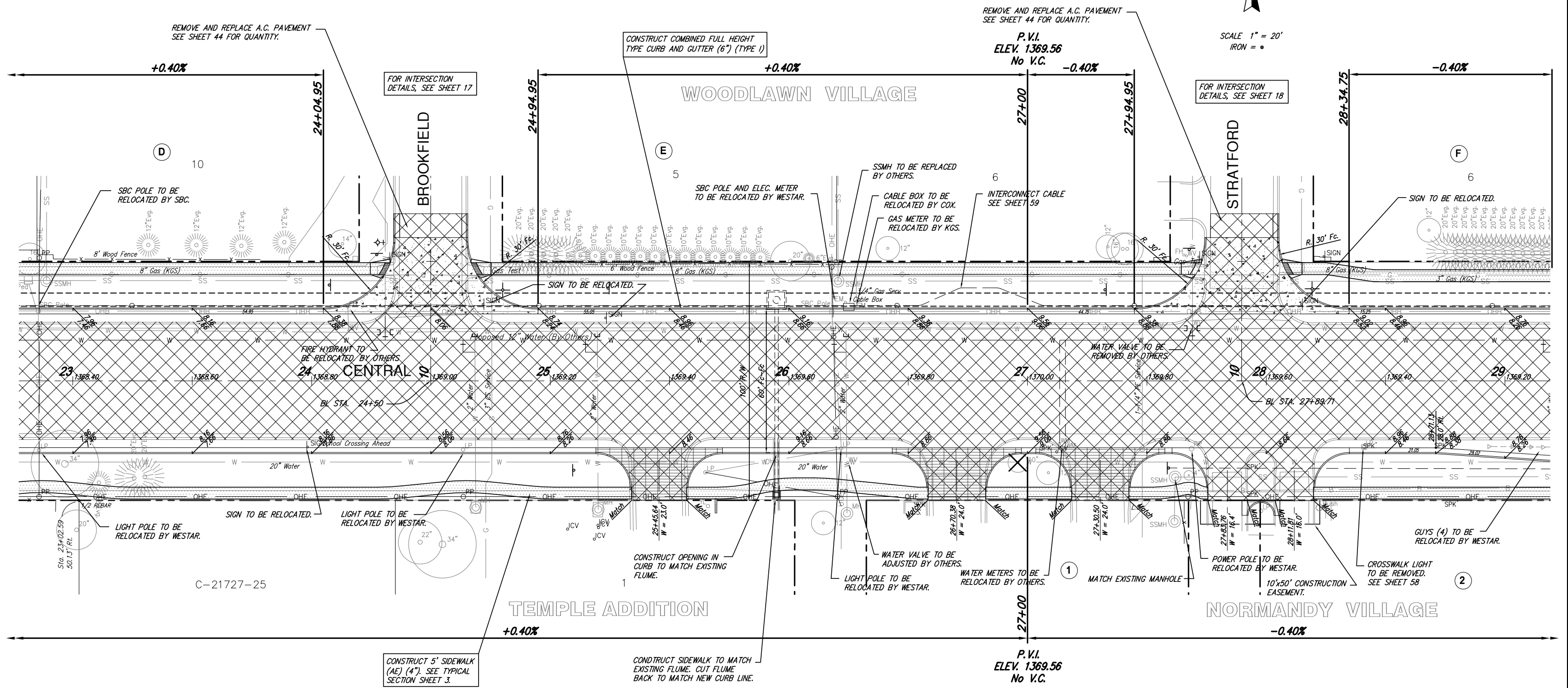


NOTE: SBC POLES ON NORTH SIDE OF CENTRAL TO BE RELOCATED IN PHASES 5 & 6.

STATE	PROJECT NUMBER	FISCAL YEAR	SHEET NUMBER	TOTAL SHEETS
KANSAS	87N-0251-01	2006	9	106



SCALE 1" = 20'
IRON = •



X TREE TO BE REMOVED.

PAVING IMPROVEMENTS
CENTRAL STA. 23+00 TO 29+00
WICHITA, KANSAS

Ruggles & Bohm, P.A.
Engineering, Surveying, Land Planning
924 North Main
Wichita, Kansas 67203
www.rbkansas.com

DESIGN: KWL
DRAWN: RA
REVIEW: [blank]
UTILITY: [blank]

(316) 264-8008
(316) 264-4621 fax
E-mail: info@rbkansas.com

DRAWING FILE: paving ISHT 4	PROJECT NUMBER: 472-87506	DATE: July 10, 2006	106
-----------------------------	---------------------------	---------------------	------------