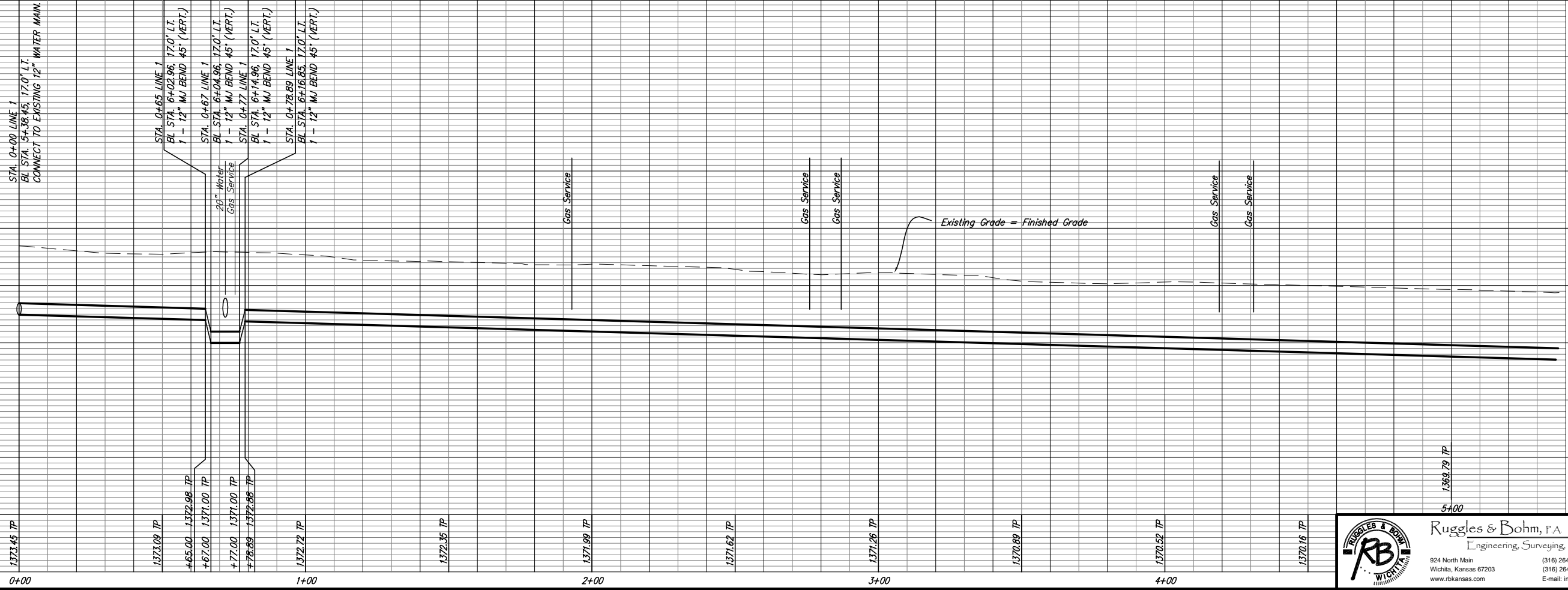


SCALE 1" = 20'
IRON = ●



STA. 0+00 LINE 1
BL STA. 5+38.45, 17.0' LT.
CONNECT TO EXISTING 12" WATER MAIN.
#1 - 12"x12" TAPPING SLEEVE
#1 - 12" TAPPING VALVE
1 - 8" VALVE BOX TOP ELEV. = 1378.82
*FURNISHED AND INSTALLED BY DEPT. OF WATER AND SEWER.

REMOVE 6 L.F. 8" PIPE
INSTALL 2 - 8" MJ CAPS
ABANDON PIPE EAST.

STA. 0+65 LINE 1
BL STA. 6+02.96, 17.0' LT.
1 - 12" MJ BEND 45° (VERT.)
2.0 L.F. 12" DI CL PIPE
STA. 0+67 LINE 1
BL STA. 6+04.96, 17.0' LT.
1 - 12" MJ BEND 45° (VERT.)
10.0 L.F. 12" DI CL PIPE
STA. 0+77 LINE 1
BL STA. 6+14.96, 17.0' LT.
1 - 12" MJ BEND 45° (VERT.)
1.89 L.F. 12" DI CL PIPE
STA. 0+78.89 LINE 1
BL STA. 6+16.85, 17.0' LT.
1 - 12" MJ BEND 45° (VERT.)

BL STA. 5+37.96, 17.50' RT.
CONNECT TO EXISTING 12" WATER MAIN.
#1 - 12"x8" TAPPING SLEEVE
#1 - 12" TAPPING VALVE
1 - 8" VALVE BOX TOP ELEV. = 1379.03
20 L.F. 8" PIPE (W)
1 - 8" MJ CAP
*FURNISHED AND INSTALLED BY DEPT. OF WATER AND SEWER.

1373.45 TP
1373.09 TP
+65.00 - 1372.98 TP
+67.00 1371.00 TP
+77.00 1371.00 TP
+78.89 - 1372.88 TP
1372.72 TP
1372.35 TP
1371.99 TP
1371.62 TP
1371.26 TP
1370.89 TP
1370.52 TP
1370.16 TP

PROJECT NUMBER 448-8883	DESIGN KWL	DRAWN RA	REVIEW RA
DRAWING FILE water (sheet 3)	UTILITY	DATE July 11, 2006	REVIEW

12" Water Main Replacement
WICHITA, KANSAS

1380
1375
1370
1365

5+00
1369.79 TP