

STA. 36+02.95 LINE 1
 BL STA. 41+41.05, 17.0' LT.
 1 - 12" MJ BEND 45° (VERT.)
 2.05 L.F. 12" DI CL PIPE
 STA. 36+05 LINE 1
 BL STA. 41+43.10, 17.0' LT.
 1 - 12" MJ BEND 45° (VERT.)
 10.0 L.F. 12" DI CL PIPE
 STA. 36+15 LINE 1
 BL STA. 41+53.10, 17.0' LT.
 1 - 12" MJ BEND 45° (VERT.)
 1.95 L.F. 12" DI CL PIPE
 STA. 36+16.95 LINE 1
 BL STA. 41+55.05, 17.0' LT.
 1 - 12" MJ BEND 45° (VERT.)

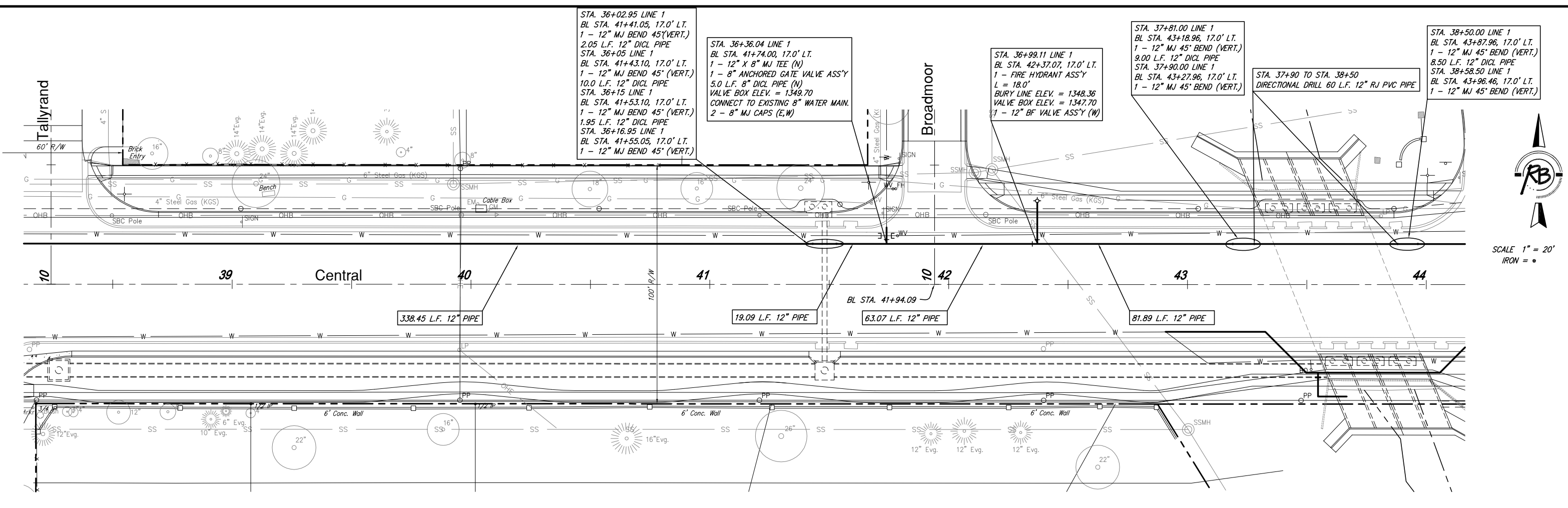
STA. 36+36.04 LINE 1
 BL STA. 41+74.00, 17.0' LT.
 1 - 12" X 8" MJ TEE (N)
 1 - 8" ANCHORED GATE VALVE ASS'Y
 5.0 L.F. 8" DI CL PIPE (N)
 VALVE BOX ELEV. = 1349.70
 CONNECT TO EXISTING 8" WATER MAIN.
 2 - 8" MJ CAPS (E,W)

STA. 36+99.11 LINE 1
 BL STA. 42+37.07, 17.0' LT.
 1 - FIRE HYDRANT ASS'Y
 L = 18.0'
 BURY LINE ELEV. = 1348.36
 VALVE BOX ELEV. = 1347.70
 1 - 12" BF VALVE ASS'Y (W)

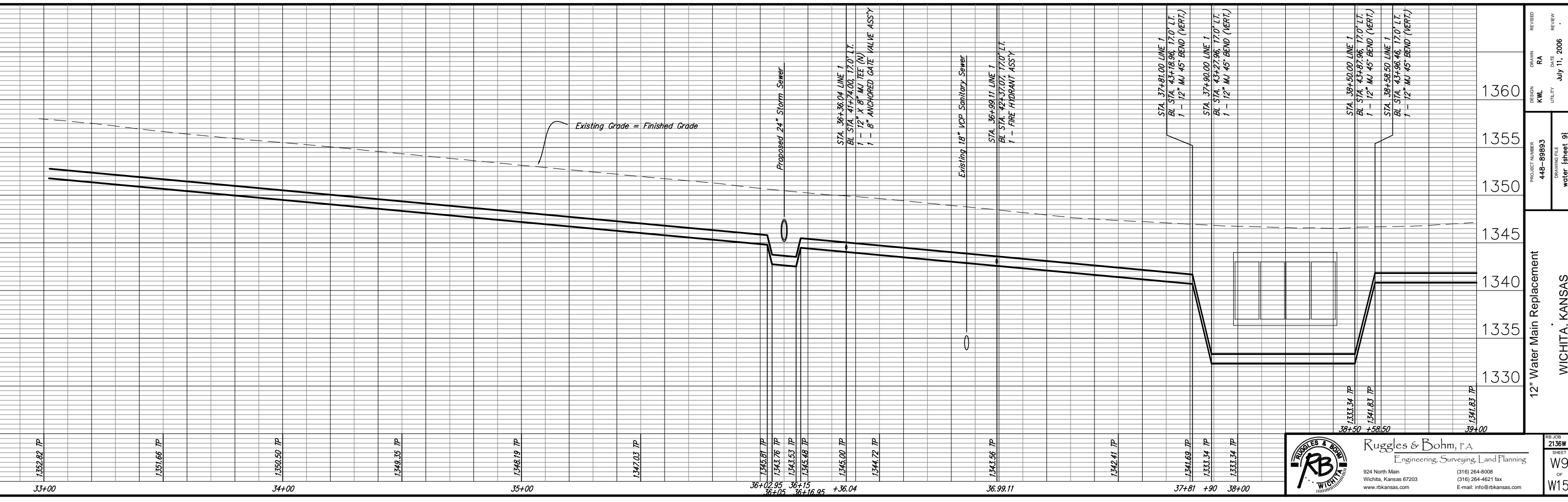
STA. 37+81.00 LINE 1
 BL STA. 43+18.96, 17.0' LT.
 1 - 12" MJ 45° BEND (VERT.)
 9.00 L.F. 12" DI CL PIPE
 STA. 37+90.00 LINE 1
 BL STA. 43+27.96, 17.0' LT.
 1 - 12" MJ 45° BEND (VERT.)

STA. 37+90 TO STA. 38+50
 DIRECTIONAL DRILL 60 L.F. 12" RJ PVC PIPE

STA. 38+50.00 LINE 1
 BL STA. 43+87.96, 17.0' LT.
 1 - 12" MJ 45° BEND (VERT.)
 8.50 L.F. 12" DI CL PIPE
 STA. 38+58.50 LINE 1
 BL STA. 43+96.46, 17.0' LT.
 1 - 12" MJ 45° BEND (VERT.)



SCALE 1" = 20'
 IRON = ●



DESIGN	KWL	RA	REVIEW	
PROJECT NUMBER	448-88893	UTILITY	DATE	July 11, 2006
DRAWING FILE	water (sheet 9)			
12" Water Main Replacement		WICHITA, KANSAS		
PROJECT NUMBER	448-88893	DESIGN	KWL	RA
DRAWING FILE	water (sheet 9)	UTILITY	DATE	July 11, 2006
REVISION				

Ruggles & Bohm, P.A.
 Engineering, Surveying, Land Planning
 924 North Main
 Wichita, Kansas 67203
 www.rbkansas.com
 (316) 264-8008
 (316) 264-4621 fax
 E-mail: info@rbkansas.com

RB JOB 2136W
 SHEET W9
 OF W15