

STATE OF KANSAS  
DEPARTMENT OF TRANSPORTATION



PLAN AND PROFILE OF PROPOSED  
11TH STREET BRIDGE OVER  
THE WICHITA DRAINAGE CANAL

FEDERAL AID PROJECT  
CITY OF WICHITA PROJECT NO. 472-84396  
INDEX CODE 715710  
SEDGWICK COUNTY  
CITY OF WICHITA

STATE	PROJECT NO.	YEAR	SHEET NO.	TOTAL SHEETS
KANSAS	87 N-0187-01	2006	1	47

F.A. NO. STP N018 (701)  
BRIDGE  
GRADING  
PAVEMENT MARKING  
SEEDING  
SIGNING

INDEX OF SHEETS

SHEET NO.	DESCRIPTION
1	Title Sheet
2	Typical Section
3-4	Plan and Profile
5-11	Pavement Details
12	Reinforced Concrete Riprap
13-25	Bridge No. 53040087WDC150
26	Standard Pile Details
27	Bridge Excavation
28	Supports and Spacers for Reinforcing Steel
29	Summary of Quantity
30	Erosion Control Plan
31-37	Temporary Project Water Pollution Control
38	Seeding
39-41	Signing and Pavement Marking
42-46	Traffic Control
47	Cross Sections

BY	DATE
MKEC	5/2000
DPG, USB	5/2005
KJS, JRA	5/2005
BRUCE FILIPPI	5/2005

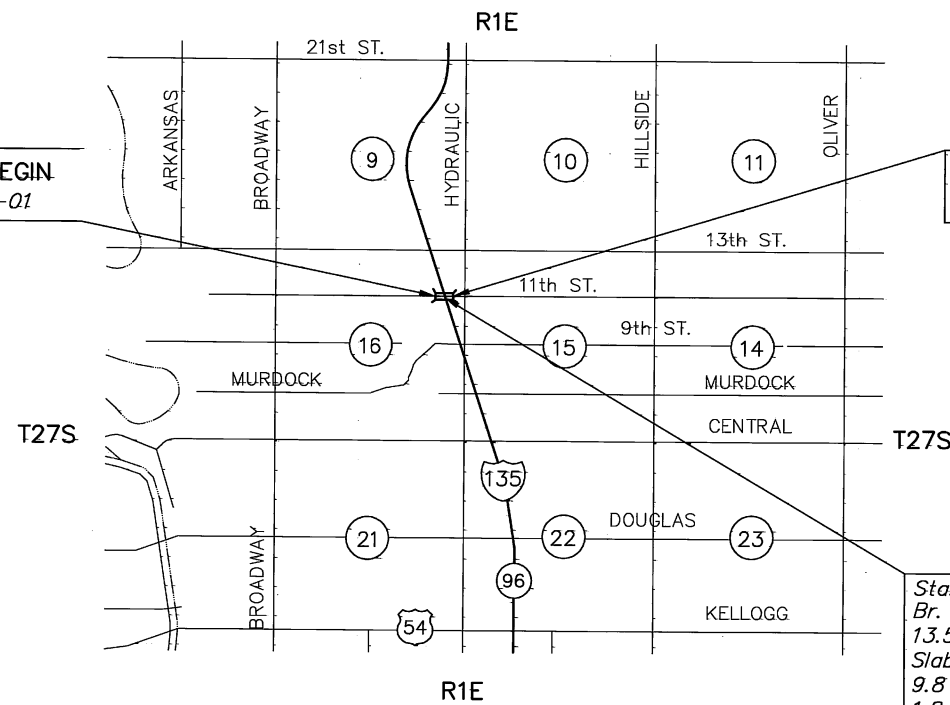
SURVEYED BY MKEC 5/2000  
 PLOTTED BY DPG, USB 5/2005  
 DESIGNED BY KJS, JRA 5/2005  
 DRAWN BY BRUCE FILIPPI 5/2005  
 G:\CIVIL\98169\05693\TITLE\05693T11.DWG 2/15/2006 1:11:13 PM CST

DESIGN DESIGNATION

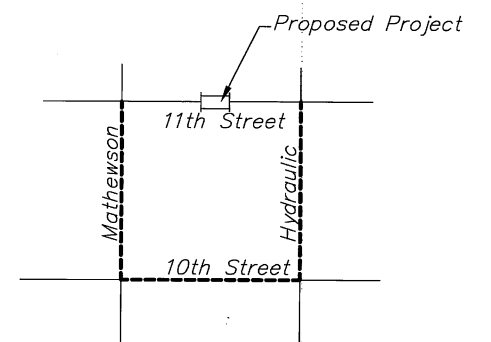
AADT (2005) = 1492  
 AADT (2030) = 1500  
 DHV = 179  
 D = 50%  
 T = 2%  
 V = 50 km/h  
 C OF A = NONE  
 CLEAR ZONE = 0.5 m

CONVENTIONAL SIGNS

COUNTY LINE	CENTER LINE OF PROJECT	
CITY LIMITS	TERRACE	
STATE OR NATIONAL LINE	CULVERTS	
TOWNSHIP, SECTION or GRANT LINE	DROP INLET & STORM SEWER	
PROPERTY LINE	ACCESS CONTROL	
HIGHWAY FENCE	POWER POLE	
EXISTING FENCE	TELEPHONE POLE	
GUARD FENCE	MARSH	
CONSTRUCTION LIMITS	HEDGE	
RIGHT OF WAY LINE	TREES	
TRAVELED WAY	PROFILE ELEVATION	
RAILROADS	STREAM OR CREEK	



SCALE: 1:30 000



DETOUR SKETCH

NOTE:

TRAFFIC TO BE CARRIED ON DETOUR  
 AS SHOWN ON SKETCH.  
  
 DETOUR TO BE SIGNED AND  
 MAINTAINED BY THE CONTRACTOR.

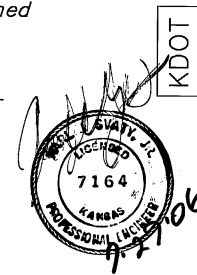
Sta. 10+034.216 END  
Proj. No. 87 N-0187-01

Sta. 10+000.00  
 Br. No. 53040087WDC150  
 13.5-18-13.5 m R.C. Haunched  
 Slab Spans 13' Skew Lt.  
 9.8 m Roadway with  
 1.8 m Walkway Lt. & Rt.

PREPARED AND SUBMITTED BY  
 MKEC ENGINEERING CONSULTANTS, INC.  
 WICHITA, KANSAS

All dimensions shown, without a  
 SI suffix, are in millimeters. All  
 elevations shown are in meters.

GROSS LENGTH OF PROJECT	68.432 m
EXCEPTIONS	NONE
ADDITIONS	NONE
NET LENGTH OF PROJECT	68.432 m
NET LENGTH OF BRIDGES	45.770 m
NET LENGTH OF ROAD	22.662 m



RECOM. FOR APPROVAL-DATE

RECOM. FOR APPROVAL-DATE

CITY OFFICIAL

RECOM. FOR APPROVAL-DATE

CHIEF, BUREAU OF LOCAL PROJECTS  
KANSAS DEPARTMENT OF TRANSPORTATION

APPROVED-DATE

STATE TRANSPORTATION ENGINEER  
KANSAS DEPARTMENT OF TRANSPORTATION