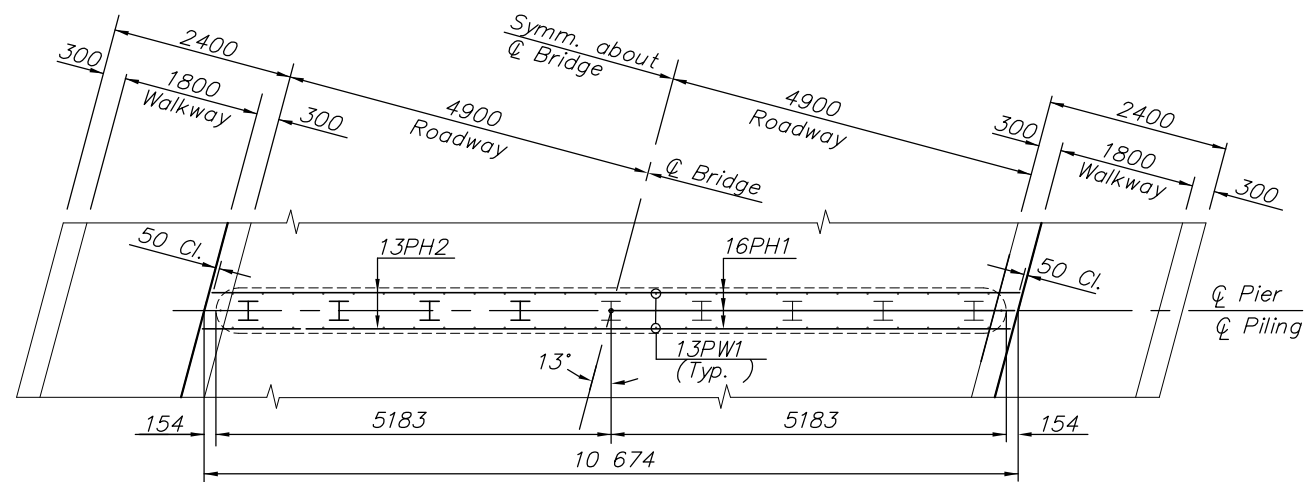
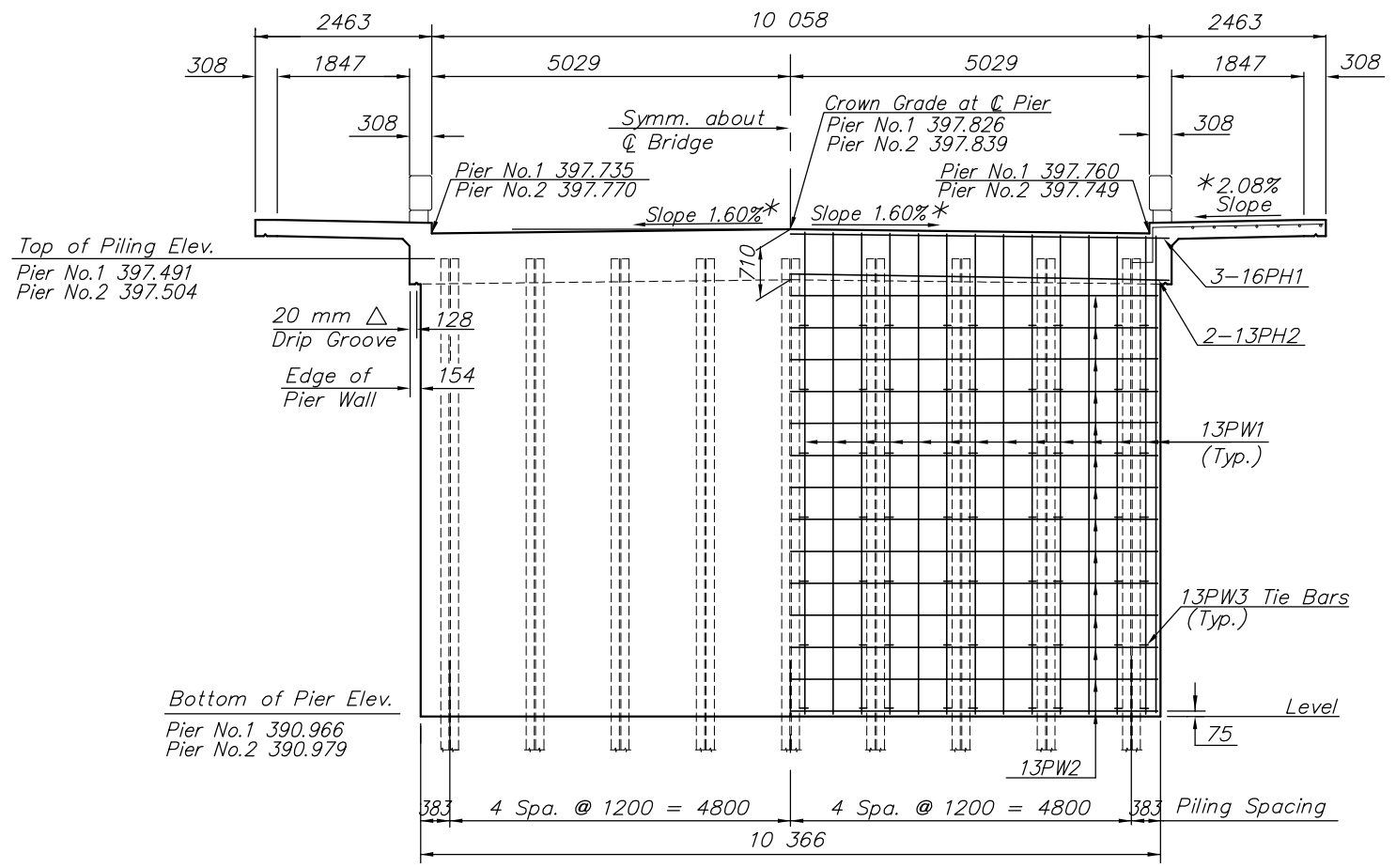


STATE	PROJECT NO.	YEAR	SHEET NO.	TOTAL SHEETS
KANSAS	87 N-0187-01	2006	18	47

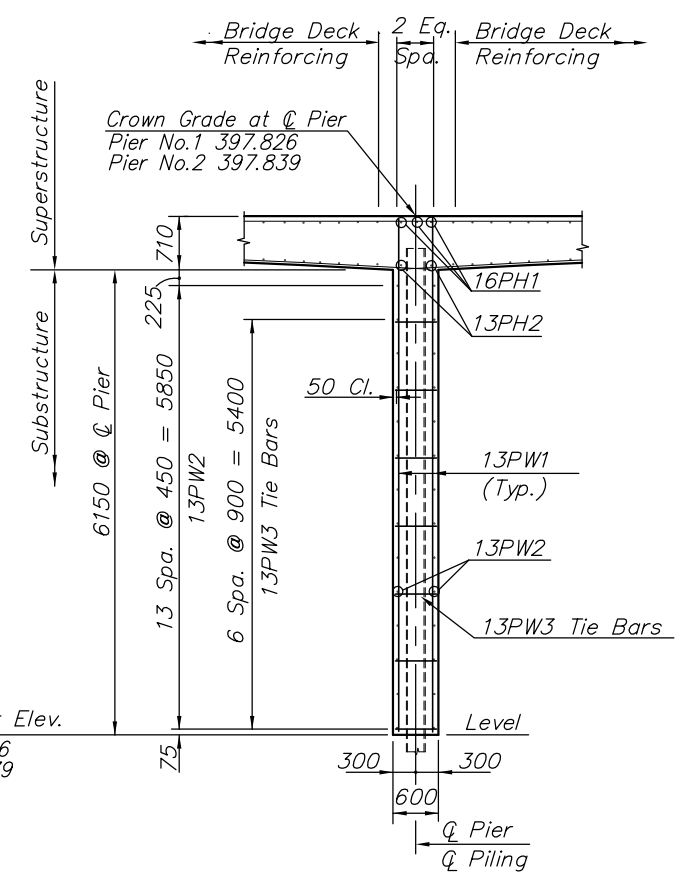


Reinforcing Shown in Bottom of Pier Head
PLAN
 Reinforcing Shown in Top of Pier Head

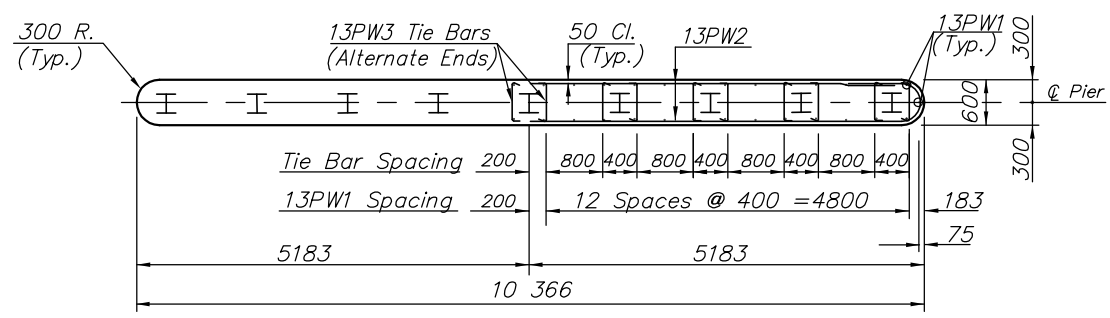


ELEVATION
 (Along Q Pier)

* Slopes are normal to Q Bridge



TYPICAL SECTION THRU PIER



PIER WEB WALL PLAN

PIER PILE LOADING

<i>Design</i>	<i>Allowable</i>
Group I Loading 491 kN/Pile	500 kN/Pile

G:\CIVIL\98169\05693\BRIDGE\05693PR.DWG 02/15/2006 02:30:36 PM CST

KANSAS DEPARTMENT OF TRANSPORTATION
 BR. NO. 53040087WDC150 STA. 10+00.00

PIER DETAILS

PROJECT NO. 87 N-0187-01 SEDGWICK CO.

M K E C ENGINEERING CONSULTANTS, INC.
 WICHITA, KANSAS

DESIGNED BY: KJS	CHECKED BY: KJS
DRAWN BY: DPG/JSB	DATE: DEC. 2005 SHEET 18 OF 47