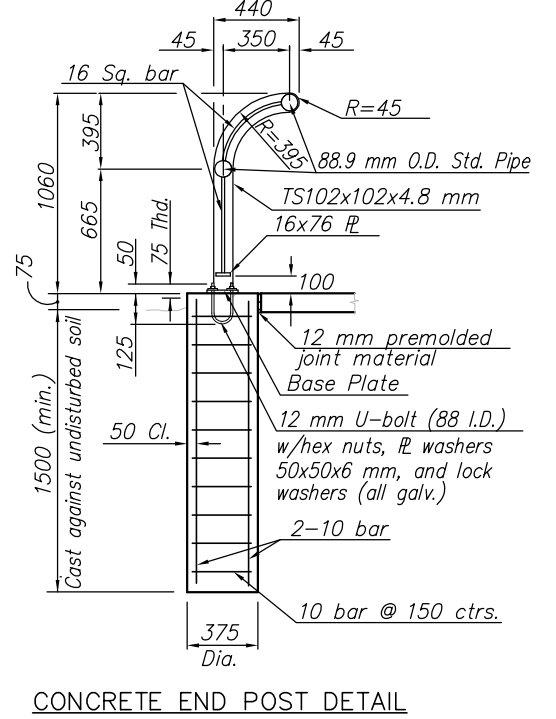
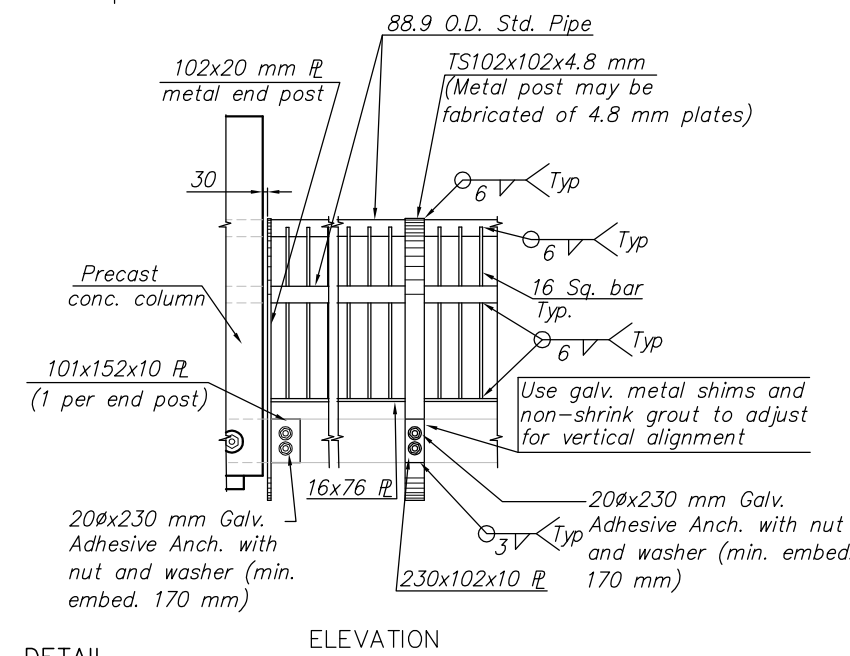
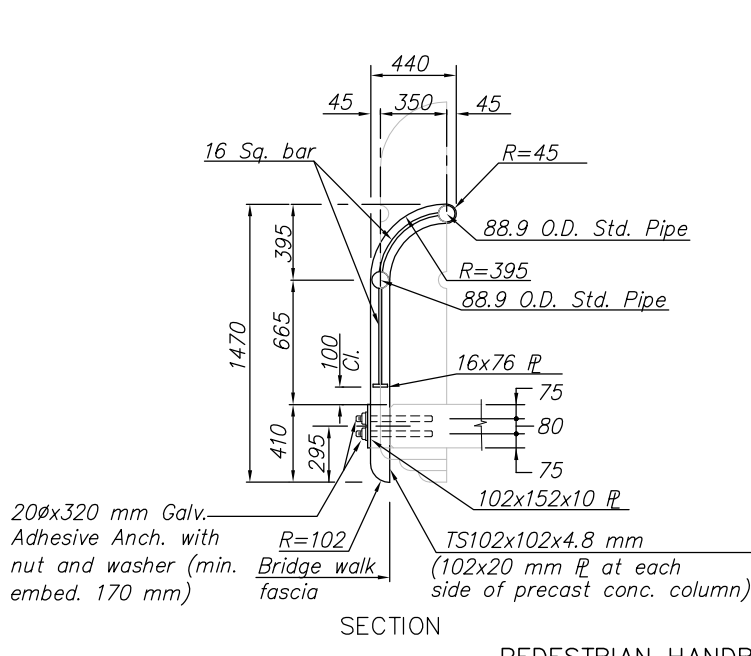
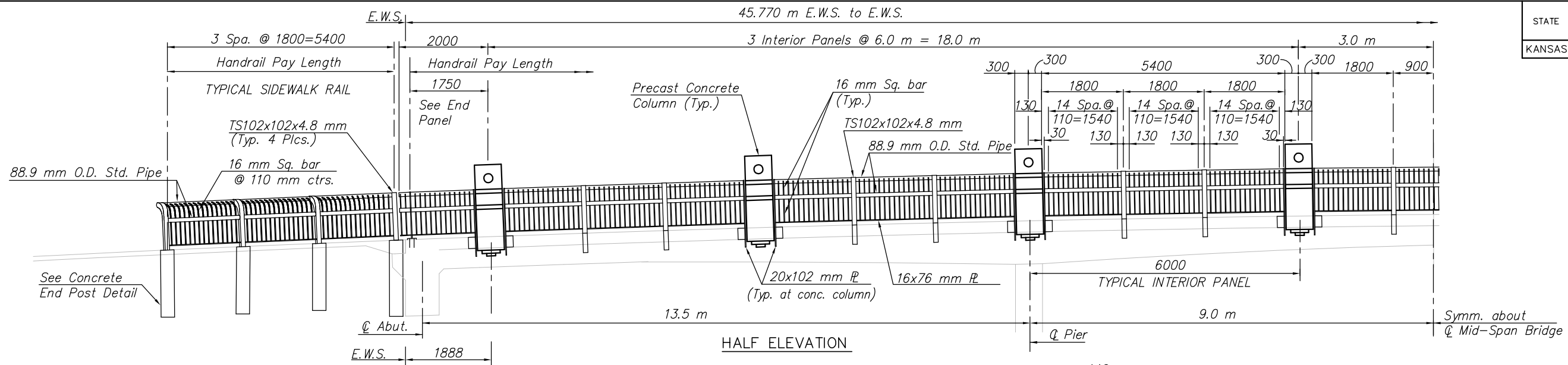
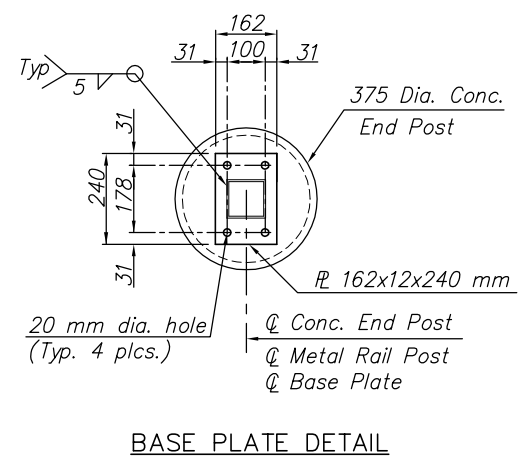
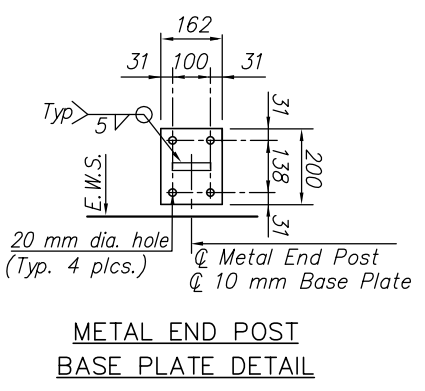
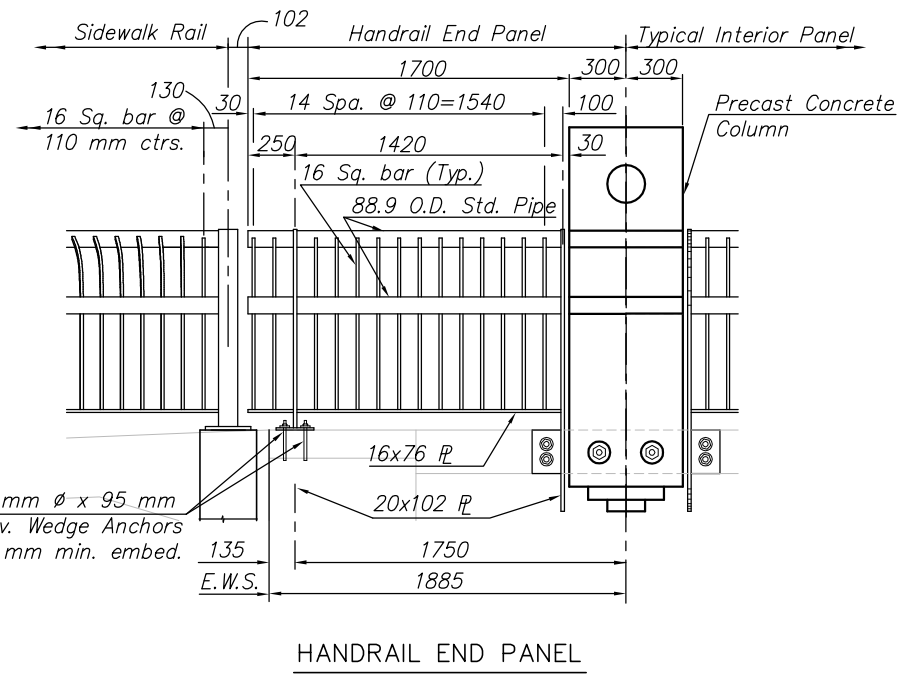


STATE	PROJECT NO.	YEAR	SHEET NO.	TOTAL SHEETS
KANSAS	87 N-0187-01	2006	22	47



NOTES:

- The plate and bar rail members shall conform to ASTM A36M. The tubular rail members shall conform to ASTM A500M Gr. B.
- Rail shall be fabricated in lengths to include a minimum of two and a maximum of three panels. Shims may be used between concrete and base plates of posts.
- All parts of Handrail shall be painted. The primer coat shall conform to the inorganic Zinc System. Surface preparation shall be in accordance with that for structural steel. The finish coat shall be Themec BB12 (Michael Rush, Tel: 316-686-4822), "Iris", applied as per manufactures recommendation. The Contractor shall submit color chart for approval by the City.
- Grade 31 Concrete (AE) shall be used for concrete end post. All reinforcing shall conform to ASTM A615M Grade 420.
- All material, equipment and labor necessary for the installation of the bridge handrail shall be subsidiary to the bid item.



G:\CIVIL\98169\05693\BRIDGE\05693PED.DWG 02/15/2006 02:43:34 PM CST

KANSAS DEPARTMENT OF TRANSPORTATION
BR. NO. 53040087WDC150 STA. 10+00.00

PEDESTRIAN HANDRAIL
PROJECT NO. 87 N-0187-01 SEDGWICK CO.

M K E C ENGINEERING CONSULTANTS, INC.
WICHITA, KANSAS

DESIGNED BY: KJS	CHECKED BY: KJS
DRAWN BY: DPG/JSB	DATE: DEC. 2005 SHEET 22 OF 47