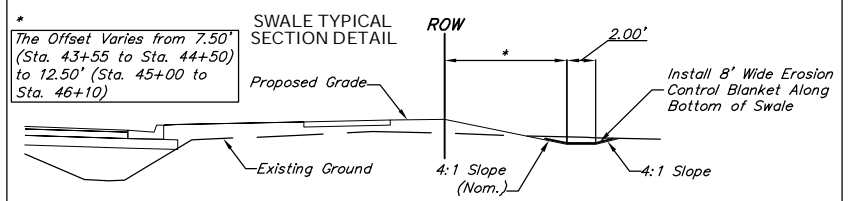
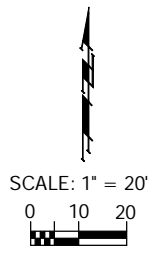
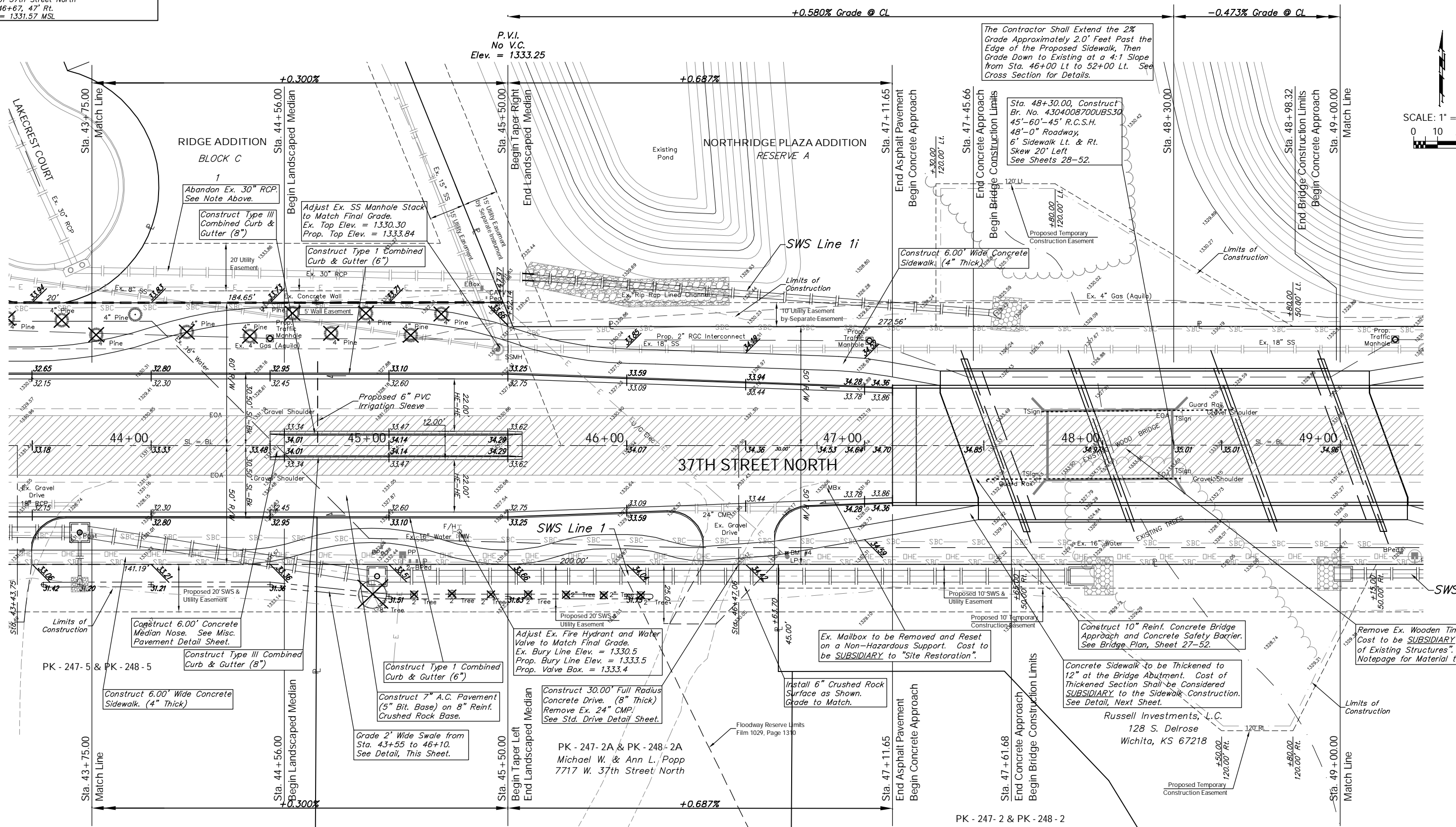


BENCHMARK:
 BM #4 - Railroad Spike in the North Face of the First
 Power/Light Pole West of Bridge on the South
 Side of 37th Street North
 Sta. 46+67, 47' Rt.
 Elev. = 1331.57 MSL

Replace Ex. Sprinkler Systems from
 Sta. 26+50 Lt. to Sta. 47+00 Lt.

P.V.I. @ CL
 300.00' V.C.
 Elev. = 1335.40

R/W	STATE	PROJECT NO.	FISCAL YEAR	SHEET NO.	TOTAL SHEETS
7	KANSAS	87 N-0346-01	2006	19	146



P.V.I.
 No V.C.
 Elev. = 1333.25

Note:
 Trees/Shrubs to be removed are marked thus:

Note:
 Pavement, Sidewalks, and Etc. To Be Removed Are Indicated By:

The Contractor Shall Extend the 2% Grade to Approximately 50 Feet South of the Section Line to Maintain a Minimum of 2' Cover Over the Proposed RCP, Then Grade Down to Existing at a 4:1 Slope from Sta. 47+00 Rt. to 52+00 Rt. See Cross Section for Details.

Drawing File: F:\37th Pave\37th Land\dwg\37th Base.dwg (Pai06)
 Project No. 0401E791 CAPITAL IMPROVEMENT PROJECT
37TH STREET NORTH PAVING
 Sta. 43+75.00 to Sta. 49+00.00
 37TH STREET NORTH - TYLER ROAD TO RIDGE ROAD