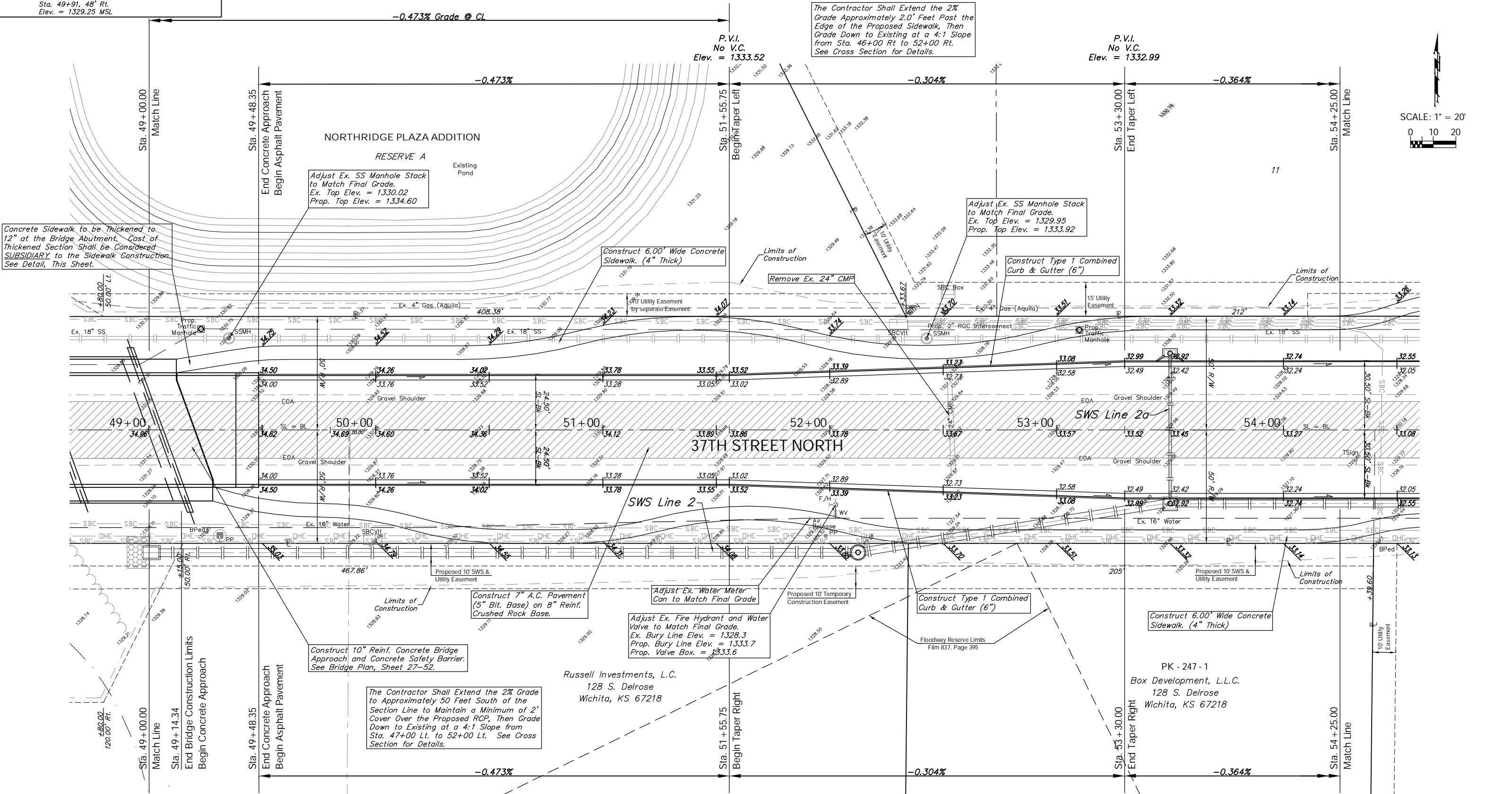


FHW A NO.	STATE	PROJECT NO.	FISCAL YEAR	SHEET NO.	TOTAL SHEETS
7	KANSAS	87 N-0346-01	2006	20	146

BENCHMARK:  
 BM #3 - "I" Cut in the Concrete Footing of a Steel Fence  
 Corner Post South of 37th Street North  
 Sta. 49+91, 48' Rt.  
 Elev. = 1329.25 MSL

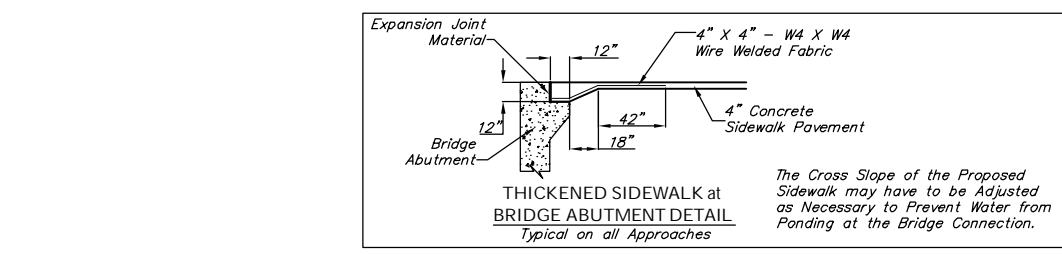


The Contractor Shall Extend the 2% Grade Approximately 2.0' Feet Past the Edge of the Proposed Sidewalk, Then Grade Down to Existing at a 4:1 Slope from Sta. 46+00 Rt to 52+00 Rt. See Cross Section for Details.

Adjust Ex. SS Manhole Stack to Match Final Grade.  
 Ex. Top Elev. = 1330.02  
 Prop. Top Elev. = 1334.60

Adjust Ex. SS Manhole Stack to Match Final Grade.  
 Ex. Top Elev. = 1329.95  
 Prop. Top Elev. = 1333.92

Concrete Sidewalk to be Thickened to 12" at the Bridge Abutment. Cost of Thickened Section Shall be Considered SUBSIDIARY to the Sidewalk Construction. See Detail, This Sheet.



Note:  
 Pavement, Sidewalks, and Etc. To Be Removed Are Indicated By:

Drawing File: F:\37th Pave\37th Land\dwg\37th Base.dwg (Pai09)  
 Project No. 04-01-E791 CAPITAL IMPROVEMENT PROJECT  
**37TH STREET NORTH PAVING**  
 Sta. 49+00.00 to Sta. 54+25.00  
 37TH STREET NORTH - TYLER ROAD to RIDGE ROAD

**Baughman Company, P.A.**  
 315 Ellis St. Wichita, KS 67211 P 316-262-7271 F 316-262-0149  
 ENGINEERING | SURVEYING | PLANNING | LANDSCAPE ARCHITECTURE

September 2006  
 SHEET 20 OF 146