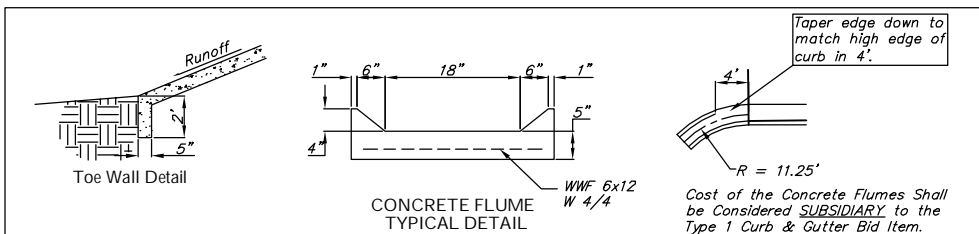
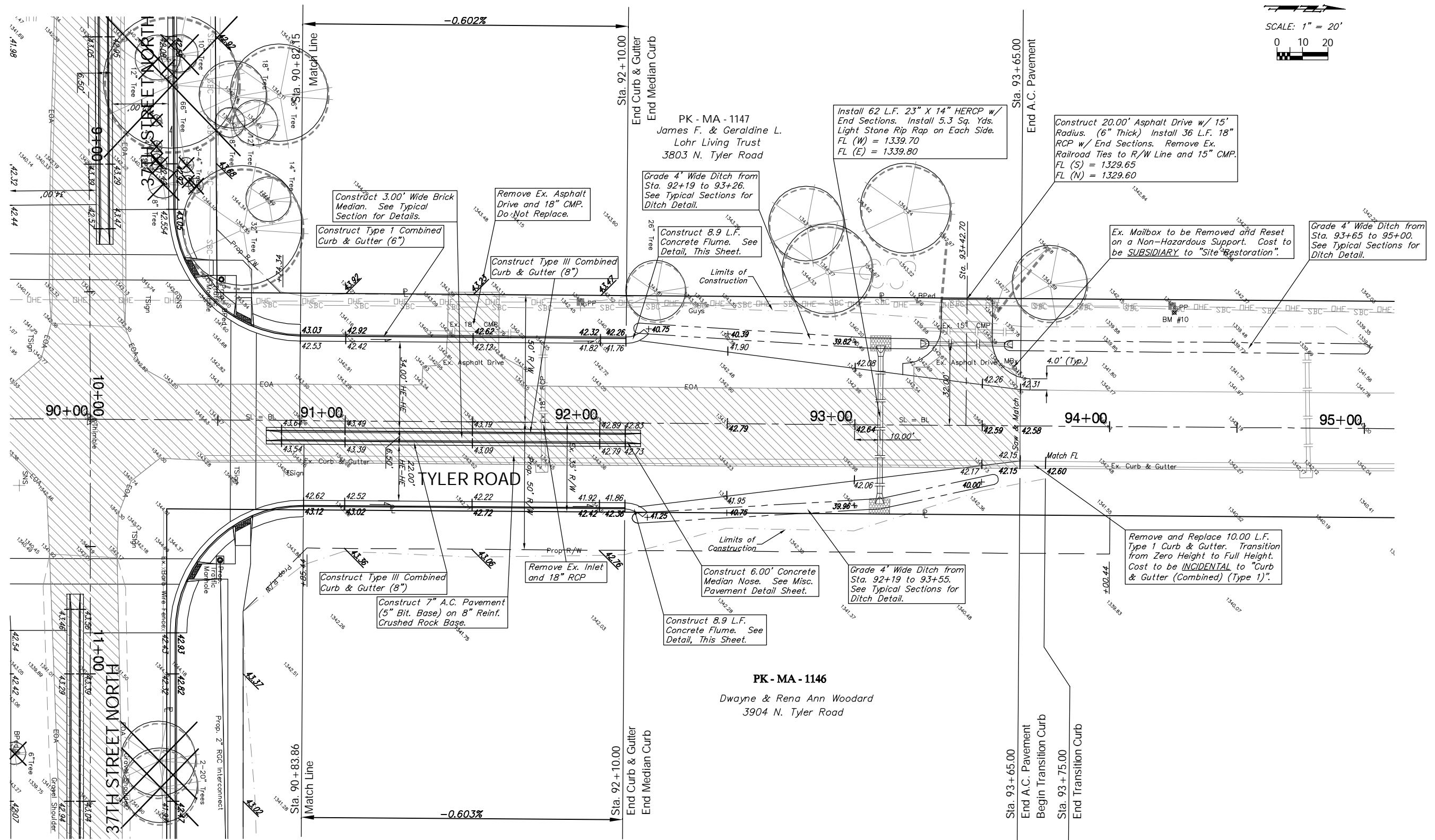
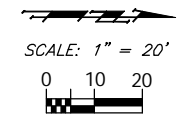


BENCHMARK:
 BM #10 - Railroad Spike in the East Face of the 2nd Power Pole North of 37th Street and West of Tyler Road Sta. 94+24, 48' Lt. Elev. = 1342.85 MSL

R/W NO.	STATE	PROJECT NO.	FISCAL YEAR	SHEET NO.	TOTAL SHEETS
7	KANSAS	87 N-0346-01	2006	24	146



Note:
 Pavement, Sidewalks, and Etc. To Be Removed Are Indicated By:

Drawing File: F:\37th Pav\37th Land\dwg\37th Base.dwg (Rev13)
 CAPITAL IMPROVEMENT PROJECT
TYLER ROAD PAVING
 Sta. 90+83.86 to Sta. 93+65.00
 37TH STREET NORTH - TYLER ROAD to RIDGE ROAD

Baughman Company, P.A.
 315 Ella St. Wichita, KS 67211 P 316-262-7271 F 316-262-0149
 ENGINEERING | SURVEYING | PLANNING | LANDSCAPE ARCHITECTURE

September 2006
 24 OF 146