

GENERAL NOTES:

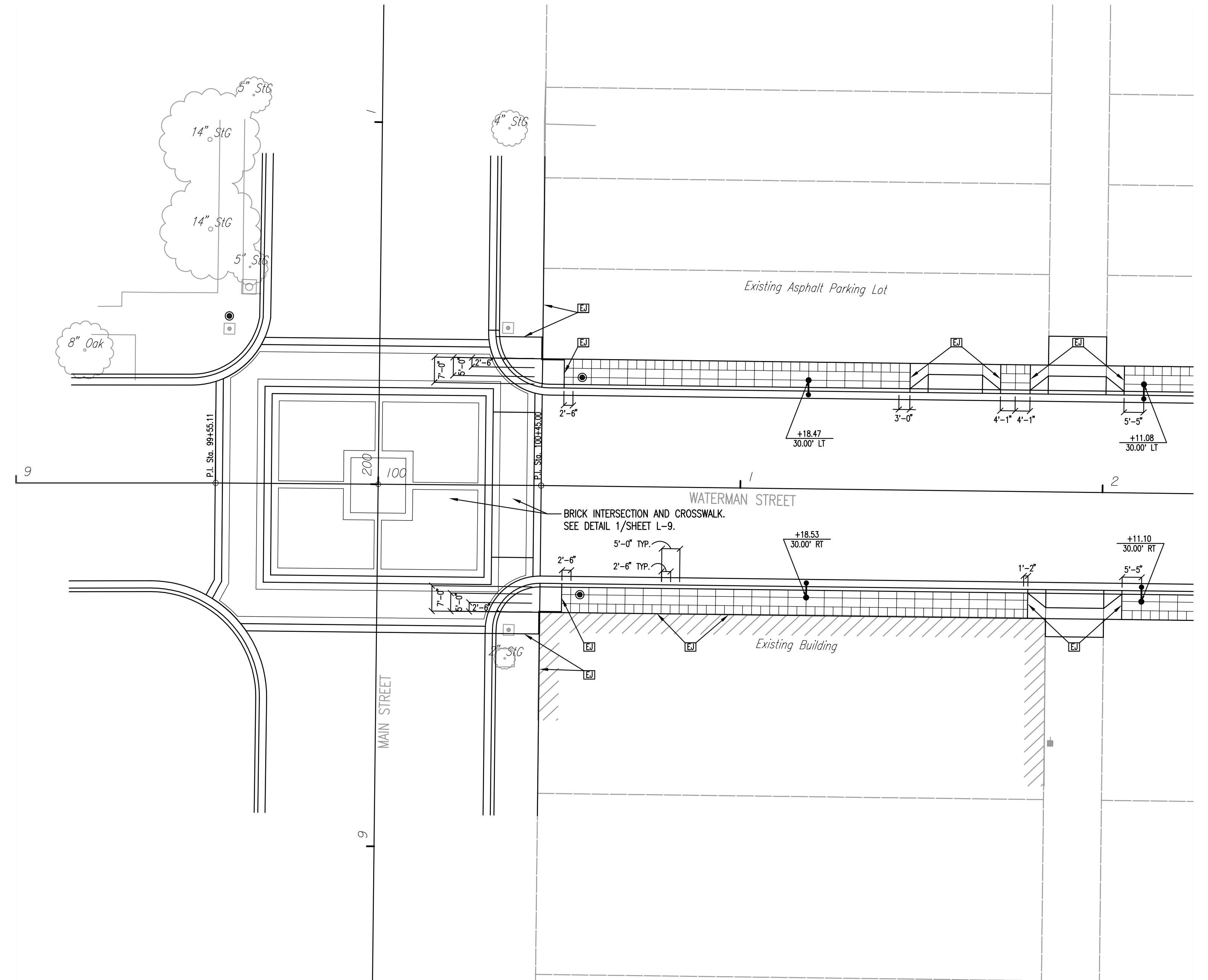
- CONTRACTOR SHALL PROVIDE A MINIMUM FORTY-EIGHT (48) HOURS ADVANCE NOTICE (EXCLUDING WEEKENDS AND HOLIDAYS) PRIOR TO BEGINNING ANY EXCAVATION, TO KANSAS ONE-CALL SYSTEM, A UTILITY LOCATION SERVICE, AT (316) 687-2470 TO REQUEST THE FOLLOWING UTILITY COMPANIES TO LOCATE ALL EXISTING LINES WITHIN THE PROJECT AREA: K.G.S. GAS, AQUILA, WESTAR, SBC, COX COMMUNICATIONS, CITY OF WICHITA SEWER MAINTENANCE AND CITY OF WICHITA WATER DEPARTMENT.
- CONTRACTOR SHALL SATISFY HIMSELF OF SURFACE AND SUBSURFACE CONDITIONS PRIOR TO BIDDING.
- THE CONTRACTOR SHALL BE RESPONSIBLE FOR PRESERVING PROPERTY IRONS. THE CONTRACTOR WILL BE REQUIRED TO RE-ESTABLISH ANY PROPERTY IRONS WHICH ARE DAMAGED OR DESTROYED BY HIS CONSTRUCTION OPERATIONS. THE COST OF REESTABLISHING IRONS SHALL BE BORNE BY THE CONTRACTOR AND SHALL BE DONE BY A LICENSED LAND SURVEYOR IN ACCORDANCE WITH STATE LAWS.
- THE CONTRACTOR WILL BE REQUIRED TO WORK AROUND IMPROVEMENTS CONSTRUCTED UNDER OTHER PROJECTS AND SHALL BE RESPONSIBLE FOR REPAIR OF DAMAGE TO IMPROVEMENTS IN PLACE. COSTS FOR COORDINATION AND REPAIRS TO IMPROVEMENTS IN PLACE, IF REQUIRED, SHALL BE BORNE BY THE CONTRACTOR.

- ALL PLANT MATERIAL SHALL BE HIGH-QUALITY NURSERY GROWN STOCK WHICH MEETS THE "AMERICAN ASSOCIATION OF NURSERYMEN" STANDARDS AS SPECIFIED BY THE "AMERICAN NATIONAL STANDARDS INSTITUTE" IN ANSI Z60.1-1986 OR AS MAY BE AMENDED IN THE FUTURE.
- ALL PLANT MATERIAL AND TURF SHALL BE INSTALLED IN ACCORDANCE WITH THE CITY OF WICHITA SPECIFICATIONS.
- THE JOINTING PATTERNS SHOWN IN THE 4" CONC. SIDEWALK PAVEMENT SHALL BE TOOLED.
- TRASH RECEPTACLES: CONTRACTOR SHALL SALVAGE EXISTING TRASH RECEPTACLES IN THE PROJECT AREA TO BE RESET. ALL TRASH RECEPTACLES (SALVAGED AND NEW) SHALL BE LOCATED IN THE FIELD AND APPROVED BY THE ENGINEER PRIOR TO INSTALLATION.
- THE BID ITEM "LANDSCAPE" SHALL INCLUDE ALL ITEMS SHOWN (AND ALL COMPONENTS NECESSARY FOR CONSTRUCTION) IN THE LANDSCAPE PLAN SHEETS AND IN THE DETAILS (SHEETS L-1 THROUGH L-9) INCLUDING BUT NOT LIMITED TO: TREES, TREE GRATES AND FRAMES, 18" RAISED PLANTERS (INCLUDING FACE BRICK), TRASH RECEPTACLES, TOPSOIL, GRAVEL, AND MULCH.

NOTE: LIGHT POLES AND BASES, ELECTRICAL AND TRAFFIC SIGNAL EQUIPMENT, BRICK INTERSECTIONS AND CROSSWALKS AND CONCRETE SIDEWALK ARE NOT INCLUDED IN THE BID ITEM "LANDSCAPE".

LANDSCAPE QUANTITIES (FOR INFORMATION ONLY)			
ITEM	QUANTITY	UNITS	NOTES
2 1/2" - 3" RED MAPLE TREE	50	EA.	Autumn Blaze Red Maple - Acer x freemanii 'Autumn Blaze' 2 1/2" - 3" CAL. : B & B : TOPSOIL, GRAVEL, FILTER FABRIC TREE STAPLES AND TREE WRAP IN TREE WELLS ARE SUBSIDIARY TO TREE PLANTING. (SEE DETAIL 1/ SHEET L-8)
2" - 2 1/2" SPRING SNOW CRABAPPLE TREE	20	EA.	Spring Snow Crabapple - Malus 'Spring Snow' 2" - 2 1/2" CAL. : B & B
60" TREE GRATE - TYPE 1 (STYLE: GREENWICH)	28	EA.	FRAME AND GRATE TO BE INSTALLED PER DETAIL 2 AND 4/SHEET L-8.
60" TREE GRATE - TYPE 2 (STYLE: METROPOLITAN)	22	EA.	FRAME AND GRATE TO BE INSTALLED PER DETAIL 3 AND 4/SHEET L-8.
18" HT. RAISED PLANTER	437	LF	TO BE INSTALLED PER DETAIL 6/ SHEET L-8.
TRASH RECEPTACLE	8	EA.	CONTACT ENGINEER FOR LOCATION. SEE DETAIL 5/ SHEET L-8.
RESET EXISTING TRASH RECEPTACLE	4	EA.	CONTACT ENGINEER FOR LOCATION.

ADDITIONAL LANDSCAPE QUANTITIES (FOR INFORMATION ONLY)			
ITEM	QUANTITY	UNITS	NOTES
TOPSOIL IN TREE WELLS	120	CY	SANDY LOAM TOPSOIL
GRAVEL IN TREE WELLS	17	CY	1/4" - 1 1/2" DIA.
CEDAR MULCH IN TREE WELLS	12	CY	GRADE A CEDAR MULCH
TOPSOIL IN RAISED PLANTERS	68	CY	SANDY LOAM TOPSOIL
GRAVEL IN RAISED PLANTERS	19	CY	1/4" - 1 1/2" DIA.
CEDAR MULCH IN RAISED PLANTERS	5	CY	GRADE A CEDAR MULCH



LEGEND

+18.53 30.00' RT LIGHT POLES WITH STATION AND OFFSET TO CENTER OF BASE. (REFERENCE ELECTRICAL STREETScape PLANS FOR TYPE AND DETAILS) JOINT USE POLES (REFERENCE TRAFFIC SIGNAL PLANS) SERVICE BOX (REFERENCE TRAFFIC SIGNAL PLANS) TOOLED JOINT LINES IN 4" CONC. SIDEWALK PAVEMENT (AS DIMENSIONED ON PLAN) SEE DETAIL 2/ SHEET L-9	TREE GRATE - TYPE 1 (STYLE: GREENWICH) WITH 2-1/2" RED MAPLE (SEE DETAILS 1,2 AND 4/ SHEET L-8 (STATION AND OFFSET TO CENTER OF GRATE)) TREE GRATE - TYPE 2 (STYLE: METROPOLITAN) WITH 2-1/2" RED MAPLE (SEE DETAIL 1,3 AND 4/ SHEET L-8 (STATION AND OFFSET TO CENTER OF GRATE)) TRASH RECEPTACLE. SEE DETAIL 5/ SHEET L-8 EXPANSION JOINT. SEE DETAIL 3/ SHEET L-9
--	---

Scale: 1"=20'

<p>LANDSCAPE PLAN STA. 96+00 TO STA. 102+00</p> <p>JAMES L. ARMOUR, P.E.-CITY ENGINEER CITY OF WICHITA PROJECT NO. 468-84167</p> <p>Professional Engineering Consultants, P.A. 303 S. TOPEKA • WICHITA, KANSAS 67202 316-262-2691 • FAX 316-262-3003</p>	<p>Revision</p> <p>By</p> <p>Date</p>
<p>Designed by RMH, IDK</p> <p>Drawn by IDK</p>	<p>Job No. 06237</p> <p>Date February, 2007</p> <p>Sht. 1-1 of 9</p>