

P.I. @ Sta. 95+96.59
I. No Monument Set

P.I. @ Sta. 99+55.11
Deflection Angle = 00°27'49" Rt.
I. No Monument Set

P.I. @ Sta. 100+45.00
Deflection Angle = 00°14'56" Rt.
I. No Monument Set

AT&T, Wichita Central Unit
154 N. Broadway Ave. Rm 210
Wichita, Ks. 67202
Jason Edwards (316) 268-2008

Aquila Network
1611 S. Hoover Rs.
Wichita, Ks. 67209
Calvin Briggs (316) 941-1608

BNSF Railway
Newton, Ks. 67114
Joe Courson (316) 284-3479

Cox Communications
701 E. Douglas Ave.
Wichita, Ks. 67202
Eva Moore (316) 260-7204

Kansas Gas Service
1021 E. 26th St. N.
Wichita, Ks. 67219
Jim Coe (316) 832-3126

Westar Energy
1900 E. Central Ave.
Wichita, Ks. 67214
Hank Velghe (316) 261-6828

Wichita Water and Sewer Department
8th Floor - City Hall
455 N. Main St.
Wichita, Ks. 67202
Bill Perkins (316) 268-4555

EXISTING SERVICE BOX ADJUSTMENTS

Sta. 100+38, 36' Lt.
From Elev. 1298.16 to Elev. 1297.86

Sta. 100+42, 31' Rt.
From Elev. 1298.16 to Elev. 1297.76

Sta. 100+44, 31' Lt.
From Elev. 1298.34 to Elev. 1297.80

REMOVAL OF EXISTING STRUCTURES *		
STATION	SIDE	ITEM
100+60	Lt./Rt.	No Parking Sign
100+80	Lt.	No Parking Sign
101+00	Lt.	30" RCP (E)
101+07	Lt./Rt.	12" RCP (NE-SW)
101+18	Rt.	12" RCP (E)
101+82	Rt.	SDM 65, 10" VCP (S) & 12" VCP (E)
101+93	Lt.	SDA 64 & 15" RCP (S)

* For Information Only

Utilities
 Gas: Kansas Gas Service
 Power: Westar Energy
 Sanitary Sewer: Wichita Water and Sanitary Sewer
 Storm Water Sewer: Wichita Water and Sanitary Sewer
 Telephone: AT&T
 Television: Cox Communication
 Water: Wichita Water and Sanitary Sewer

BM#8 Chis. top of curb @ N curb return NW corner of Waterman St. & Water St.
58.12' Lt. @ Sta. 96+07.94 Elev. = 1298.40

BM#7 Chis. top of curb @ SE corner of Century II parking lot NW of Waterman St. & Main St.
64.25' Lt. @ Sta. 99+45.10 Elev. = 1298.52

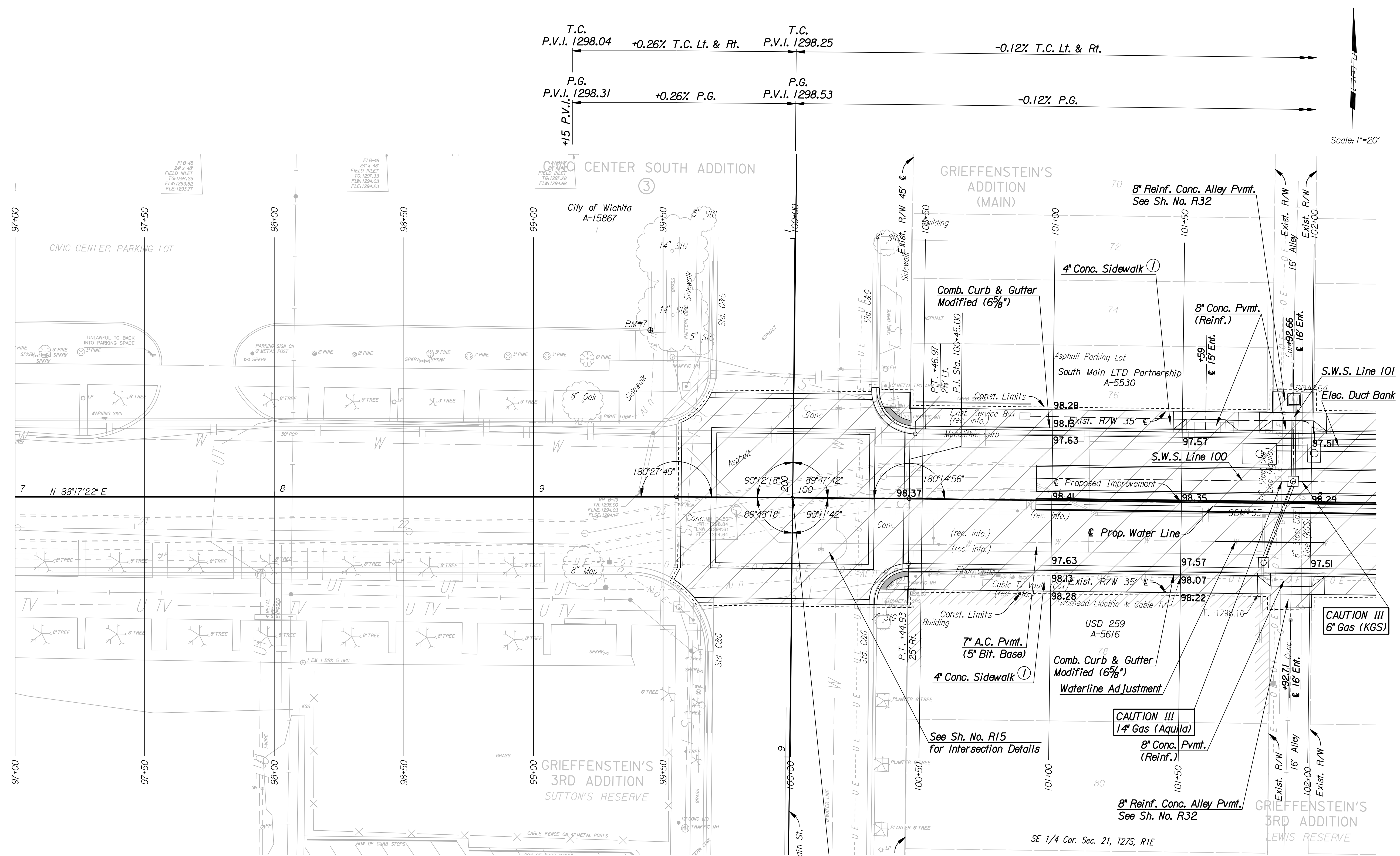
① See Sh. LI-L7 for Sidewalk Jointing Patterns

LEGEND

Pavement Removal

No.	Revision	By	Date
WATERMAN STREET PLAN STA. 97+00 TO STA. 102+00 JAMES L. ARMOUR, P.E.-CITY ENGINEER CITY OF WICHITA PROJECT NO. 468-84167 Professional Engineering Consultants, P.A. 303 S. TOPEKA • WICHITA, KANSAS 67202 316-262-2691 • FAX 316-262-3003			
Designed by	MJW	Job No.	06237
Drawn by	DRP	Date	Feb., 2007
			Sht. R4 of R111

DSNR: MJW OPER: DRP SCALE: 1"=20'
 I:/2006/06237/PLAN/06237-000-PL96.DGN LAST REV: 2-23-2007 BY: drp



Scale: 1"=20'