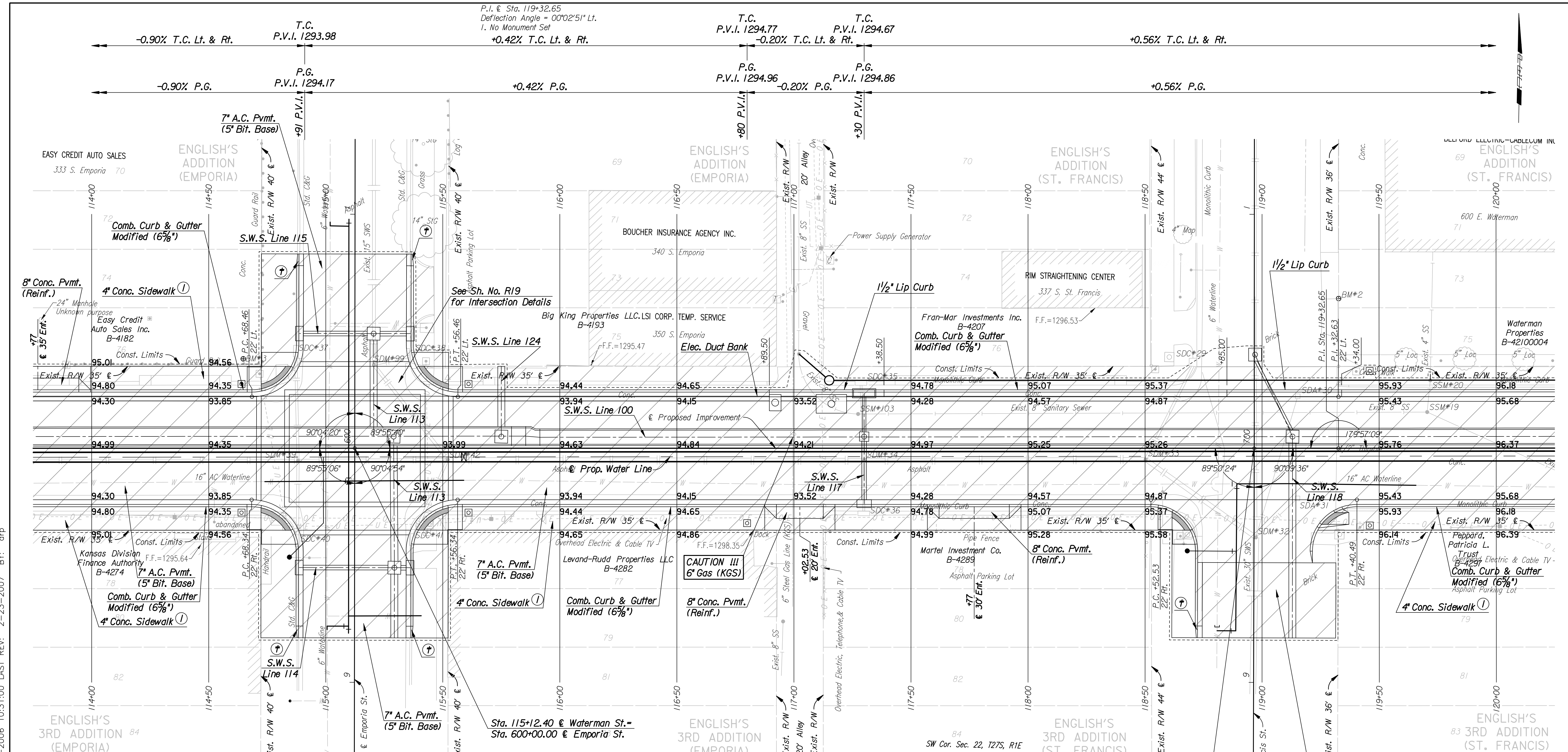


P.I. @ Sta. 119+32.65  
 Deflection Angle = 0°02'51" Lt.  
 1. No Monument Set  
 +0.42% T.C. Lt. & Rt.

T.C. P.V.I. 1294.77  
 P.G. P.V.I. 1294.96  
 T.C. P.V.I. 1294.67  
 P.G. P.V.I. 1294.86

+0.56% T.C. Lt. & Rt.  
 +0.56% P.G.



REMOVAL OF EXISTING STRUCTURES *		
STATION	SIDE	ITEM
114+72	Lt.	Reset Traffic Signal Pole
114+83	Rt.	Traffic Signal Pole
114+87	Lt.	SDC 37 & 12" VCP (S)
114+88	Rt.	SDM 39, 12" VCP (S) & 12" VCP (E)
114+88	Rt.	SDC 40
115+20	Lt.	SDM 99, 15" VCP (N), 12" VCP (E) & 15" VCP (SE)
115+37	Lt.	SDC 38
115+37	Rt.	SDC 41 & 12" VCP (NE)
115+43	Lt.	Reset Traffic Signal Pole
115+43	Rt.	Reset Traffic Signal Pole
115+44	Rt.	Traffic Signal Junction Box

REMOVAL OF EXISTING STRUCTURES *		
STATION	SIDE	ITEM
115+52	Rt.	SDM 42 & 21" VCP (E)
117+27	Lt.	SSM 103 & 8" VCP (E&W)
117+29	Lt.	SDC 35 & 10" VCP (S)
117+30	Rt.	SDC 36 & 10" VCP (N)
117+30	Rt.	SDM 34 & 21" VCP (E)
118+50	Rt.	SDM 33, 12" VCP (NE) & 21" VCP (SE)
118+50	Rt.	Speed Limit Sign
118+54	Lt.	Traffic Signal Pole
118+65	Rt.	Traffic Signal Pole
118+68	Rt.	Traffic Signal Junction Box
118+70	Rt.	Speed Limit Sign
118+71	Lt.	SDC 29

REMOVAL OF EXISTING STRUCTURES *		
STATION	SIDE	ITEM
118+97	Rt.	SDM 32, 12" VCP (N), 30" VCP (S) & 2-8" VCP (NE)
119+15	Lt.	SDA 30
119+15	Rt.	SDA 31
119+20	Rt.	Speed Limit Sign
119+33	Rt.	Traffic Signal Junction Box
119+40	Lt.	Traffic Signal Pole
119+42	Rt.	Traffic Signal Pole
119+71	Lt.	SSM 19 & 4" PVC (N) & 8" (SE)
119+72	Lt.	SSM 20

\* For Information Only  
 The Contractor shall remove all equipment associated with the existing traffic signal at Waterman and St. Francis. This work shall include the removal of traffic signal poles and bases, controller and base service and junction boxes, manholes and all other related material and equipment. Pole bases shall be removed to a minimum of 3 ft. below finished grade. Traffic signal poles, mast arms, heads and the controller shall be salvaged and stored on site for removal by The City of Wichita. This work shall be included in the contract price bid for "Removal of Existing Structures".

BM#3 Chis. SW corner, conc. slab sign base NW corner of Waterman St. and Emporia St.  
 32.20' Lt. @ Sta. 114+64.75  
 Elev. = 1294.80

BM#2 Chis. W edge conc. parking lot S side of conc. drive 25' ± N of NE corner of Waterman St. and St. Francis St.  
 63.98' Lt. @ Sta. 119+32.75  
 Elev. = 1296.05

- ① See Sh. LI-L7 for Sidewalk Jointing Patterns
- ⊕ 5' Transition from Combined Curb & Gutter Modified to match existing Curb & Gutter.

**Utilities**  
 Gas: Kansas Gas Service  
 Power: Westar Energy  
 Sanitary Sewer: Wichita Water and Sanitary Sewer  
 Storm Water Sewer: Wichita Water and Sanitary Sewer  
 Telephone: AT&T  
 Television: Cox Communication  
 Water: Wichita Water and Sanitary Sewer

**LEGEND**  
 Pavement Removal

No.	Revision	By	Date
WATERMAN STREET			
<b>PLAN</b>			
STA. 114+00 TO STA. 120+00			
JAMES L. ARMOUR, P.E.—CITY ENGINEER CITY OF WICHITA PROJECT NO. 468-84167			
<b>Professional Engineering Consultants, P.A.</b>			
303 S. TOPKA • WICHITA, KANSAS 67202 316-262-2691 • FAX 316-262-3003			
Designed by	MJW	Job No.	06237
Drawn by	DRP	Date	Feb., 2007
			Sht. R7 of R111

DSNR: MJW OPER: DRP SCALE: 1"=20'  
 I:/2006/06237/PLAN/06237-000-PL114.DGN 07-05-2006 10:31:00 LAST REV: 2-23-2007 BY: drp