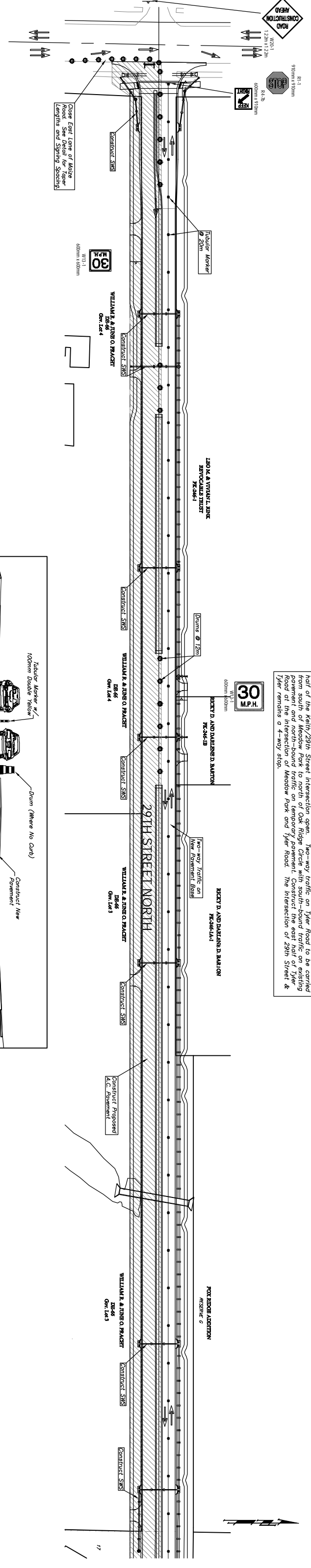
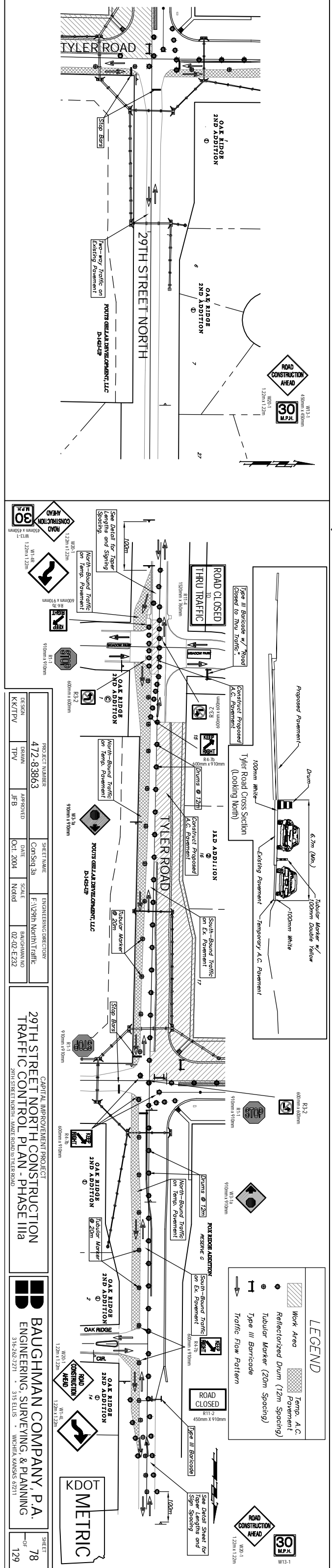
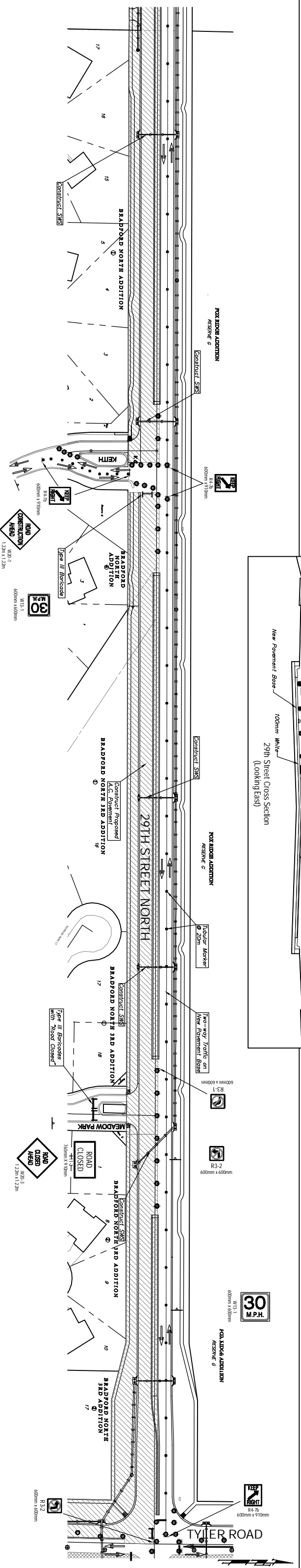


Initial Road Construction Ahead West of Meadoz Road



Phase IIIa
Two-way traffic will be carried on the north half of the new pavement base of 29th Street from Meadoz Road to Tyler Road. Construct pavement and storm water system on the south half of 29th Street from Meadoz Road to Tyler Road and on the west half of Tyler Road from north of Meadoz Park to 29th Street. Close Meadoz Park at 29th Street and keep the east half of the Keith/29th Street intersection open. Two-way traffic on Tyler Road to be carried from south of Meadoz Park to north of Oak Ridge Circle with south-bound traffic on existing road at the intersection of Meadoz Park and Tyler Road. The intersection of 29th Street & Tyler remains a 4-way stop.



LEGEND

- Work Area
- Temp. A.C. Pavement
- ReflectORIZED DUM (12m Spacing)
- Tubular Marker (20m Spacing)
- Type III Barricade
- Traffic Flow Pattern

PROJECT NUMBER	472-83863	SHEETNAME	F-1929th North/Traffic
DISIGN	BAUGHMAN	DATE	OCT. 2004
DRAWN	TPV	SCALE	NORD
CHK'D	JFB	APPROVED	OCT. 2004
PROJECT	CAPITAL IMPROVEMENT PROJECT		
DATE	OCT. 2004		
SCALE	NORD		
APPROVED	OCT. 2004		
PROJECT NUMBER	472-83863		
DISIGN	BAUGHMAN		
DRAWN	TPV		
CHK'D	JFB		
PROJECT	CAPITAL IMPROVEMENT PROJECT		
DATE	OCT. 2004		
SCALE	NORD		
APPROVED	OCT. 2004		

29TH STREET NORTH TRAFFIC CONTROL PLAN - PHASE IIIa

BAUGHMAN COMPANY, P.A.
ENGINEERING, SURVEYING & PLANNING
315 E. ELIAS • WICHITA, KANSAS 67211

SHEET 78 OF 129