

| F.H.W.A. REGION NO. | STATE | PROJECT NO. | YEAR | SHEET NO. | TOTAL SHEETS |
|---------------------|--------|-----------------|------|-----------|--------------|
| 7 | KANSAS | 54-87 K-8258-04 | 2004 | 26 | 60 |

STA. 49+723.529 LINE NS =
7.211 m LT. STA. 49+723.529
@ ARMOUR RD.
BEGIN WATERLINE NS 1
INSTALL
1- ANCHORED VALVE ASSEMBLY SPECIAL
400 mm (16")(S)
(MJ BUTTERFLY VALVE)
VALVE BOX ELEV. 409.200±
CONNECT TO EXISTING WATERLINE
PIPE 400 mm (16")(N)

STA. 49+746.526 LINE NS 1 = 7.192 m LT.
STA. 49+746.526 @ ARMOUR RD.
INSTALL
1- CIMJ TEE 400 mm x 200 mm
(16" x 8")
1- ANCHORED VALVE ASSEMBLY
200 mm (8") (E)
(MJ GATE VALVE)
VALVE BOX ELEV. 409.189±
INSTALL WATERLINE PIPE
200 mm (8") x 10.0 m
CONNECT TO EXISTING
WATERLINE PIPE 200 mm (8") (E)

STA. 49+874.393 LINE NS 1 = 7.008 m LT.
STA. 49+874.393 @ ARMOUR RD.
INSTALL
1- CIMJ TEE 400 mm x 200 mm
(16" x 8")
1- ANCHORED VALVE ASSEMBLY
200 mm (8") (E)
(MJ GATE VALVE)
VALVE BOX ELEV. 408.995
INSTALL WATERLINE PIPE
200 mm (8") x 10.0 m
CONNECT TO EXISTING
WATERLINE PIPE 200 mm (8") (E)

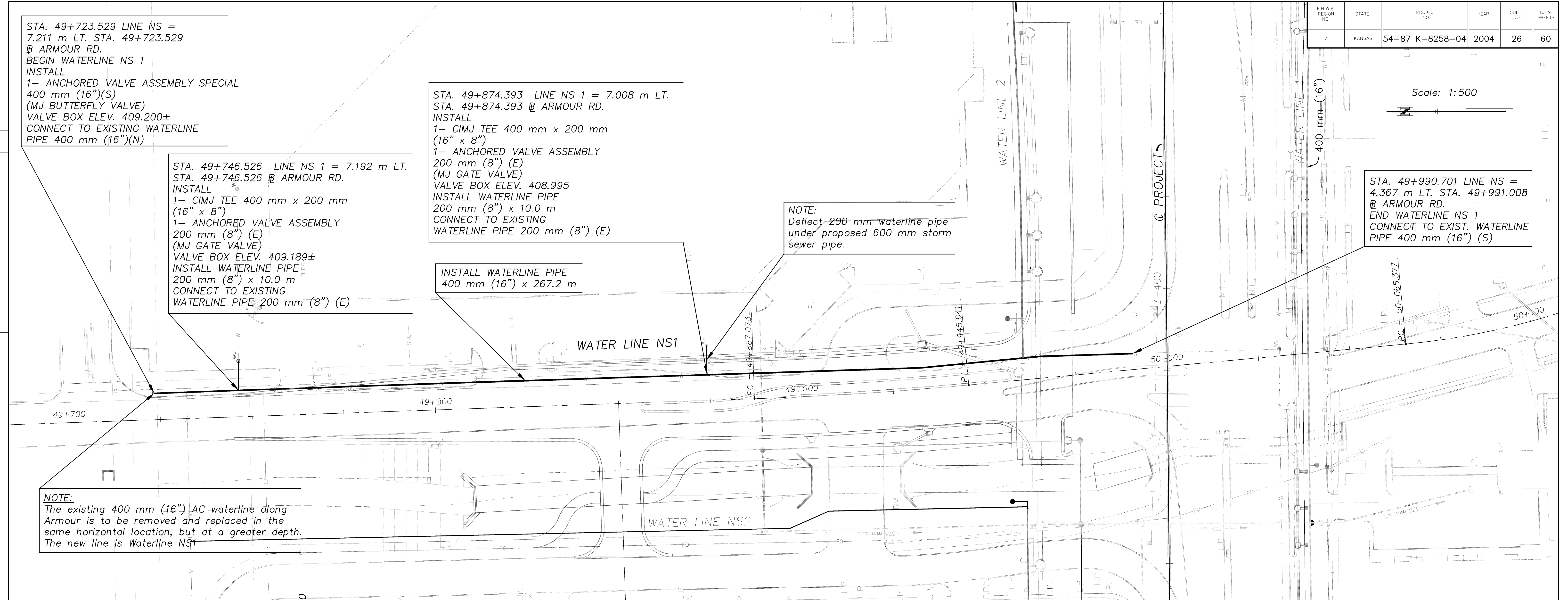
NOTE:
Deflect 200 mm waterline pipe
under proposed 600 mm storm
sewer pipe.

STA. 49+990.701 LINE NS =
4.367 m LT. STA. 49+991.008
@ ARMOUR RD.
END WATERLINE NS 1
CONNECT TO EXIST. WATERLINE
PIPE 400 mm (16") (S)

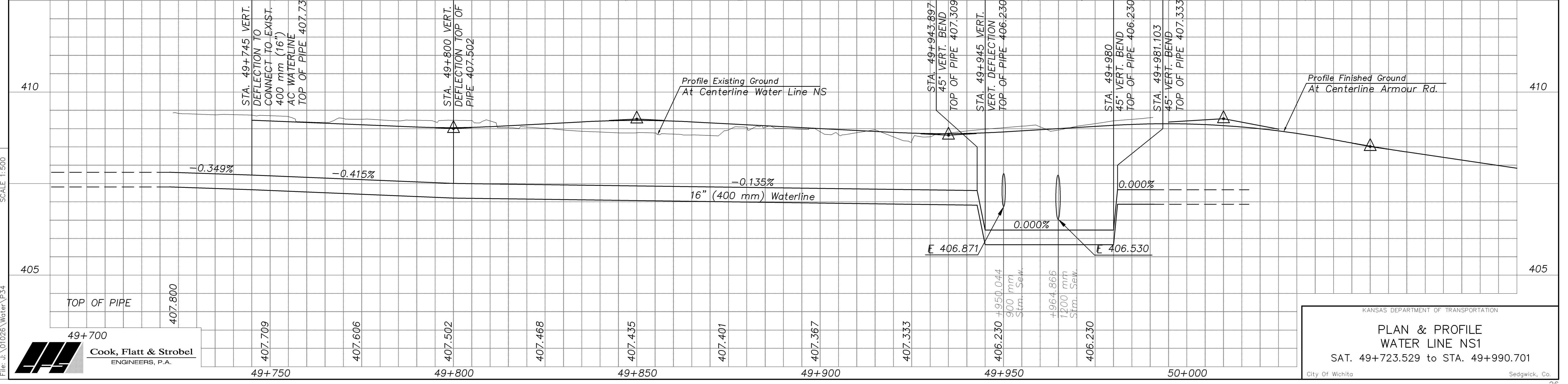
Scale: 1:500

| DATE | BY |
|------|----|
| | |
| | |

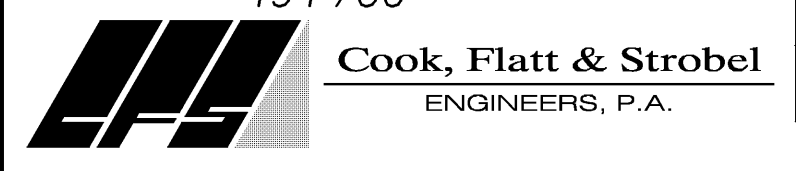
| REFERENCE NOTED | REFERENCE CHECKED |
|-----------------|-------------------|
| | |
| | |



NOTE:
The existing 400 mm (16") AC waterline along
Armour is to be removed and replaced in the
same horizontal location, but at a greater depth.
The new line is Waterline NS1



Drawn by: [Name]
Plotted: [Name]
File: J:\01026\Water\PS4
SCALE 1:500



KANSAS DEPARTMENT OF TRANSPORTATION
**PLAN & PROFILE
WATER LINE NS1**
SAT. 49+723.529 to STA. 49+990.701
City of Wichita Sedgwick, Co.