

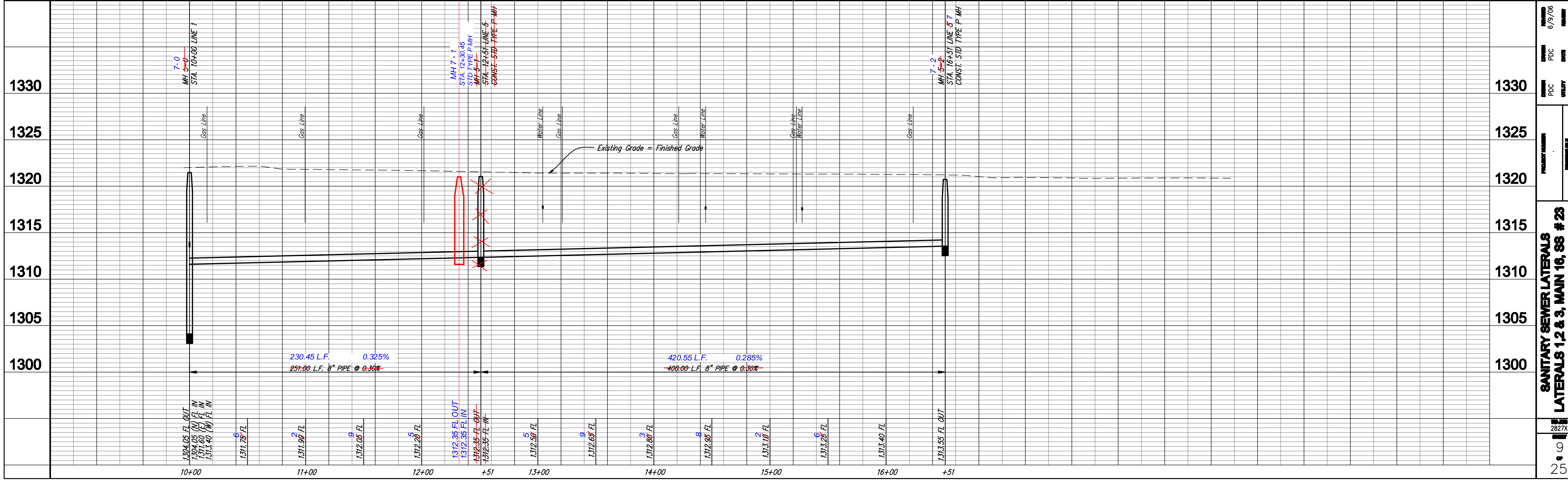
NOTE: Horizontal distances are from main to cleanout
Vertical distances are from existing ground to wye
Cleanout to wye - 4'
All services are single wye unless specifically noted

NUMBER	TYPE	LOCATION			DESIGN	FOR INFORMATION ONLY	
		LOT NO.	BLOCK NO.	ADDITION NAME		LINE NO.	STATION \ DIRECTION
1	Double Riser	7, 8	1	Suburban Acres	7	11+30/Lt.	10' 18'
2	Double Riser	18, 18	1	Suburban Acres	7	11+30/Rt.	10' 30'
3	Double Riser	8, 9	1	Suburban Acres	7	12+30/Lt.	10' 24'
4	Double Riser	16, 17	1	Suburban Acres	7	13+30/Rt.	9' 24'
5	Double Riser	10, 11	1	Suburban Acres	7	14+30/Lt.	9' 24'
6	Double Riser	14, 15	1	Suburban Acres	7	15+30/Rt.	9' 24'
7	Double Riser	12, 13	1	Suburban Acres	7	16+30/Lt.	8' 24'

The Contractor shall field verify the existing manhole stub elevations prior to the start of construction.

The Contractor shall contact each property owner to verify the location of the riser with the property owner.

REVISED: 6/27/07



Rugles & DeLeon, P.A.
Engineering & Surveying
Professional Seal
No. 10000
State of Texas
2/22/06



6/9/06
PDC
2/22/06

PROJ. NO. 468-83958
DATE 6/27/07
ENGR. BASE

SANITARY SEWER LATERALS
LATERALS 1, 2 & 3, MAIN 16, SS # 23
LINE 7
2827X
9
25