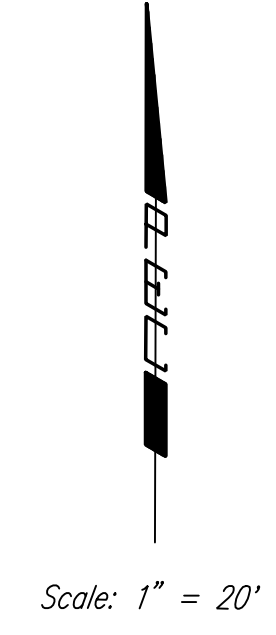


PROJECT NO.	YEAR	SHEET NO.	TOTAL SHEETS
472-8418	2005	35	79

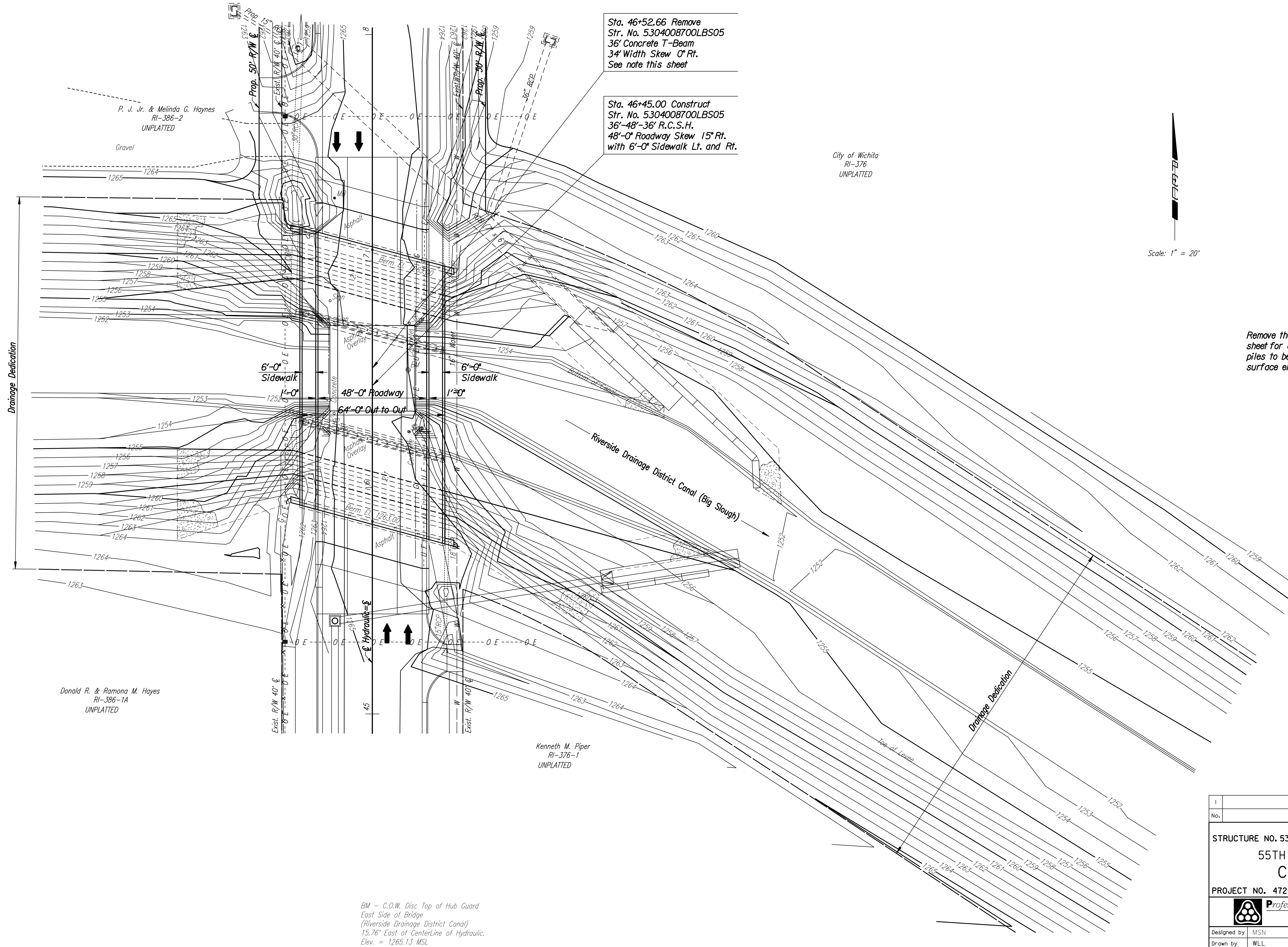
Sta. 46+52.66 Remove
Str. No. 5304008700LBS05
36' Concrete T-Beam
34' Width Skew 0° Rt.
See note this sheet

Sta. 46+45.00 Construct
Str. No. 5304008700LBS05
36'-48'-36' R.C.S.H.
48'-0" Roadway Skew 15° Rt.
with 6'-0" Sidewalk Lt. and Rt.

City of Wichita
RI-376
UNPLATTED



Remove the existing bridge. See General Note sheet for additional information. All substructure piles to be removed or cut off 2' below final surface elevation.



P. J. Jr. & Melinda G. Haynes
RI-386-2
UNPLATTED

Donald R. & Ramona M. Hayes
RI-386-1A
UNPLATTED

Kenneth M. Piper
RI-376-1
UNPLATTED

LEGEND
Riprap (Light Stone)

BM - C.O.W. Disc Top of Hub Guard
East Side of Bridge
(Riverside Drainage District Canal)
15.76' East of Centerline of Hydraulic.
Elev. = 1265.13 MSL

Drawn by: bjs/wll
Plotted by: ras 9-9-2005
Drawing Name: I:\1999\99764\officecheck\99764_C-contour(EPI)\08.dgn

1			
No.	Revisions	By	Date
CITY OF WICHITA			
STRUCTURE NO. 5304008700LBS05		STA. 46+45.00	
55TH AND HYDRAULIC AVE. CONTOUR MAP			
PROJECT NO. 472-8418		SEDGWICK COUNTY	
Professional Engineering Consultants, P.A.			
<small>303 S. TOPEKA • WICHITA, KANSAS 67202 316-262-2991 • FAX 316-262-3003</small>			
Designed by	MSN	Checked by	RAS
Drawn by	WLL	Date	July, 2005
		Job No.	99764