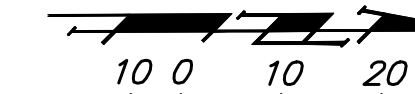


BENCHMARKS

PVI No VC
Elev = 1261.18

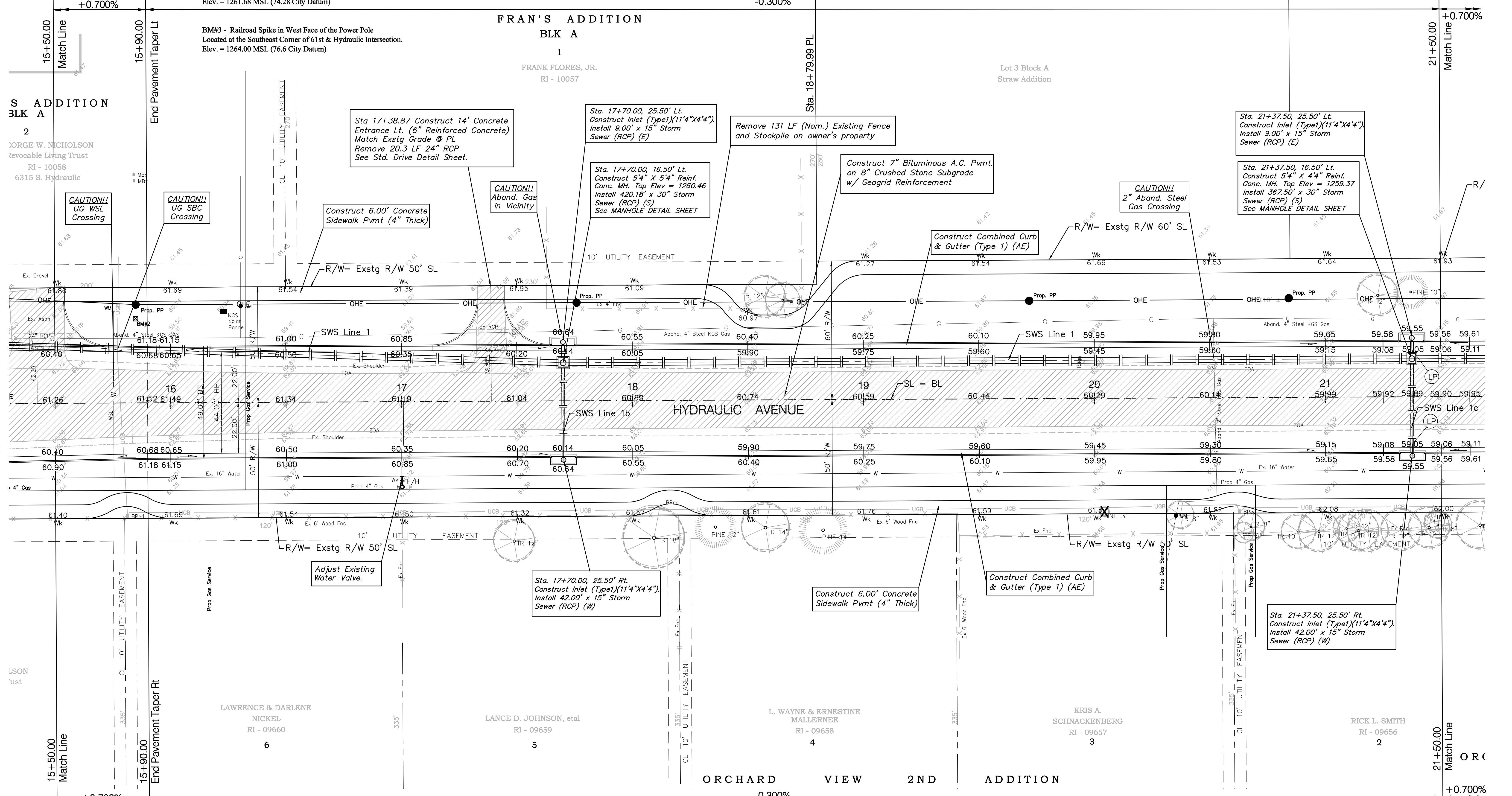
BM#2 - Railroad Spike in East Face of the Power Pole,
Station 16+00 Hydraulic, 38' Left.
Elev. = 1261.68 MSL (74.28 City Datum)

BM#3 - Railroad Spike in West Face of the Power Pole
Located at the Southeast Corner of 61st & Hydraulic Intersection.
Elev. = 1264.00 MSL (76.6 City Datum)



SCALE: 1" = 20'

PVI 50' VC
Elev = 1259.50



Note:
Trees/Shrubs to be removed are marked thus:

Note:
Pavement, Sidewalks, and Etc. To Be Removed Are Indicated By:

Drawing File: F:\eng\Hydraulic Pha3\Land\dwg\Basemap.dwg [Pw02]
Project No. 99-09-E452 CAPITAL IMPROVEMENT PROJECT
HYDRAULIC AVENUE PAVING
Sta. 15+50.00 to Sta. 21+50.00
HYDRAULIC AVENUE PAVING 63RD STREET SOUTH TO THE RIVERSIDE DRAINAGE CANAL

Baughman Company, P.A.
315 Ellis St. Wichita, KS 67211 P 316-262-7271 F 316-262-0149
ENGINEERING | SURVEYING | PLANNING | LANDSCAPE ARCHITECTURE

SHEET 11 OF 79