

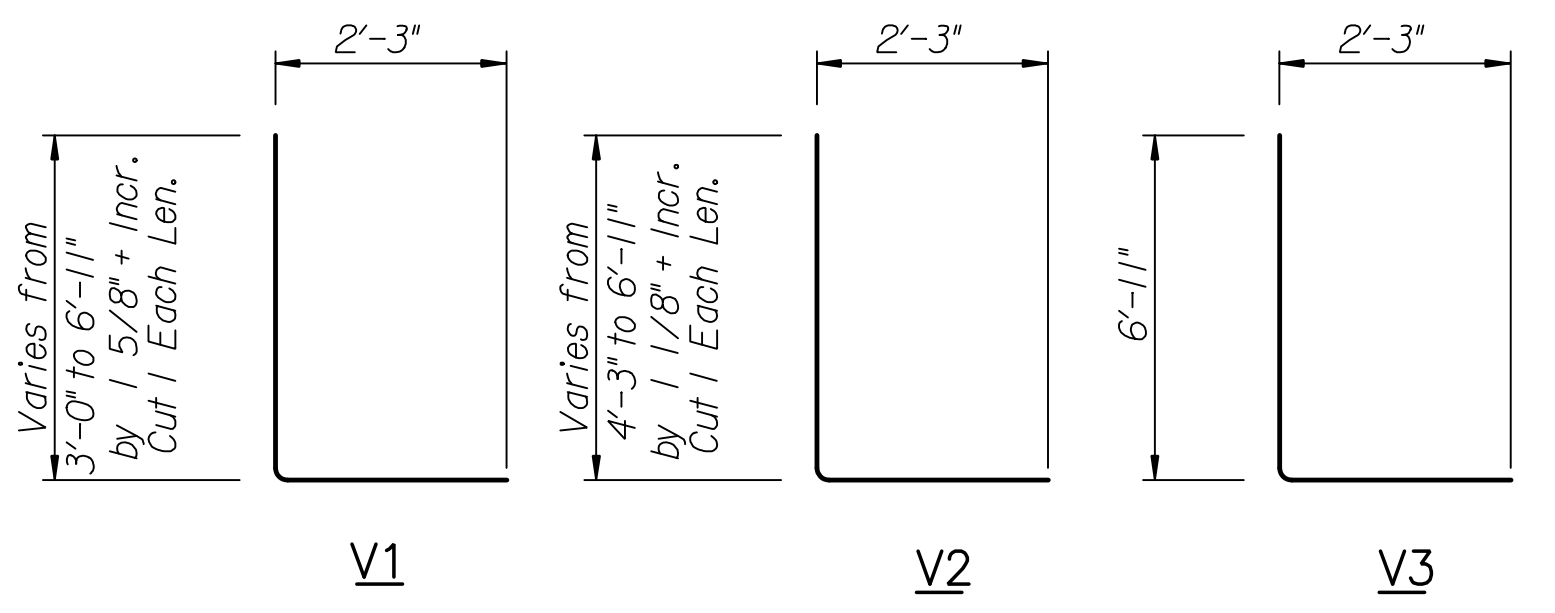
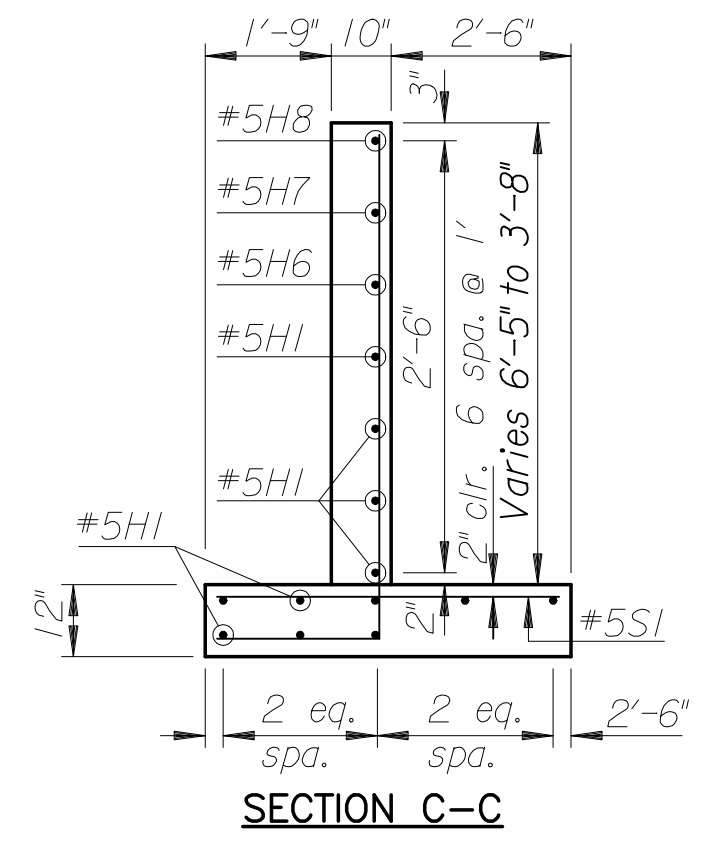
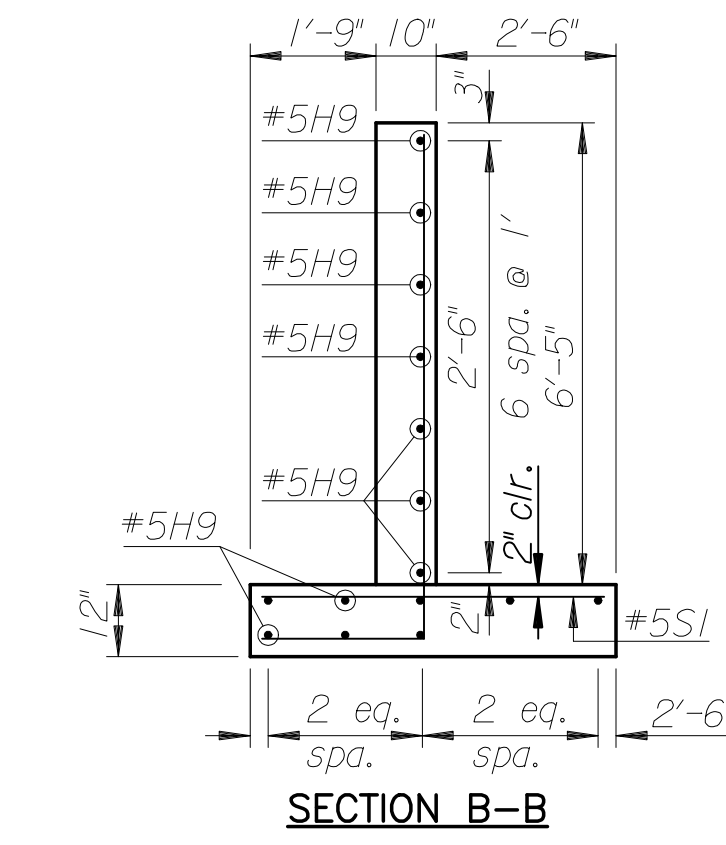
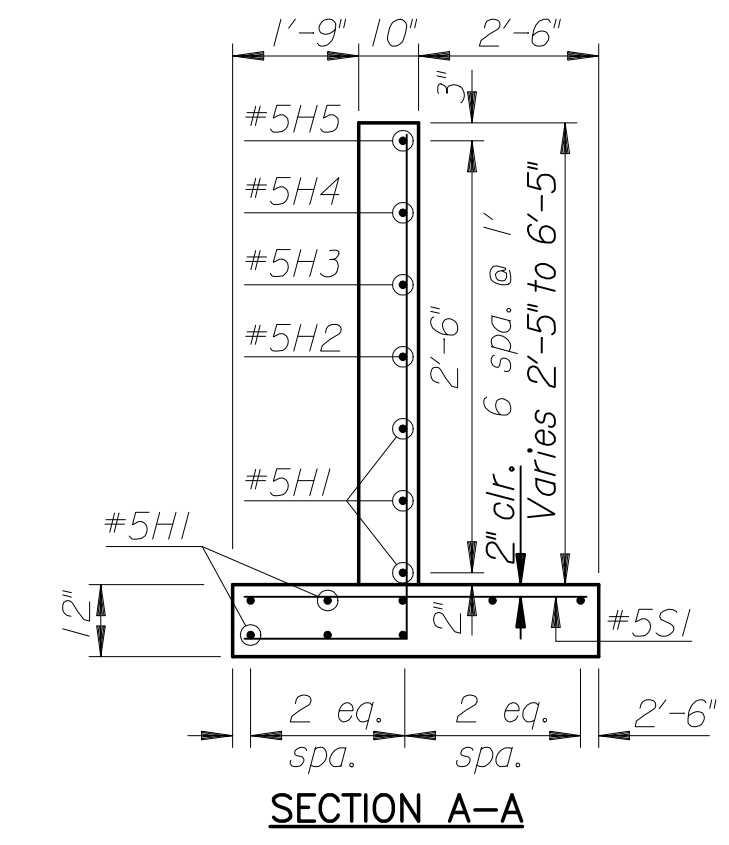
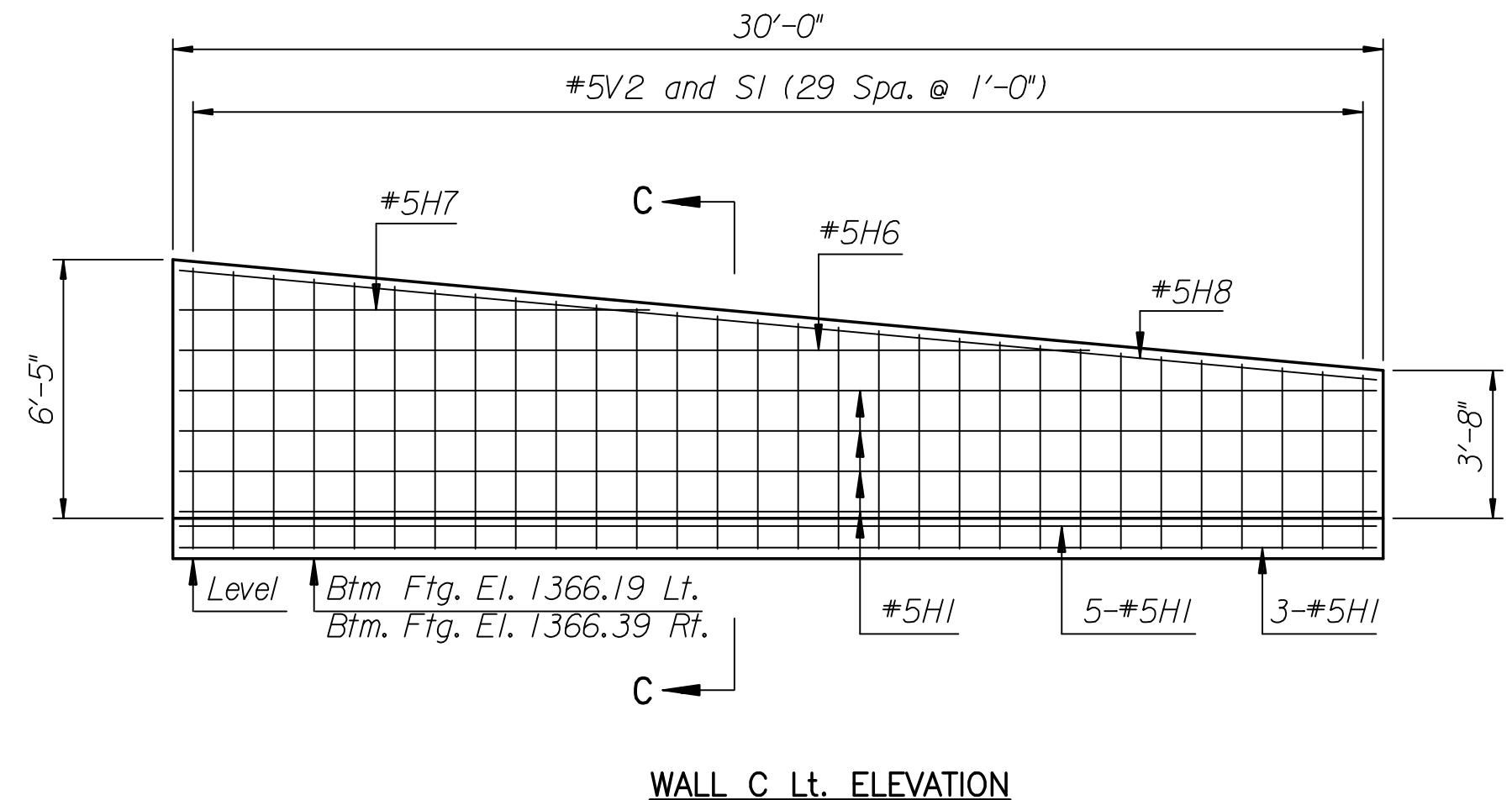
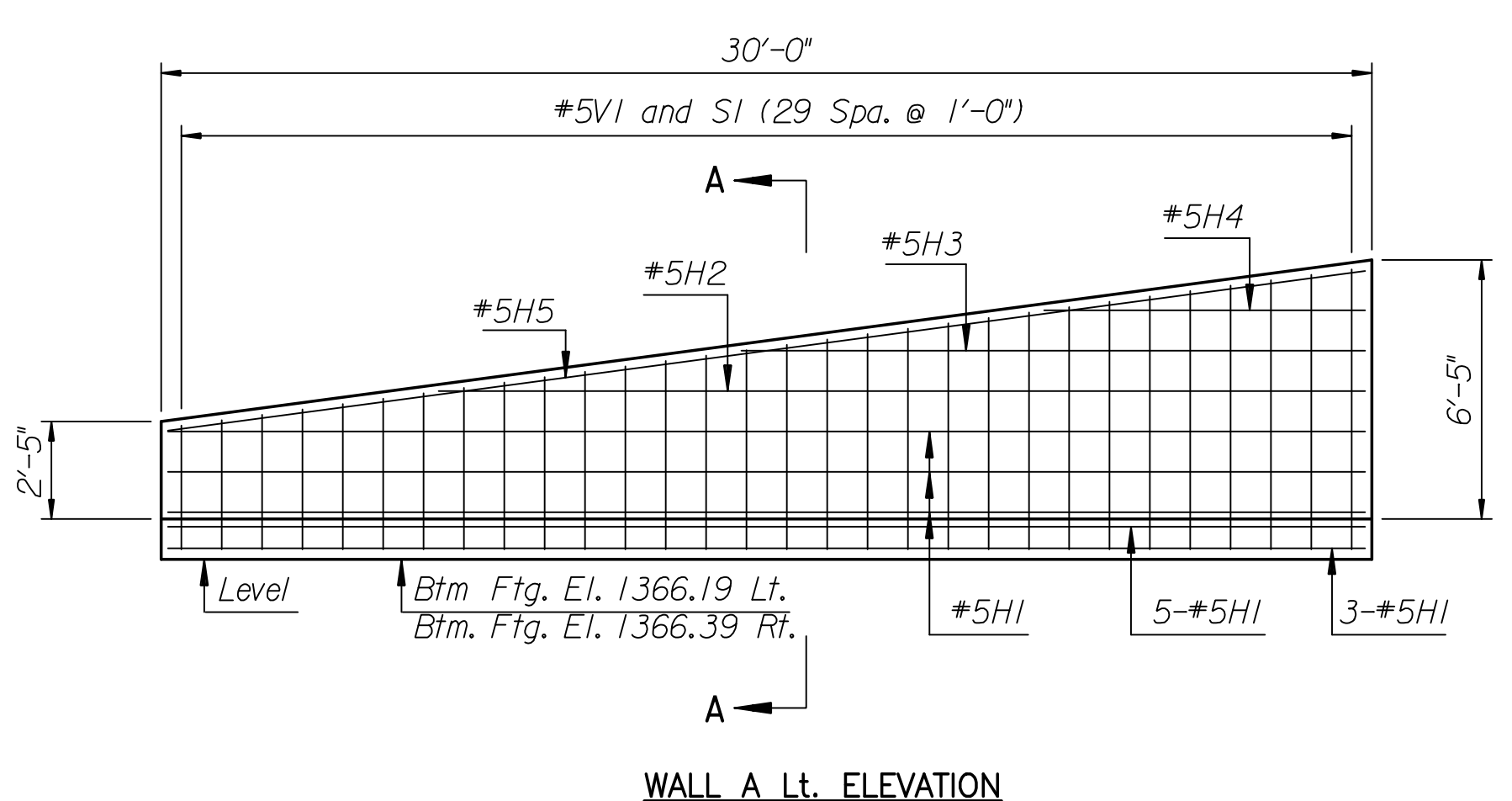
- GENERAL NOTES**
- Grade 4.0 Concrete AE shall be used throughout. Bevel all exposed edges with a 3/4 inch triangular moulding.
 - All reinforcing to have 2" edge and end clearance unless noted. Reinforcing clearance to bottom of slab is 3".
 - Excavation to be in accordance with BR100 and shall be computed with a vertical offset limit of X=2".

BILL OF MATERIALS (ONE SIDE)						
REINFORCING STEEL						
Mark	No.	Size	Length	Mark	No.	Size
Typical Lt. or Rt.						
H1	23	5	29'-8"	V1	30	5
H2	1	5	22'-11"	V2	30	5
H3	1	5	15'-5"	V3	184	5
H4	1	5	7'-11"			
H5	1	5	29'-11"			
H6	1	5	22'-6"			
H7	1	5	11'-8"			
H8	1	5	29'-9"			
H9	30	5	46'-8"			
SI	244	5	4'-9"			

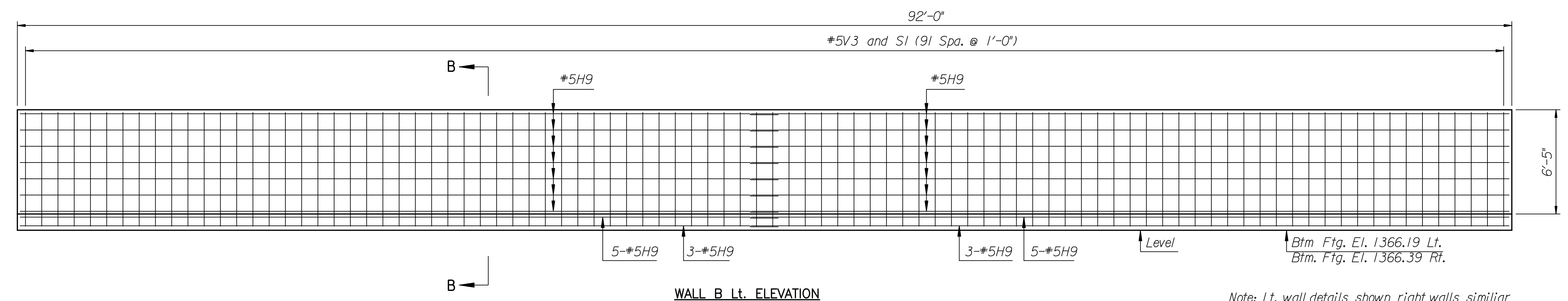
* SUMMARY OF QUANTITIES		
Item	Quantity	Unit
Concrete Grade (4.0)(AE)	182.2	C.Y.
Reinforcing Steel (Gr. 60)(EpoxyCoated)	11,520	Lbs.
Reinforced Concrete Riprap(4")	820.8	S.Y.
Class III Excavation	1162	C.Y.
Sidewalk(4")(Special)	846	S.F.

* Total for Lt. and Rt. of Greenwich

RETAINING WALL LAYOUT



BENDING DIAGRAMS
Dimensions are out to out of bars



WALL B Lt. ELEVATION

Note: Lt. wall details shown right walls similar mirrored about Greenwich road.

drawn by : ras
 plotted by : RAS 9-27-2005
 I:/2004/04219/final/04219-000_C-RetWall/K961EPIV.B.dgn

No.	Revision	By	Date
RETAINING WALL GREENWICH ROAD JAMES L. ARMOUR, P.E.—CITY ENGINEER CITY OF WICHITA PROJECT NO. 472-84004 STA. 83+54.00 Professional Engineering Consultants, P.A. 303 S. TOPEKA • WICHITA, KANSAS 67202 316-262-2691 • FAX 316-262-3003			
Designed by	RAS	Job No.	04219
Drawn by	DRP	Date	AUGUST 2005