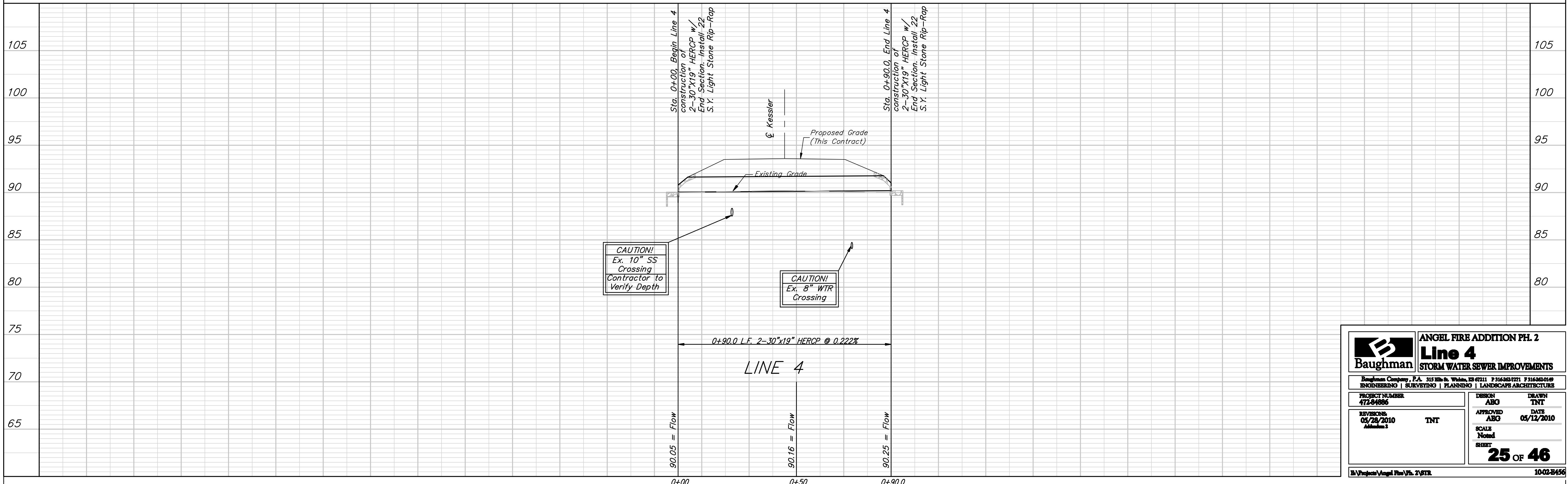
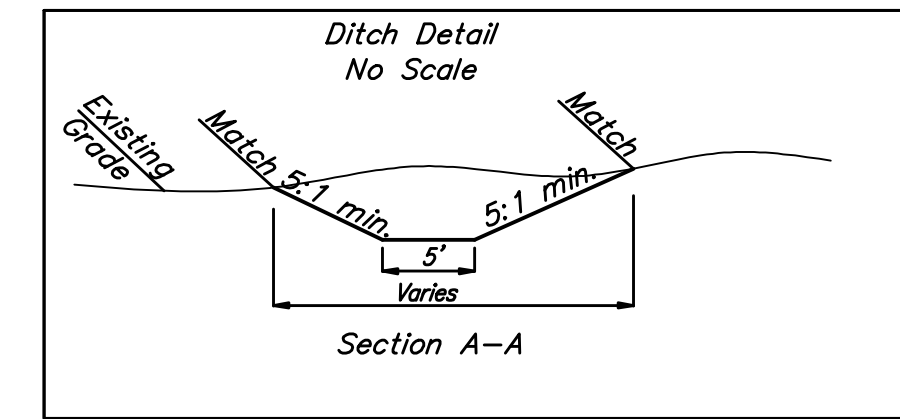
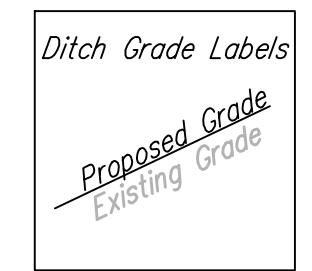
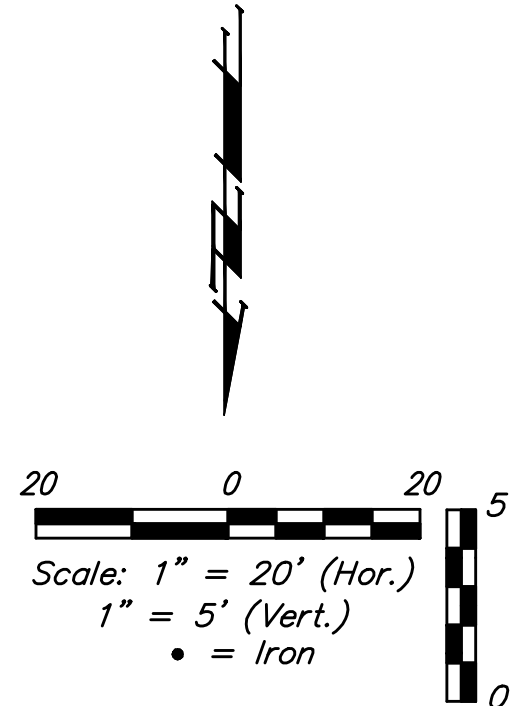
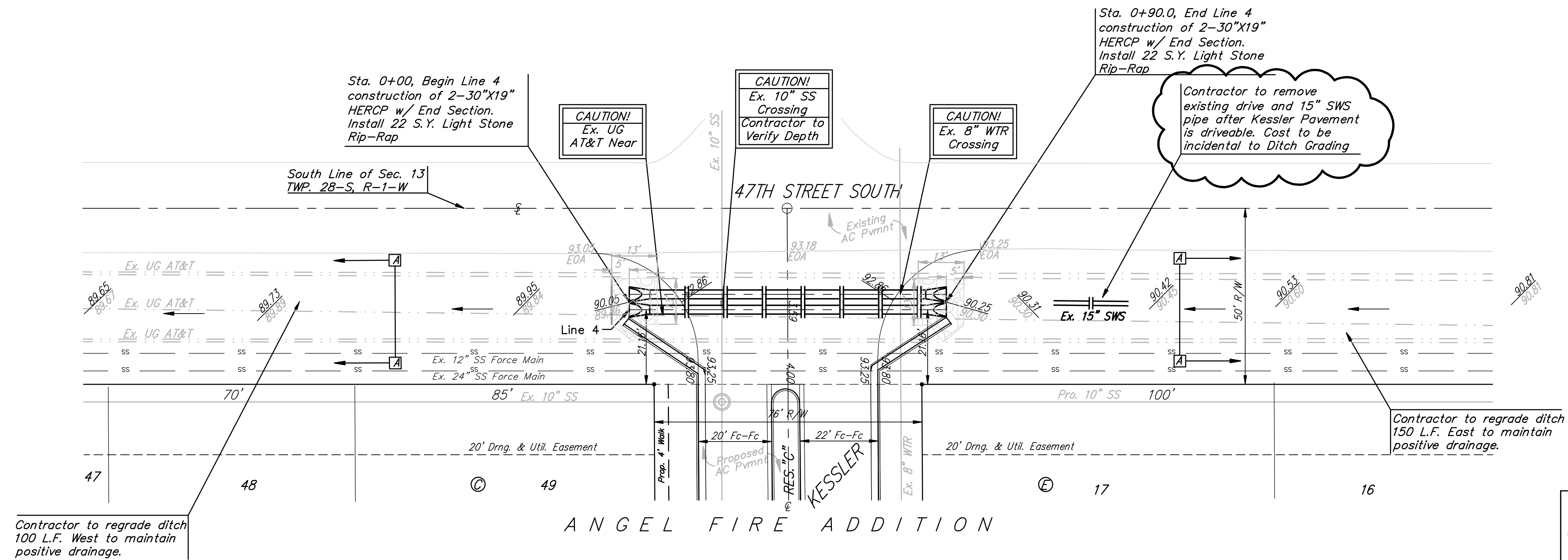


**BENCHMARKS:**  
 C.O.W. Disc SE Corner West St. &  
 47th S.  
 Elev. = 92.29 (City Datum)

RR Spike in N. face of power pole,  
 SE Corner 47th So. & Kessler  
 Elev. = 91.74 (City Datum)

"□" Cut in Top of Curb Adjacent  
 to the NW Corner Lot 27, Block C.  
 Elev. = 93.57 (City Datum)



<b>Baughman</b>		<b>ANGEL FIRE ADDITION PH. 2</b>	
<b>Line 4</b>		<b>STORM WATER SEWER IMPROVEMENTS</b>	
Baughman Company, P.A. 315 Mills St. Wichita, KS 67211 P 316-262-7271 F 316-262-0149 ENGINEERING   SURVEYING   PLANNING   LANDSCAPE ARCHITECTURE			
PROJECT NUMBER 472-04886	DESIGN ASB	DRAWN TNT	
REVISIONS: 05/28/2010 Addition 2	TNT	APPROVED ASB	DATE 05/12/2010
SCALE Noted		SHEET <b>25 OF 46</b>	
H:\Projects\Angel Fire Ph. 2\WTR			10-02-24-56